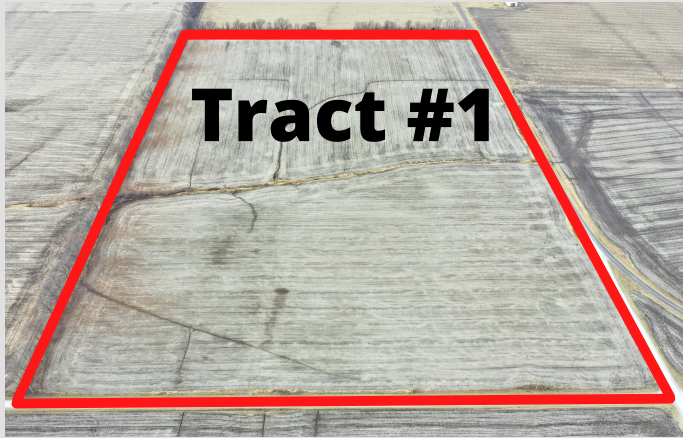


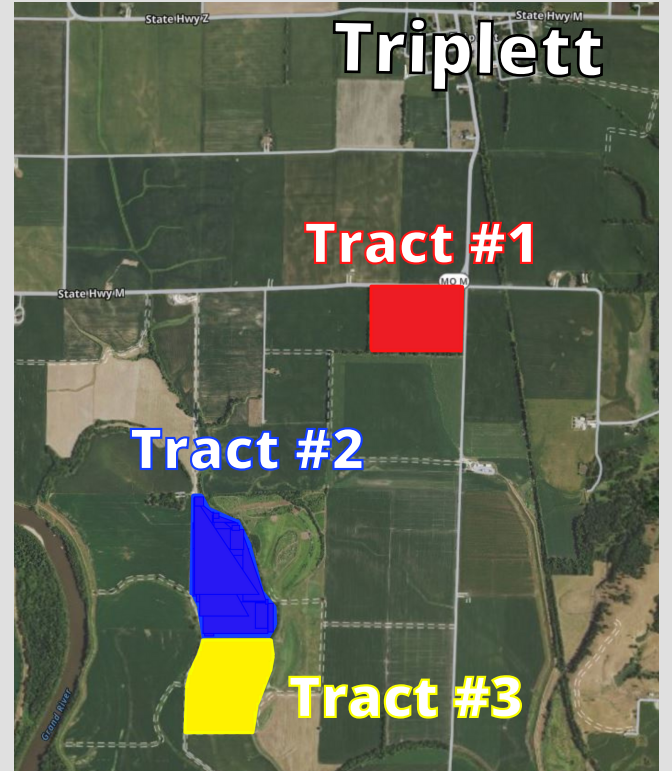
Bondy Family LAND AUCTION

Online-Only | Feb. 17th - 22nd

187 Ac +/- Offered in 3 Tracts South of Triplet



Tract #1



Tract #1- 54 Acres m/l, nearly 100% tillable bench bottom farm. This property boasts some of the highest rated soils in the County and is located outside of the flood plain. Made up of a combination of Shannondale, Triplet, Colo, & Tina silt loams, this property has very few limitations and has been well maintained. Access is from Hwy M on the North, and Triplet Ave on the East, allowing for good access and an easy management.



Tract #2



Tract #2 - 74.31 Surveyed Acres with approximately 68.5 open acres, or 93% tillable. A high producing bottom farm made up of a combination of Carlow silty clay and Tice silty clay loam. A very productive and easily managed property with good access from Grand River Rd along the West side of the property. This tract could have significant potential for waterfowl development as well.



Tract #3



Tract #3 - 59.09 Surveyed Acres with approximately 55.28 open acres, or 93% tillable. Bordering Tract #2 to the South, this is an equally high producing tract with Carlow and Tice silty clay loam soils. Bordered by Grand River Rd along the West and a private lane along the South. This is a well maintained and very productive farm.

For more information call **660-288-3022**

Visit www.EnyeartAuctionRealty.com to Register & Bid!

Bondy Family, Sellers



Daniel: 660-288-3022 * Clayton: 660-651-3396 * Loren: 660-651-9889