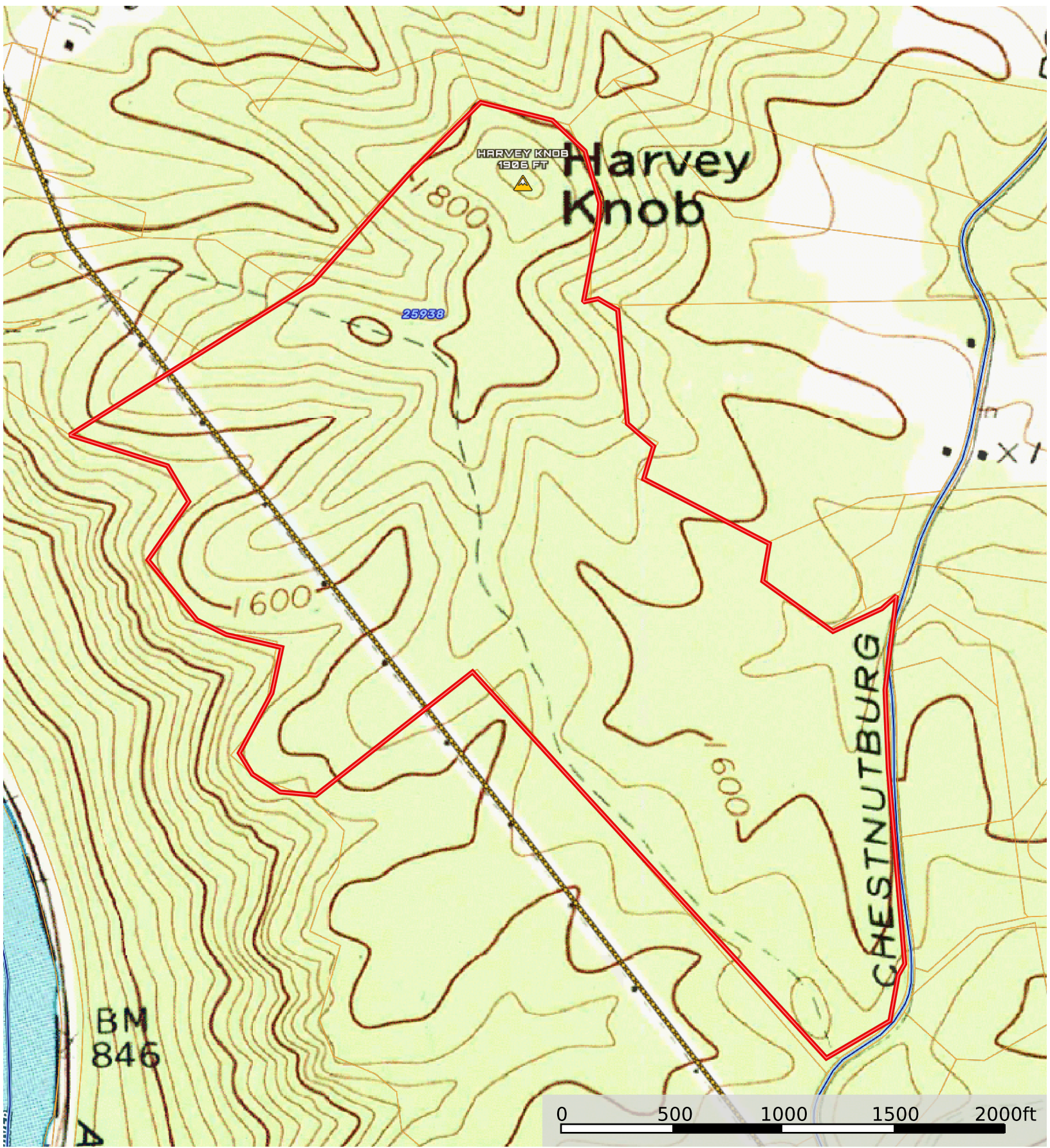


164 Acres on the New River Gorge
Fayette County, West Virginia, 164 AC +/-



Boundary

Stream, Intermittent

River/Creek

Water Body

NOT AVAILABLE

Voltage 0 - 99 KV

Voltage 100 - 161 KV

Voltage 220 - 287 KV

Voltage 345 KV

Voltage 500 KV