

# FOR SALE

## 30.717 Acres

### Pasture, Hunting & Recreational Land

Waco, MSA

## \$231,290

For slideshow and investment offering go to: [www.texasfarmandranchrealty.com](http://www.texasfarmandranchrealty.com)



—“Stewards of Land”—  
A DBA of Dube's Commercial, Inc. TREC# 484723

Bob Dube (Broker)

512-423-6670 (mobile) 254-803-5263 (LAND)

[bob@texasfarmandranchrealty.com](mailto:bob@texasfarmandranchrealty.com)

[www.texasfarmandranchrealty.com](http://www.texasfarmandranchrealty.com)

**FOR  
SALE**

## **30.717 Acres – Pasture, Hunting & Recreational Land Waco, MSA**

### **Property Highlights**

**Location** – From the intersection of I-35 and Hwy 6 in Waco, Texas go 29 miles south on Hwy 6 towards Marlin. Take the exit for TX 7 and turn left onto TX 7. Continue for 12 Miles and turn right onto FM 2745 and go for 1.8 miles. Turn right onto FM 413 and go 0.8 miles. Turn left onto CR 264 and go 0.6 miles. The property will be on the right. Located approximately 1 hour 45 minutes from Fort Worth, Texas, 1 hour 30 minutes from Austin and 2 hours from Houston.

**Acres** – 30.717 acres per survey dated 2/14/23 prepared by Toby Tibbit.

**Features** – The property has road frontage on CR 264. There are various dense trees throughout the property making deer hunting a great attraction. There are ample areas of open pasture for cattle or goats. There is a wet weather creek at the back of the property.

**Water** – Tri-County Water services the area and there is no meter currently on the property. See map of nearest water well to the property. An aquifer map is located in this brochure to determine which aquifer a well will withdraw water from.

**Electricity** – Entergy services the area and there is no meter currently on the property.

**Soil** – There are various soil types on the property. Please refer to the USDA Soil Map located in the brochure. Flood information is available on the report if applicable.

**Easements** – An abstract of title will need to be performed to determine any easements that may exist. A survey is included in this brochure which shows no recorded easements exist.

**Minerals** – Seller conveys all owned minerals.

**Topography** – The land is flat.

**Current Use** – Privately owned and used for recreation and hunting.

**Offered At** - \$231,290 - \$7,530 an acre

Texas Farm and Ranch Realty dba Dube's Commercial, Inc., does not make any representations or warranties expressed or implied as to the accuracy of this information. All sources are deemed reliable.



Bob Dube (Broker)

512-423-6670 (mobile) 254-803-5263 (LAND)

bob@texasfarmandranchrealty.com

www.texasfarmandranchrealty.com



**FOR  
SALE**

# **30.717 Acres – Pasture, Hunting & Recreational Land Waco, MSA**

## **Property Pictures**



— "Stewards of Land" —  
A DBA of Dube's Commercial, Inc. TREC# 484723

**Bob Dube (Broker)**

**512-423-6670 (mobile) 254-803-5263 (LAND)**

**[bob@texasfarmandranchrealty.com](mailto:bob@texasfarmandranchrealty.com)**

**[www.texasfarmandranchrealty.com](http://www.texasfarmandranchrealty.com)**



**FOR  
SALE**

**30.717 Acres – Pasture, Hunting & Recreational Land  
Waco, MSA**

## **Property Aerial View**



**Bob Dube (Broker)**

**512-423-6670 (mobile) 254-803-5263 (LAND)**

**[bob@texasfarmandranchrealty.com](mailto:bob@texasfarmandranchrealty.com)**

**[www.texasfarmandranchrealty.com](http://www.texasfarmandranchrealty.com)**



**FOR  
SALE**

# **30.717 Acres – Pasture, Hunting & Recreational Land Waco, MSA**



—“Stewards of Land”—  
A DBA of Dube's Commercial, Inc. TREC# 484723

**Bob Dube (Broker)**

**512-423-6670 (mobile) 254-803-5263 (LAND)**

**bob@texasfarmandranchrealty.com**

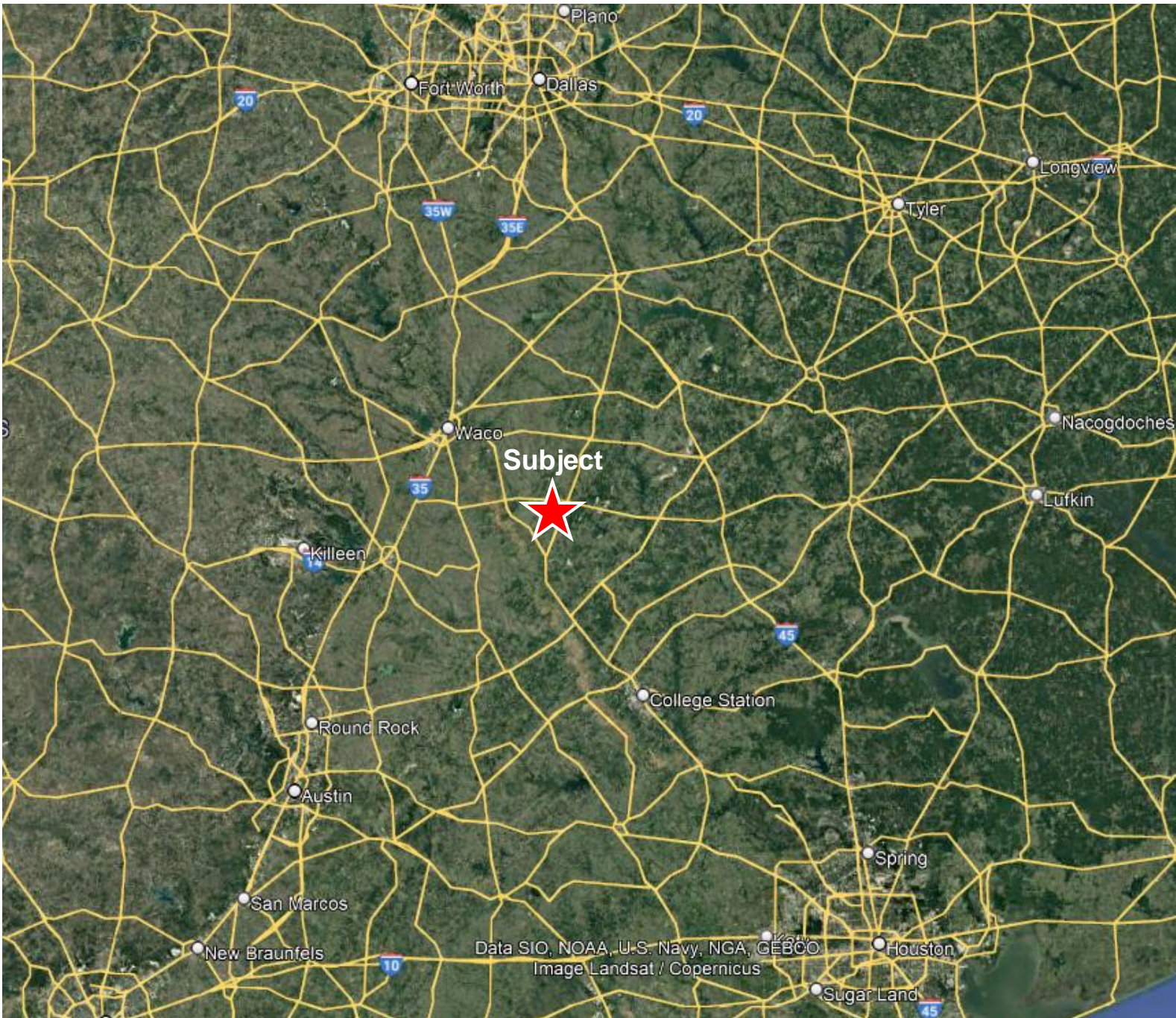
**www.texasfarmandranchrealty.com**



**FOR  
SALE**

# **30.717 Acres – Pasture, Hunting & Recreational Land Waco, MSA**

## **Property Location Relative to DFW, Austin and Houston**



A DBA of Dube's Commercial, Inc. TREC# 484723

**Bob Dube (Broker)**

**512-423-6670 (mobile) 254-803-5263 (LAND)**

**[bob@texasfarmandranchrealty.com](mailto:bob@texasfarmandranchrealty.com)**

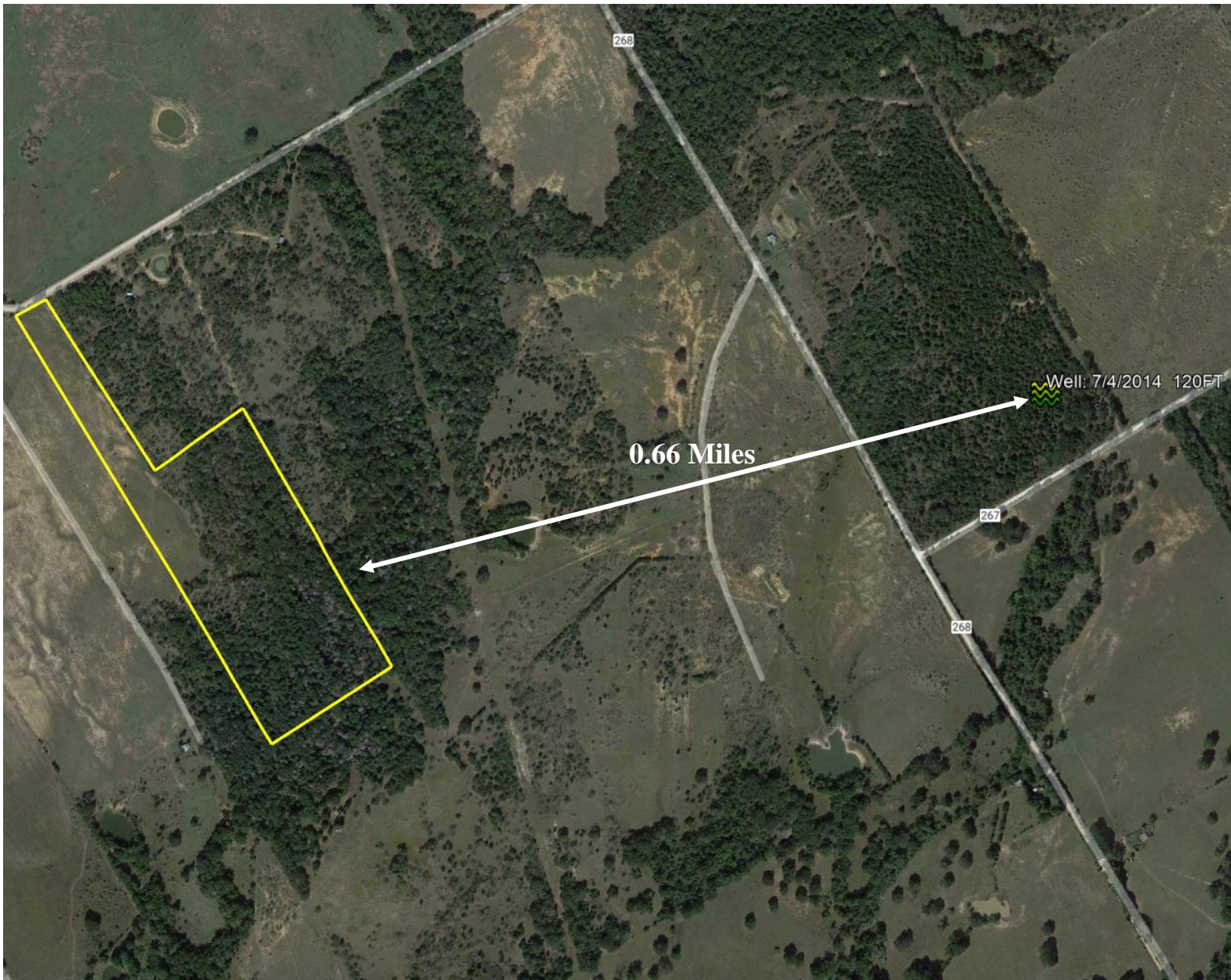
**[www.texasfarmandranchrealty.com](http://www.texasfarmandranchrealty.com)**



**FOR  
SALE**

**30.717 Acres – Pasture, Hunting & Recreational Land  
Waco, MSA**

## **Aerial of Nearest Permitted Water Well**



**Bob Dube (Broker)**

**512-423-6670 (mobile) 254-803-5263 (LAND)**

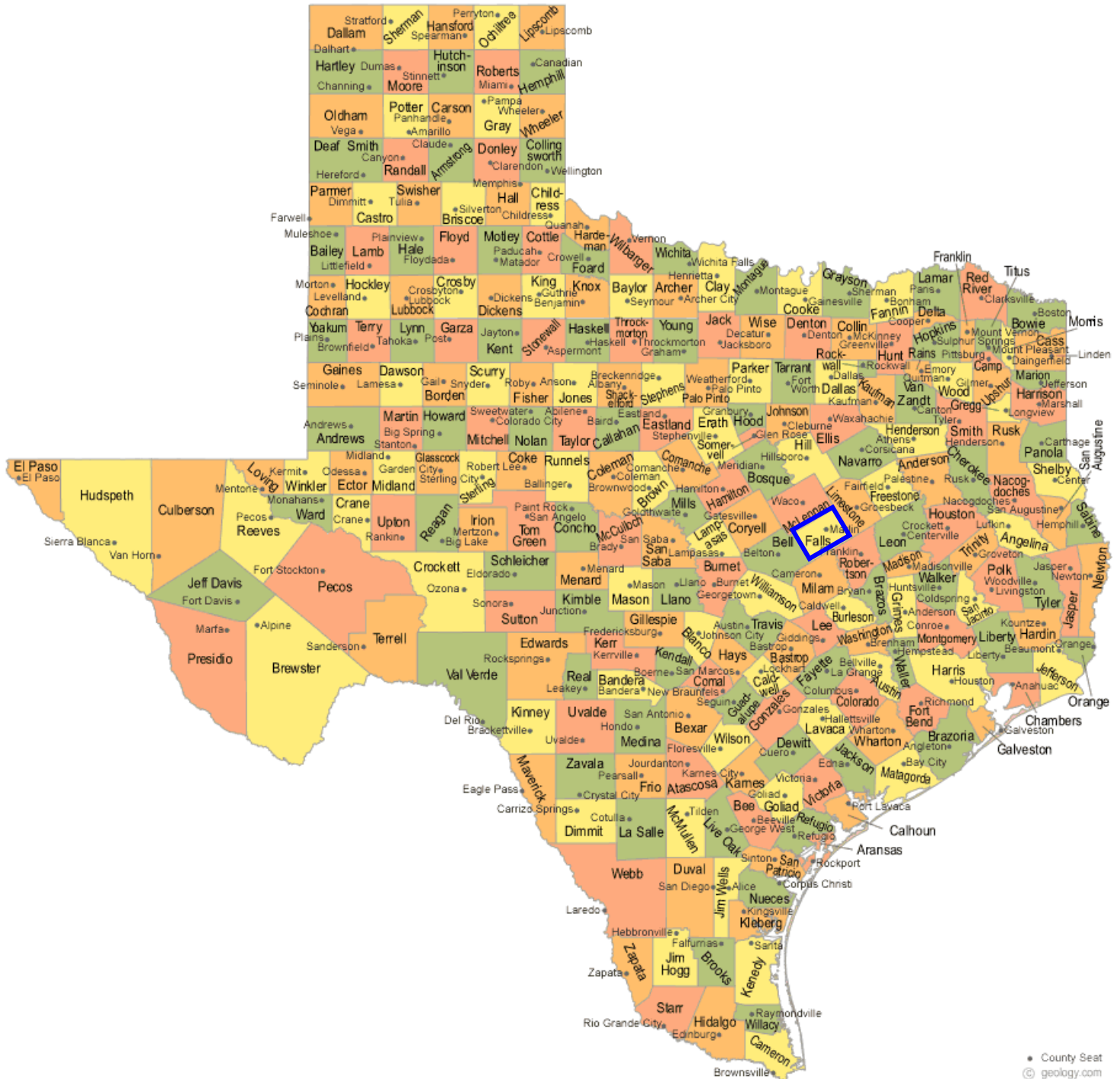
**bob@texasfarmandranchrealty.com**

**www.texasfarmandranchrealty.com**

**FOR  
SALE**

# 30.717 Acres – Pasture, Hunting & Recreational Land Waco, MSA

## Location of Falls County



**TEXAS**  
FARM & RANCH REALTY

— "Stewards of Land" —  
A DBA of Dube's Commercial, Inc. TREC# 484723

Bob Dube (Broker)

512-423-6670 (mobile) 254-803-5263 (LAND)

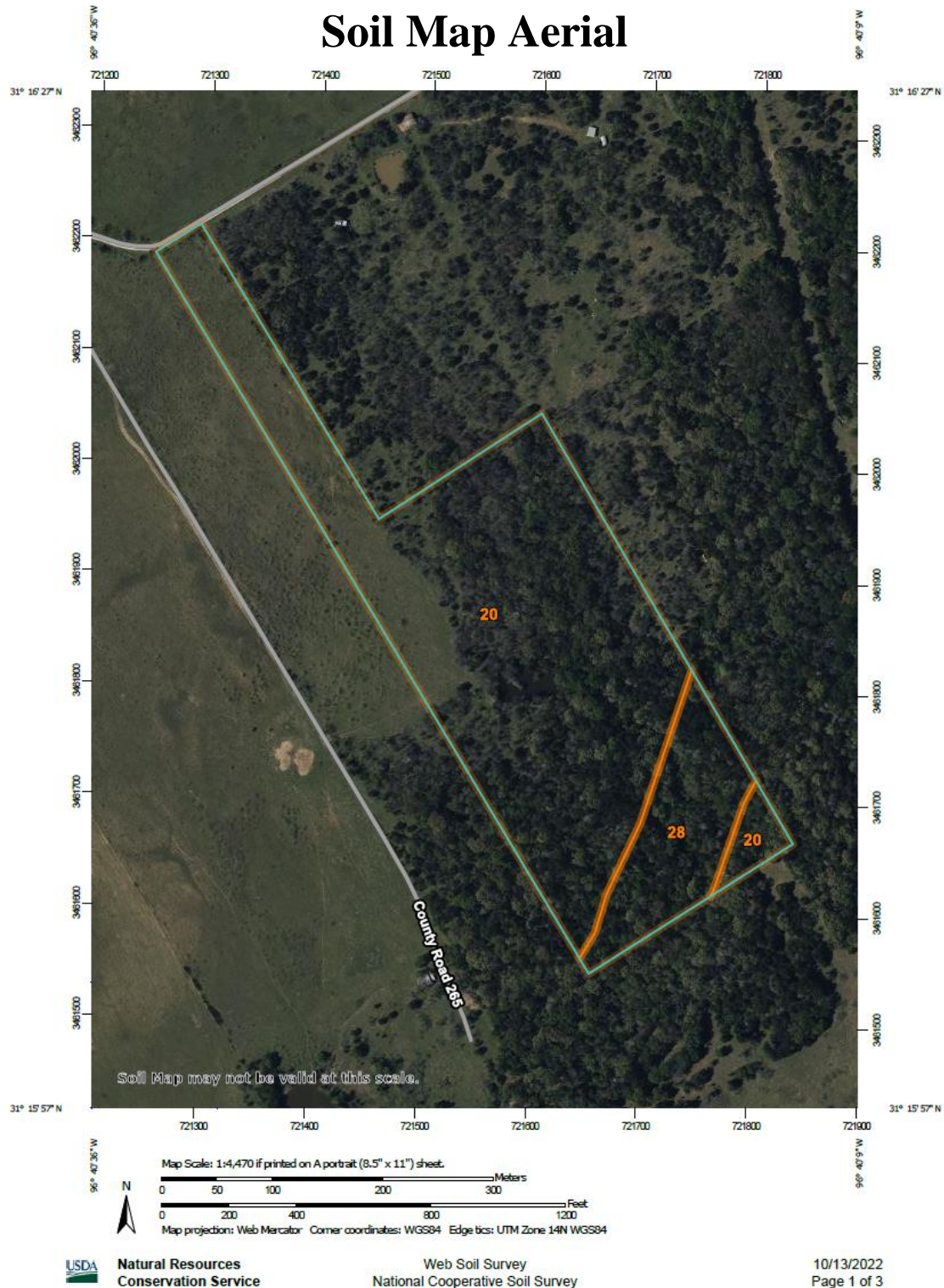
bob@texasfarmandranchrealty.com

www.texasfarmandranchrealty.com



**FOR  
SALE**

# **30.717 Acres – Pasture, Hunting & Recreational Land Waco, MSA**



— "Stewards of Land" —  
A DBA of Dube's Commercial, Inc. TREC# 484723

**Bob Dube (Broker)**

**512-423-6670 (mobile) 254-803-5263 (LAND)**

**bob@texasfarmandranchrealty.com**

**www.texasfarmandranchrealty.com**



**FOR  
SALE**

# **30.717 Acres – Pasture, Hunting & Recreational Land Waco, MSA**

## **Soil Map Legend**

<b>Map Unit Symbol</b>	<b>Map Unit Name</b>	<b>Acres in AOI</b>	<b>Percent of AOI</b>
20	Crockett fine sandy loam, 1 to 3 percent slopes	24.0	84.6%
28	Gowen clay loam, frequently flooded	4.3	15.4%
<b>Totals for Area of Interest</b>		<b>28.3</b>	<b>100.0%</b>



A DBA of Dube's Commercial, Inc. TREC# 484723

**Bob Dube (Broker)**

**512-423-6670 (mobile) 254-803-5263 (LAND)**

**bob@texasfarmandranchrealty.com**

**www.texasfarmandranchrealty.com**



**FOR  
SALE**

## **30.717 Acres – Pasture, Hunting & Recreational Land Waco, MSA**

### **Soil Type – 20**

**20—Crockett fine sandy loam, 1 to 3 percent slopes.** This deep, moderately well drained, gently sloping soil is on uplands. Slopes are convex. Areas range from 35 to 400 acres in size.

This soil has a surface layer of brown, medium acid fine sandy loam about 9 inches thick. Between depths of 9 and 17 inches is mottled brownish yellow and red, medium acid clay that has grayish brown mottles. Below this layer, to a depth of 29 inches, is mottled yellow and grayish brown, medium acid clay, that has reddish yellow mottles. Between depths of 29 and 42 inches is brown, slightly acid clay that has brownish yellow mottles; and between depths of 42 and 53 inches is brownish yellow, neutral clay that has light brownish gray and reddish yellow mottles. Between depths of 53 and 73 inches is yellow, moderately alkaline sandy clay loam that has light brownish gray, white, and yellowish brown mottles. The underlying layer, to a depth of 80 inches, is mottled yellow light gray, and brownish yellow, moderately alkaline sandy clay loam.

Hard surface crusts and dense plowpans that form in cultivated areas make this soil difficult to work. Permeability is very slow, and available water capacity is high. The root zone is deep, but root penetration is slow and difficult in the underlying layers. Runoff is medium. The hazard of water erosion is moderate.

Included with this soil in mapping are a few intermingled areas of Normangee and Wilson soils and eroded Crockett soils. The included soils make up about 10 to 20 percent of this map unit.

This soil has medium potential for production of crops, but it is limited by low natural fertility and rapid loss of soil moisture during the summer. The major crops are small grain for winter grazing and grain sorghum. The major objectives in management are controlling erosion, maintaining fertility, and improving tilth. Terracing and growing high-residue crops and deep-rooted legumes help control erosion and maintain tilth.

This soil has high potential for pasture. It is well suited to coastal bermudagrass, common bermudagrass, and weeping lovegrass. Proper pasture management includes fertilization, weed control, and controlled grazing.

This soil has high potential for range. The climax plant community is a mixture of tall and mid grasses and an overstory of a few live oak, elm, and hackberry trees along streams and in occasional motts.

This soil has low potential for most urban uses. Its most restrictive limitations are shrinking and swelling with changes in moisture, corrosivity to uncoated steel, and slow percolation. The potential for recreation is medium. The very slow permeability is the most restrictive limitation for this use. Potential for openland and range-land wildlife habitat is medium. Capability subclass IIIe; Claypan Prairie range site.



**Bob Dube (Broker)**

**512-423-6670 (mobile) 254-803-5263 (LAND)**

**bob@texasfarmandranchrealty.com    www.texasfarmandranchrealty.com**

—Stewards of Land—  
A DBA of Dube's Commercial, Inc. TREC# 484723



**FOR  
SALE**

## **30.717 Acres – Pasture, Hunting & Recreational Land Waco, MSA**

### **Soil Type – 28**

**28—Gowen clay loam, frequently flooded.** This deep, well drained, nearly level soil is on flood plains along major streams. It is flooded two or three times each year; flooding lasts from several hours to several days. Areas have plane slopes of 0 to 1 percent. These areas are on flood plains in long, narrow bands and are dissected by old creek beds and by meandering channels. Individual areas range from 20 to about 200 acres in size.

The soil has a surface layer of very dark grayish brown, neutral clay loam about 23 inches thick. Below the surface layer, to a depth of 36 inches, is brown, neutral clay loam. The underlying layer, to a depth of 80 inches, is dark grayish brown, neutral clay loam stratified with fine sandy loam and clay in the lower part.

Permeability is moderate, and the available water capacity is high. The root zone is deep and easily penetrated by roots. Runoff is slow. The hazard of water erosion is slight.

Included with this soil in mapping are a few intermingled areas of Bunyan and Trinity soils and areas of Gowen soils that are not flooded each year. The included soils make up about 15 percent of this map unit.

This soil has low potential for production of crops, recreation, and urban uses. The most restrictive limitation is flooding, which can only be overcome by major flood control.

This soil is well suited to pasture and has high potential for this use. It is well suited to improved bermudagrass, johnsongrass, common bermudagrass, and kleingrass. Proper management includes fertilization, controlled grazing, and weed control.

This soil has high potential for range. The climax plant community is a mixture of tall and mid grasses and an overstory of scattered oak, pecan, hackberry, elm, and cottonwood trees.

This soil has low potential for openland wildlife habitat and medium potential for rangeland wildlife habitat. Capability subclass Vw; Loamy Bottomland range site.



—“Stewards of Land”  
A DBA of Dube’s Commercial, Inc. TREC# 484723

**Bob Dube (Broker)**

**512-423-6670 (mobile) 254-803-5263 (LAND)**

**bob@texasfarmandranchrealty.com**

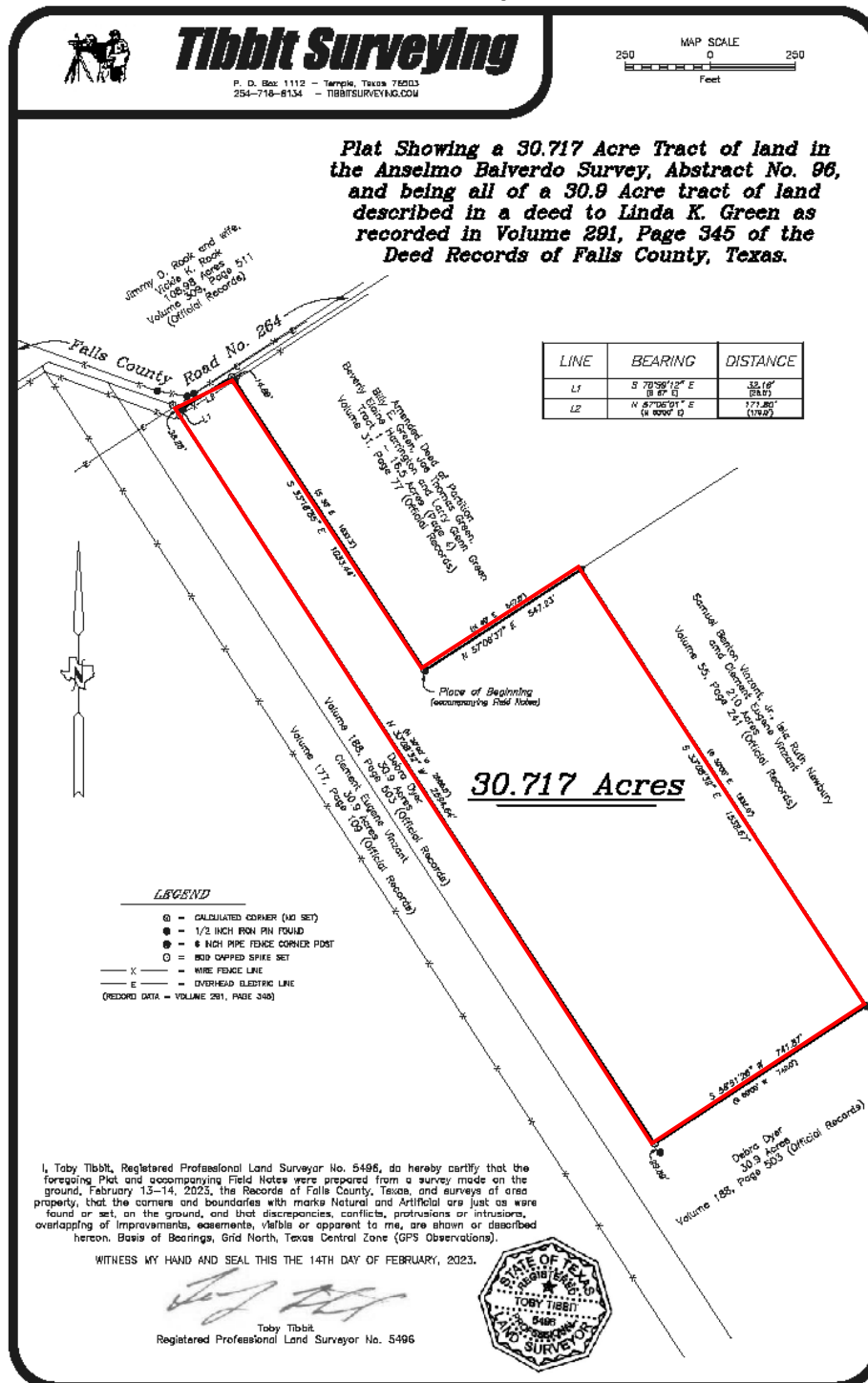
**www.texasfarmandranchrealty.com**



FOR  
SALE

# 30.717 Acres – Pasture, Hunting & Recreational Land Waco, MSA

## Survey



**TEXAS**  
FARM & RANCH REALTY

Bob Dube (Broker)

512-423-6670 (mobile) 254-803-5263 (LAND)

bob@texasfarmandranchrealty.com

www.texasfarmandranchrealty.com

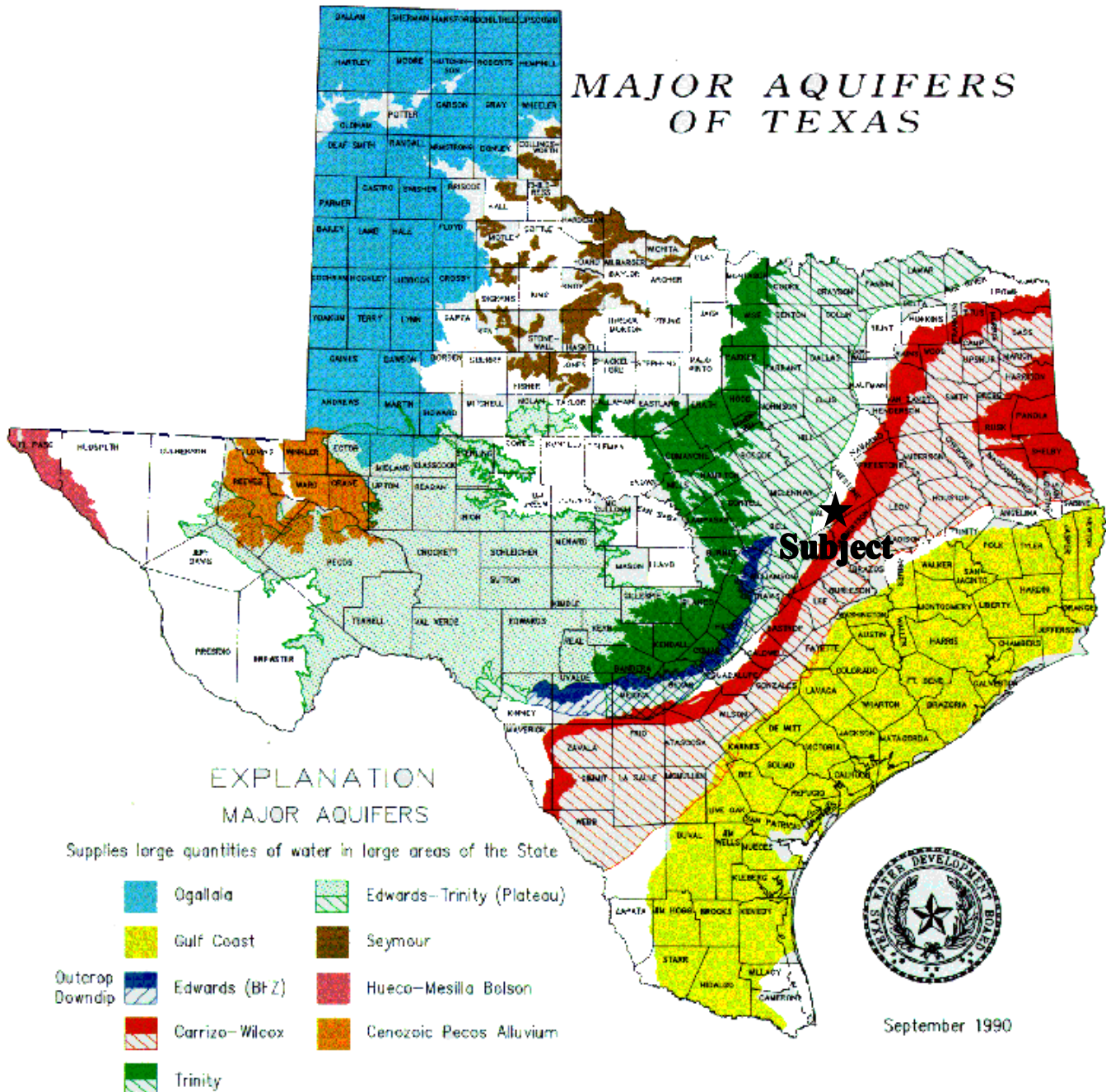
— "Stewards of Land" —  
A DBA of Dube's Commercial, Inc. TREC# 484723



FOR  
SALE

# 30.717 Acres – Pasture, Hunting & Recreational Land Waco, MSA

## Property Location to Major Aquifers of Texas



**TEXAS**  
FARM & RANCH REALTY

—“Stewards of Land”—  
A DBA of Dube's Commercial, Inc. TREC# 484723

Bob Dube (Broker)

512-423-6670 (mobile) 254-803-5263 (LAND)

bob@texasfarmandranchrealty.com

www.texasfarmandranchrealty.com



**FOR  
SALE**

**30.717 Acres – Pasture, Hunting & Recreational Land  
Waco, MSA**

## **Topo Map**



**Bob Dube (Broker)**

**512-423-6670 (mobile) 254-803-5263 (LAND)**

**[bob@texasfarmandranchrealty.com](mailto:bob@texasfarmandranchrealty.com)**

**[www.texasfarmandranchrealty.com](http://www.texasfarmandranchrealty.com)**

A DBA of Dube's Commercial, Inc. TREC# 484723



**FOR  
SALE**

# **30.717 Acres – Pasture, Hunting & Recreational Land Waco, MSA**

## **CONFIDENTIALITY & DISCLAIMER**

The information contained in the following Investment Brochure is proprietary and strictly confidential. It is intended to be reviewed only by the party receiving it from Dube's Commercial Inc. and should not be made available to any other person or entity without the written consent of Dube's Commercial Inc. This Investment Brochure has been prepared to provide summary information to prospective investors, and to establish only a preliminary level of interest in the subject property. The information contained herein is not a substitute for a thorough due diligence investigation. Dube's Commercial Inc. makes no warranty or representation, with respect to the income or expenses for the subject property, the future projected financial performance of the property, the size and square footage of the property and improvements, the presence or absence of contaminating substances, PCB's or asbestos, the compliance with State and Federal regulations, the physical condition of the improvements thereon, or the financial condition or business prospects of any tenant, or any tenant's plans or intentions to continue its occupancy of the subject property. The information contained in this Investment Brochure has been obtained from sources we believe to be reliable; however, Dube's Commercial Inc. makes no warranty or representation whatsoever regarding the accuracy or completeness of the information provided.

**THE TEXAS REAL ESTATE COMMISSION (TREC) REGULATES  
REAL ESTATE BROKERS AND SALES AGENTS, REAL ESTATE INSPECTORS,  
HOME WARRANTY COMPANIES, EASEMENT AND RIGHT-OF-WAY AGENTS  
AND TIMESHARE INTEREST PROVIDERS**

**YOU CAN FIND MORE INFORMATION AND  
CHECK THE STATUS OF A LICENSE HOLDER AT  
[WWW.TREC.TEXAS.GOV](http://WWW.TREC.TEXAS.GOV)**

**YOU CAN SEND A COMPLAINT AGAINST A LICENSE HOLDER TO TREC  
A COMPLAINT FORM IS AVAILABLE ON THE TREC WEBSITE**

**TREC ADMINISTERS TWO RECOVERY FUNDS WHICH MAY BE USED TO  
SATISFY A CIVIL COURT JUDGMENT AGAINST A BROKER, SALES AGENT,  
REAL ESTATE INSPECTOR, OR EASEMENT OR RIGHT-OF-WAY AGENT,  
IF CERTAIN REQUIREMENTS ARE MET**

**IF YOU HAVE QUESTIONS OR ISSUES ABOUT THE ACTIVITIES OF  
A LICENSE HOLDER, THE COMPLAINT PROCESS OR THE  
RECOVERY FUNDS, PLEASE VISIT THE WEBSITE OR CONTACT TREC AT**



**TEXAS REAL ESTATE COMMISSION  
P.O. BOX 12188  
AUSTIN, TEXAS 78711-2188  
(512) 936-3000**



**Bob Dube (Broker)**

**512-423-6670 (mobile) 254-803-5263 (LAND)**

**[bob@texasfarmandranchrealty.com](mailto:bob@texasfarmandranchrealty.com)**

**[www.texasfarmandranchrealty.com](http://www.texasfarmandranchrealty.com)**

~"Stewards of Land"  
A DBA of Dube's Commercial, Inc. TREC# 484723



FOR  
SALE

# 30.717 Acres – Pasture, Hunting & Recreational Land Waco, MSA

11/2/2015



## Information About Brokerage Services

*Texas law requires all real estate licensees to give the following information about brokerage services to prospective buyers, tenants, sellers and landlords.*

### TYPES OF REAL ESTATE LICENSE HOLDERS:

- **A BROKER** is responsible for all brokerage activities, including acts performed by sales agents sponsored by the broker.
- **A SALES AGENT** must be sponsored by a broker and works with clients on behalf of the broker.

### A BROKER'S MINIMUM DUTIES REQUIRED BY LAW (A client is the person or party that the broker represents):

- Put the interests of the client above all others, including the broker's own interests;
- Inform the client of any material information about the property or transaction received by the broker;
- Answer the client's questions and present any offer to or counter-offer from the client; and
- Treat all parties to a real estate transaction honestly and fairly.

### A LICENSE HOLDER CAN REPRESENT A PARTY IN A REAL ESTATE TRANSACTION:

**AS AGENT FOR OWNER (SELLER/LANDLORD):** The broker becomes the property owner's agent through an agreement with the owner, usually in a written listing to sell or property management agreement. An owner's agent must perform the broker's minimum duties above and must inform the owner of any material information about the property or transaction known by the agent, including information disclosed to the agent or subagent by the buyer or buyer's agent.

**AS AGENT FOR BUYER/TENANT:** The broker becomes the buyer/tenant's agent by agreeing to represent the buyer, usually through a written representation agreement. A buyer's agent must perform the broker's minimum duties above and must inform the buyer of any material information about the property or transaction known by the agent, including information disclosed to the agent by the seller or seller's agent.

**AS AGENT FOR BOTH - INTERMEDIARY:** To act as an intermediary between the parties the broker must first obtain the written agreement of each party to the transaction. The written agreement must state who will pay the broker and, in conspicuous bold or underlined print, set forth the broker's obligations as an intermediary. A broker who acts as an intermediary:

- Must treat all parties to the transaction impartially and fairly;
- May, with the parties' written consent, appoint a different license holder associated with the broker to each party (owner and buyer) to communicate with, provide opinions and advice to, and carry out the instructions of each party to the transaction;
- Must not, unless specifically authorized in writing to do so by the party, disclose:
  - that the owner will accept a price less than the written asking price;
  - that the buyer/tenant will pay a price greater than the price submitted in a written offer; and
  - any coincidental information or any other information that a party specifically instructs the broker in writing not to disclose, unless required to do so by law.

**AS SUBAGENT:** A license holder acts as a subagent when aiding a buyer in a transaction without an agreement to represent the buyer. A subagent can assist the buyer but does not represent the buyer and must place the interests of the owner first.

### TO AVOID DISPUTES, ALL AGREEMENTS BETWEEN YOU AND A BROKER SHOULD BE IN WRITING AND CLEARLY ESTABLISH:

- The broker's duties and responsibilities to you, and your obligations under the representation agreement,
- Who will pay the broker for services provided to you, when payment will be made and how the payment will be calculated.

**LICENSE HOLDER CONTACT INFORMATION:** This notice is being provided for information purposes. It does not create an obligation for you to use the broker's services. Please acknowledge receipt of this notice below and retain a copy for your records.

<u>Dube's Commercial Inc.</u>	<u>484723</u>	<u>bob@dubescmercial.com</u>	<u>(254)803-5263</u>
Licensed Broker /Broker Firm Name or	License No.	Email	Phone
Primary Assumed Business Name			
<u>Dube's Commercial, Inc.</u>	<u>484723</u>	<u>bob@dubescmercial.com</u>	<u>(254)803-5263</u>
Designated Broker of Firm	License No.	Email	Phone
<u>Robert T. Dube</u>	<u>365515</u>	<u>bob@texasfarmandranchrealty.com</u>	<u>(254)803-5263</u>
Licensed Supervisor of Sales Agent/ Associate	License No.	Email	Phone
Sales Agent/Associate's Name	License No.	Email	Phone
Buyer/Tenant/Seller/Landlord Initials	Date		

Regulated by the Texas Real Estate Commission

Information available at [www.trec.texas.gov](http://www.trec.texas.gov)  
IABS 1-0 Date



— "Stewards of Land" —  
A DBA of Dube's Commercial, Inc. TREC# 484723

Bob Dube (Broker)

512-423-6670 (mobile) 254-803-5263 (LAND)

bob@texasfarmandranchrealty.com [www.texasfarmandranchrealty.com](http://www.texasfarmandranchrealty.com)