

Source: NRCS Soil Survey

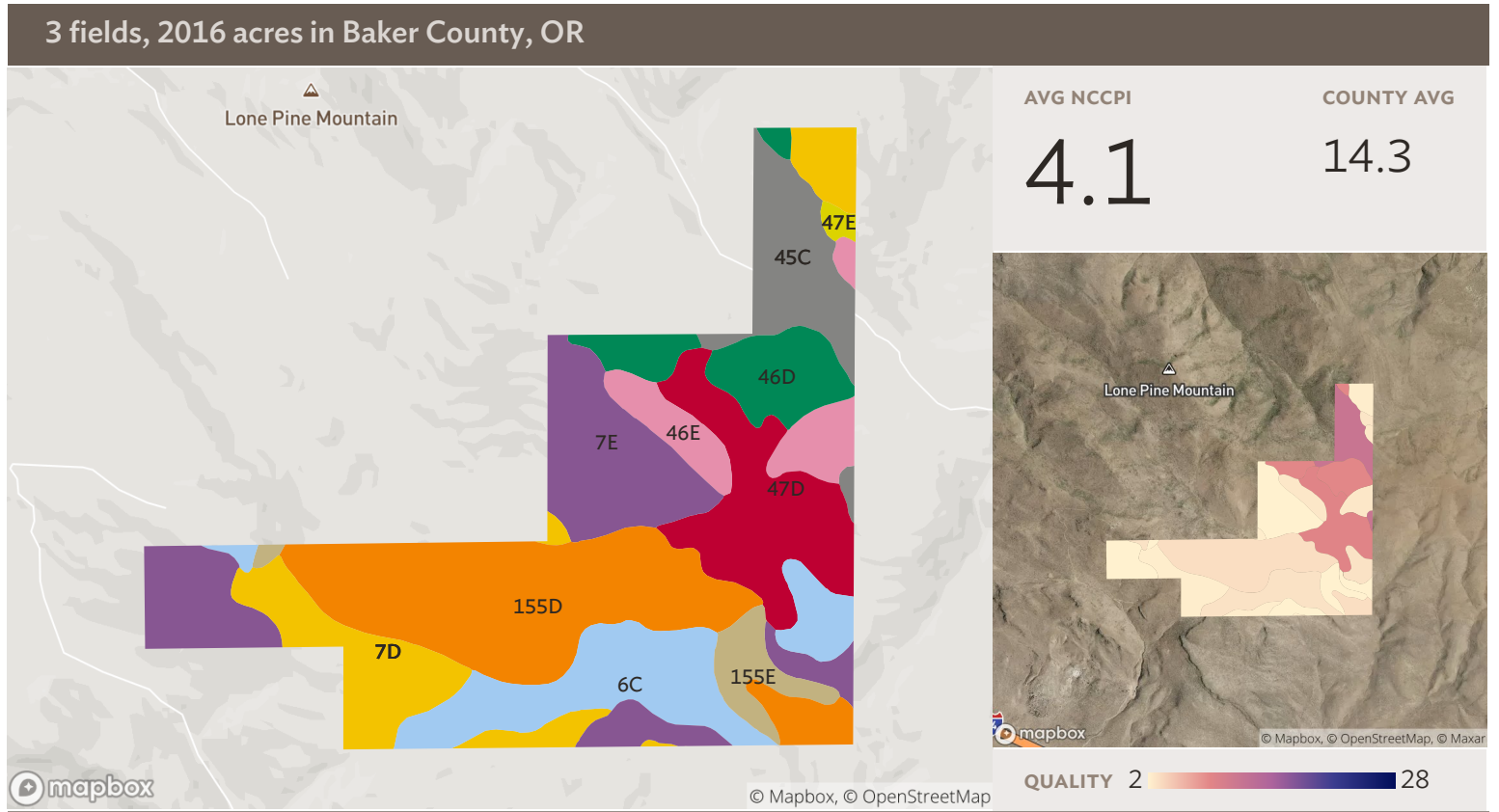
All fields

2016 ac

SOIL CODE	SOIL DESCRIPTION	ACRES	PERCENTAGE OF FIELD	SOIL CLASS	NCCPI
7D	Ateron very stony loam, 12 to 35 percent south slopes	594.66	29.5%	7	2.2
7E	Ateron very stony loam, 35 to 60 percent south slopes	494.72	24.5%	7	0.8
155D	Snell-Ateron complex, 12 to 35 percent north slopes	206.53	10.2%	6	3.1
6C	Ateron very stony loam, 2 to 12 percent slopes	197.32	9.8%	7	2.9
47D	Durkee gravelly silt loam, 12 to 35 percent south slopes	119.96	6.0%	4	8.7
155E	Snell-Ateron complex, 35 to 60 percent north slopes	70.06	3.5%	6	1.0
45C	Durkee gravelly silt loam, 2 to 12 percent slopes	61.59	3.1%	4	11.6
46D	Durkee gravelly silt loam, 12 to 35 percent north slopes	56.17	2.8%	4	8.4
46E	Durkee gravelly silt loam, 35 to 60 percent north slopes	46.25	2.3%	6	2.6

3 fields, 2016 acres in Baker County, OR

■	99C	Lookout very cobbly silt loam, 2 to 12 percent slopes	44.07	2.2%	6	6.3
■	51E	Encina gravelly silt loam, 35 to 50 percent south slopes	41.57	2.1%	6	3.4
■	105C	Marack gravelly silty clay loam, 2 to 12 percent slopes	34.19	1.7%	6	9.3
■	173C	Wahstal very cobbly loam, 2 to 12 percent slopes	22.80	1.1%	7	3.2
■	104D	Marack silt loam, 12 to 35 percent north slopes	17.20	0.9%	6	8.5
■	47E	Durkee gravelly silt loam, 35 to 60 percent south slopes	3.94	0.2%	6	2.7
■	34E	Campcreek-Skullgulch association, 35 to 60 percent slopes	2.66	0.1%	6	1.9
■	106D	Marack very gravelly silty clay loam, 12 to 35 percent south slopes	2.35	0.1%	6	7.0
2,016.05						3.1



Field 1

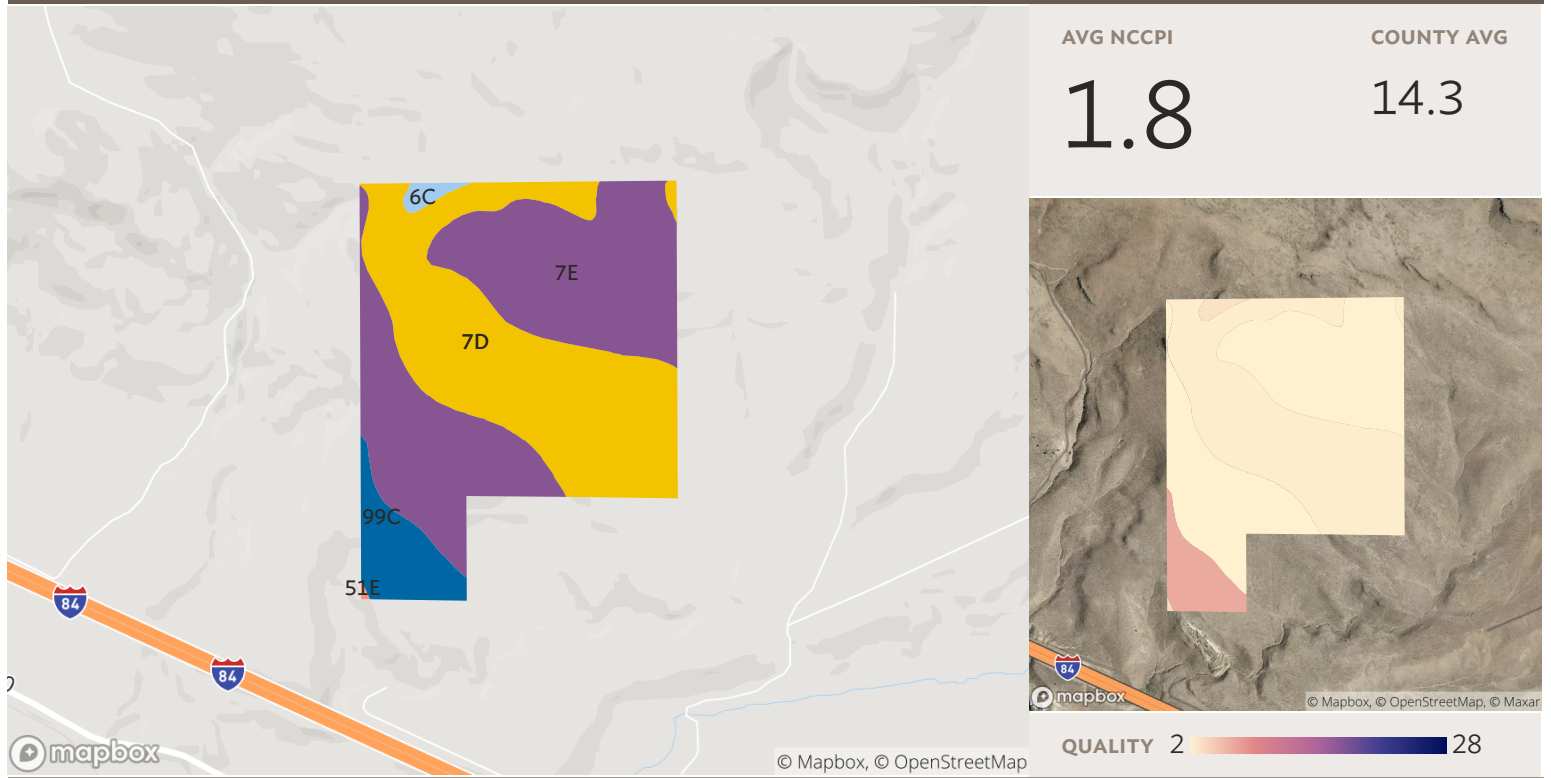
Source: NRCS Soil Survey

811 ac

SOIL CODE	SOIL DESCRIPTION	ACRES	PERCENTAGE OF FIELD	SOIL CLASS	NCCPI
155D	Snell-Ateron complex, 12 to 35 percent north slopes	186.93	23.0%	6	3.1
7E	Ateron very stony loam, 35 to 60 percent south slopes	144.47	17.8%	7	0.8
6C	Ateron very stony loam, 2 to 12 percent slopes	105.80	13.0%	7	2.9
47D	Durkee gravelly silt loam, 12 to 35 percent south slopes	91.61	11.3%	4	8.7
7D	Ateron very stony loam, 12 to 35 percent south slopes	90.28	11.1%	7	2.2
45C	Durkee gravelly silt loam, 2 to 12 percent slopes	61.59	7.6%	4	11.6
46D	Durkee gravelly silt loam, 12 to 35 percent north slopes	56.17	6.9%	4	8.4
46E	Durkee gravelly silt loam, 35 to 60 percent north slopes	44.64	5.5%	6	2.6
155E	Snell-Ateron complex, 35 to 60 percent north slopes	26.02	3.2%	6	1.0

3 fields, 2016 acres in Baker County, OR

<div><div></div></div> 47E	Durkee gravelly silt loam, 35 to 60 percent south slopes	3.94	0.5%	6	2.7
811.46					4.1

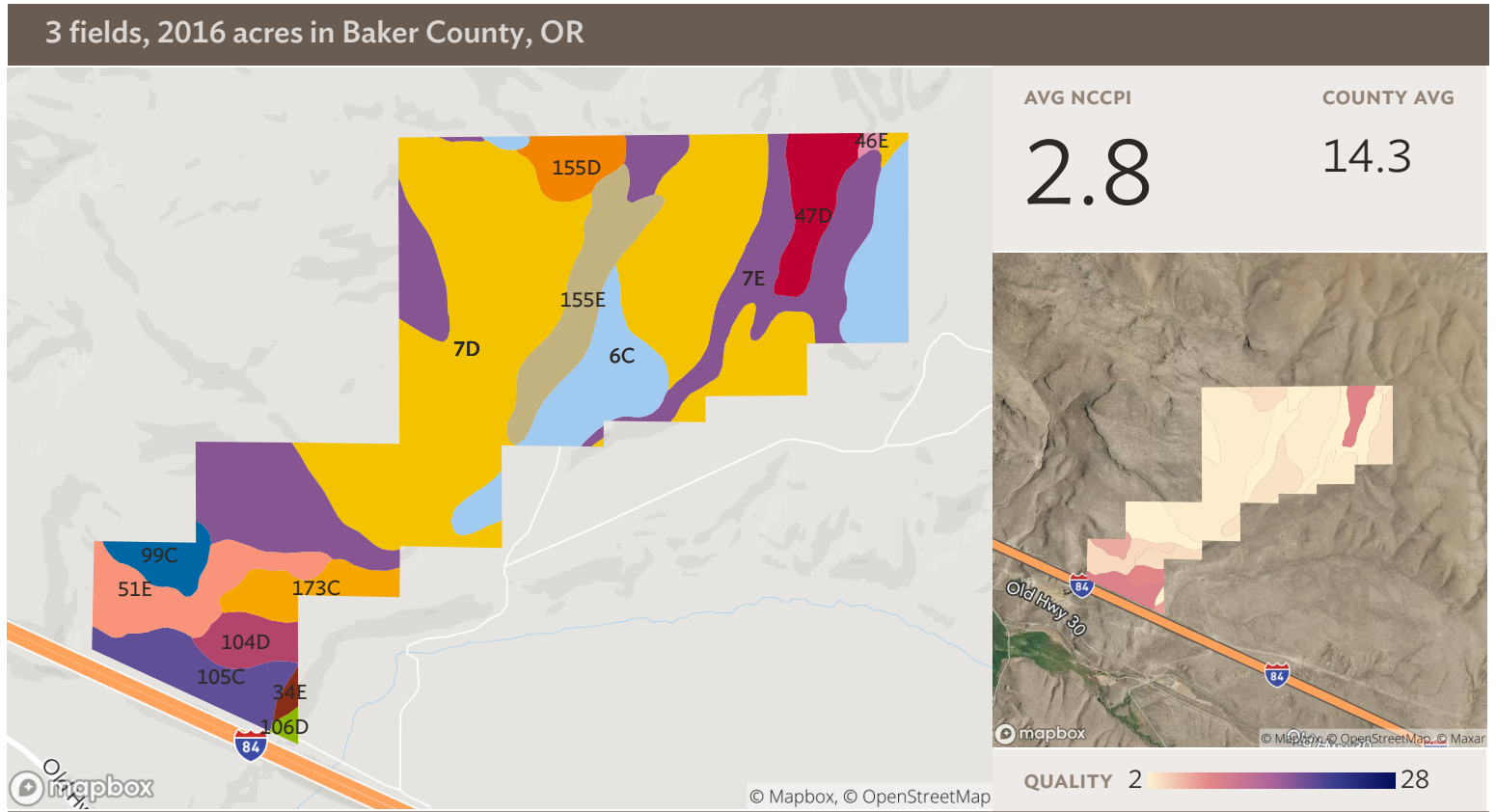
3 fields, 2016 acres in Baker County, OR


Field 2

Source: NRCS Soil Survey

398 ac

SOIL CODE	SOIL DESCRIPTION	ACRES	PERCENTAGE OF FIELD	SOIL CLASS	NCCPI
7E	Ateron very stony loam, 35 to 60 percent south slopes	194.81	48.9%	7	0.8
7D	Ateron very stony loam, 12 to 35 percent south slopes	170.75	42.8%	7	2.2
99C	Lookout very cobbly silt loam, 2 to 12 percent slopes	28.91	7.3%	6	6.3
6C	Ateron very stony loam, 2 to 12 percent slopes	3.72	0.9%	7	2.9
51E	Encina gravelly silt loam, 35 to 50 percent south slopes	0.29	0.1%	6	3.4
398.47					1.8



Field 3

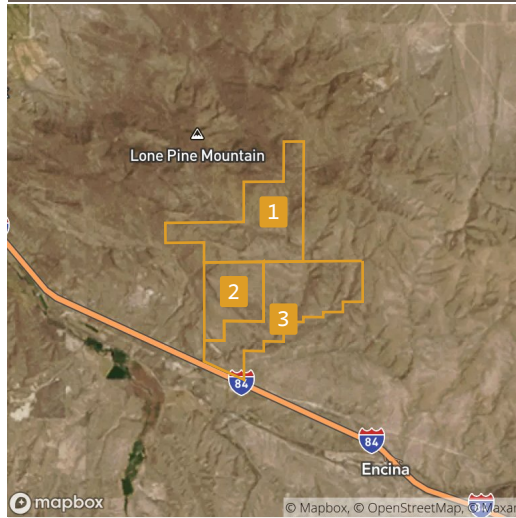
Source: NRCS Soil Survey

806 ac

SOIL CODE	SOIL DESCRIPTION	ACRES	PERCENTAGE OF FIELD	SOIL CLASS	NCCPI
7D	Ateron very stony loam, 12 to 35 percent south slopes	333.63	41.4%	7	2.2
7E	Ateron very stony loam, 35 to 60 percent south slopes	155.44	19.3%	7	0.8
6C	Ateron very stony loam, 2 to 12 percent slopes	87.80	10.9%	7	2.9
155E	Snell-Ateron complex, 35 to 60 percent north slopes	44.04	5.5%	6	1.0
51E	Encina gravelly silt loam, 35 to 50 percent south slopes	41.28	5.1%	6	3.4
105C	Marack gravelly silty clay loam, 2 to 12 percent slopes	34.19	4.2%	6	9.3
47D	Durkee gravelly silt loam, 12 to 35 percent south slopes	28.35	3.5%	4	8.7
173C	Wahstal very cobbly loam, 2 to 12 percent slopes	22.80	2.8%	7	3.2
155D	Snell-Ateron complex, 12 to 35 percent north slopes	19.60	2.4%	6	3.1

3 fields, 2016 acres in Baker County, OR

■	104D	Marack silt loam, 12 to 35 percent north slopes	17.20	2.1%	6	8.5
■	99C	Lookout very cobbly silt loam, 2 to 12 percent slopes	15.16	1.9%	6	6.3
■	34E	Campcreek-Skullgulch association, 35 to 60 percent slopes	2.66	0.3%	6	1.9
■	106D	Marack very gravelly silty clay loam, 12 to 35 percent south slopes	2.35	0.3%	6	7.0
■	46E	Durkee gravelly silt loam, 35 to 60 percent north slopes	1.61	0.2%	6	2.6
			806.12			2.8

3 fields, 2016 acres in Baker County, OR


All fields

2016 ac


2019
2018
2017
2016
2015

■ Non-Cropland

63.1%

99.9%

100.0%

100.0%

99.9%

■ Grass/Pasture

36.9%

–

–

–

0.1%

■ Other

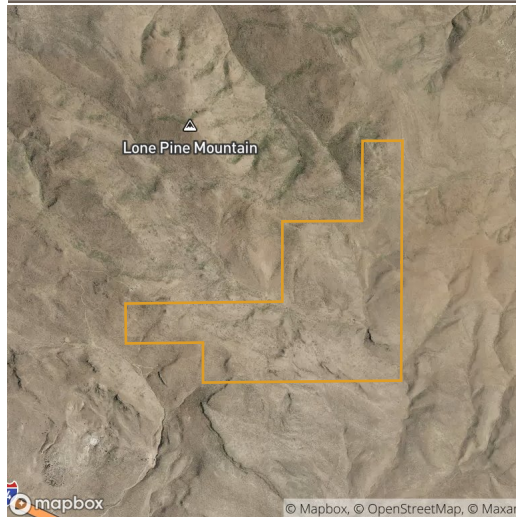
–

–

–

–

–



Field 1

811 ac


2019
2018
2017
2016
2015

■ Non-Cropland

69.0%

100.0%

100.0%

100.0%

100.0%

■ Grass/Pasture

31.0%

–

–

–

–



Field 2

398 ac


2019
2018
2017
2016
2015

■ Non-Cropland

56.7%

100.0%

100.0%

100.0%

100.0%

■ Grass/Pasture

43.3%

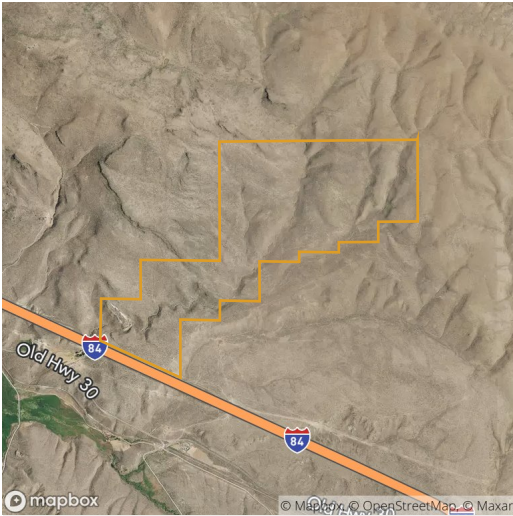
–

–

–






–

3 fields, 2016 acres in Baker County, OR



Field 3




806 ac

					
	2019	2018	2017	2016	2015
■ Non-Cropland	60.3%	99.9%	99.9%	100.0%	99.8%
■ Grass/Pasture	39.7%	0.1%	–	–	0.2%
■ Other	–	0.1%	–	–	–

Source: NASS Cropland Data Layer

3 fields, 2016 acres in Baker County, OR

Baker County, OR

FIELD	ACRES	LOCATION	OWNER (LAST UPDATED)	OWNER ADDRESS
1 	811.46	9S 41E - 29, 31, 32, 10S 41E - 5, 6 APN: 006140	RUFENACHT LAND & CATTLE CO INC (03/10/2020)	5060 N 40TH ST, 106, PHOENIX, AZ 85018
2 	398.47	10S 41E - 5, 6, 7 APN: 006556	RUFENACHT LAND & CATTLE CO INC (03/10/2020)	5060 N 40TH ST, 106, PHOENIX, AZ 85018
3 	806.12	10S 41E - 4, 5, 6, 7, 8 APN: 006555	RUFENACHT LAND & CATTLE CO INC (03/10/2020)	5060 N 40TH ST, 106, PHOENIX, AZ 85018

2,016.05

