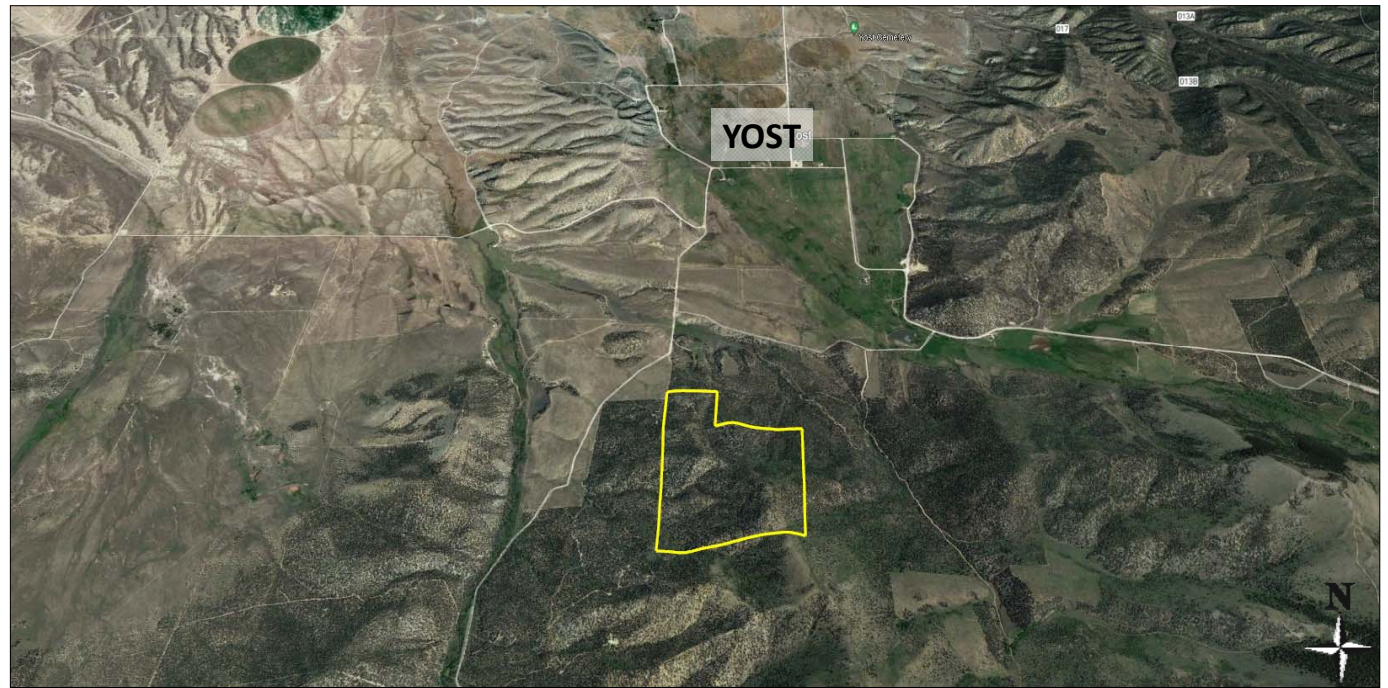


NEW LISTING

Yost Mountain Land

200 acres located in Box Elder County, Utah

See more information at www.hciutah.com



EXECUTIVE SUMMARY:

List Price: \$200,000

Mike Nelson | Joe Nelson

801-482-7565 | mike@hciutah.com

Notice: This information is believed to be accurate, but no warranty is expressed or implied. Highland Commercial insists that interested parties conduct their own research and investigations. The property is offered subject to prior sale, price change, and withdrawal without notice. No obligations will be created unless a purchase contract is signed by both buyer and seller. We welcome the cooperation of participating brokers; please contact us for our commission-sharing policies. All images and materials are copyright protected and are the property of Highland Commercial.

- 200 acres located south of Yost in Box Elder County, Utah
- Tax Parcels: 08-015-0064 and 08-084-0006, 2022 taxes: \$100.06
- Currently unzoned in Box Elder County (no minimum lot size)
- No water rights owned by Seller
- Elevation ranges from 6,400 feet to 7,200 feet
- Two miles south of Yost, Utah
- 20 miles northeast of Grouse Creek, Utah
- 40 miles west of Snowville, Utah
- 62 miles southeast of Twin Falls, Idaho
- 115 miles northwest of Salt Lake City, Utah



2733 East Parley's Way, Suite 208

Salt Lake City, UT 84109

801-487-6100

www.hciutah.com

