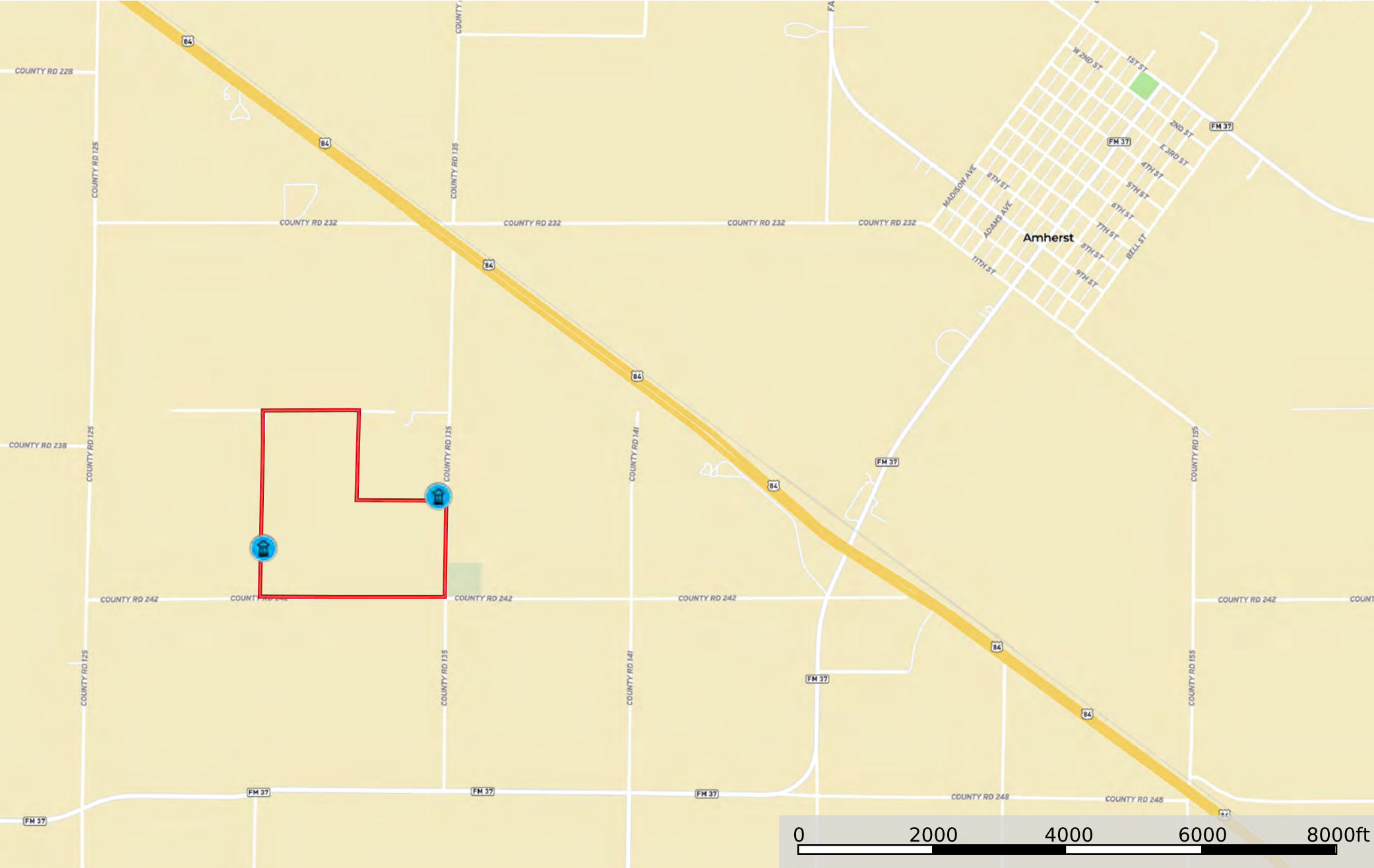


Well Boundary

Lamb 149 - Meyer
Lamb County, Texas, 137.1 AC +/-



Well Boundary



 Well  Boundary

| Boundary 133.57 ac

SOIL CODE	SOIL DESCRIPTION	ACRES	%	CPI	NCCPI	CAP
AfB	Amarillo fine sandy loam, 1 to 3 percent slopes	64.19	48.06	0	46	3e
AfA	Amarillo fine sandy loam, 0 to 1 percent slopes	50.02	37.45	0	47	3e
OtA	Olton loam, 0 to 1 percent slopes	9.84	7.37	0	51	3e
Ra	Randall clay, 0 to 1 percent slopes, occasionally ponded	9.52	7.13	0	17	6w
TOTALS		133.57(*)	100%	-	44.68	3.21









(*) Total acres may differ in the second decimal compared to the sum of each acreage soil. This is due to a round error because we only show the acres of each soil with two decimal.

Capability Legend

Increased Limitations and Hazards

Decreased Adaptability and Freedom of Choice Users

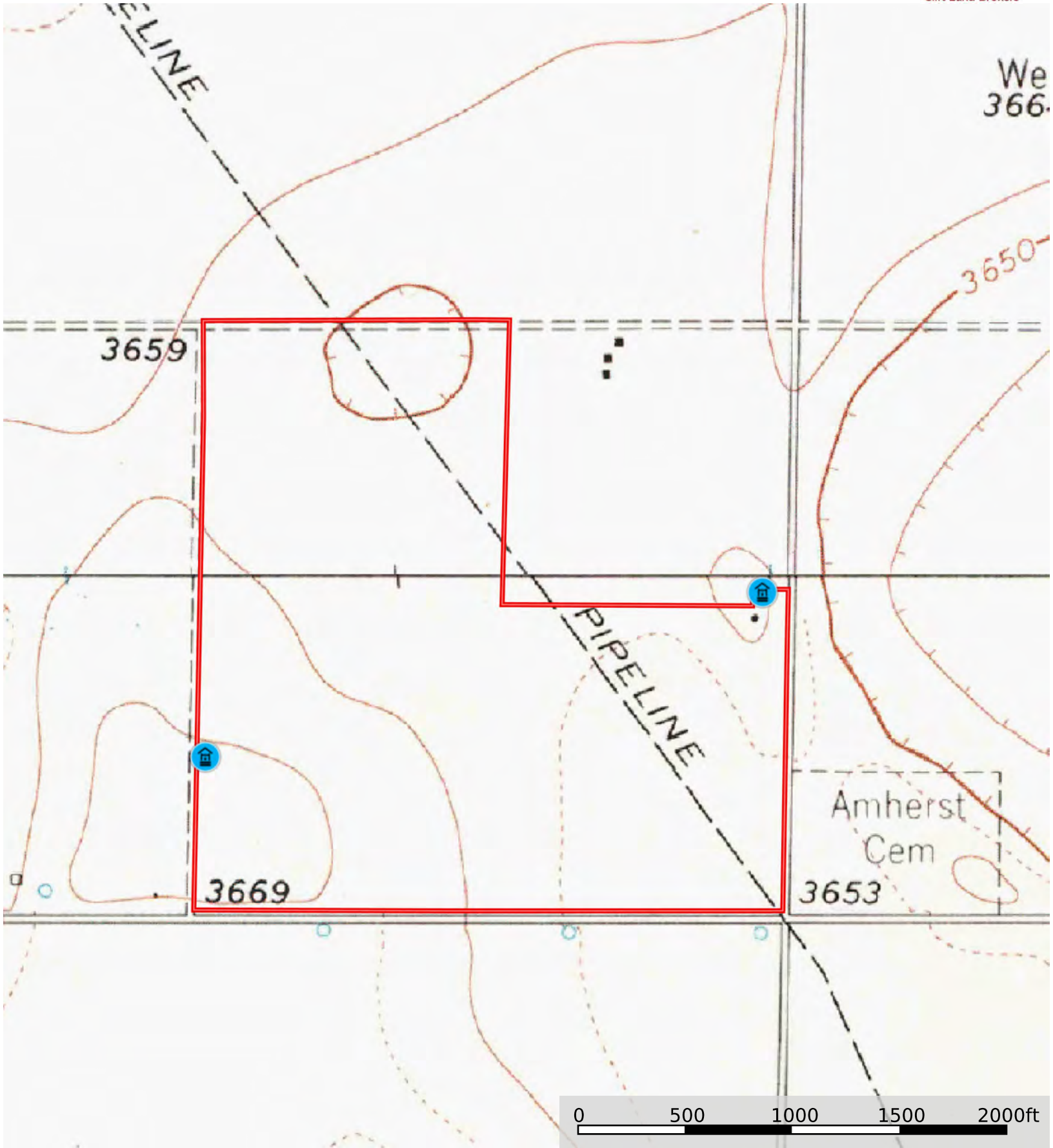
Land, Capability

								
	1	2	3	4	5	6	7	8
'Wild Life'	•	•	•	•	•	•	•	•
Forestry	•	•	•	•	•	•	•	
Limited	•	•	•	•	•	•	•	
Moderate	•	•	•	•	•	•		
Intense	•	•	•	•	•			
Limited	•	•	•	•				
Moderate	•	•	•					
Intense	•	•						
Very Intense	•							

Grazing Cultivation

(c) climatic limitations (e) susceptibility to erosion

(s) soil limitations within the rooting zone (w) excess of water



Well Boundary