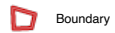


290 Rocky Creek Rd Medina, TX 78055
Bandera County, Texas, 22.06 AC +/-

BROKERED BY
exp
REALTY



Boundary

Sissy duPerier
P: 830-796-5558

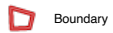
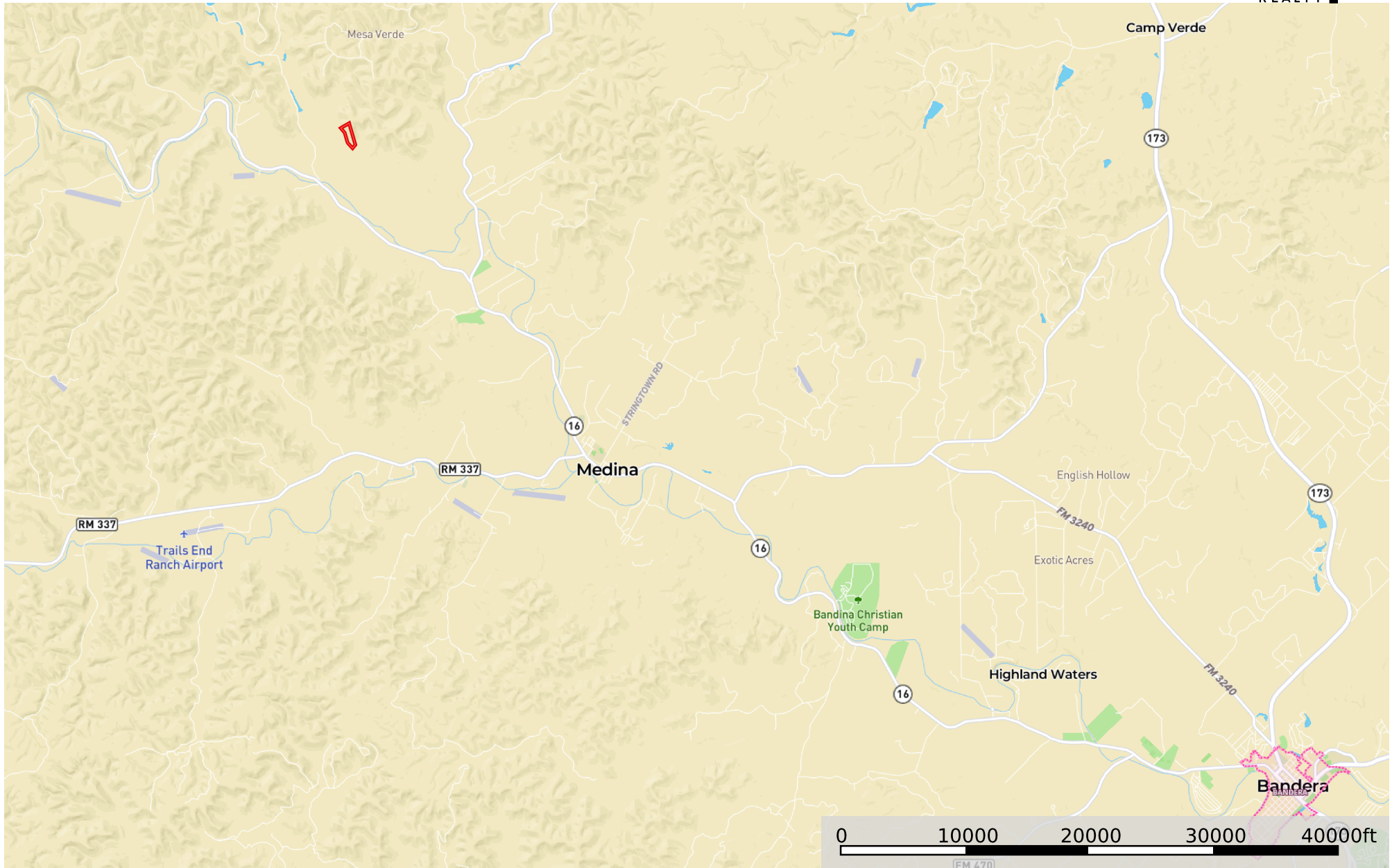
www.sissyduperier.exprealty.com

611 Main St Ste. 2 Bandera, TX 78003

M The information contained herein was obtained from sources deemed to be reliable. MapRight Services makes no warranties or guarantees as to the completeness or accuracy thereof.

Cindy & Scott Murray - 290 Rocky Creek Rd Medina, TX
Bandera County, Texas, 22.06 AC +/-

BROKERED BY
exp
REALTY



Boundary

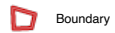
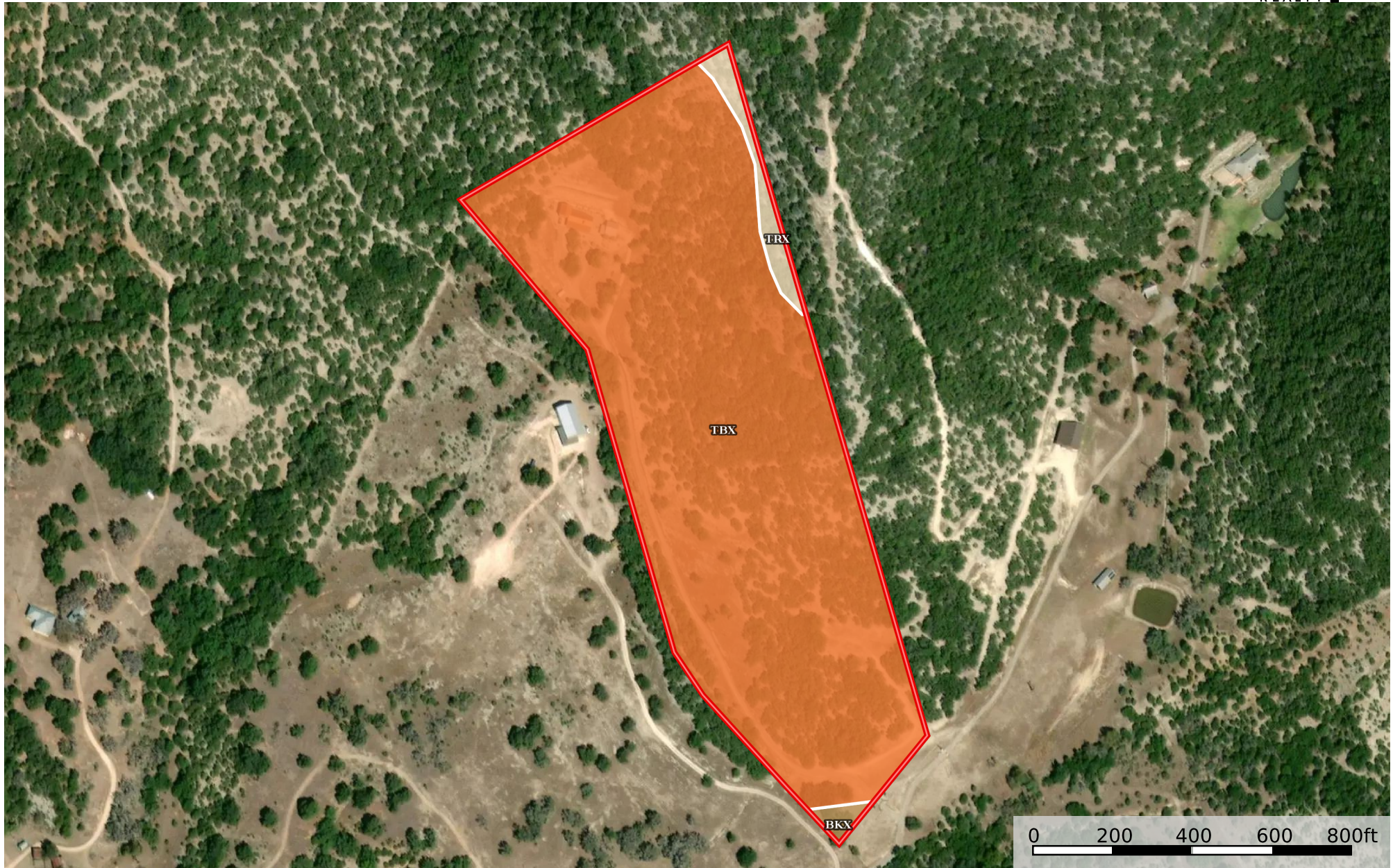
Sissy duPerier
P: 830-796-5558

www.sissyduperier.exprealty.com

611 Main St Ste. 2 Bandera, TX 78003



The information contained herein was obtained from sources deemed to be reliable. MapRight Services makes no warranties or guarantees as to the completeness or accuracy thereof.



Boundary



I Boundary 23.35 ac

SOIL CODE	SOIL DESCRIPTION	ACRES	%	CPI	NCCPI	CAP
TBX	Eckrant-Kerrville association, steep	22.5	96.36	0	3	7s
TRX	Eckrant-Rock outcrop association, 1 to 10 percent slopes	0.67	2.87	0	9	7e
BKX	Kerrville gravelly clay loam, 1 to 8 percent slopes	0.18	0.77	0	25	4e
TOTALS		23.35(*)	100%	-	3.34	6.98

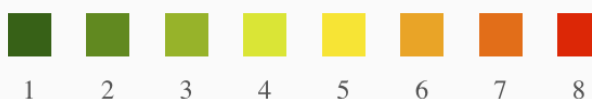
(*) Total acres may differ in the second decimal compared to the sum of each acreage soil. This is due to a round error because we only show the acres of each soil with two decimal.

Capability Legend

Increased Limitations and Hazards

Decreased Adaptability and Freedom of Choice Users

Land, Capability



'Wild Life'

• • • • • • • •

Forestry

• • • • • • •

Limited

• • • • • • •

Moderate

• • • • • •

Intense

• • • • •

Limited

• • • •

Moderate

• • •

Intense

• •

Very Intense

•

Grazing Cultivation

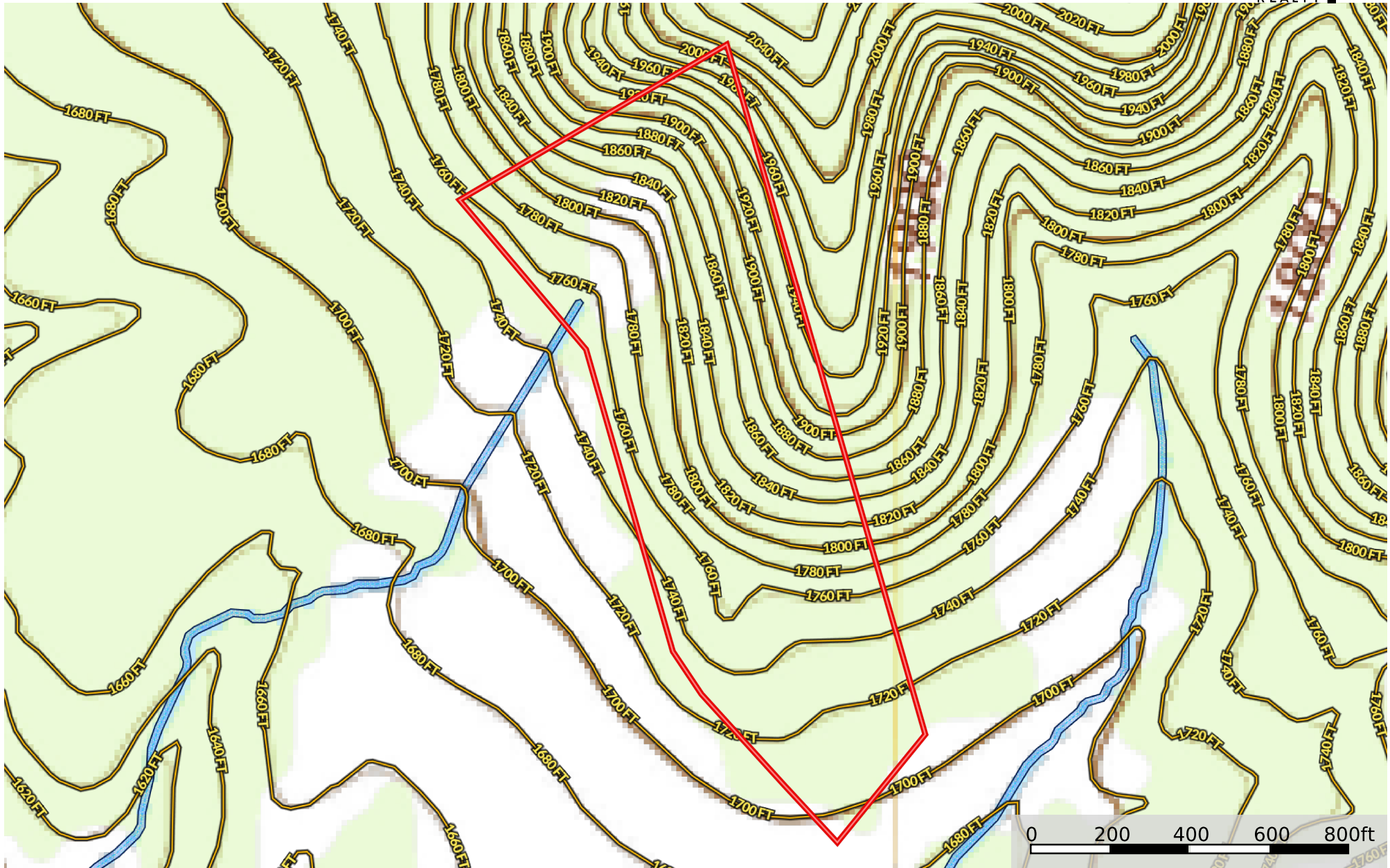
(c) climatic limitations (e) susceptibility to erosion

(s) soil limitations within the rooting zone (w) excess of water

290 Rocky Creek Rd Medina, TX 78055

Bandera County, Texas, 22.06 AC +/-

BROKERED BY
exp
REALTY



Boundary Wetlands Riparian Stream, Intermittent River/Creek Water Body

Sissy duPerier

P: 830-796-5558

www.sissyduperier.exp Realty.com

611 Main St Ste. 2 Bandera, TX 78003



The information contained herein was obtained from sources deemed to be reliable. MapRight Services makes no warranties or guarantees as to the completeness or accuracy thereof.