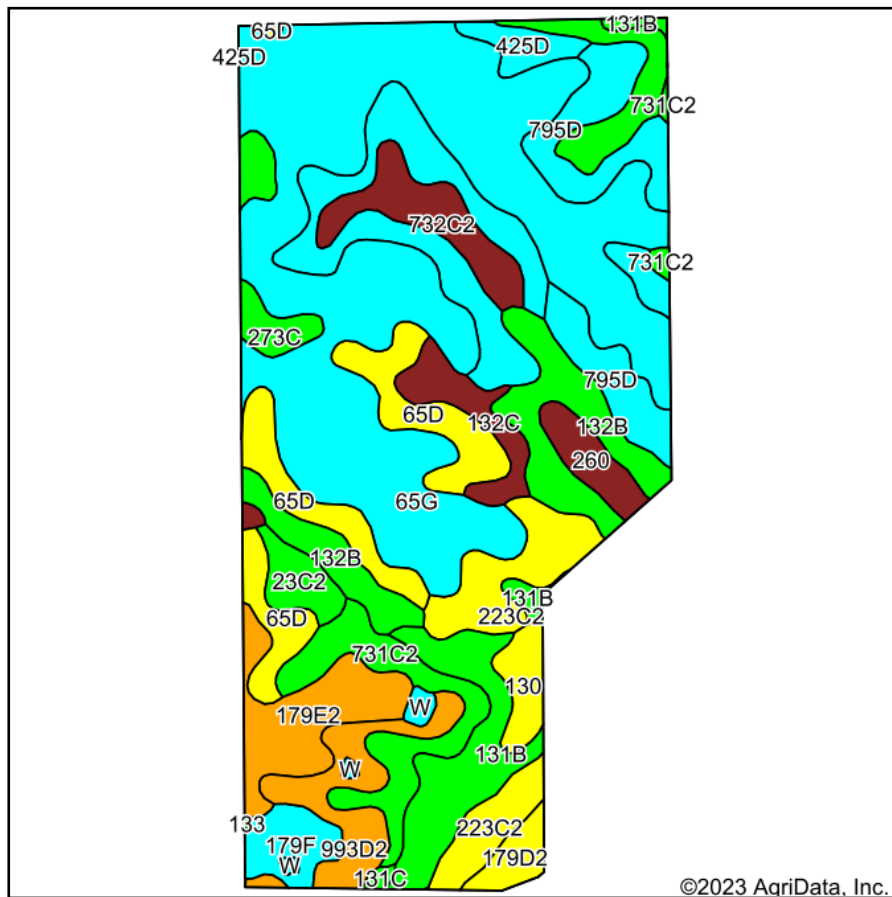
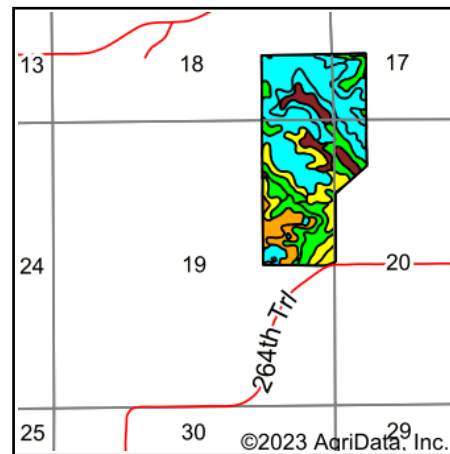


Soils Map



Soils data provided by USDA and NRCS.



State: **Iowa**
 County: **Monroe**
 Location: **19-71N-17W**
 Township: **Monroe**
 Acres: **154**
 Date: **3/13/2023**

Hawkeye Farm Mgmt & Real Estate

United Country Real Estate
 22 N Main, Albion IA Phone: 641-932-7796
 Email: hawkeye@uciowa.com
 On the web: www.uciowa.com
 www.iowawhitehallfarms.com

Maps Provided By:

surety
 CUSTOMIZED ONLINE MAPPING
 © AgriData, Inc. 2023 www.AgriDataInc.com



Area Symbol: IA135, Soil Area Version: 30

Code	Soil Description	Acres	Percent of field	CSR2 Legend	Non-Irr Class *c	CSR2**	CSR	*n NCCPI Soybeans
65G	Lindley loam, 18 to 40 percent slopes	50.29	32.7%		Vlle	6	5	12
425D	Keswick loam, 9 to 14 percent slopes	12.22	7.9%		IVe	8	16	44
65D	Lindley loam, 9 to 14 percent slopes	10.85	7.0%		IVe	43	40	63
795D	Ashgrove silt loam, 9 to 14 percent slopes	10.00	6.5%		IVe	5	12	50
132B	Weller silt loam, 2 to 5 percent slopes	9.70	6.3%		IIle	67	60	80
131B	Pershing silt loam, 2 to 5 percent slopes	8.08	5.2%		IIle	70	67	59
223C2	Rinda silty clay loam, 5 to 9 percent slopes, moderately eroded	8.02	5.2%		IVw	45	22	46
731C2	Pershing silty clay loam, 5 to 9 percent slopes, moderately eroded	6.86	4.5%		IIle	62	45	56
179E2	Gara loam, 14 to 18 percent slopes, moderately eroded	6.47	4.2%		Vle	35	33	51
993D2	Gara-Armstrong loams, 9 to 14 percent slopes, moderately eroded	5.43	3.5%		IVe	35	20	48
732C2	Weller silty clay loam, 5 to 9 percent slopes, moderately eroded	4.94	3.2%		IIle	59	40	67
131C	Pershing silt loam, 5 to 9 percent slopes	3.67	2.4%		IIle	65	49	58
132C	Weller silt loam, 5 to 9 percent slopes	3.16	2.1%		IIle	59	44	73
179F	Gara loam, 18 to 25 percent slopes	2.75	1.8%		Vle	19	15	42
273C	Olmitz loam, heavy till, 5 to 9 percent slopes	2.63	1.7%		IIle	77	57	71
260	Beckwith silt loam, 0 to 2 percent slopes	2.37	1.5%		IIlw	51	56	62
23C2	Arispe silty clay loam, 5 to 9 percent slopes, moderately eroded	2.12	1.4%		IIle	62	50	67
130	Belinda silt loam, 0 to 2 percent slopes	2.11	1.4%		IIlw	47	63	57
179D2	Gara loam, 9 to 14 percent slopes, moderately eroded	1.66	1.1%		IVe	43	43	52
W	Water	0.67	0.4%			0	0	
Weighted Average					*-	30.7	26.5	*n 42.2

**IA has updated the CSR values for each county to CSR2.

*n: The aggregation method is "Weighted Average using all components"

*c: Using Capabilities Class Dominant Condition Aggregation Method

*- Non Irr Class weighted average cannot be calculated on the current soils data due to missing data.

Soils data provided by USDA and NRCS.