

# PARCEL MAP

## TALKING ROCK CREEK PROPERTIES, INC.

### LAND LOTS 103, 114 & 115

### 24th DISTRICT, 2nd SECTION

### GORDON COUNTY, GEORGIA

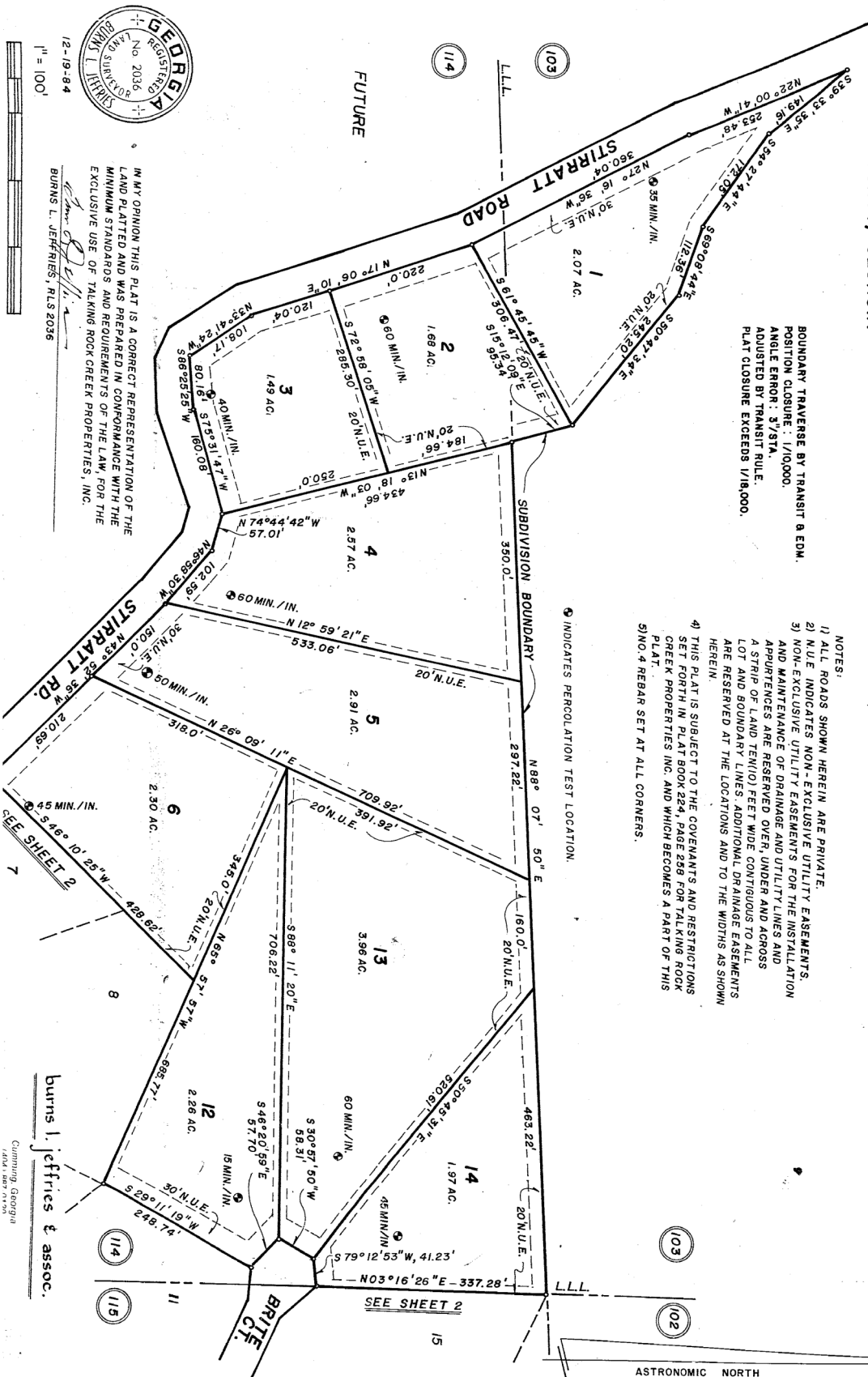
*Fielding office 1-15-85 2 P.M.  
Donnelly Cadden, Reg.*

GROSS AREA, 55 ACRES  
LOTS, 24  
ROAD LENGTH, 1.0+ MILES

BOUNDARY TRAVERSE BY TRANSIT & EDM.  
POSITION CLOSURE: 1/10,000.  
ANGLE ERROR: 3"/STA.  
ADJUSTED BY TRANSIT RULE.  
PLAT CLOSURE EXCEEDS 1/18,000.

- NOTES:
- 1) ALL ROADS SHOWN HEREIN ARE PRIVATE.
  - 2) N.U.E. INDICATES NON-EXCLUSIVE UTILITY EASEMENTS.
  - 3) NON-EXCLUSIVE UTILITY EASEMENTS FOR THE INSTALLATION AND MAINTENANCE OF DRAINAGE AND UTILITY LINES AND APPURTENANCES ARE RESERVED OVER, UNDER AND ACROSS A STRIP OF LAND TEN(10) FEET WIDE CONTIGUOUS TO ALL LOT AND BOUNDARY LINES. ADDITIONAL DRAINAGE EASEMENTS ARE RESERVED AT THE LOCATIONS AND TO THE WIDTHS AS SHOWN HEREIN.
  - 4) THIS PLAT IS SUBJECT TO THE COVENANTS AND RESTRICTIONS SET FORTH IN PLAT BOOK 224, PAGE 226 FOR TALKING ROCK CREEK PROPERTIES, INC. AND WHICH BECOMES A PART OF THIS PLAT.
  - 5) NO. 4 REBAR SET AT ALL CORNERS.

INDICATES PERCOLATION TEST LOCATION.



12-19-84  
1" = 100'

IN MY OPINION THIS PLAT IS A CORRECT REPRESENTATION OF THE LAND PLATTED AND WAS PREPARED IN CONFORMANCE WITH THE MINIMUM STANDARDS AND REQUIREMENTS OF THE LAW FOR THE EXCLUSIVE USE OF TALKING ROCK CREEK PROPERTIES, INC.

*Burns L. Jeffries, RLS 2036*

Burns L. Jeffries & Assoc.

Cumtong, Georgia  
1001 N. Main Street