

WAPELLO COUNTY ACREAGE FOR SALE



15398 173rd Avenue
Ottumwa, IA 52501

\$319,500

Spacious Indoor Living



The main living area features vaulted ceilings, a fireplace and beautiful shiplap. Providing easy access to the bedrooms, bathroom, and main floor laundry!



The kitchen offers a bright and open concept, highlighting the opportunity to enjoy the large exterior deck!



The dining area offers plenty of space to host others and enjoy the Southern Iowa scenery!

Outdoor Living

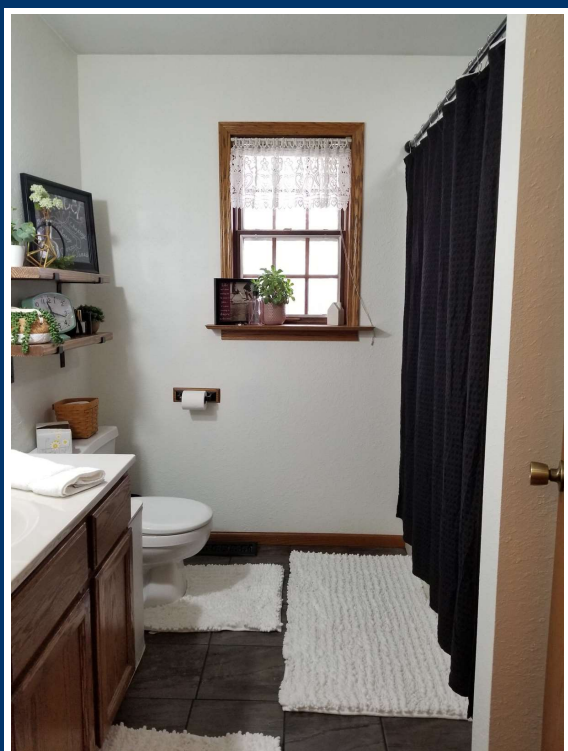
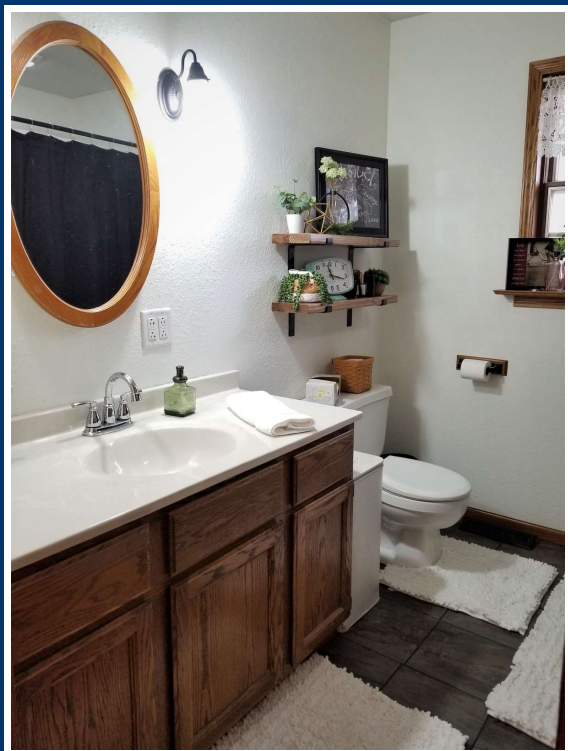


From the kitchen, step out to the 14'x42' deck and enjoy the beautiful Southern Iowa scenery while you cook in the outdoor kitchen, which includes a Bose weather resistant sound system! Don't overlook the grand staricase offering easy access to the expansive yard, flower beds and patio!

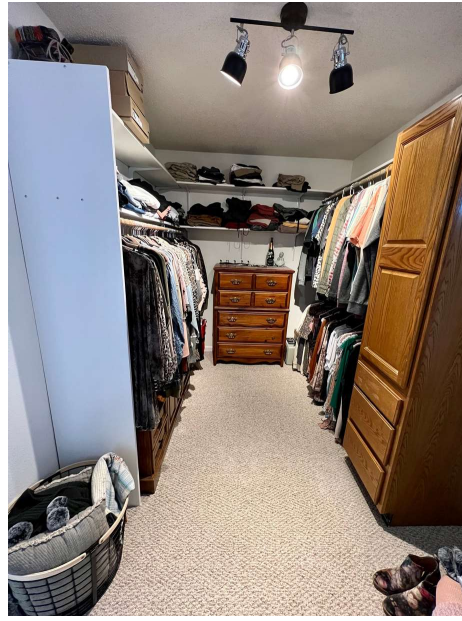


Main Floor Extras

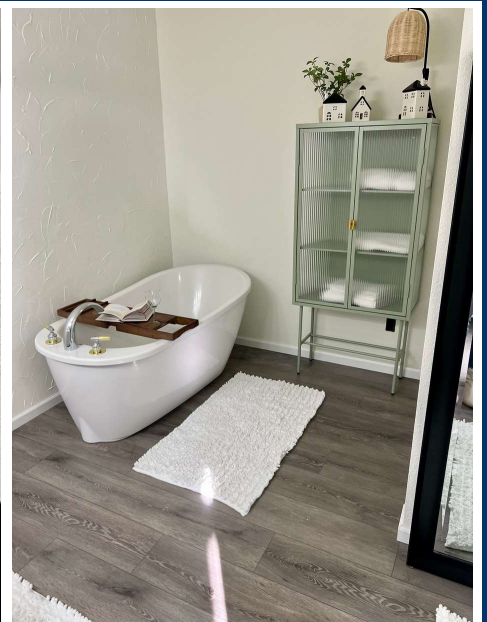
The main floor includes a second bathroom along with a large laundry room! This laundry room is a great space that could be used for storage, a home office or even an additional bedroom!



Updated Primary Bedroom & On Suite



The primary bedroom has undergone a complete remodel the past few of weeks! The bathroom now has a double vanity, large walk-in shower, luxurious soaker tub, and a toilet closet! This sizeable bedroom, large walk-in closet, deck access, and stunnign bathroom creates a relaxing space to start and end your day.



Full Basement



This spacious basement offers two additional living areas, another bedroom, utility room, storage areas, and even a commercial kitchen! This commercial kitchen has been built to code and offers many great opportunities!



The Workshop & Additional Detached Gargage



This spacious 32'x30' workshop, built in 2018, offers a great space for a home office or bonus area! The workshop is insulated, and includes heat and AC.

The workshop is fully finished with shiplap walls, Pella windows and doors, an overhead door, 100-amp electrical panel and a stamped covered french porch!

As an added bonus to the attached 2-car garage there is an additional detached, insulated garage. This space offers extra storage space or even additional parking space. This detached gargage has new siding and vinyl windows!

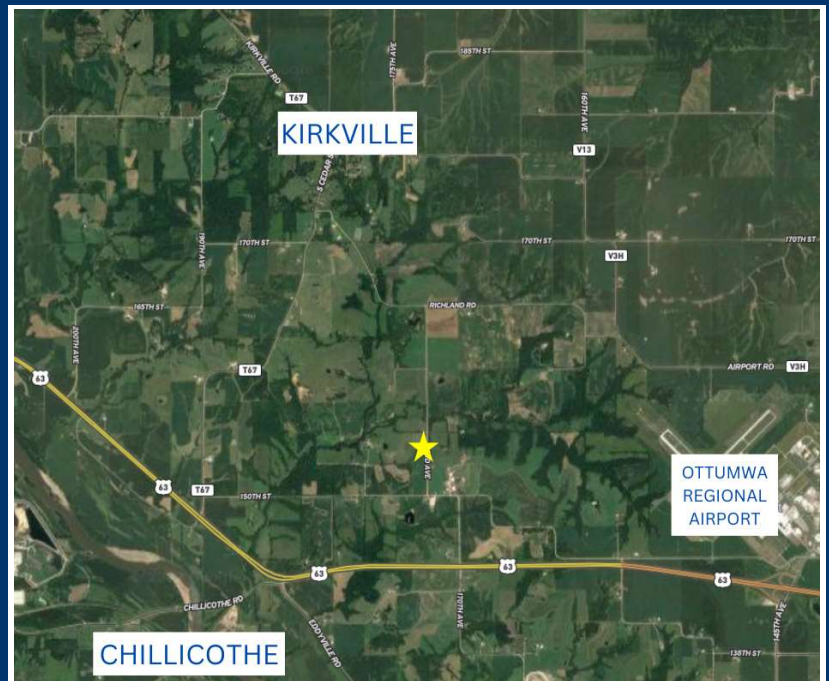


Scenic Views & Great Location



Whether you are looking for your dream property, a place to play or simply searching for that highly sought-after rural lifestyle- this stunning acreage is it!

Located just North of Highway 63, between Chillicothe, Kirksville, and the Ottumwa Regional Airport



Don't miss the opportunity to purchase an attractive Southern Iowa home!



**Hawkeye
Farm Mgmt &
Real Estate**

CONTACT US TO SCHEDULE A TOUR!

Allyson Ryan-Haberman & Wanda Flahive



Realtor®

Licensed in Iowa

(641)799-3031

Allyson@uciowa.com

Realtor®

Licensed in Iowa

(641)777-2419

Wanda@uciowa.com

www.UCIowa.com