

# Wayland Springs Farm | 119 ± Acres



## Facts and Features

**Lawrence County County, TN**

Wayland Springs Rd , Iron City, TN 38463

119± Acres

## About the Property

Looking for a tranquil retreat to get away from it all and enjoy with your family and friends? This secluded property with private access along the deeded easement offers numerous possibilities for the outdoor adventurer. Whether you are a hunter dedicated to outsmarting that mature buck or your passion lies in calling in a mature tom turkey, this entire area of Tennessee boasts superior quantity and quality of both deer and turkey. Land is predominantly younger hardwood timberland, with potential for future return.



## For Sale

\$224,900



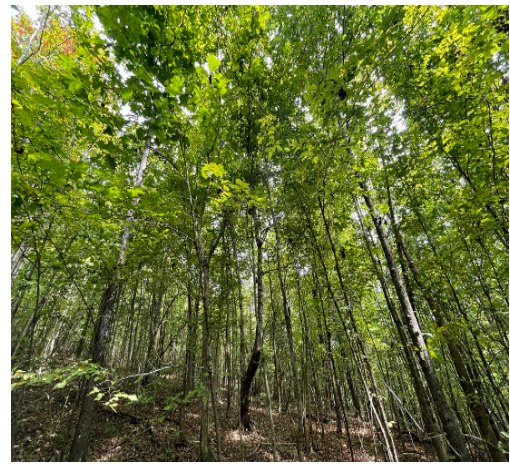
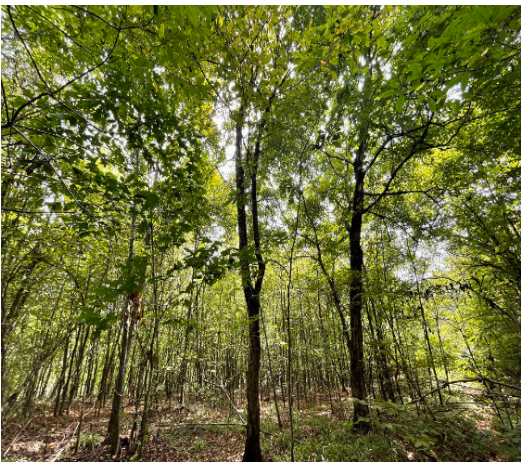
**SOUTH MAIN  
LAND REALTY**

### Clyde Brisendine

O: (256) 383-8990 | C: (256) 627-1975  
cbrisendine@SouthMainRealty.com



# Wayland Springs Farm | 119 ± Acres

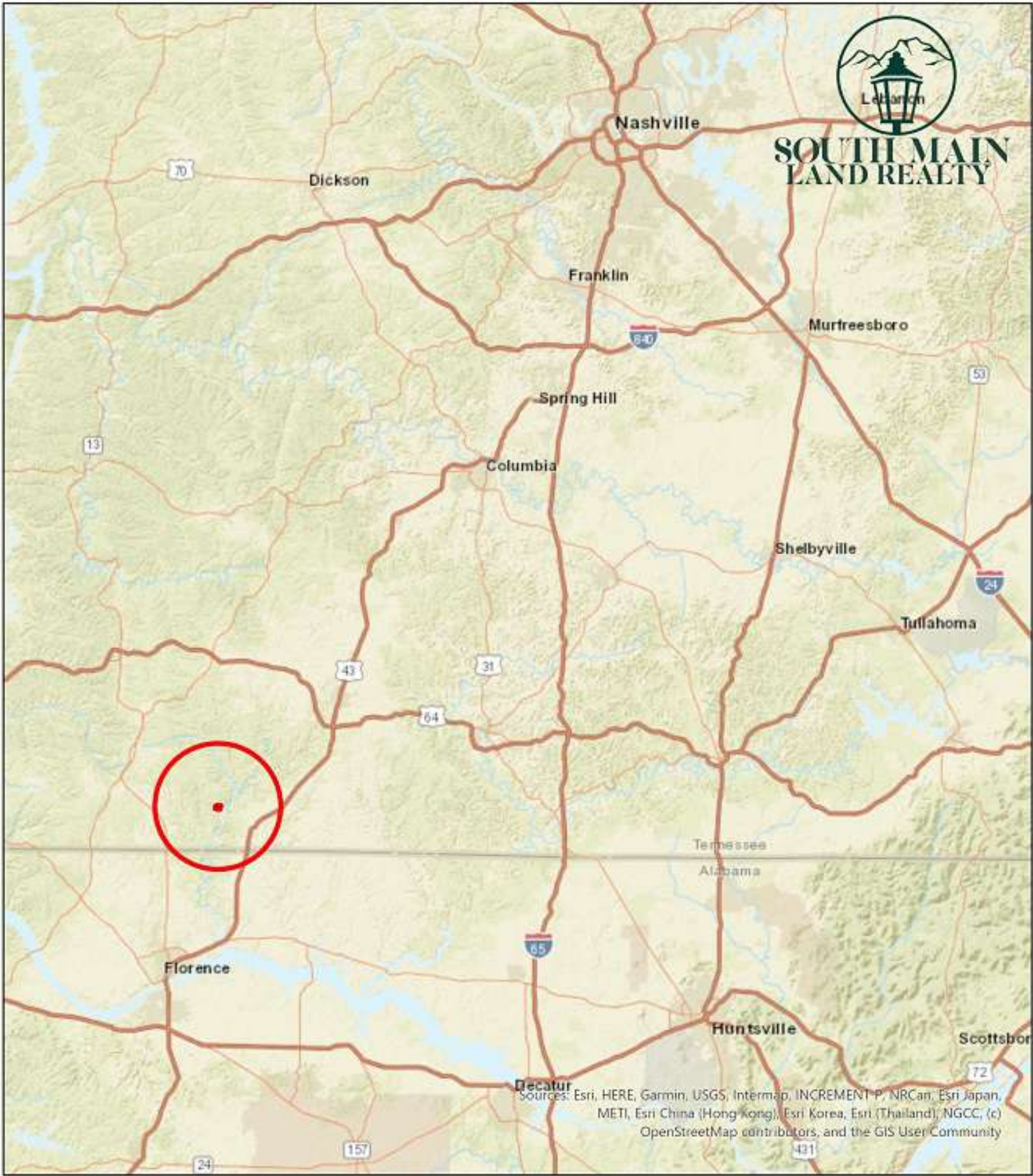


**SOUTH MAIN  
LAND REALTY**

**Clyde Brisendine**

O: (256) 383-8990 | C: (256) 627-1975  
cbrisendine@SouthMainRealty.com





zDBE01  
Lawrence County, AL  
Regional



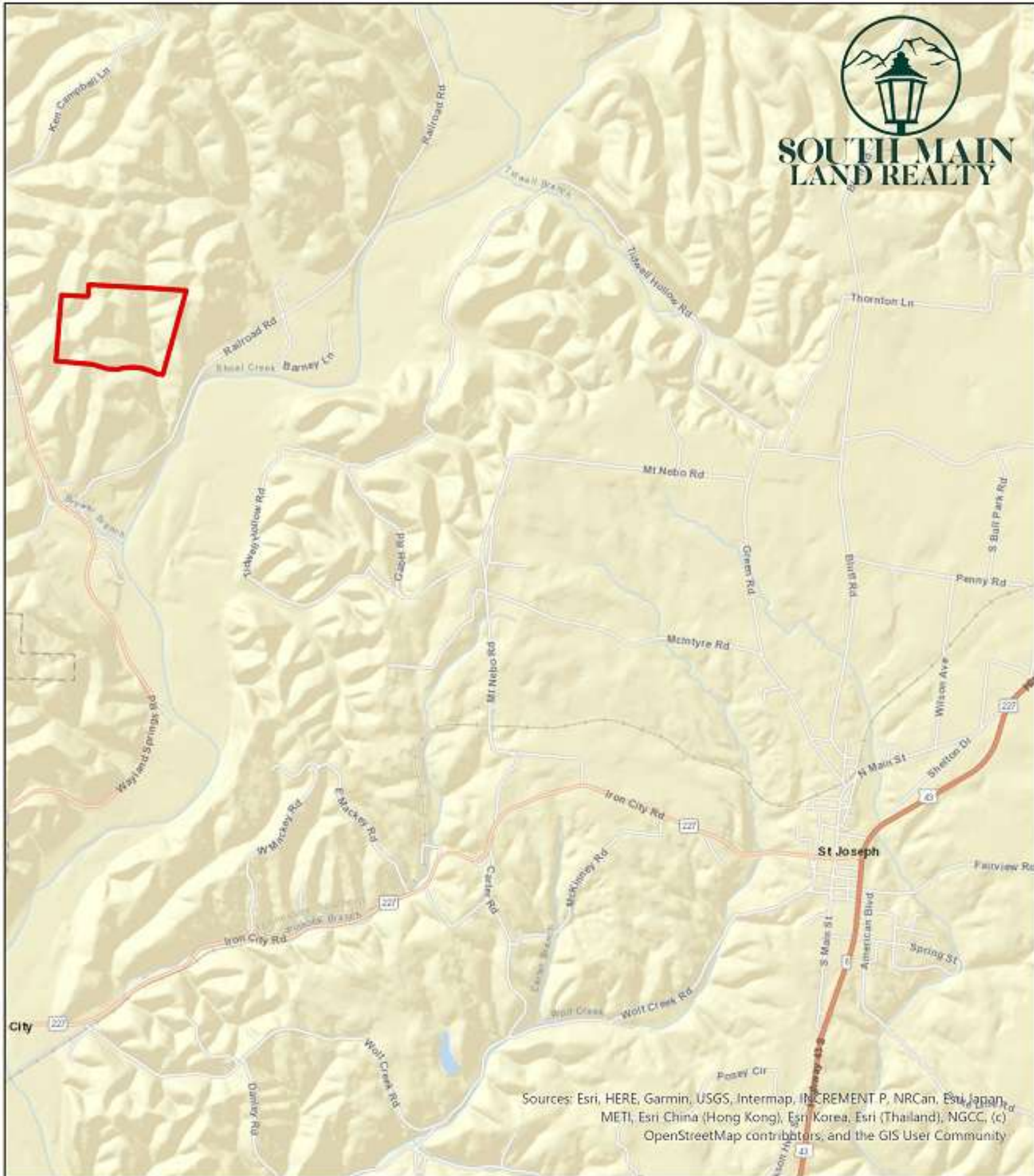
South Main Land Realty  
(256) 383-8990

0 5 10 20 30  
Miles





**SOUTH MAIN  
LAND REALTY**



Sources: Esri, HERE, Garmin, USGS, Intermap, INCREMENT P, NRCan, Esri Japan, METI, Esri China (Hong Kong), Esri Korea, Esri (Thailand), NGCC, (c) OpenStreetMap contributors, and the GIS User Community

**zDBE01**  
**Lawrence County, AL**  
**Local Roads**

South Main Land Realty  
(256) 383-8990

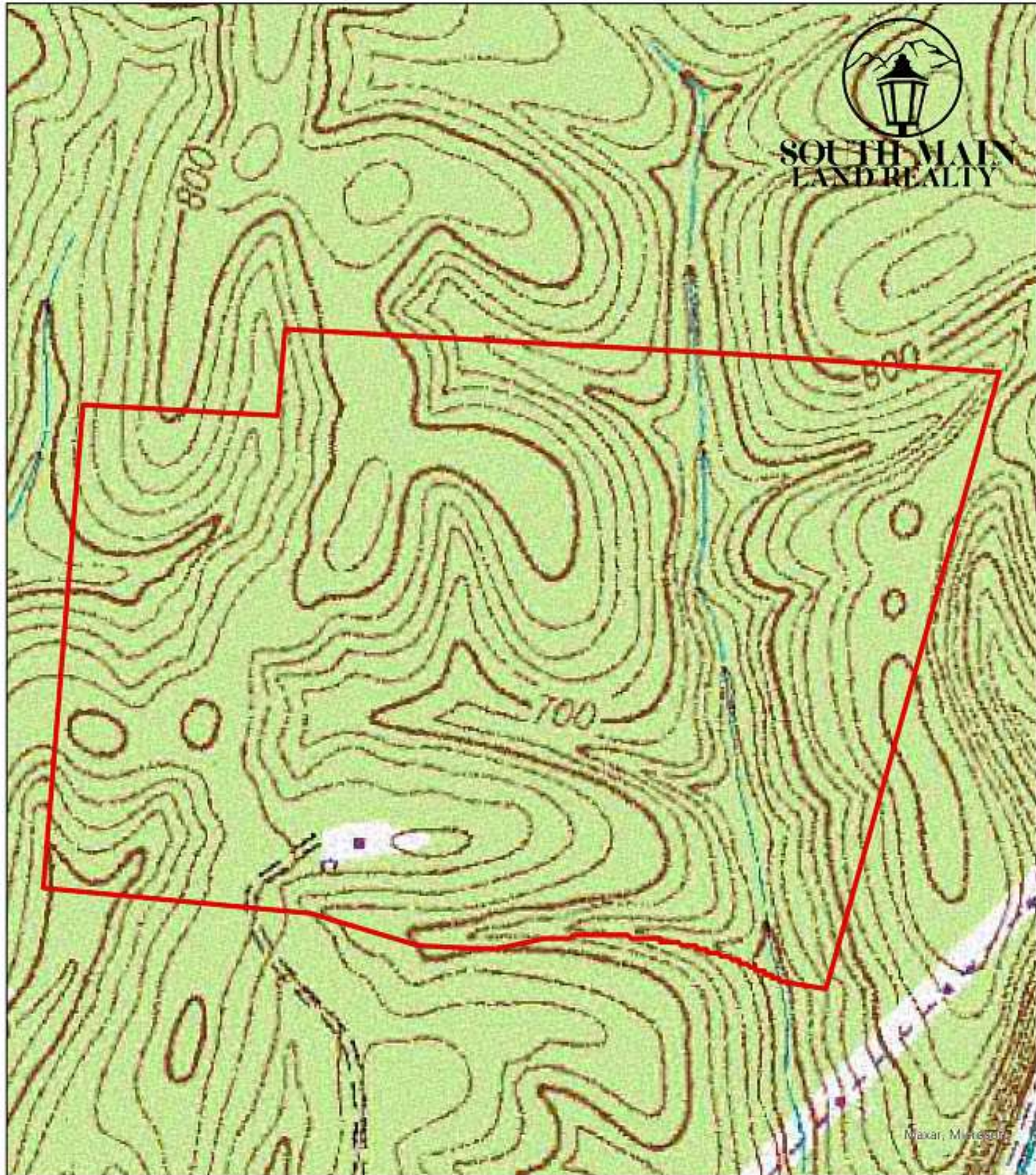


0 0.38 0.75 1.5  
Miles





**SOUTH MAIN  
LAND REALTY**



Maxar, Missouri

zDBE01  
Lawrence County, AL  
Topography

South Main Land Realty  
(256) 383-8990



0 295 590 1,180  
Feet





**SOUTH MAIN  
LAND REALTY**



*Mapas, Microsoft*

zDBE01  
Lawrence County, AL  
Aerial

South Main Land Realty  
(256) 383-8990

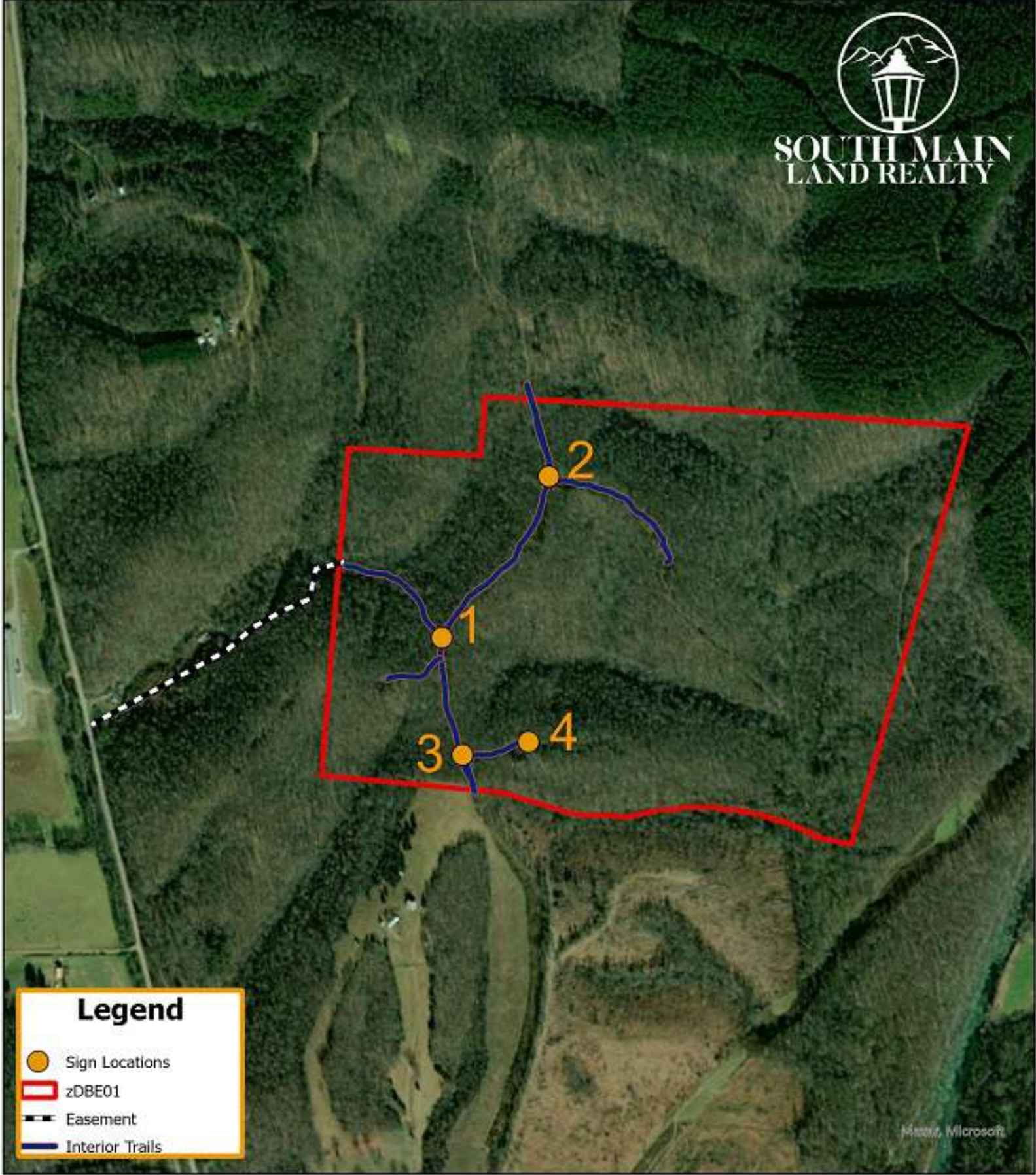


0 300 600 1,200  
Feet





**SOUTH MAIN  
LAND REALTY**



Map, Microsoft

### Legend

- Sign Locations
- zDBE01
- Easement
- Interior Trails

**zDBE01**  
**Lawrence County, AL**  
**Trails and Sign Locations**

South Main Land Realty  
(256) 383-8990



0 437.5 875 1,750  
Feet