

ZINK

S-20, 1552

U.S. HWY. 64

6.84 AC,

S.R. 1145

41.88 ACS.

ZANE
M-25, 1159
M-25, 1163

PARKER
P-5, 108
Q-22, 1407



N.C.G.S. CONTROL MONUMENT
"SLAGLE"

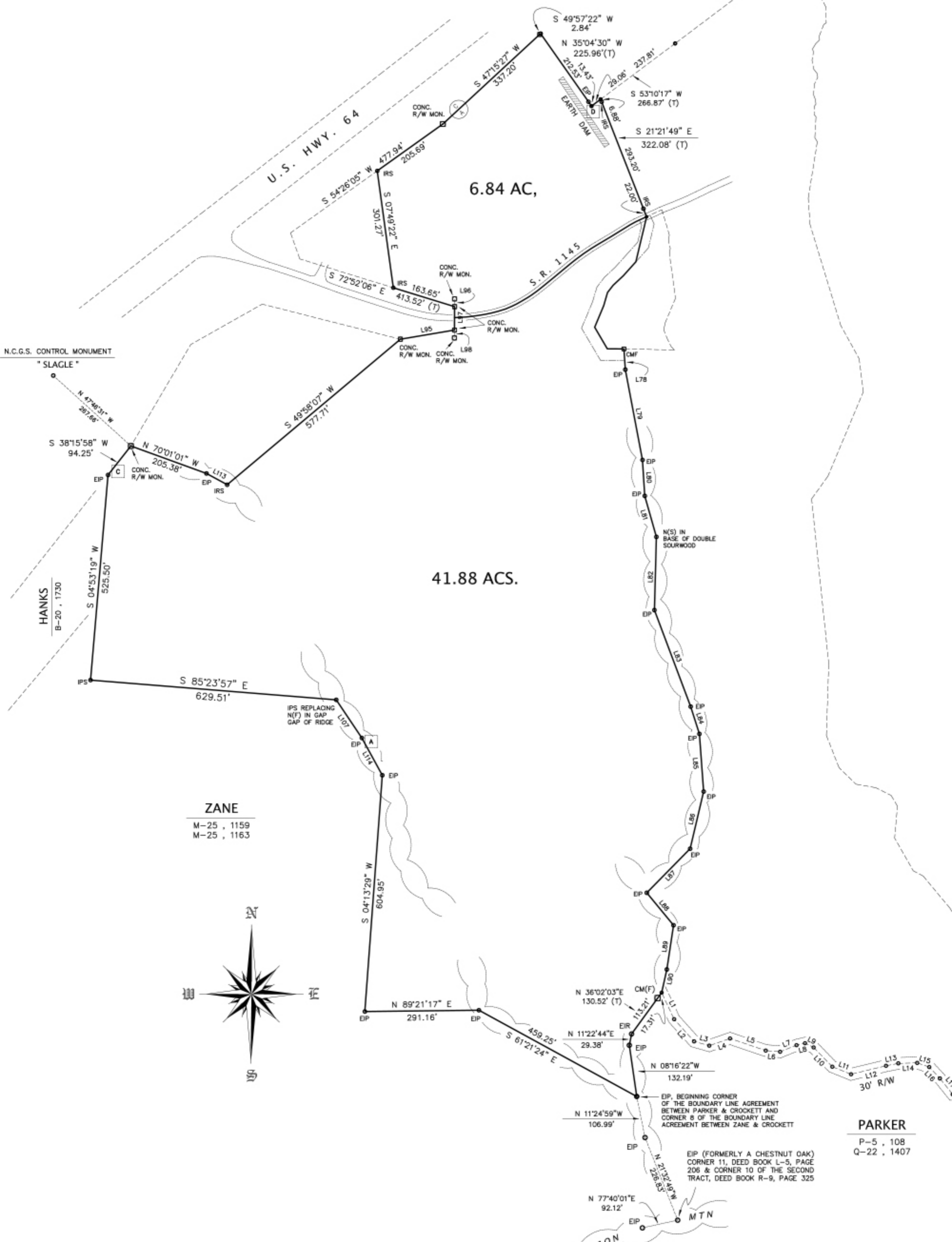
HANKS
B-20, 1730

IPS REPLACING N(F) IN GAP OF RIDGE

N(S) IN BASE OF DOUBLE SOURWOOD

EIP, BEGINNING CORNER OF THE BOUNDARY LINE AGREEMENT BETWEEN PARKER & CROCKETT AND CORNER 8 OF THE BOUNDARY LINE AGREEMENT BETWEEN ZANE & CROCKETT

EIP (FORMERLY A CHESTNUT OAK) CORNER 11, DEED BOOK L-5, PAGE 206 & CORNER 10 OF THE SECOND TRACT, DEED BOOK R-9, PAGE 325



ZINK

S-20, 1552

6.84 AC,

Tract 1

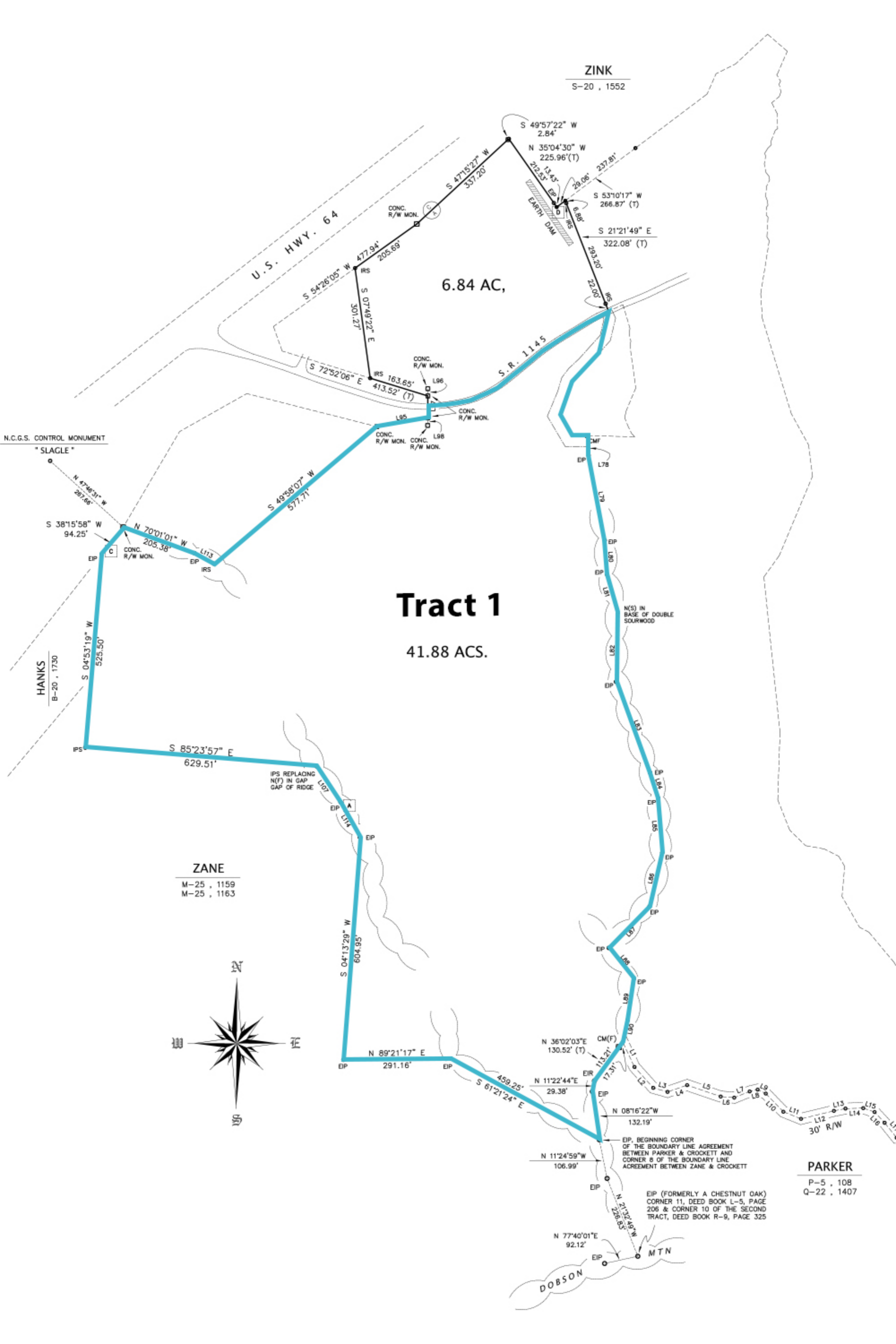
41.88 ACS.

ZANE

M-25, 1159
M-25, 1163

PARKER

P-5, 108
Q-22, 1407



ZINK

S-20, 1552

Tract 2

6.84 AC,

41.88 ACS.

U.S. HWY. 64

S.R. 1145

N.C.G.S. CONTROL MONUMENT
"SLAGLE"

HANKS
B-20, 1730

ZANE

M-25, 1159
M-25, 1163



PARKER

P-5, 108
Q-22, 1407

EIP (FORMERLY A CHESTNUT OAK)
CORNER 11, DEED BOOK L-5, PAGE
206 & CORNER 10 OF THE SECOND
TRACT, DEED BOOK R-9, PAGE 325

EIP, BEGINNING CORNER
OF THE BOUNDARY LINE AGREEMENT
BETWEEN PARKER & CROCKETT AND
CORNER 8 OF THE BOUNDARY LINE
AGREEMENT BETWEEN ZANE & CROCKETT

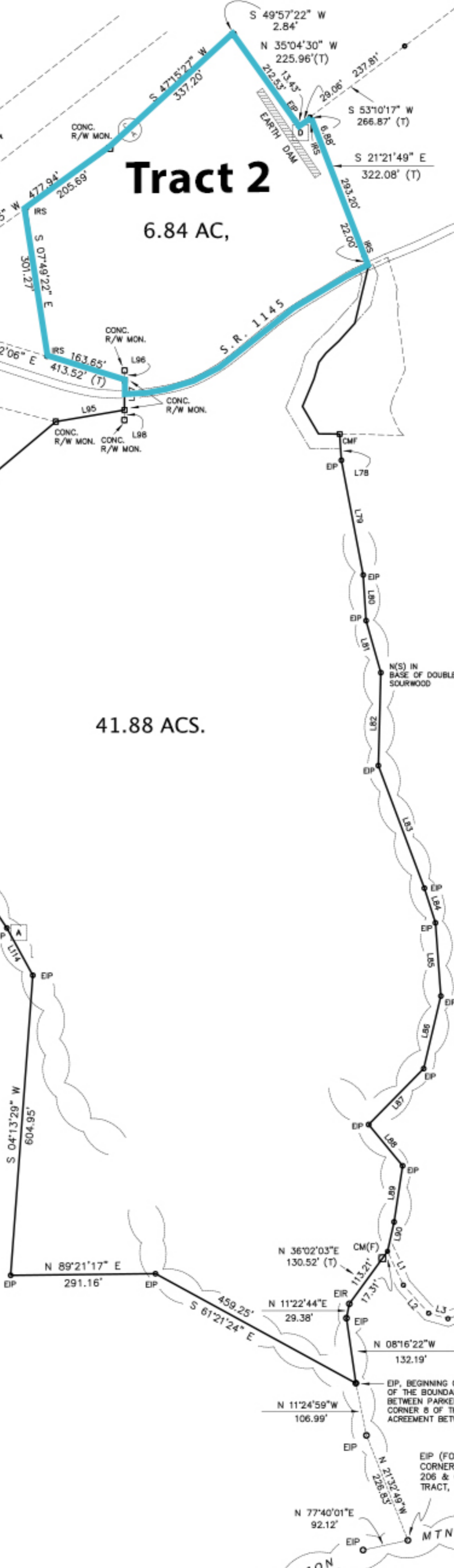
N 36°02'03"E
130.52' (T)

N 11°22'44"E
29.38'

N 08°16'22"W
132.19'

N 11°24'59"W
106.99'

N 77°40'01"E
92.12'



IPS REPLACING
N(F) IN GAP
GAP OF RIDGE

N(S) IN
BASE OF DOUBLE
SOURWOOD

DOBSON

MTN