

RUBICON

SEE PAGE 36

Refer to page 77 for keyed parcels

T.10N.-R.17E.

SEE PAGE 38



© 2022 Rockford Map Publs., Inc.
W2850 W2450

SEE PAGE 16
W2050 W1650

Dodge County, WI
W1250 W850 W450

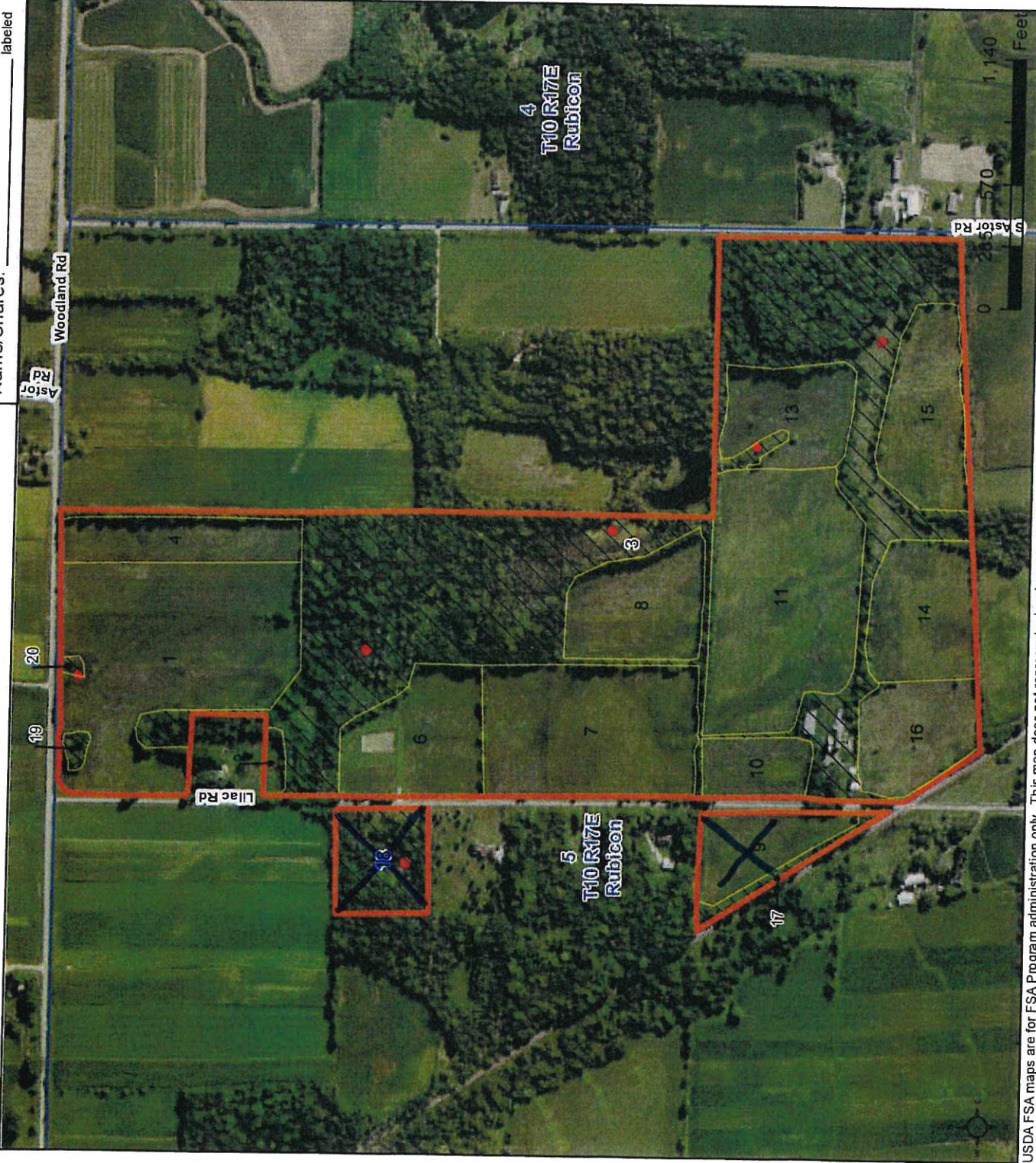
CLU	Acres	HEL	Crop
1	20.39	NHEL	
2	0.64	NHEL	
3	54.48	UHHEL	NC
4	5.21	HEL	
6	7.76	HEL	
7	13.71	HEL	
8	6.9	NHEL	
9	4.25	NHEL	NC/omit
10	3.09	NHEL	
11	17.56	NHEL	
13	5.77	HEL	
14	7.15	NHEL	
15	7.33	HEL	
16	5.87	HEL	
17	1.88	UHHEL	NC-NC/omit
18	4.78	UHHEL	NC-NC/omit
19	10.37	UHHEL	NC
20	10.18	UHHEL	NC

Page Cropland Total: 495.69 acres
101.38

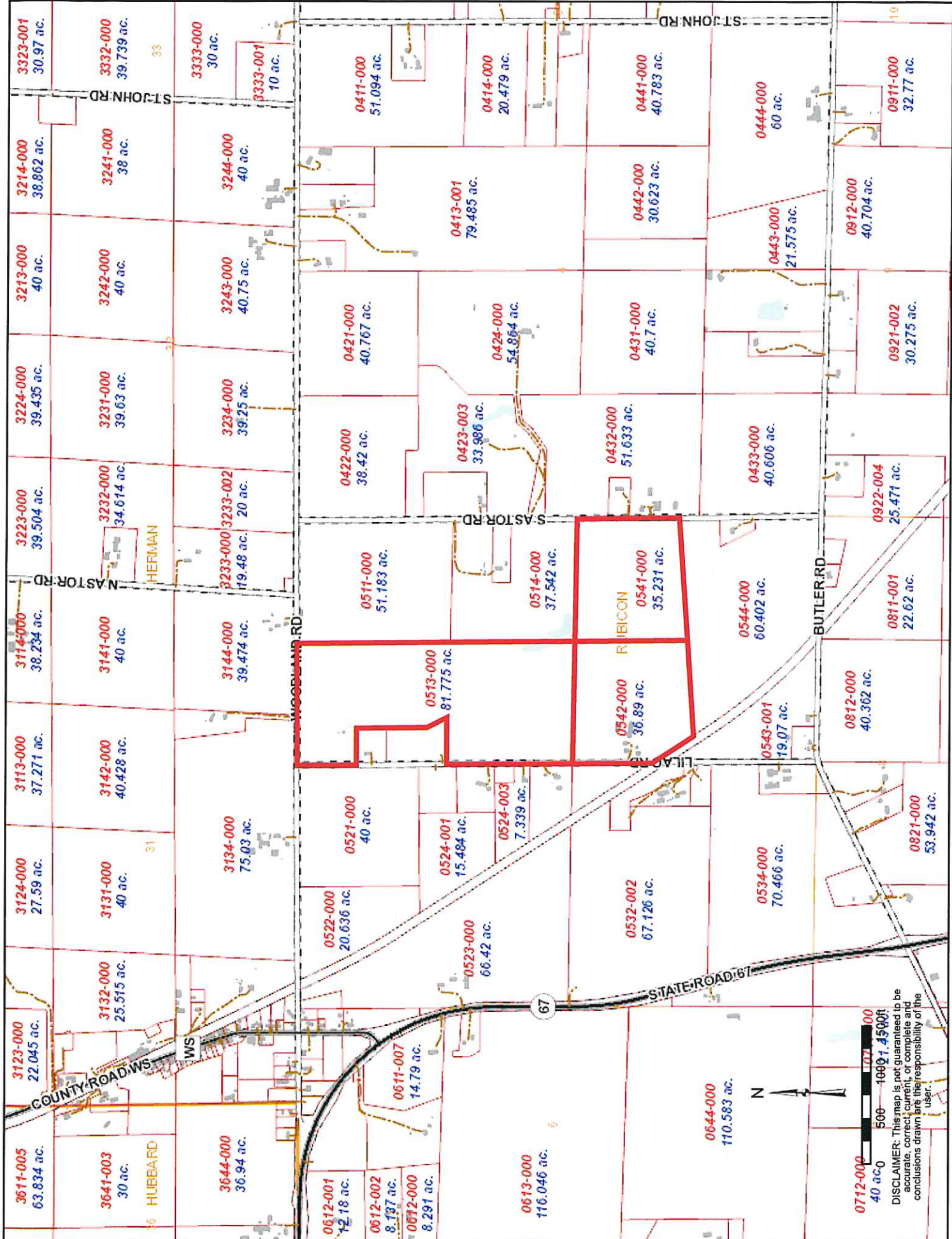
Map Created October 15, 2022

Common Land Unit
cropland_indicator_3CM

- Non-Cropland
- Cropland
- Tract Boundary
- NAIP Imagery 2020
- Wetland Determination Identifiers**
- Restricted Use
- Limited Restrictions
- Exempt from Conservation
- Compliance Provisions



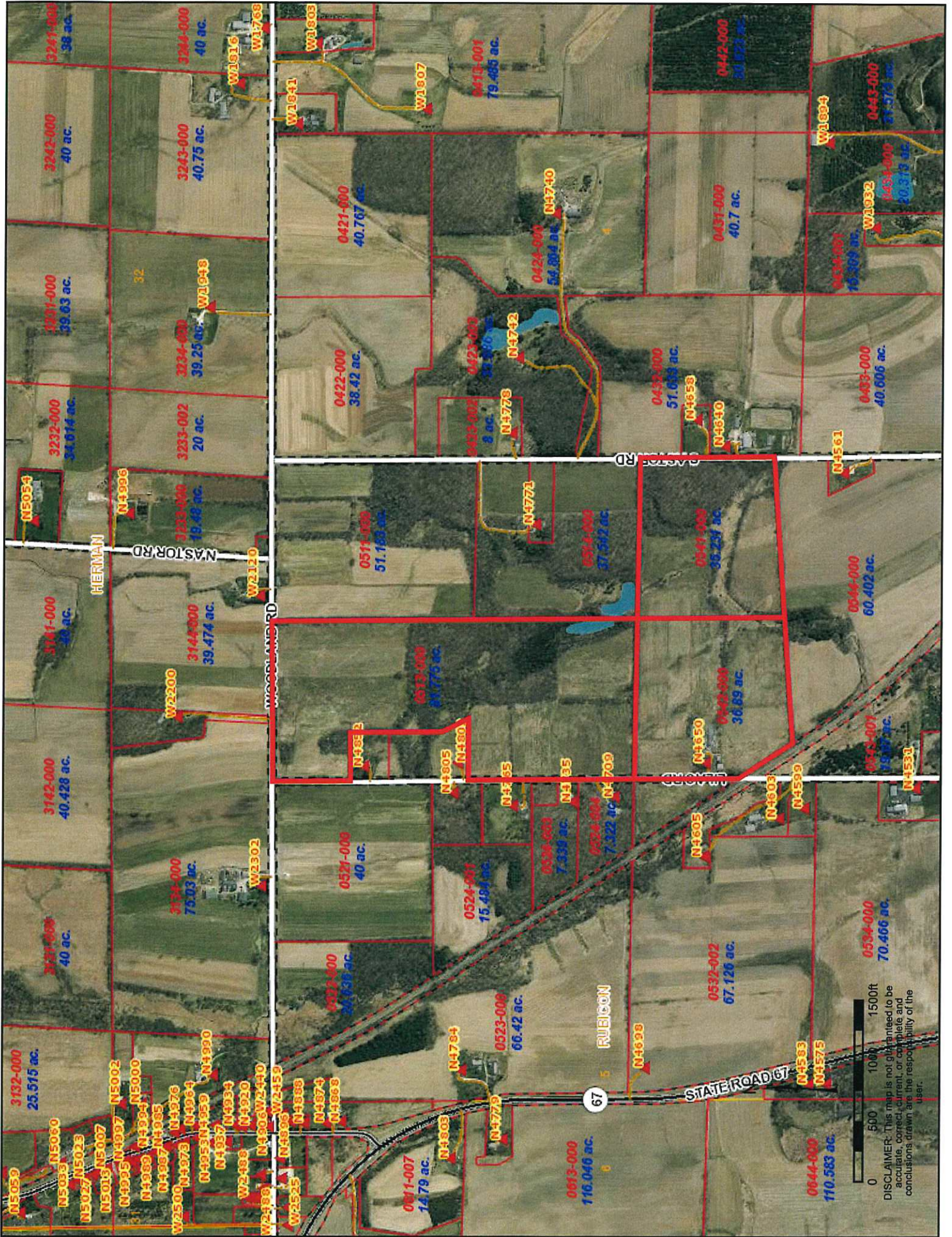
USDA FSA maps are for FSA program administration only. This map does not represent a legal survey or reflect actual ownership; rather it depicts the information provided directly from the producer and/or the NAIP imagery. The producer accepts the data as is and assumes all risks associated with its use. The USDA Farm Service Agency assumes no responsibility for actual or consequential damage incurred as a result of any user's reliance on this data outside FSA Programs. Wetland identifiers do not represent the size, shape, or specific determination of the area. Refer to your original determination (CPA-026 and attached maps) for exact boundaries and determinations or contact NRCS.



0712-000
40 ac

500 1000 1,500'

DISCLAIMER: This map is not guaranteed to be accurate, correct, current, or complete and the conclusions drawn are the responsibility of the user.

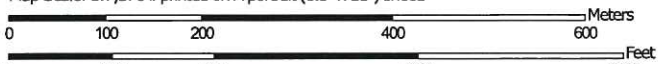


0 500 1000 1500ft
 DISCLAIMER: This map is not guaranteed to be accurate, correct, current, or complete and conclusions drawn are the responsibility of the user.

Soil Map—Dodge County, Wisconsin
(N4650 Lilac Rd, Iron Ridge WI 53035)










Map Scale: 1:7,570 if printed on A portrait (8.5" x 11") sheet.



Map projection: Web Mercator Corner coordinates: WGS84 Edge tics: UTM Zone 16N WGS84

MAP LEGEND

 Area of Interest (AOI)	 Spoil Area
 Soils	 Stony Spot
 Soil Map Unit Polygons	 Very Stony Spot
 Soil Map Unit Lines	 Wet Spot
 Soil Map Unit Points	 Other
 Special Point Features	 Special Line Features
 Blowout	 Streams and Canals
 Borrow Pit	 Transportation
 Clay Spot	 Rails
 Closed Depression	 Interstate Highways
 Gravel Pit	 US Routes
 Gravelly Spot	 Major Roads
 Landfill	 Local Roads
 Lava Flow	 Background
 Marsh or swamp	 Aerial Photography
 Mine or Quarry	
 Miscellaneous Water	
 Perennial Water	
 Rock Outcrop	
 Saline Spot	
 Sandy Spot	
 Severely Eroded Spot	
 Sinkhole	
 Slide or Slip	
 Sodic Spot	

MAP INFORMATION

The soil surveys that comprise your AOI were mapped at 1:15,800.

Warning: Soil Map may not be valid at this scale.
Enlargement of maps beyond the scale of mapping can cause misunderstanding of the detail of mapping and accuracy of soil line placement. The maps do not show the small areas of contrasting soils that could have been shown at a more detailed scale.

Please rely on the bar scale on each map sheet for map measurements.

Source of Map: Natural Resources Conservation Service
Web Soil Survey URL:
Coordinate System: Web Mercator (EPSG:3857)

Maps from the Web Soil Survey are based on the Web Mercator projection, which preserves direction and shape but distorts distance and area. A projection that preserves area, such as the Albers equal-area conic projection, should be used if more accurate calculations of distance or area are required.

This product is generated from the USDA-NRCS certified data as of the version date(s) listed below.

Soil Survey Area: Dodge County, Wisconsin
Survey Area Data: Version 19, Sep 6, 2022

Soil map units are labeled (as space allows) for map scales 1:50,000 or larger.

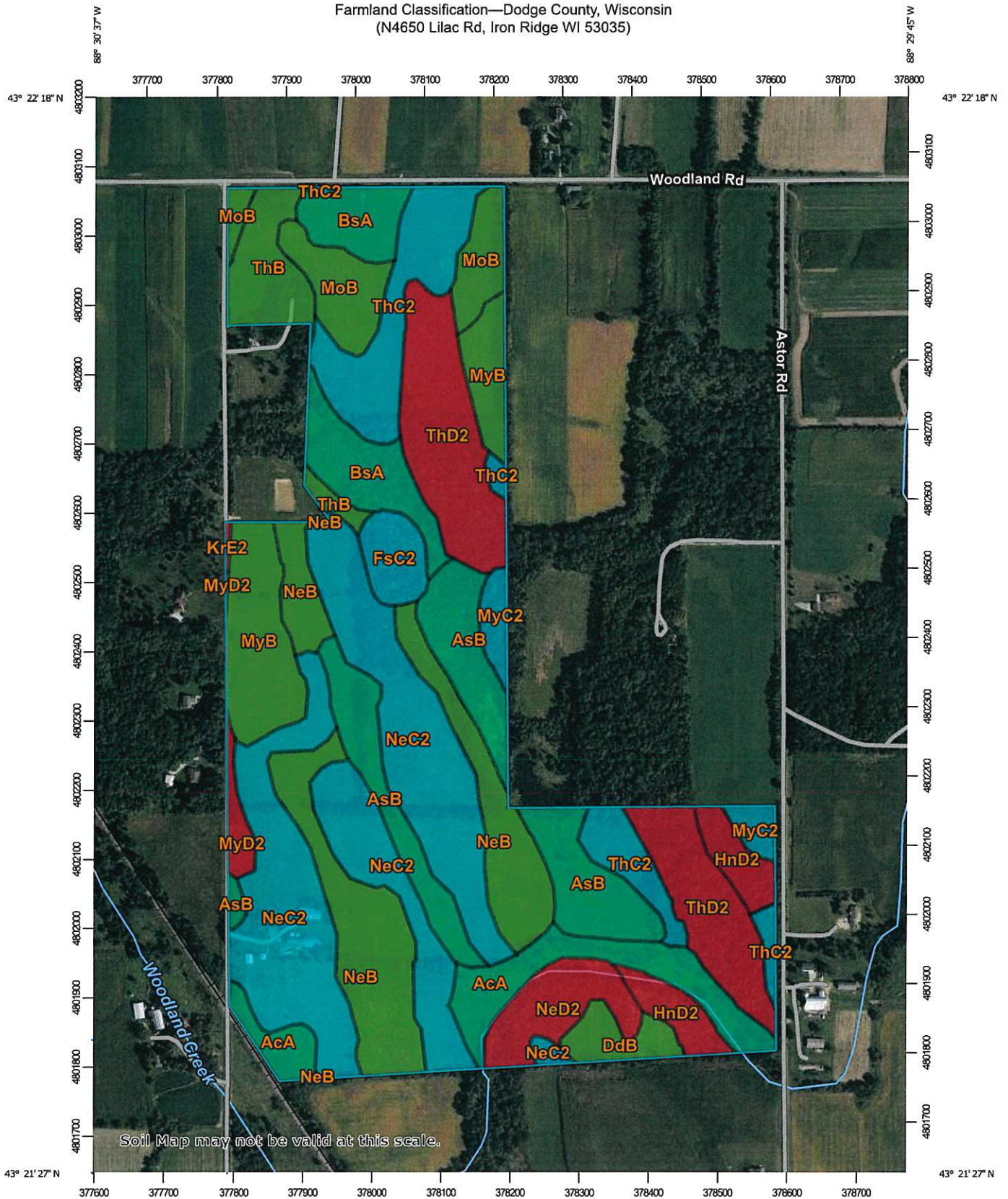
Date(s) aerial images were photographed: May 20, 2020—Sep 15, 2020

The orthophoto or other base map on which the soil lines were compiled and digitized probably differs from the background imagery displayed on these maps. As a result, some minor shifting of map unit boundaries may be evident.

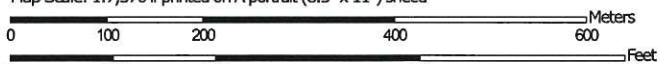
Map Unit Legend

Map Unit Symbol	Map Unit Name	Acres in AOI	Percent of AOI
AcA	Ackmore silt loam, 0 to 3 percent slopes	8.5	5.5%
AsB	Ashippun silt loam, 2 to 6 percent slopes	15.6	10.1%
BsA	Brookston silt loam, 0 to 2 percent slopes	8.3	5.4%
DdB	Dodge silt loam, 2 to 6 percent slopes	2.4	1.6%
FsC2	Fox silt loam, 6 to 12 percent slopes, eroded	2.7	1.7%
HnD2	Hochheim silt loam, 12 to 20 percent slopes, eroded	4.3	2.8%
KrE2	Kidder loam, 20 to 30 percent slopes, eroded	0.1	0.1%
MoB	Mayville silt loam, 2 to 6 percent slopes	7.2	4.7%
MyB	Miami silt loam, 2 to 6 percent slopes	9.6	6.2%
MyC2	Miami silt loam, 6 to 12 percent slopes, eroded	2.4	1.5%
MyD2	Miami silt loam, 12 to 18 percent slopes, eroded	1.2	0.8%
NeB	Neda silt loam, 2 to 6 percent slopes	18.4	12.0%
NeC2	Neda silt loam, 6 to 12 percent slopes, eroded	35.0	22.7%
NeD2	Neda silt loam, 12 to 18 percent slopes, eroded	4.8	3.1%
ThB	Theresa silt loam, 2 to 6 percent slopes	5.2	3.4%
ThC2	Theresa silt loam, 6 to 12 percent slopes, eroded	12.0	7.8%
ThD2	Theresa silt loam, 12 to 20 percent slopes, eroded	16.5	10.7%
Totals for Area of Interest		154.1	100.0%

Farmland Classification—Dodge County, Wisconsin
(N4650 Lilac Rd, Iron Ridge WI 53035)



Map Scale: 1:7,570 if printed on A portrait (8.5" x 11") sheet.



Map projection: Web Mercator Corner coordinates: WGS84 Edge tics: UTM Zone 16N WGS84

Area of Interest (AOI)		Soils		Soil Rating Polygons		Soil Rating Lines	
	Area of Interest (AOI)		Prime farmland if irrigated and reclaimed of excess salts and sodium		Farmland of statewide importance, if drained and either protected from flooding or not frequently flooded during the growing season		Farmland of unique importance
	Not prime farmland		Prime farmland if irrigated and the product of I (soil erodibility) x C (climate factor) does not exceed 60		Farmland of statewide importance, if irrigated and drained		Not rated or not available
	All areas are prime farmland		Prime farmland if irrigated and reclaimed of excess salts and sodium		Farmland of statewide importance, if irrigated and either protected from flooding or not frequently flooded during the growing season		Not prime farmland
	Prime farmland if drained		Farmland of statewide importance		Farmland of statewide importance, if subsoiled, completely removing the root inhibiting soil layer		All areas are prime farmland
	Prime farmland if protected from flooding or not frequently flooded during the growing season		Farmland of statewide importance, if drained		Farmland of statewide importance, if protected from flooding or not frequently flooded during the growing season		Prime farmland if drained
	Prime farmland if irrigated		Farmland of statewide importance, if irrigated		Farmland of statewide importance, if subsoiled, completely removing the root inhibiting soil layer		Prime farmland if protected from flooding or not frequently flooded during the growing season
	Prime farmland if drained and either protected from flooding or not frequently flooded during the growing season		Farmland of statewide importance, if irrigated		Farmland of statewide importance, if irrigated and the product of I (soil erodibility) x C (climate factor) does not exceed 60		Prime farmland if irrigated
	Prime farmland if irrigated and drained		Farmland of statewide importance, if irrigated		Farmland of statewide importance, if irrigated		Prime farmland if drained and either protected from flooding or not frequently flooded during the growing season
	Prime farmland if irrigated and either protected from flooding or not frequently flooded during the growing season		Farmland of local importance, if irrigated		Farmland of local importance		Prime farmland if irrigated and either protected from flooding or not frequently flooded during the growing season

Farmland Classification—Dodge County, Wisconsin
(N4650 Lilac Rd, Iron Ridge WI 53035)

Prime farmland if subsoiled, completely removing the root inhibiting soil layer	Farmland of statewide importance, if drained and either protected from flooding or not frequently flooded during the growing season	Farmland of statewide importance, if irrigated and reclaimed of excess salts and sodium	Farmland of unique importance	Prime farmland if subsoiled, completely removing the root inhibiting soil layer
				Prime farmland if subsoiled, completely removing the root inhibiting soil layer
Prime farmland if irrigated and the product of I (soil erodibility) x C (climate factor) does not exceed 60	Farmland of statewide importance, if irrigated and drained	Farmland of statewide importance, if either protected from flooding or not frequently flooded during the growing season	Not rated or not available	Prime farmland if irrigated and the product of I (soil erodibility) x C (climate factor) does not exceed 60
Prime farmland if irrigated and reclaimed of excess salts and sodium	Farmland of statewide importance, if warm enough, and either drained or either protected from flooding or not frequently flooded during the growing season	Farmland of statewide importance, if warm enough, and either drained or either protected from flooding or not frequently flooded during the growing season	Not prime farmland	Prime farmland if irrigated and reclaimed of excess salts and sodium
Farmland of statewide importance	Farmland of statewide importance, if subsoiled, completely removing the root inhibiting soil layer	Farmland of statewide importance, if warm enough, and either drained or either protected from flooding or not frequently flooded during the growing season	All areas are prime farmland	Farmland of statewide importance
Farmland of statewide importance, if drained	Farmland of statewide importance, if irrigated and the product of I (soil erodibility) x C (climate factor) does not exceed 60	Farmland of local importance	Prime farmland if drained	Farmland of statewide importance, if drained
Farmland of statewide importance, if protected from flooding or not frequently flooded during the growing season			Prime farmland if protected from flooding or not frequently flooded during the growing season	Farmland of statewide importance, if protected from flooding or not frequently flooded during the growing season
Farmland of statewide importance, if irrigated			Prime farmland if irrigated and drained	Farmland of statewide importance, if irrigated
Farmland of statewide importance, if irrigated			Prime farmland if irrigated and drained	Farmland of statewide importance, if irrigated

Farmland Classification—Dodge County, Wisconsin
(N4650 Lilac Rd, Iron Ridge WI 53035)

The soil surveys that comprise your AOI were mapped at 1:15,800.

Warning: Soil Map may not be valid at this scale.
Enlargement of maps beyond the scale of mapping can cause misunderstanding of the detail of mapping and accuracy of soil line placement. The maps do not show the small areas of contrasting soils that could have been shown at a more detailed scale.

Please rely on the bar scale on each map sheet for map measurements.

Source of Map: Natural Resources Conservation Service
Web Soil Survey URL:
Coordinate System: Web Mercator (EPSG:3857)

Maps from the Web Soil Survey are based on the Web Mercator projection, which preserves direction and shape but distorts distance and area. A projection that preserves area, such as the Albers equal-area conic projection, should be used if more accurate calculations of distance or area are required.

This product is generated from the USDA-NRCS certified data as of the version date(s) listed below.

Soil Survey Area: Dodge County, Wisconsin
Survey Area Data: Version 19, Sep 6, 2022

Soil map units are labeled (as space allows) for map scales 1:50,000 or larger.

Date(s) aerial images were photographed: May 20, 2020—Sep 15, 2020

The orthophoto or other base map on which the soil lines were compiled and digitized probably differs from the background imagery displayed on these maps. As a result, some minor shifting of map unit boundaries may be evident.

	Farmland of statewide importance, if drained and either protected from flooding or not frequently flooded during the growing season		Farmland of statewide importance, if irrigated and reclaimed of excess salts and sodium		Farmland of unique importance
	Farmland of statewide importance, if irrigated and drained		Farmland of statewide importance, if drained or flooded during the growing season		Not rated or not available
	Farmland of statewide importance, if irrigated and either protected from flooding or not frequently flooded during the growing season		Farmland of statewide importance, if warm enough, and either drained or either protected from flooding or not frequently flooded during the growing season		Water Features
	Farmland of statewide importance, if subsoiled, completely removing the root-inhibiting soil layer		Farmland of statewide importance, if warm enough		Streams and Canals
	Farmland of statewide importance, if irrigated and the product of I (soil erodibility) x C (climate factor) does not exceed 60		Farmland of statewide importance, if thawed		Transportation
			Farmland of local importance		Rails
			Farmland of local importance, if irrigated		Interstate Highways
					US Routes
					Major Roads
					Local Roads
					Background
					Aerial Photography

Farmland Classification

Map unit symbol	Map unit name	Rating	Acres in AOI	Percent of AOI
AcA	Ackmore silt loam, 0 to 3 percent slopes	Prime farmland if drained	8.5	5.5%
AsB	Ashippun silt loam, 2 to 6 percent slopes	Prime farmland if drained	15.6	10.1%
BsA	Brookston silt loam, 0 to 2 percent slopes	Prime farmland if drained	8.3	5.4%
DdB	Dodge silt loam, 2 to 6 percent slopes	All areas are prime farmland	2.4	1.6%
FsC2	Fox silt loam, 6 to 12 percent slopes, eroded	Farmland of statewide importance	2.7	1.7%
HnD2	Hochheim silt loam, 12 to 20 percent slopes, eroded	Not prime farmland	4.3	2.8%
KrE2	Kidder loam, 20 to 30 percent slopes, eroded	Not prime farmland	0.1	0.1%
MoB	Mayville silt loam, 2 to 6 percent slopes	All areas are prime farmland	7.2	4.7%
MyB	Miami silt loam, 2 to 6 percent slopes	All areas are prime farmland	9.6	6.2%
MyC2	Miami silt loam, 6 to 12 percent slopes, eroded	Farmland of statewide importance	2.4	1.5%
MyD2	Miami silt loam, 12 to 18 percent slopes, eroded	Not prime farmland	1.2	0.8%
NeB	Neda silt loam, 2 to 6 percent slopes	All areas are prime farmland	18.4	12.0%
NeC2	Neda silt loam, 6 to 12 percent slopes, eroded	Farmland of statewide importance	35.0	22.7%
NeD2	Neda silt loam, 12 to 18 percent slopes, eroded	Not prime farmland	4.8	3.1%
ThB	Theresa silt loam, 2 to 6 percent slopes	All areas are prime farmland	5.2	3.4%
ThC2	Theresa silt loam, 6 to 12 percent slopes, eroded	Farmland of statewide importance	12.0	7.8%
ThD2	Theresa silt loam, 12 to 20 percent slopes, eroded	Not prime farmland	16.5	10.7%
Totals for Area of Interest			154.1	100.0%

Description

Farmland classification identifies map units as prime farmland, farmland of statewide importance, farmland of local importance, or unique farmland. It identifies the location and extent of the soils that are best suited to food, feed, fiber, forage, and oilseed crops. NRCS policy and procedures on prime and unique farmlands are published in the "Federal Register," Vol. 43, No. 21, January 31, 1978.

Rating Options

Aggregation Method: No Aggregation Necessary

Tie-break Rule: Lower