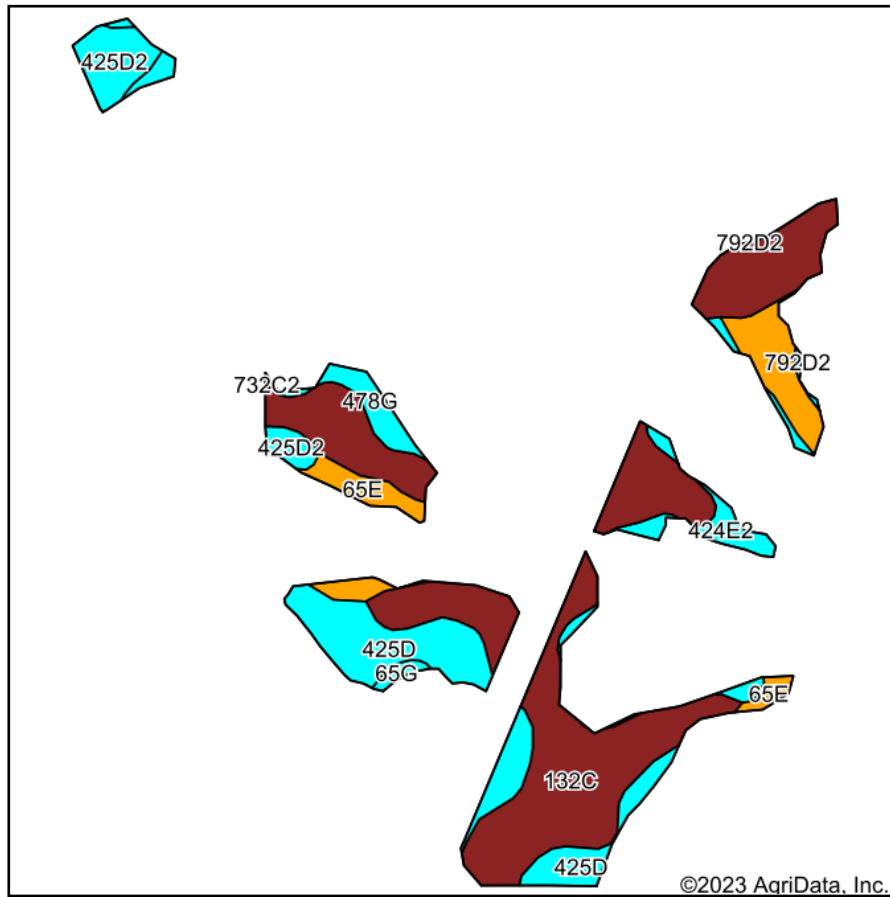
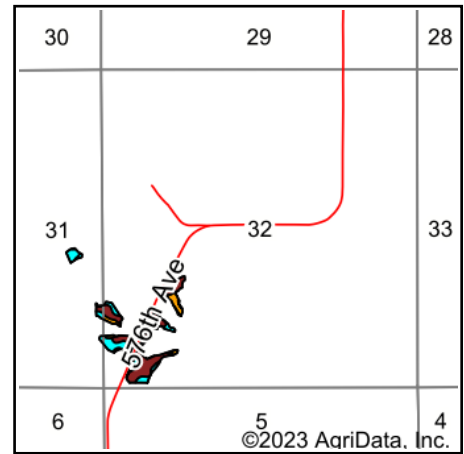


# Soils Map



Soils data provided by USDA and NRCS.



State: **Iowa**  
 County: **Monroe**  
 Location: **32-73N-18W**  
 Township: **Union**  
 Acres: **15.3**  
 Date: **3/27/2023**

**Hawkeye Farm Mgmt & Real Estate**



22 N Main, Albion IA Phone: 641-932-7796  
 Email: [hawkeye@uciowa.com](mailto:hawkeye@uciowa.com)  
 On the web: [www.uciowa.com](http://www.uciowa.com)  
[www.iowawhitetailfarms.com](http://www.iowawhitetailfarms.com)

Maps Provided By:



Area Symbol: IA135, Soil Area Version: 30

Code	Soil Description	Acres	Percent of field	CSR2 Legend	Non-Irr Class *c	CSR2**	CSR	*n NCCPI Soybeans
132C	Weller silt loam, 5 to 9 percent slopes	8.47	55.4%		IIIe	59	44	73
425D	Keswick loam, 9 to 14 percent slopes	2.73	17.8%		IVe	8	16	44
425D2	Keswick loam, 9 to 14 percent slopes, moderately eroded	0.93	6.1%		IVe	9	12	36
731D2	Pershing silty clay loam, 9 to 14 percent slopes, moderately eroded	0.88	5.8%		IVe	38	31	53
65E	Lindley loam, 14 to 18 percent slopes	0.79	5.2%		VIe	33	30	60
424E2	Lindley-Keswick loams, 14 to 18 percent slopes, moderately eroded	0.77	5.0%		VIe	24	5	45
478G	Munterville-Rock outcrop complex, 14 to 40 percent slopes	0.62	4.1%		VIIe	5	5	6
65G	Lindley loam, 18 to 40 percent slopes	0.11	0.7%		VIIe	6	5	12
Weighted Average						3.79	40	31.8
								*n 59.2

\*\*IA has updated the CSR values for each county to CSR2.

\*n: The aggregation method is "Weighted Average using all components"

\*c: Using Capabilities Class Dominant Condition Aggregation Method

Soils data provided by USDA and NRCS.