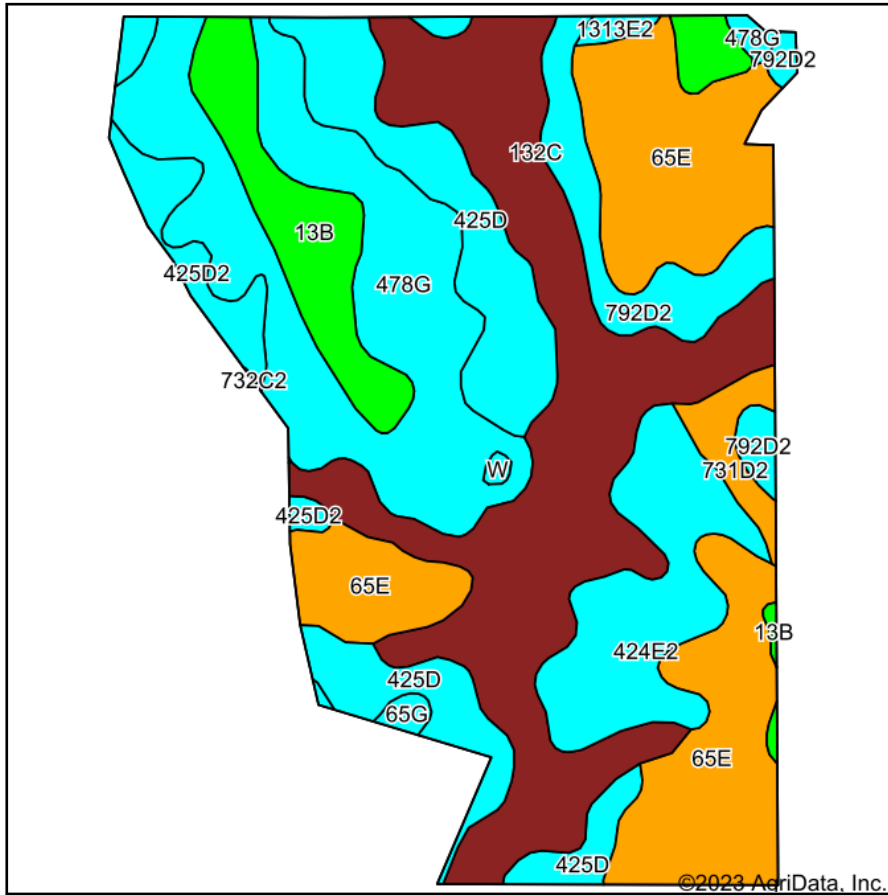
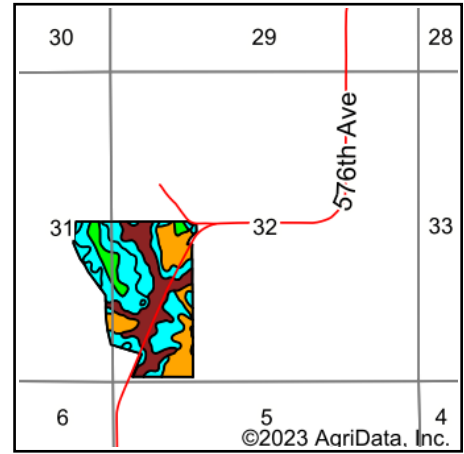


# Soils Map



Soils data provided by USDA and NRCS.



State: **Iowa**  
 County: **Monroe**  
 Location: **32-73N-18W**  
 Township: **Union**  
 Acres: **95.8**  
 Date: **3/27/2023**

**Hawkeye Farm Mgmt & Real Estate**



22 N Main, Albion IA Phone: 641-932-7796  
 Email: hawkeye@uciowa.com  
 On the web: www.uciowa.com;  
 www.iowawhitetailfarms.com

Maps Provided By:



© AgriData, Inc. 2023

www.AgriDataInc.com



Area Symbol: IA135, Soil Area Version: 30

Code	Soil Description	Acres	Percent of field	CSR2 Legend	Non-Irr Class *c	CSR2**	CSR	*n NCCPI Soybeans
132C	Weller silt loam, 5 to 9 percent slopes	23.79	24.8%		IIle	59	44	73
65E	Lindley loam, 14 to 18 percent slopes	19.18	20.0%		VIle	33	30	60
478G	Munterville-Rock outcrop complex, 14 to 40 percent slopes	17.11	17.9%		VIIle	5	5	6
425D	Keswick loam, 9 to 14 percent slopes	11.11	11.6%		IVle	8	16	44
424E2	Lindley-Keswick loams, 14 to 18 percent slopes, moderately eroded	7.76	8.1%		VIle	24	5	45
13B	Olmitz-Colo-Vesser complex, 2 to 5 percent slopes	6.72	7.0%		IIlw	82	60	71
792D2	Armstrong loam, 9 to 14 percent slopes, moderately eroded	4.90	5.1%		IVle	9	13	43
425D2	Keswick loam, 9 to 14 percent slopes, moderately eroded	2.81	2.9%		IVle	9	12	36
731D2	Pershing silty clay loam, 9 to 14 percent slopes, moderately eroded	1.53	1.6%		IVle	38	31	53
65G	Lindley loam, 18 to 40 percent slopes	0.39	0.4%		VIIle	6	5	12
1313E2	Munterville silt loam, 14 to 18 percent slopes, moderately eroded	0.35	0.4%		VIle	22	5	39
W	Water	0.15	0.2%			0	0	
Weighted Average						*-	32.2	25.8
								*n 49.2

\*\*IA has updated the CSR values for each county to CSR2.

\*n: The aggregation method is "Weighted Average using all components"

\*c: Using Capabilities Class Dominant Condition Aggregation Method

\*- Non Irr Class weighted average cannot be calculated on the current soils data due to missing data.

Soils data provided by USDA and NRCS.