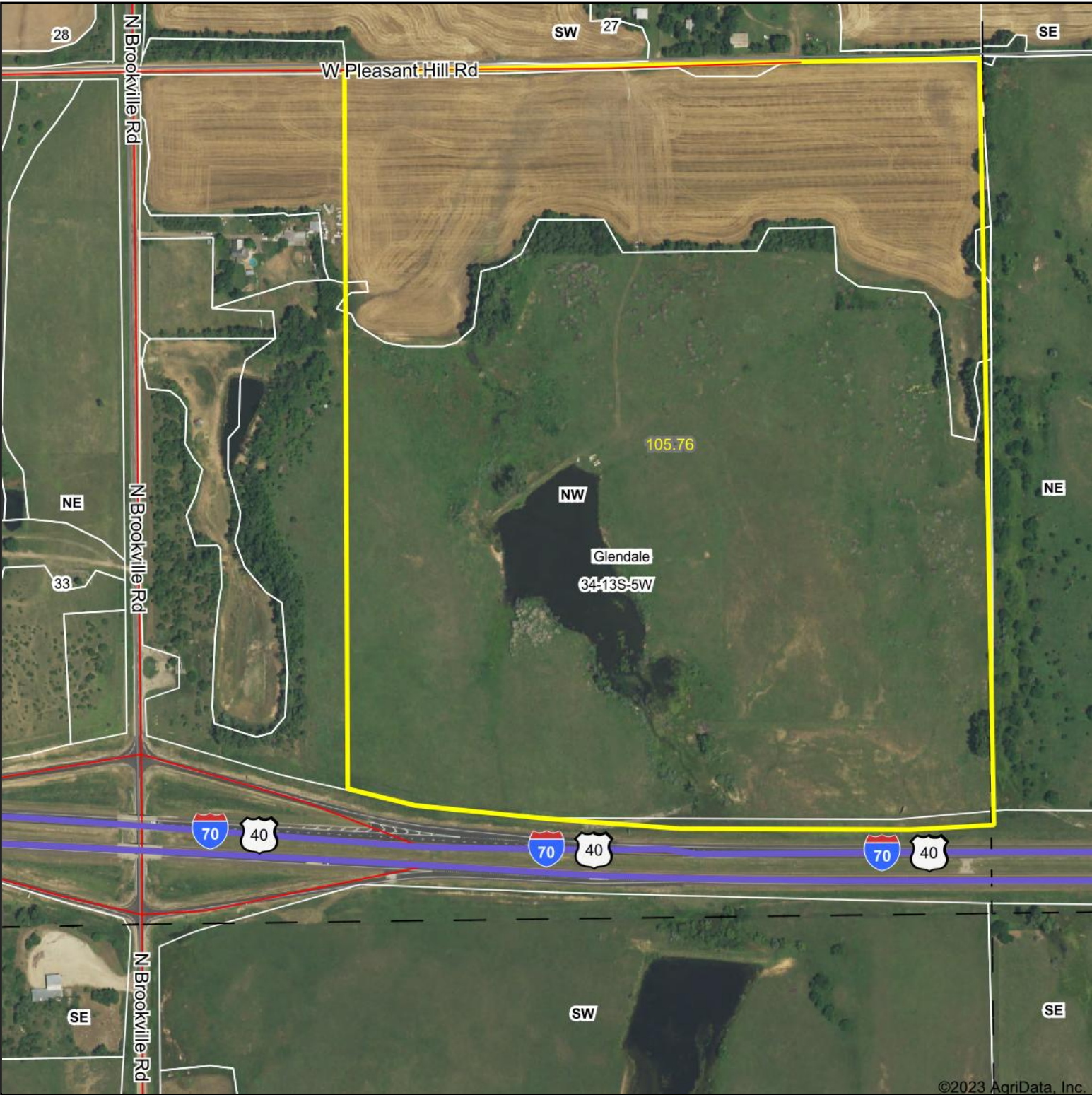



Aerial Map



©2023 AgriData, Inc.




COLDWELL BANKER
APW REALTORS®

Map Center: 38° 52' 52.98, -97° 52' 6.94


34-13S-5W
Saline County
Kansas

0ft 481ft 962ft



3/31/2023

Maps Provided By:



surety®
CUSTOMIZED ONLINE MAPPING

© AgriData, Inc. 2023 www.AgriDataInc.com

Field borders provided by Farm Service Agency as of 5/21/2008.