

NEW LISTING

# Fairfield Land

75.41 acres in Fairfield, Utah County, Utah

See more information at [www.hciutah.com](http://www.hciutah.com)



## EXECUTIVE SUMMARY:

**List Price: \$2,500,000**

**Mike Nelson | Amy Fromm**

**801-482-7565 | [mike@hciutah.com](mailto:mike@hciutah.com)**

Notice: This information is believed to be accurate, but no warranty is expressed or implied. Highland Commercial insists that interested parties conduct their own research and investigations. The property is offered subject to prior sale, price change, and withdrawal without notice. No obligations will be created unless a purchase contract is signed by both buyer and seller. We welcome the cooperation of participating brokers; please contact us for our commission-sharing policies. All images and materials are copyright protected and are the property of Highland Commercial.

- 75.41 acres located in Fairfield, Utah County, Utah
- Zoned Light Industrial in Utah County
- Utah County parcels #59:065:0070 & 59:065:0067
- 2022 taxes: \$13.03 (Greenbelt)
- No water owned by seller
- 20 miles west of I-15 in Lehi, Utah
- 21 miles southeast of Tooele, Utah
- 22 miles west of Provo, Utah
- 45 miles southwest of Salt Lake City, Utah



Highland Commercial, Inc.

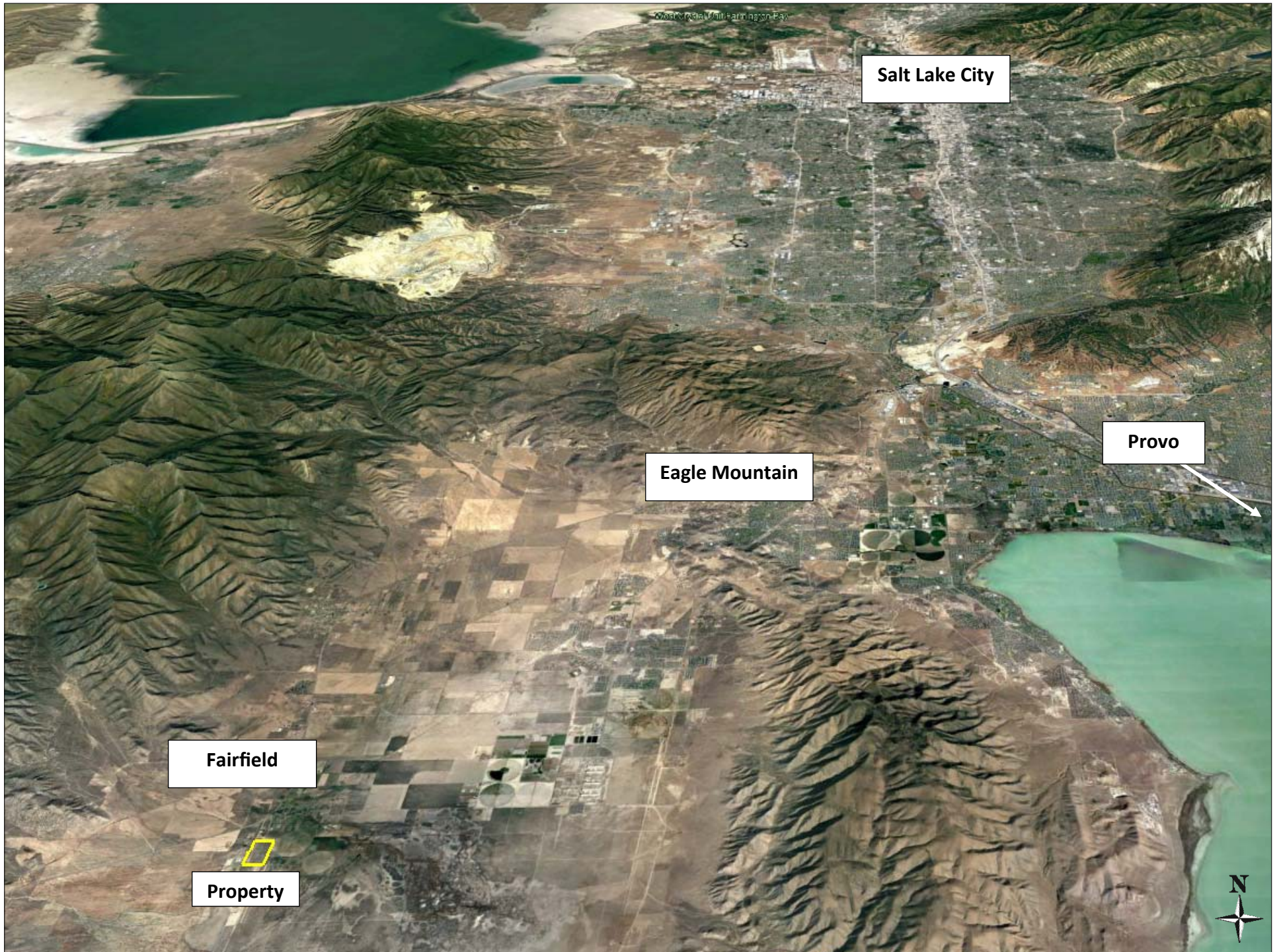
2733 East Parley's Way, Suite 208

Salt Lake City, UT 84109

801-487-6100

[www.hciutah.com](http://www.hciutah.com)





West Valley Mill Farmington Bay

Salt Lake City

Eagle Mountain

Provo

Fairfield

Property





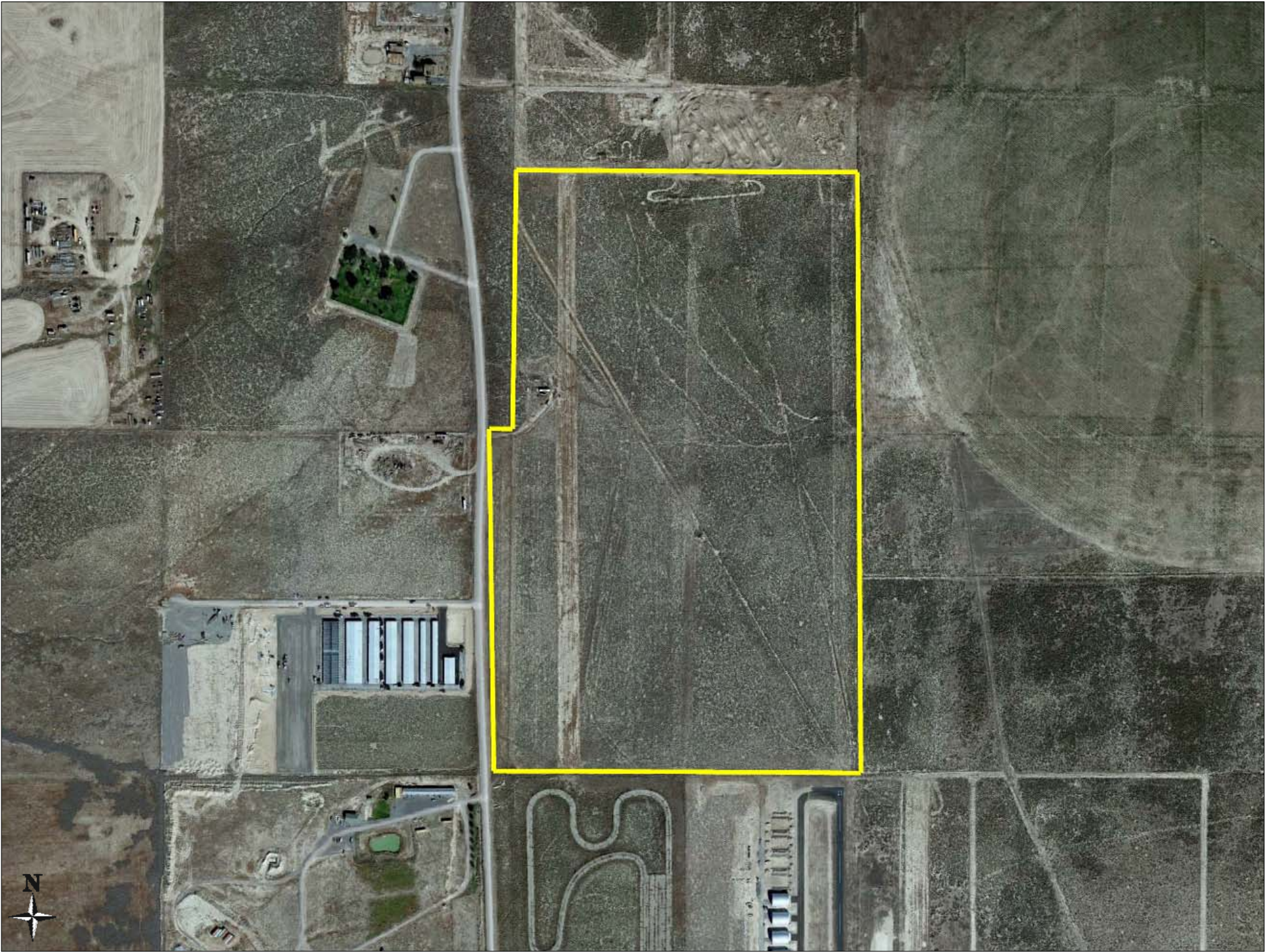




Fairfield







## Legend

	Commercial Overlay		Park		A/R-10
	Heavy Industrial		A/R-1		A/R-40
	Light Industrial		A/R-5		Air Park

**A/R-10**

**Commercial  
Overlay**

**A/R-5**

**A/R-1**

**A-40**

Property

**Air  
Park**

**A-40**

**Light  
Industrial  
West**

**A-40**