



Tract #1 / 20.38 Acres

Deeded 60' Right-Of-Way

Access from

Plum Tree Drive

\$285,320 (\$14,000/Acre)

Portion of York County

TM# 5040000048

Tract #2 / 7.83 Acres

Deeded 50' Right-Of-Way

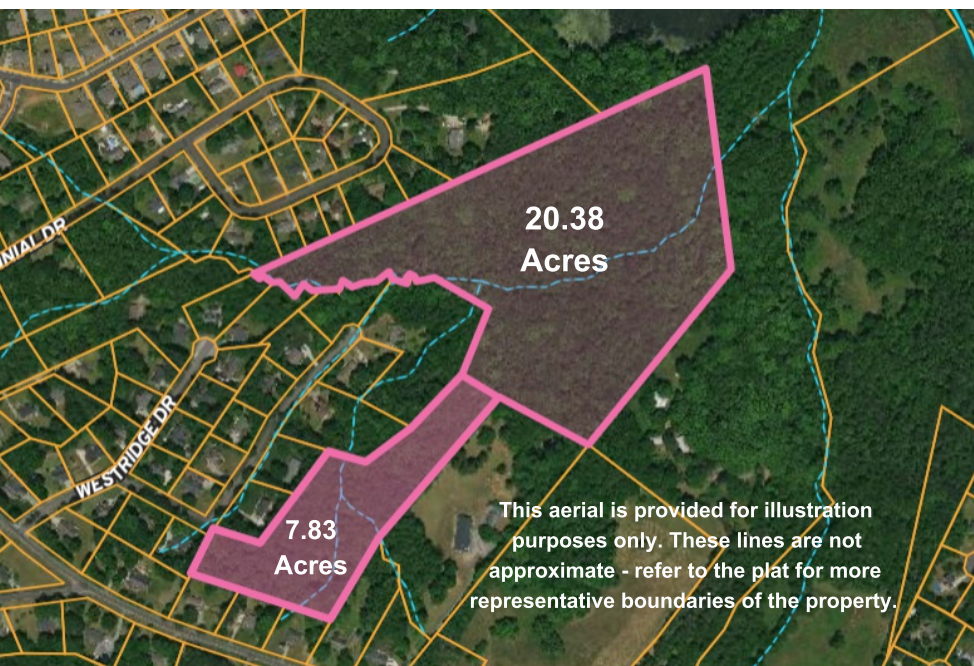
Access from

Longfield Road

\$195,750 (\$25,000/Acre)

Portion of York County

TM# 5040000048



Russ Brown

Land Broker



Tel: (803) 718-0911

Email: russ@brownandcomp.com

www.BrownComp.com




BROWN & Co.
 LAND BROKERS