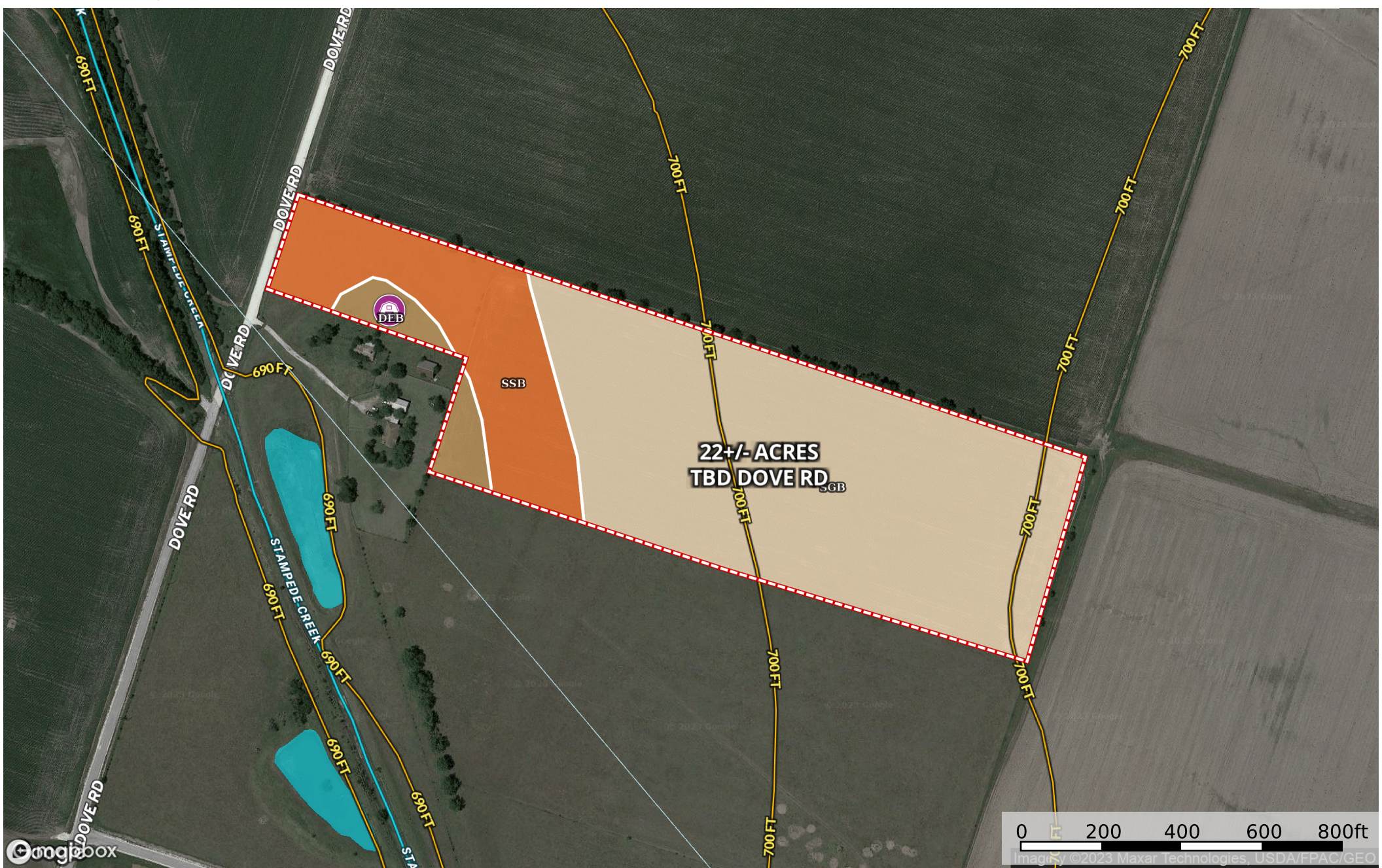


Marrs - TBD Dove Rd 22+/- Acres  
McLennan County, Texas, 22 AC +/-



- Gate
- Barn
- Boundary
- Stream, Intermittent
- River/Creek
- Water Body



The information contained herein was obtained from sources deemed to be reliable. MapRight Services makes no warranties or guarantees as to the completeness or accuracy thereof.



## Boundary 22.4 ac

SOIL CODE	SOIL DESCRIPTION	ACRES	%	CPI	NCCPI	CAP
SgB	Sanger clay, 1 to 3 percent slopes	16.2	72.32	0	43	3e
SsB	Slidell silty clay, 0 to 2 percent slopes	5.03	22.46	0	42	3e
DeB	Denton silty clay, 1 to 3 percent slopes	1.17	5.22	0	43	3e
TOTALS		22.4(*)	100%	-	42.78	3.0

(\*) Total acres may differ in the second decimal compared to the sum of each acreage soil. This is due to a round error because we only show the acres of each soil with two decimal.

### Capability Legend

Increased Limitations and Hazards

Decreased Adaptability and Freedom of Choice Users

Land, Capability

	1	2	3	4	5	6	7	8
'Wild Life'	•	•	•	•	•	•	•	•
Forestry	•	•	•	•	•	•	•	
Limited	•	•	•	•	•	•	•	
Moderate	•	•	•	•	•	•		
Intense	•	•	•	•	•			
Limited	•	•	•	•				
Moderate	•	•	•					
Intense	•	•						
Very Intense	•							

### Grazing Cultivation

(c) climatic limitations (e) susceptibility to erosion

(s) soil limitations within the rooting zone (w) excess of water