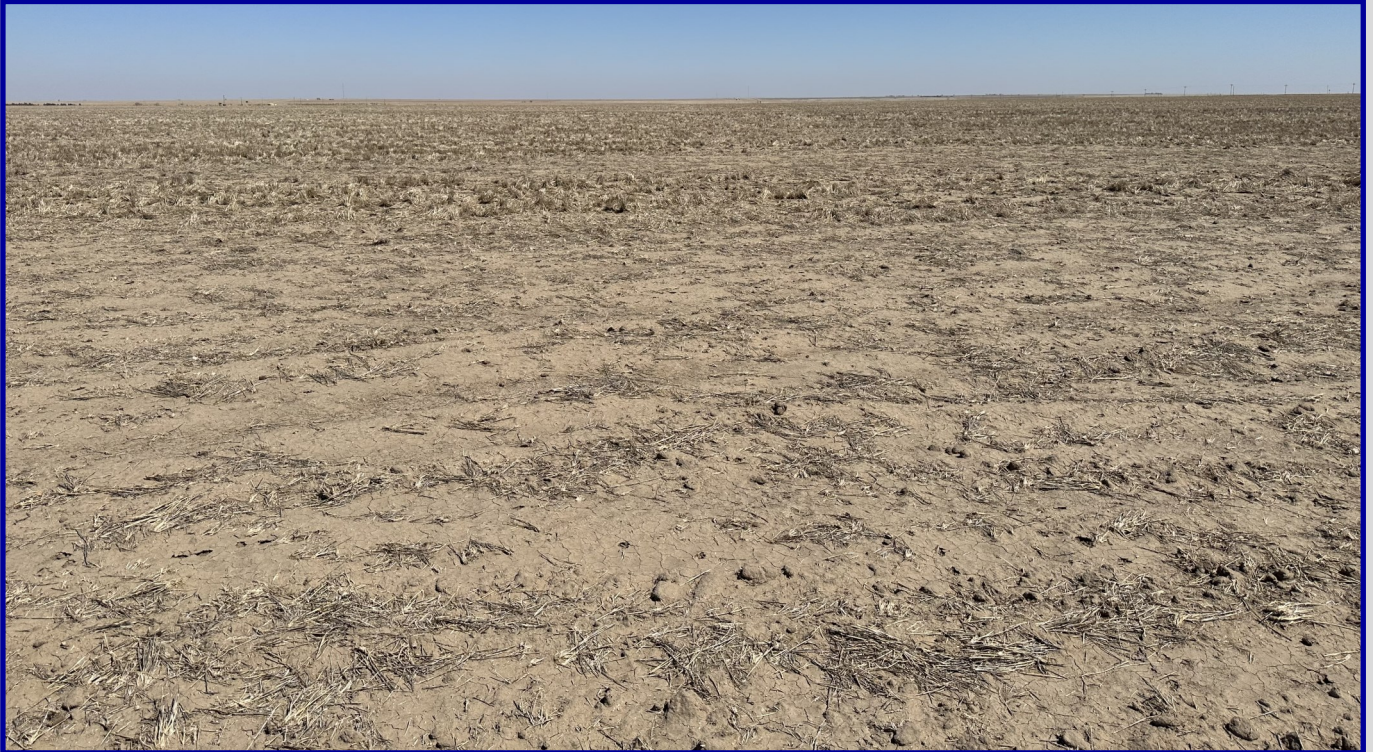


# 370 Acres of Dry Land

West 370 Acres 23-24-38

Kearny County, Kansas



# HUTCHESON

Real Estate & Auction

(620) 355-7991

[www.hutchreal.com](http://www.hutchreal.com)





# 370 Acres of Dry Land

West 370 Acres 23-24-38

Kearny County, Kansas

## Legal Description

The West 370 acres of Section Twenty-three (23), Township Twenty-four (24) South, Range Thirty-eight (38) West of the Sixth P.M., Kearny County, Kansas.

## Description of the land

This tract consists of a total of 370 acres of dry land.

## Minerals

This tract is selling with the surface rights only.

## Possession

Buyer shall get immediate possession upon closing.

## Location

This tract is located 10.5 miles West of Lakin.

## Real Estate Taxes

2022 Real Estate Taxes \$1,320.31

## Asking Price

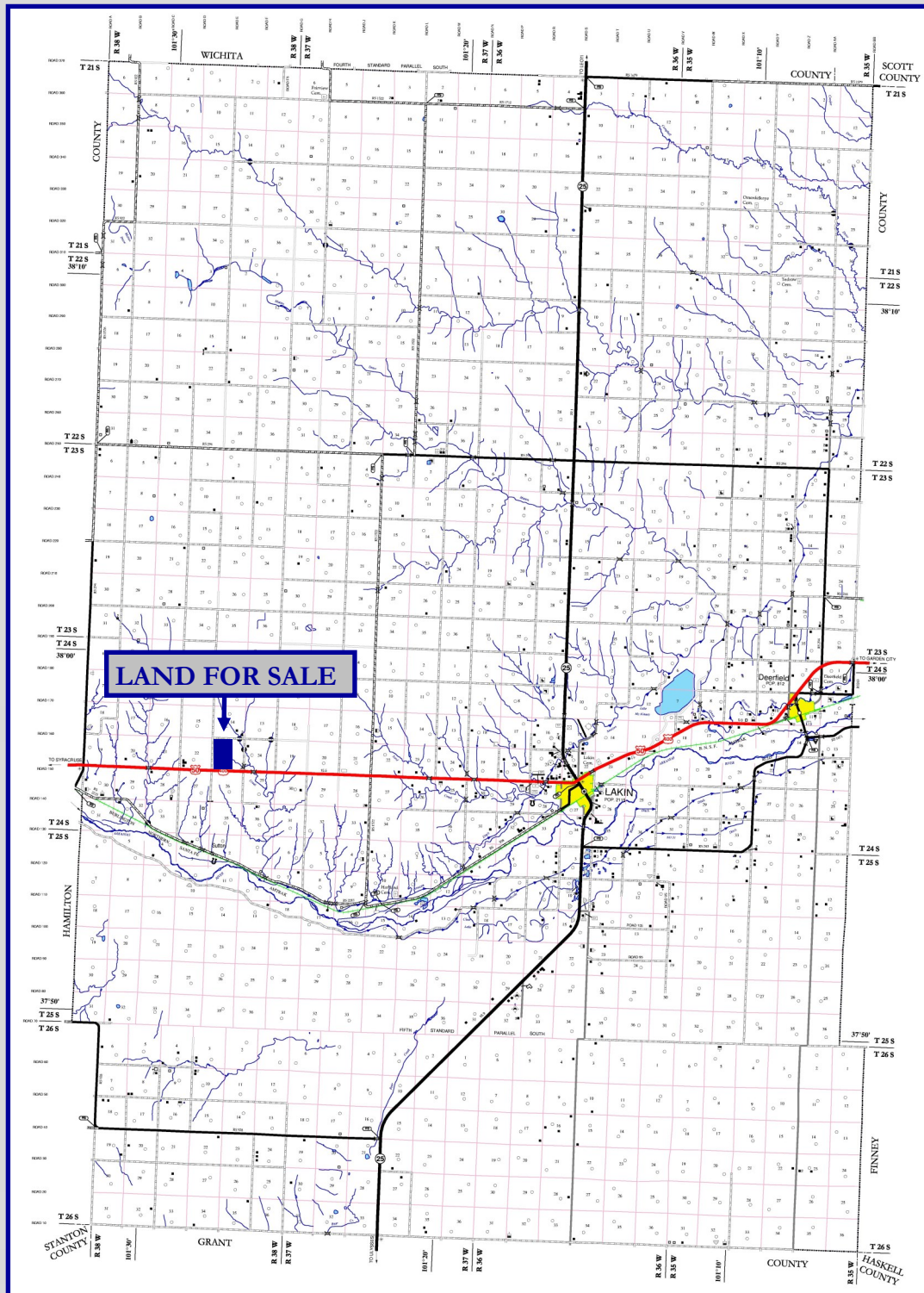
\$1,110,000 or \$3,000 Per Acre



# 370 Acres of Dry Land

West 370 Acres 23-24-38

Kearny County, Kansas



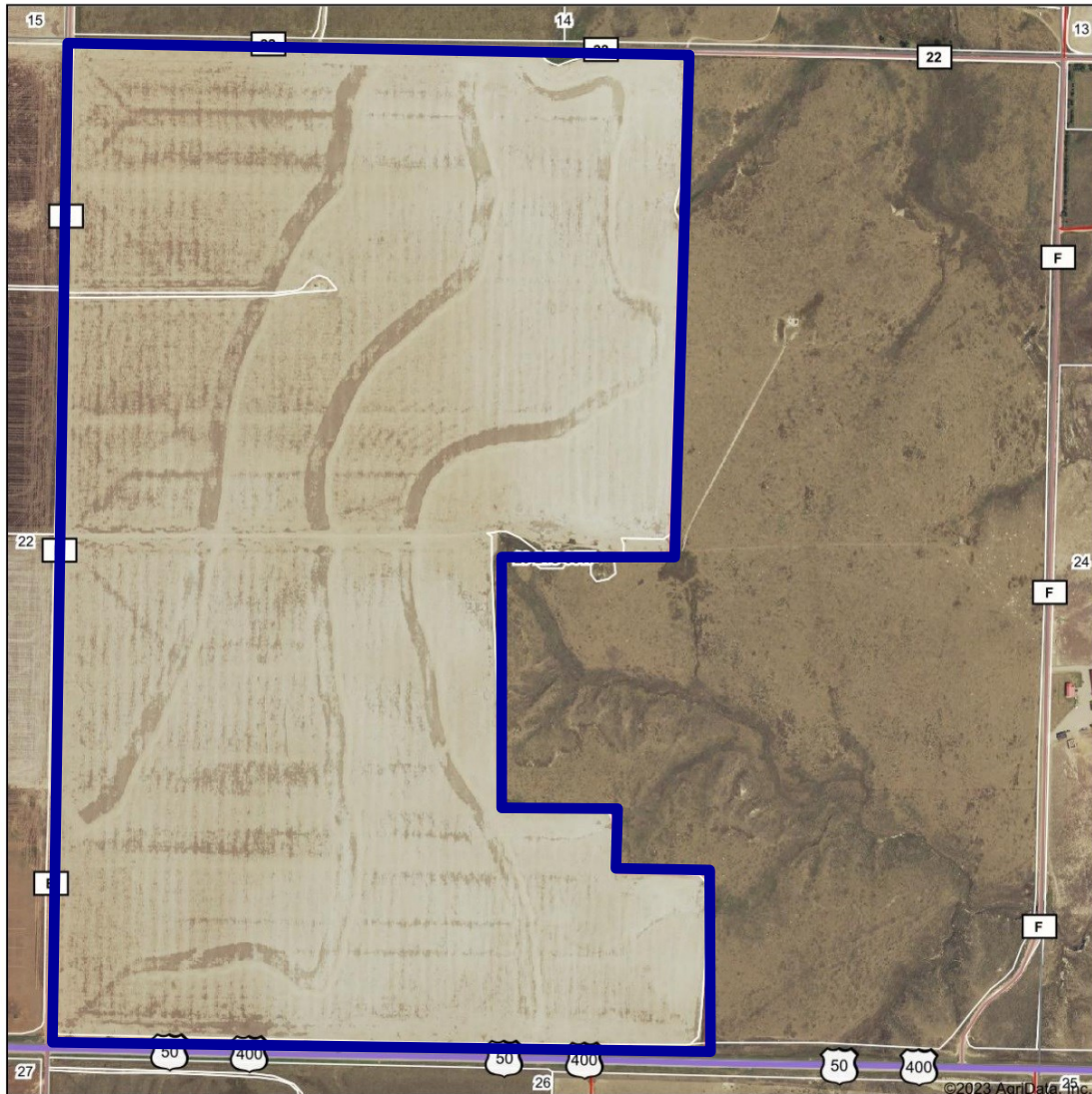


# 370 Acres of Dry Land

West 370 Acres 23-24-38

Kearny County, Kansas

Aerial Map



Maps Provided By:  
**surety**  
CUSTOMIZED ONLINE MAPPING  
© AgriData, Inc. 2023 www.AgriDataInc.com

Field borders provided by Farm Service Agency as of 5/21/2008

Map Center: 37° 57' 4.84, -101° 27' 33.13

23-24S-38W  
Kearny County  
Kansas

0ft 827ft 1653ft

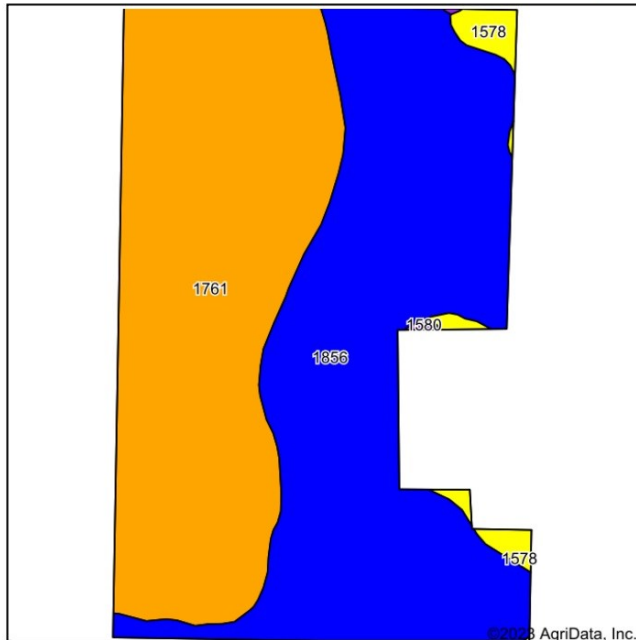


# 370 Acres of Dry Land

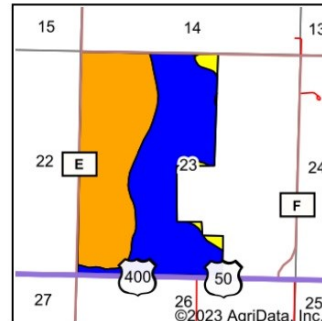
West 370 Acres 23-24-38

Kearny County, Kansas

Soils Map



Soils data provided by USDA and NRCS.



State: **Kansas**  
County: **Kearny**  
Location: **23-24S-38W**  
Township: **Hartland**



Maps Provided By:  
**surety**  
CUSTOMIZED ONLINE MAPPING  
© AgriData, Inc. 2023 www.AgriDataInc.com



Area Symbol: KS093, Soil Area Version: 19

Code	Soil Description	Acres	Percent of field	Non-Irr Class Legend	Non-Irr Class *c	Irr Class *c	Alfalfa hay Irrigated Tons	Corn Irrigated Bu	Grain sorghum Bu	Grain sorghum Irrigated Bu	Winter wheat Bu	Winter wheat Irrigated Bu	*n NCCPI Soybeans
1856	Ulysses silt loam, 0 to 1 percent slopes	186.77	50.2%		IIc	Iw			26		22		63
1761	Richfield silt loam, 0 to 1 percent slopes	175.84	47.3%		IIIc	I	6	167	33	121	26	47	65
1578	Colby silt loam, 1 to 3 percent slopes	8.62	2.3%		IVc	IIIe							54
1580	Colby silt loam, 6 to 15 percent slopes	0.47	0.1%		VIe								48
Weighted Average					2.52	*-	2.8	79	28.7	57.2	23.4	22.2	*n 63.7

\*n: The aggregation method is "Weighted Average using all components"

\*c: Using Capabilities Class Dominant Condition Aggregation Method

\*- Irr Class weighted average cannot be calculated on the current soils data due to missing data.

Soils data provided by USDA and NRCS.