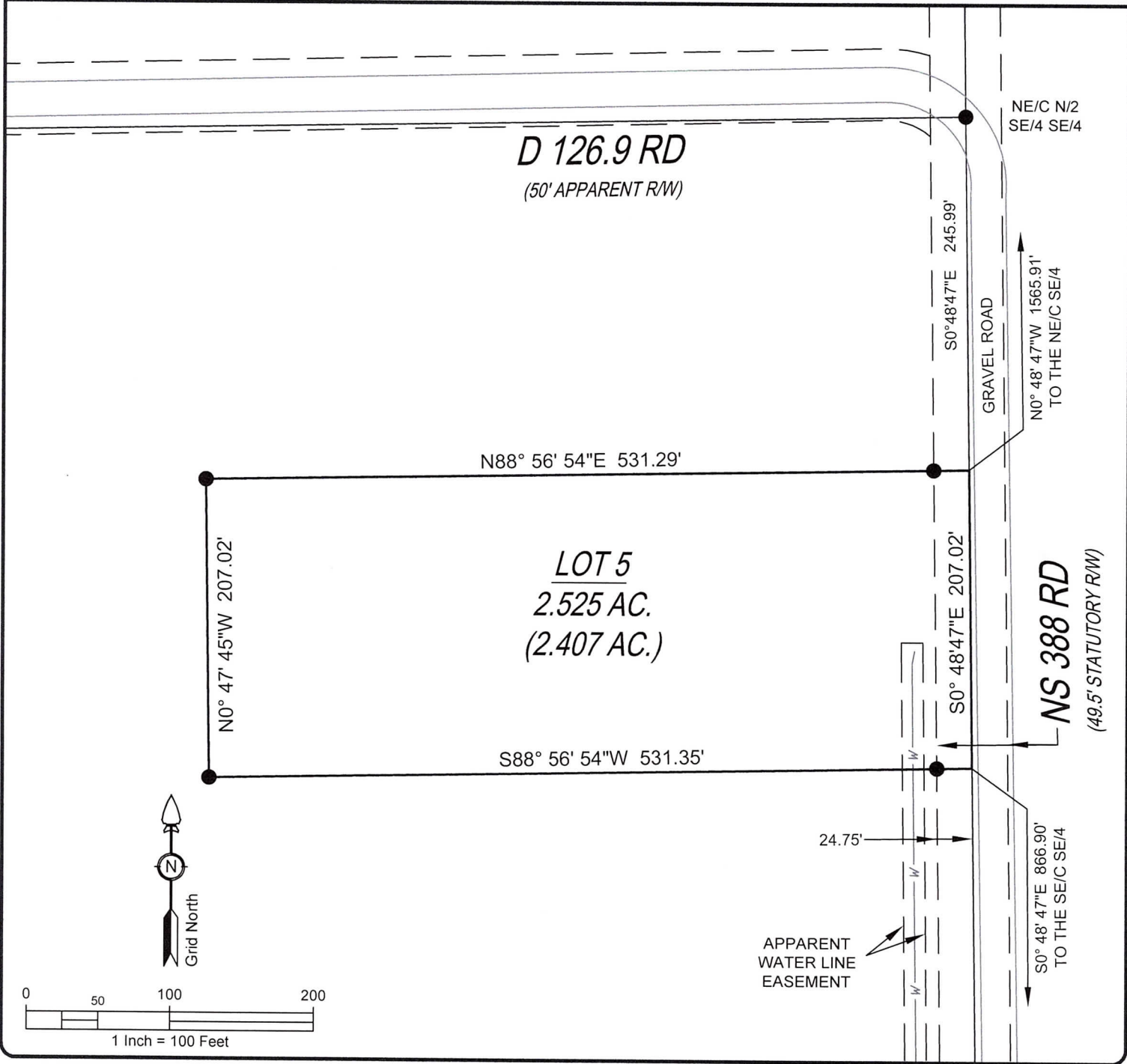




BOUNDARY SURVEY PLAT



LEGAL DESCRIPTION	LINE AND SYMBOL LEGEND	
A tract of land situated in the North Half of the Southeast Quarter of the Southeast Quarter (N/2 SE/4 SE/4) of Section Fourteen (14), Township Eight (8) North, Range Eleven (11) East of the Indian Base and Meridian, Hughes County, State of Oklahoma, being more particularly described as follows: Commencing at the Northeast Corner of said N/2 SE/4 SE/4; Thence South 0°48'47" East along the East line thereof a distance of 245.99 feet to the Point of Beginning; Thence continuing South 0°48'47" East along said East line a distance of 207.02 feet; Thence South 88°56'54" West a distance of 531.35 feet; Thence North 0°47'45" West a distance of 207.02 feet; Thence North 88°56'54" East a distance of 531.29 feet to the Point of Beginning, containing 2.525 acres, more or less, subject to any easements or rights-of-way of record.	<div><div><div><div></div></div><div>GLO Stone Found</div></div><div><div><div></div></div><div>1/2" Iron Rod Found</div></div><div><div><div></div></div><div>3/8" Iron Rod Found</div></div><div><div><div></div></div><div>1/2" Iron Rod Set (CA 7652)</div></div></div> <div><div>Property Line</div><div>Easement, as denoted</div><div>Water Line</div></div>	
GENERAL NOTES	SURVEYOR'S CERTIFICATE	
<div>1. Current Owners: Elegment Dream Acres Inc., a Texas Corporation per Warranty Deed recorded in Book 1536 at Page 479 in the Hughes County Clerk's Office.</div> <div>2. No title report furnished. Easements, rights of way, or other encumbrances other than those shown hereon may exist.</div> <div>3. Property subject to all covenants, easements, restrictions, reservations, conditions, and rights of way of public record.</div> <div>4. The basis of bearings is Grid North (Oklahoma State Plane, Zone South), NAD83 (2011).</div> <div>5. Gross Area = Total tract area</div> <div>Net Area = (Total area LESS roadway easement and r/w area)</div>	<div>I, Jason R. Lilly, a Registered Professional Land Surveyor of the State of Oklahoma, do hereby certify that I or others under my direct supervision have made a careful survey of the property shown hereon. I further certify that this Plat of Survey meets the Oklahoma Minimum Standards for the Practice of Land Surveying as adopted by the Oklahoma State Board of Licensure for Professional Engineers and Land Surveyors.</div> <div></div>	
<div><div>Foresight Land Surveying</div></div>	<div><div>FORESIGHT LAND SURVEYING, LLC</div><div>318 WEST MAIN STREET</div><div>HENRYETTA, OK 74437</div><div>918-268-2502</div><div>OFFICE@FORESIGHTSURVEYING.NET</div><div>WWW.FORESIGHTSURVEYING.NET</div><div>CA #7652</div></div> <div><div>Sheet:1 of 1</div><div>Date:07/18/2022</div><div>Drawn by:JRL</div><div>Fieldwork by:LAS</div><div>Owner:Elegment</div><div>Per:1536/479</div><div>Project No. 22-0120E</div></div>	