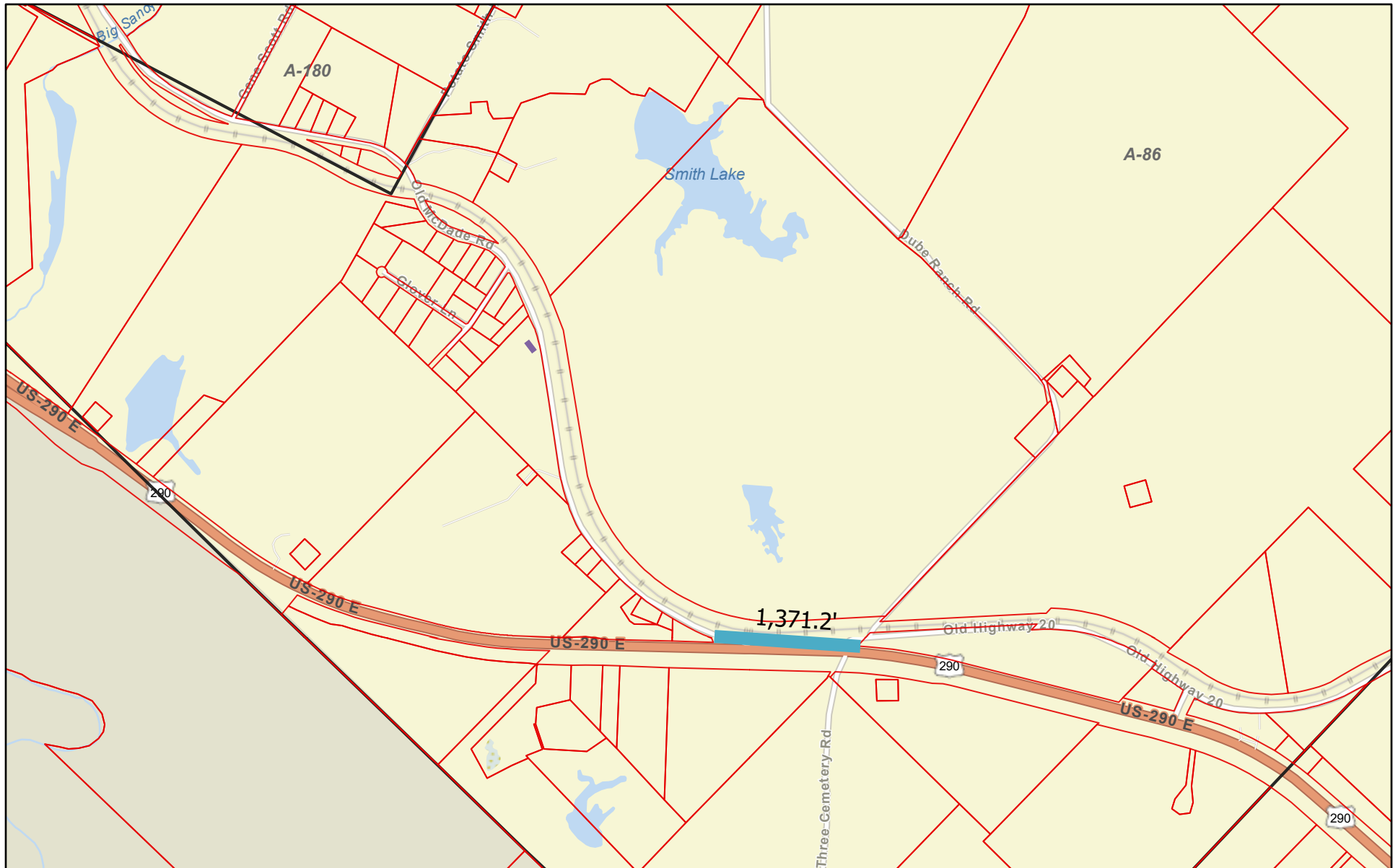




# Bastrop CAD Web Map



10/4/2021, 5:55:57 PM

 Abstracts  
 Parcels

1:18,056

0 0.13 0.25 0.5 mi  
0 0.2 0.4 0.8 km

Esri Community Maps Contributors, Baylor University, Texas Parks &

Bastrop County Appraisal District, BIS Consulting - [www.bisconsulting.com](http://www.bisconsulting.com)

Disclaimer: This product is for informational purposes only and has not been prepared for or be suitable for legal, engineering, or surveying purposes. It does not represent an on-the-ground survey and represents only the approximate relative location of boundaries.