



GORDON CHAPEL NORTH TRACT

GORDON CHAPEL RD
HAWTHORNE, FL 32640

John A. "Tony" Wallace, CF
C: 352.538.7356
tony.wallace@svn.com

Dusty Calderon
C: 407.908.9525
dustyc@svn.com

Greg Driskell
C: 386.867.2736
greg.driskell@svn.com

Dean Saunders, ALC, CCIM
C: 863.287.8340
dean@svn.com

Property Overview



Sale Price **\$305,000**

OFFERING SUMMARY

Acreage: 50 Acres
Price / Acre: \$6,100
City: Hawthorne
County: Putnam
Property Type: Timber, Recreation

PROPERTY OVERVIEW

Gordon Chapel North is a recreational tract with almost 100% uplands, merchantable planted pine, and good road access, located in the heart of Florida. This property offers an incredible opportunity for anyone looking for a small hunting tract within easy driving distance of Gainesville, Ocala, and Jacksonville.

The property is zoned AG with a FLU of A1 located on a county-maintained gravel road with 3,000 feet on Old Hawthorne Rd, providing easy access. The property offers potential uses such as Hunting, Fishing, Horse Trails, ATV Riding, and Camping.

If you're a hunting enthusiast, this property offers plentiful deer, turkey, wild hogs, and small game, making it a prime hunting spot. The property also features merchantable planted pine from 2005 and 2012, providing an opportunity for income potential.

At Gordon Chapel North, you'll be able to enjoy all the perks of a recreational tract without sacrificing convenience. This property is located within easy driving distance of major Florida cities and offers a variety of potential uses for your enjoyment.

If you're looking for a peaceful retreat where you can enjoy nature while still having the option of generating income, look no further than Gordon Chapel North.

Specifications & Features



SPECIFICATIONS & FEATURES

Land Types:

- Hunting & Recreation Properties
- Land Investment
- Timberland

Uplands / Wetlands:

97% uplands

Soil Types:

- Millhopper
- Sparr
- Holopaw

Taxes & Tax Year:

Not a stand-alone tax parcel. Taxes on parent parcel were \$3.19 per acre in 2022

Zoning / FLU:

Zoning AG, FLU - A1

Road Frontage:

3,000 feet on Old Hawthorne Rd - A county-maintained gravel road

Nearest Point of Interest:

Gainesville and the University of Florida 18 miles to the west, Palatka and the St. Johns River 25 miles to the east. Major lakes located within 15 miles are Orange, Santa Fe, Newnans, Lochloosa, and Rodman Reservoir, plus a host of smaller lakes within 5 miles.

Current Use:

Timber Production, Recreation

Potential Recreational / Alt Uses:

Hunting, Fishing, Horse Trails, ATV Riding, Camping

Land Cover:

Planted Pines and Natural Hardwoods

Game Population Information:

Plentiful deer, turkey, wild hogs and small game

Age of Stages of Timber:

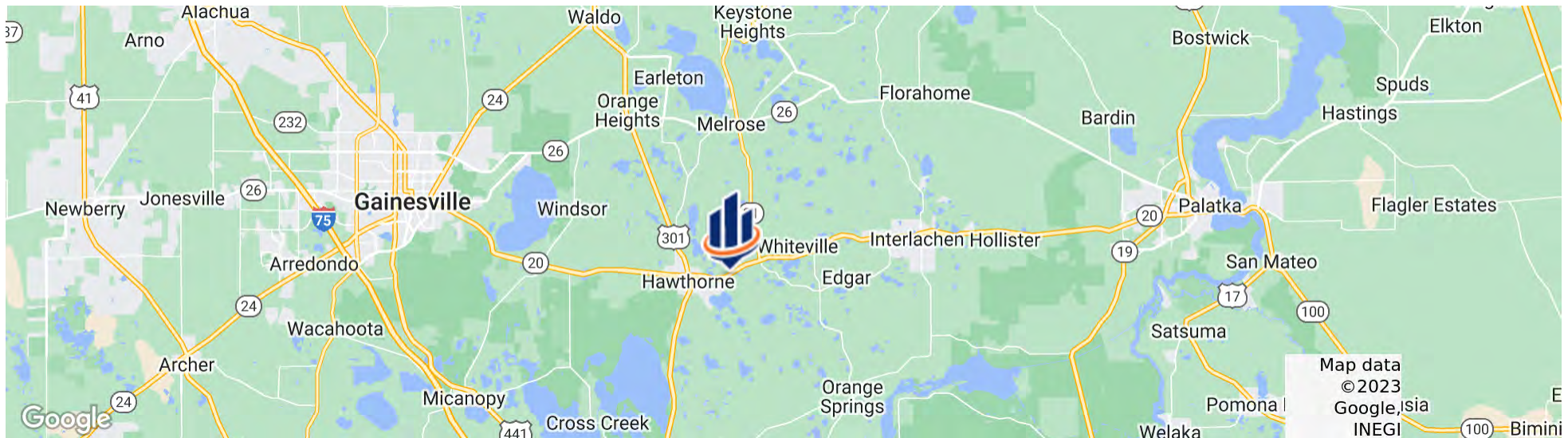
2005 and 2012 planted Slash Pine

Location



LOCATION & DRIVING DIRECTIONS

Parcel:	A Portion of 30-10-23-0000-0040-0100
GPS:	29.5955337, -82.0481404
Driving Directions:	From Hawthorne go east on SR-20 3 miles; Turn Right on Gordon Chapel Rd; Go south 1/2 mile then turn Right on Old Hawthorne Road [20A]; Go 0.6 mile the property begins on your right
Showing Instructions:	Contact listing agents

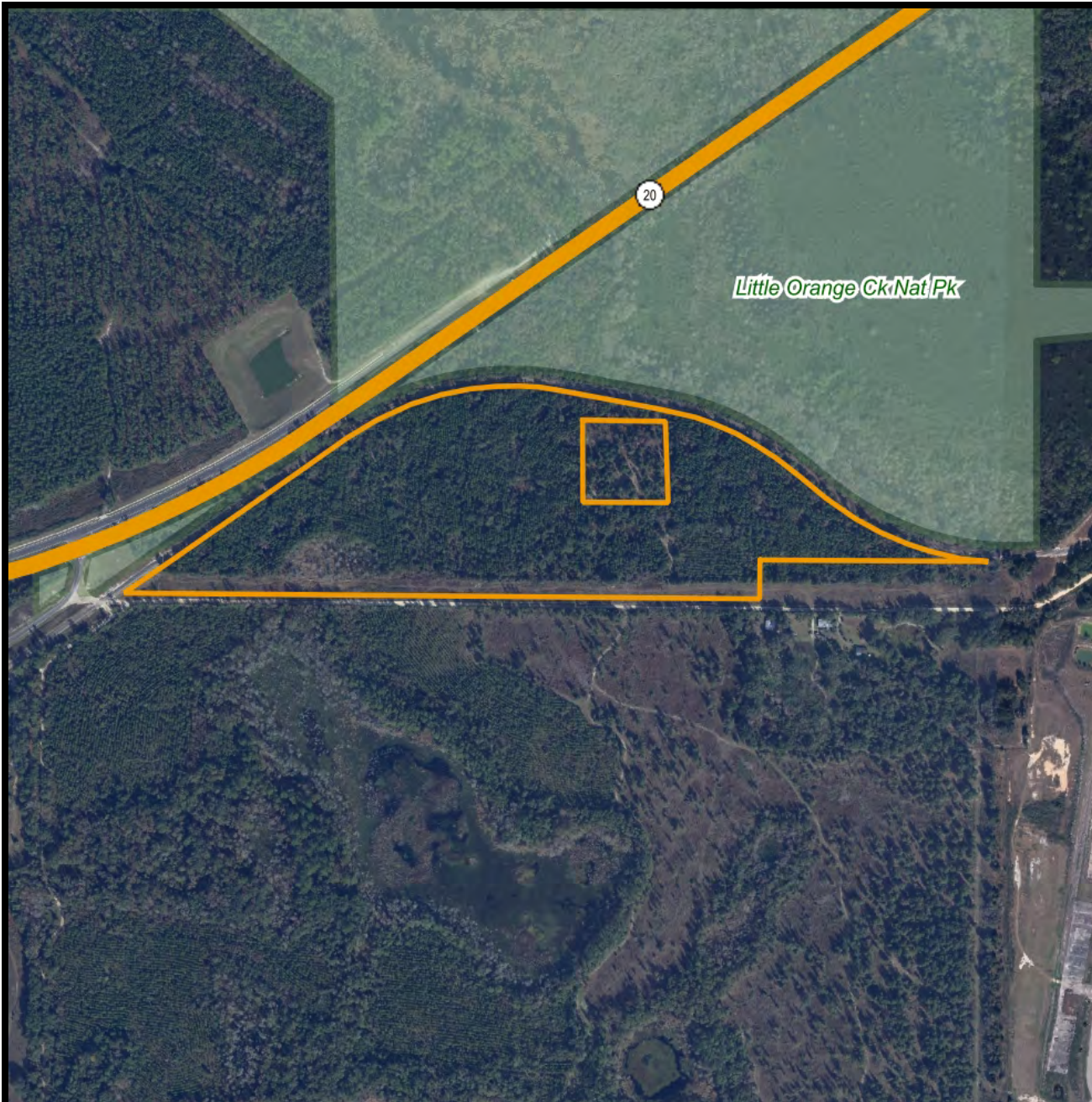




Photos

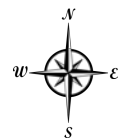






Gordon Chapel North 50 Acres

- Polygons Drawing
- Lines Drawing
- Labels Drawing
- Points Drawing
- ~ Toll Roads
- ~ Interstates
- ~ US Roads
- ~ State Roads
- ~ County Roads
- ~ Interstates
- ~ Toll Roads
- ~ US Roads
- ~ State Roads
- ~ County Roads
- Managed Lands FNAI



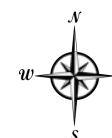
0 590 1180 1770 ft

© 2021 SVNIC. SVN | Saunders Ralston Dantzler Real Estate® is a registered trademark licensed to SVN Shared Value Network®. Any information displayed should be verified and is not guaranteed to be accurate by SVN Saunders Ralston Dantzler. You may not copy or use this material without written consent from SVN Saunders Ralston Dantzler.



Gordon Chapel North 50 Acres

- Polygons Drawing
- Lines Drawing
- Labels Drawing
- Points Drawing
- Toll Roads
- Interstates
- US Roads
- State Roads
- County Roads
- Interstates
- Toll Roads
- US Roads
- State Roads
- County Roads
- Managed Lands FNAI
- Five Foot Contours
- Five Foot Contours2
- Estuarine
- Lacustrine
- Marine
- Palustrine
- Riverine

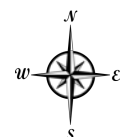
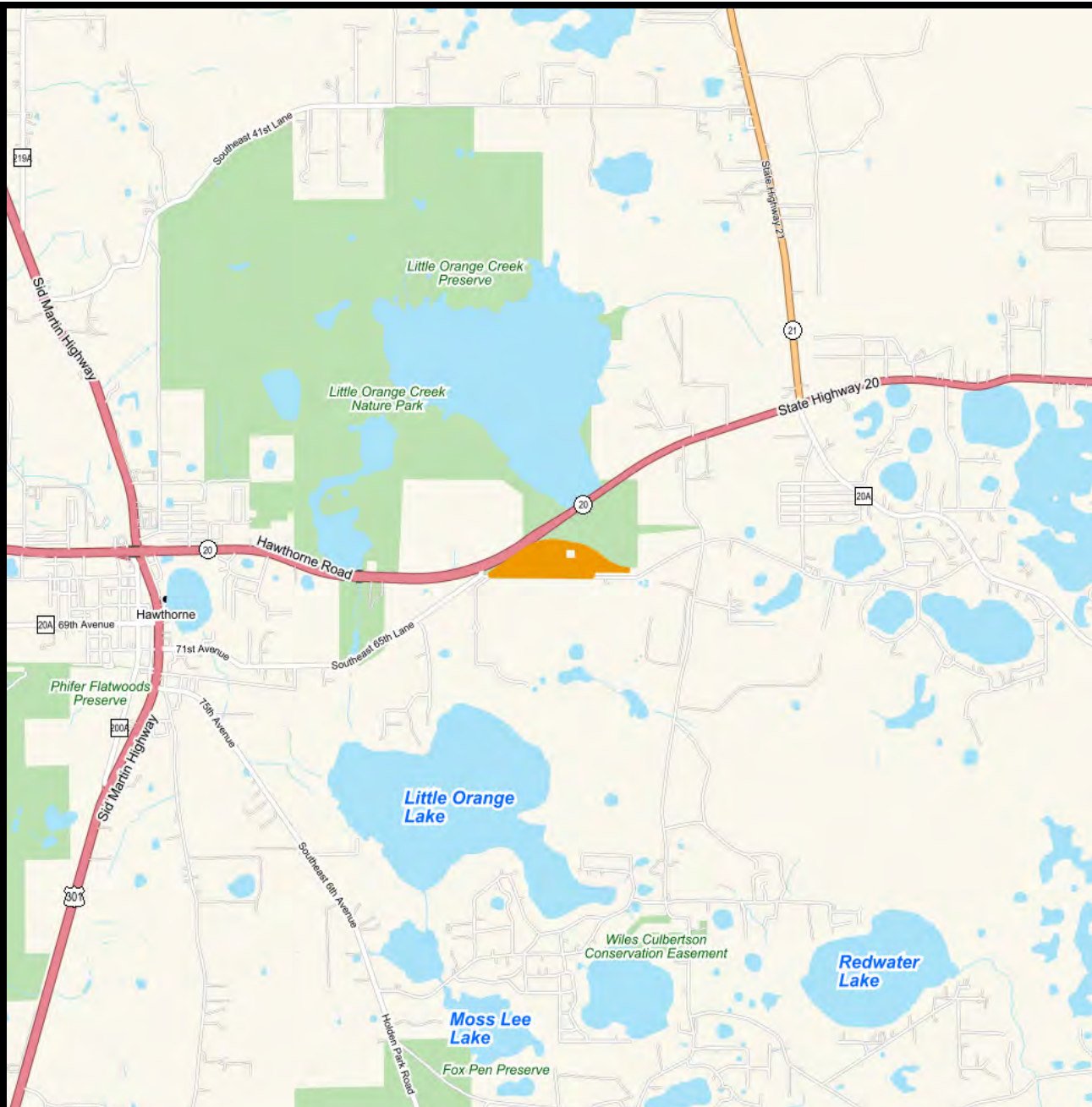


0 560 1120 1680 ft

© 2021 SVN. SVN | Saunders Ralston Dantzler Real Estate® is a registered trademark licensed to SVN Shared Value Network®. Any information displayed should be verified and is not guaranteed to be accurate by SVN Saunders Ralston Dantzler. You may not copy or use this material without written consent from SVN Saunders Ralston Dantzler.

Gordon Chapel North 50 Acres

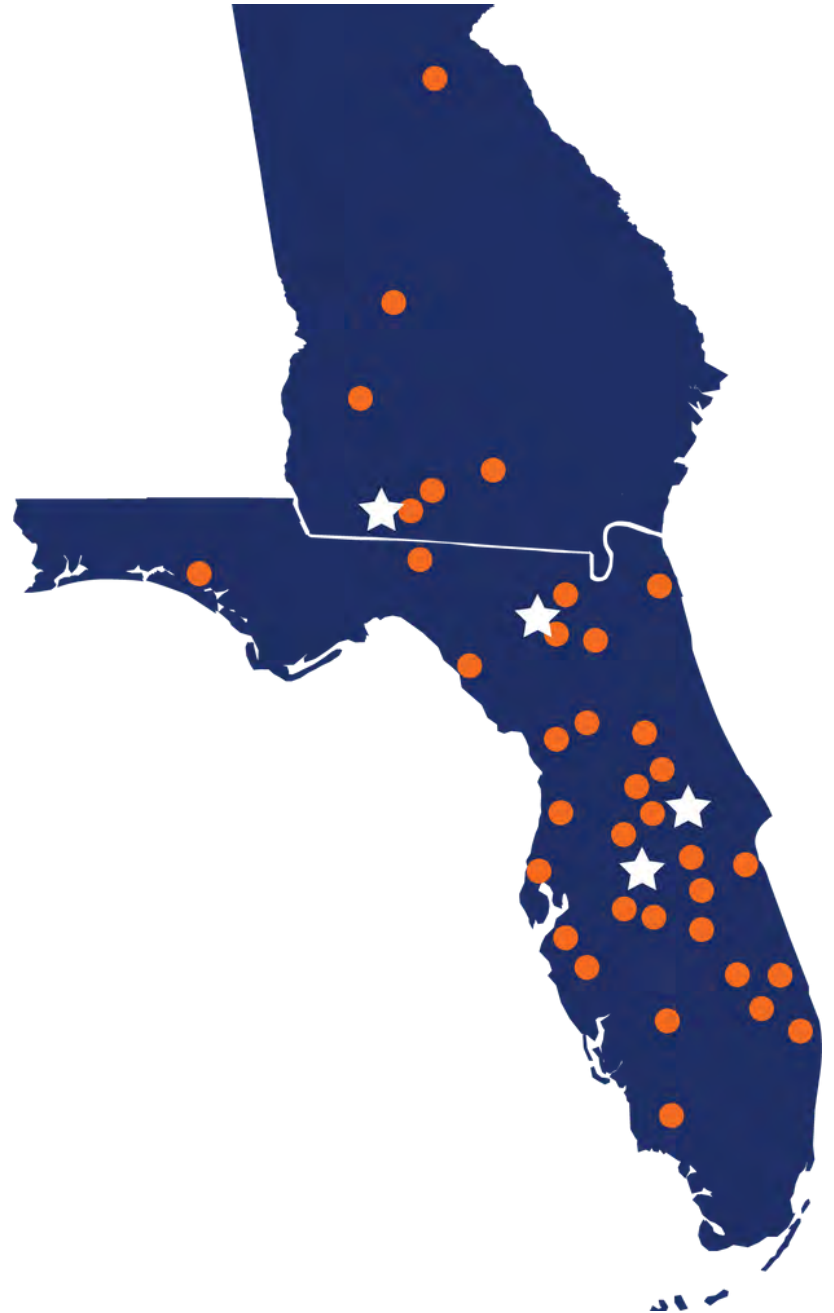
- Polygons Drawing
- Lines Drawing
- Labels Drawing
- Points Drawing
- Water Labels
- Water Labels
- Water Labels



© 2021 SVN. SVN | Saunders Ralston Dantzler Real Estate® is a registered trademark licensed to SVN Shared Value Network®. Any information displayed should be verified and is not guaranteed to be accurate by SVN Saunders Ralston Dantzler. You may not copy or use this material without written consent from SVN Saunders Ralston Dantzler.

Advisor & Office **LOCATIONS**

Our company includes over 80 advisors who are highly credentialed with specialized leadership in organizations across the real estate industry including 14 Certified Commercial Investment Member (CCIM) designees and 13 Accredited Land Consultants (ALC) among many other notable certifications. With offices in Florida and Georgia, we offer increased value to our clients on both sides of the state line.





For more information visit SVNsaunders.com

HEADQUARTERS

1723 Bartow Road
Lakeland, Florida 33801
863.648.1528

ORLANDO

605 E Robinson Street, Suite 410
Orlando, Florida 32801
407.516.4300

NORTH FLORIDA

356 NW Lake City Avenue
Lake City, Florida 32055
352.364.0070

GEORGIA

125 N Broad Street, Suite 210
Thomasville, Georgia 31792
229.299.8600

©2023 SVN | Saunders Ralston Dantzler Real Estate. All SVN® Offices Independently Owned and Operated SVN | Saunders Ralston Dantzler Real Estate is a full-service land and commercial real estate brokerage with over \$4 billion in transactions representing buyers, sellers, investors, institutions, and landowners since 1996. We are recognized nationally as an authority on all types of land, including agriculture, ranch, recreation, residential development, and international properties. Our commercial real estate services include property management, leasing and tenant representation, valuation, business brokerage, and advisory and counseling services for office, retail, industrial, and multifamily properties. Our firm also features an auction company, forestry division, international partnerships, hunting lease management, and extensive expertise in conservation easements. Located in Florida and Georgia, we provide proven leadership and collaborative expertise backed by the strength of the SVN® global platform.

