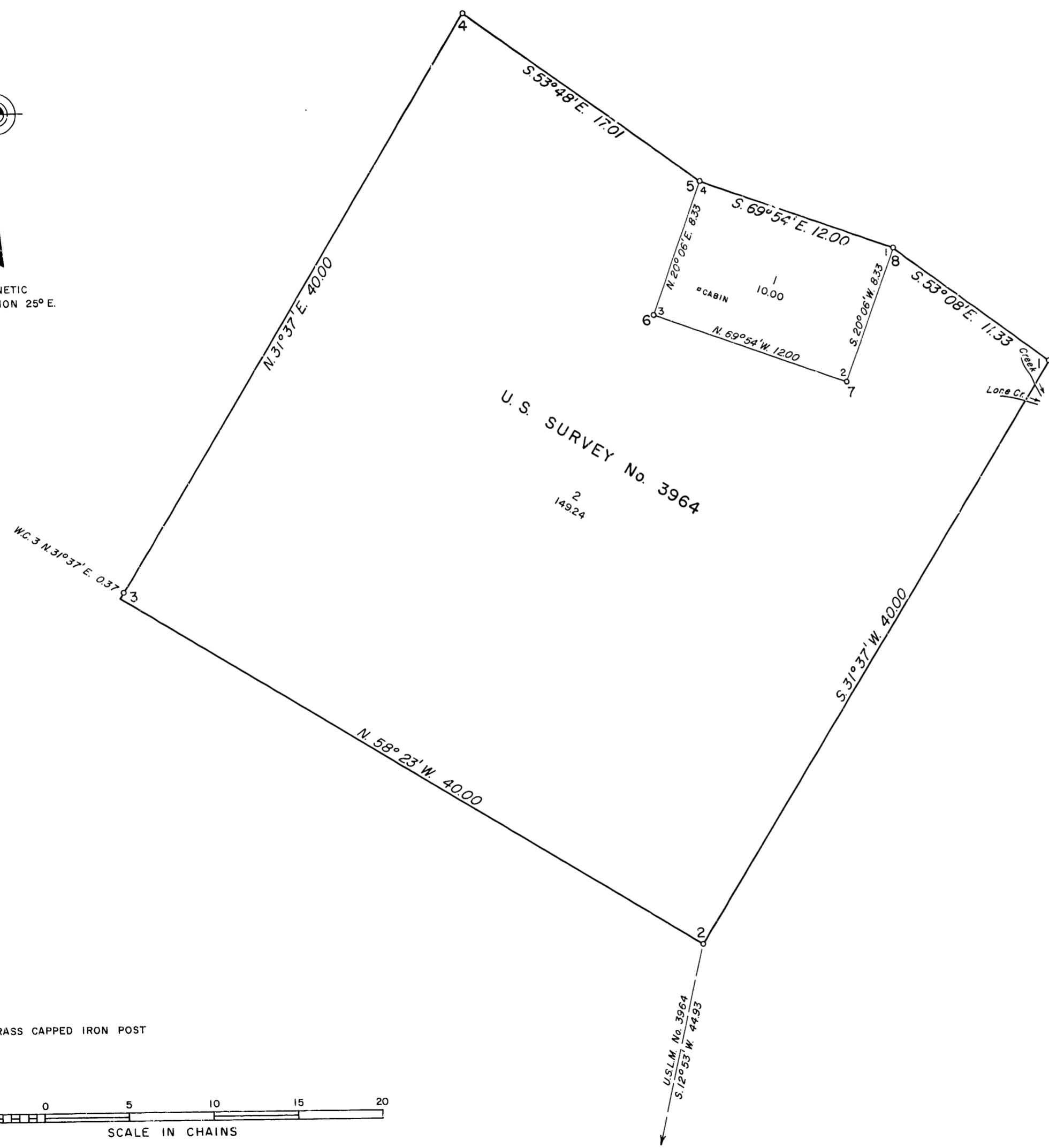
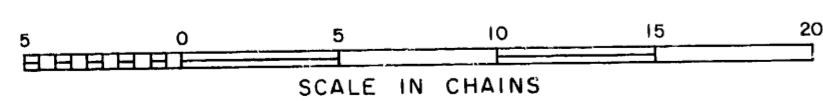


MAGNETIC DECLINATION 25° E.



U. S. SURVEY No. 3964
2
149.24

o BRASS CAPPED IRON POST



SCALE IN CHAINS

U. S. SURVEY NO. 3964, ALASKA

EMBRACING LOTS 1 AND 2
SITUATED
NEAR LONE CREEK
APPROXIMATELY FIVE MILES SOUTHERLY OF FELT LAKE,
BELUGA RIVER AREA
AND
DESIGNATION OF U. S. LOCATION MONUMENT NO. 3964

GEOGRAPHIC POSITION CORNER NO. 2, LOT 2
LATITUDE 61°10'36 37" N., LONGITUDE 151°18'22.88" W.

AREA: 159.24 ACRES

SURVEYED BY:
ORVILLE N. EGGEN, SUPERVISORY CADASTRAL SURVEYOR
SEPTEMBER 20 TO 23, 1962

Under Special Instructions
Dated August 29, 1961, and
Approved September 11, 1961

UNITED STATES DEPARTMENT OF THE INTERIOR
BUREAU OF LAND MANAGEMENT
Washington, D. C. September 15, 1964

This plat is strictly conformable to the approved field notes, and the survey, having been correctly executed in accordance with the requirements of law and the regulations of this Bureau, is hereby accepted.

For the Director

Chief, Division of Engineering