

Sandfall Mountain | 192 ± Acres



Facts and Features

Colbert County, Alabama

Sandfall Trail, Tuscumbia AL 35674

192 ± Acres

Best Use: Home site | Recreational

About the Property

Stunning, peaceful mountain retreat where the possibilities are only limited by your imagination and budget. Whether your dream is to build a majestic home on the ridgetop with spectacular views of the Shoals area below or to simply get away from your hectic, everyday life and enjoy hiking, camping, hunting or just watching the beautiful sunset and eagles soaring above, this property is for you. This beautiful tract is loaded with deer and turkey and covered in timber. Spend your days exploring or having a picnic among the rock outcroppings and shelter bluffs with your family in the ridgetop hollows and draws. For the developer, the ridgetop also offers several homesites with views that cannot be matched.

Located 10 minutes from downtown Tuscumbia, this property offers the best of both worlds, secluded yet easily accessible to all the modern conveniences just a short drive away in Tuscumbia, Muscle Shoals, Sheffield, and Florence.

For Sale
\$633,000



**SOUTH MAIN
LAND REALTY**

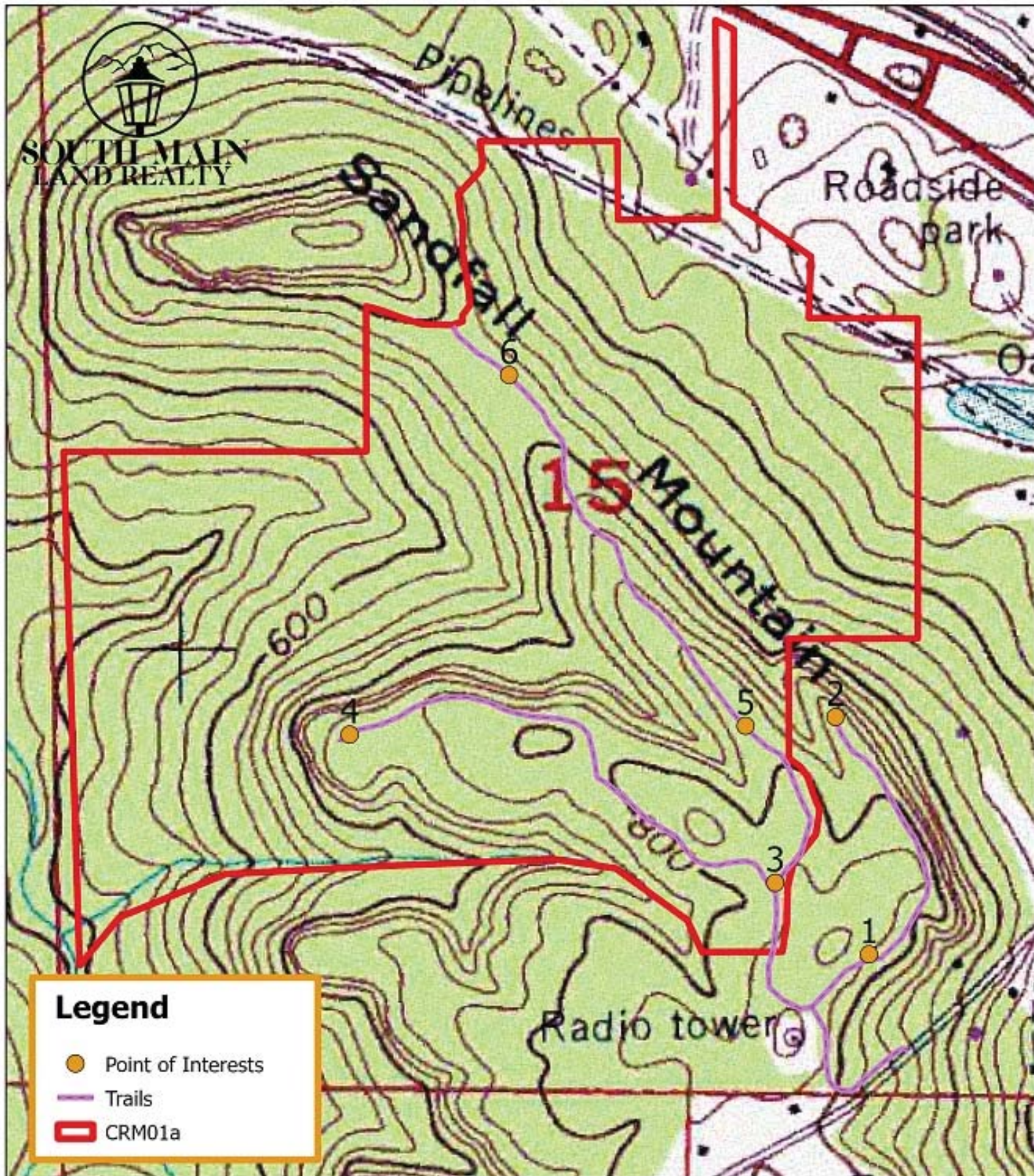
Clyde Brisendine

256-627-1975

cbrisendine@SouthMainRealty.com

Sandfall Mountain | 192 ± Acres





CRM01a
Colbert County, AL
Trails and Sign Locations



South Main Land Realty
(256) 383-8990

0 0.07 0.15 0.22 Miles



**SOUTH MAIN
LAND REALTY**

Legend

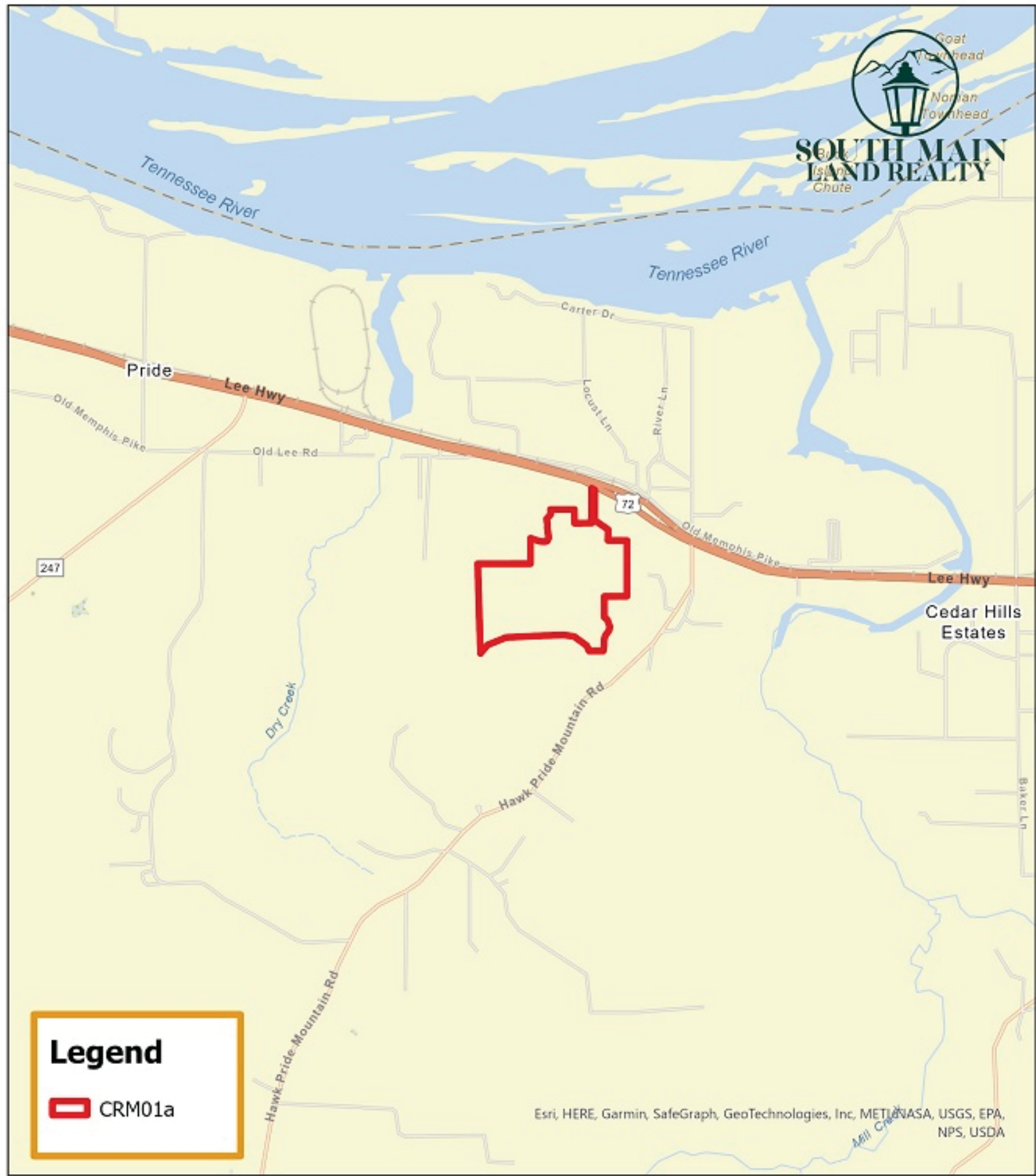
- Point of Interests
- Trails
- ▭ CRM01a



South Main Land Realty
(256) 383-8990

0 0.07 0.15 0.22 Miles

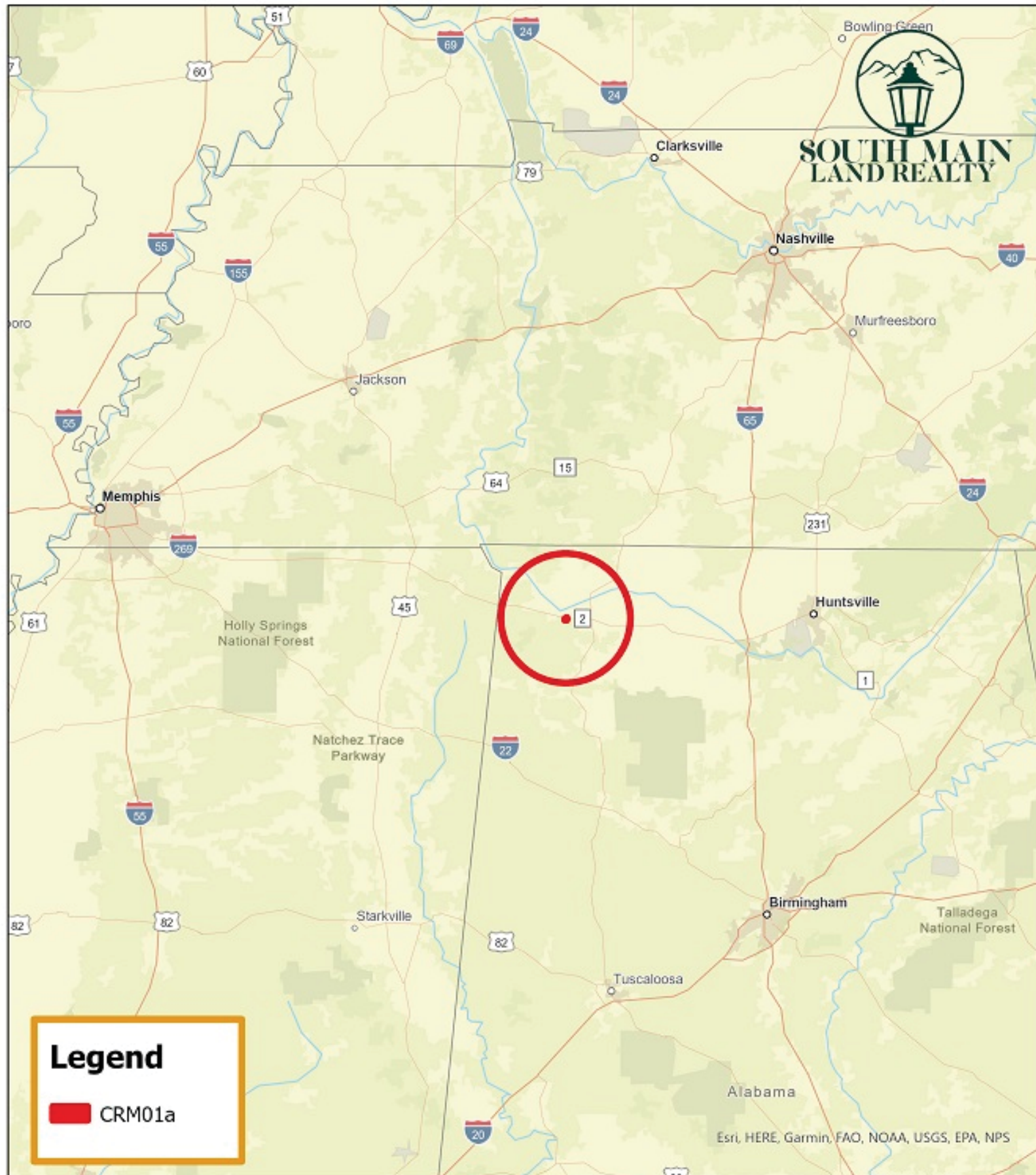
CRM01a
Colbert County, AL
Trails and Sign Locations



CRM01a
Colbert County, AL
Local Roads

South Main Land Realty
(256) 383-8990





CRM01a
Colbert County, AL
General Location



South Main Land Realty
(256) 383-8990

0 25 50 75 Miles