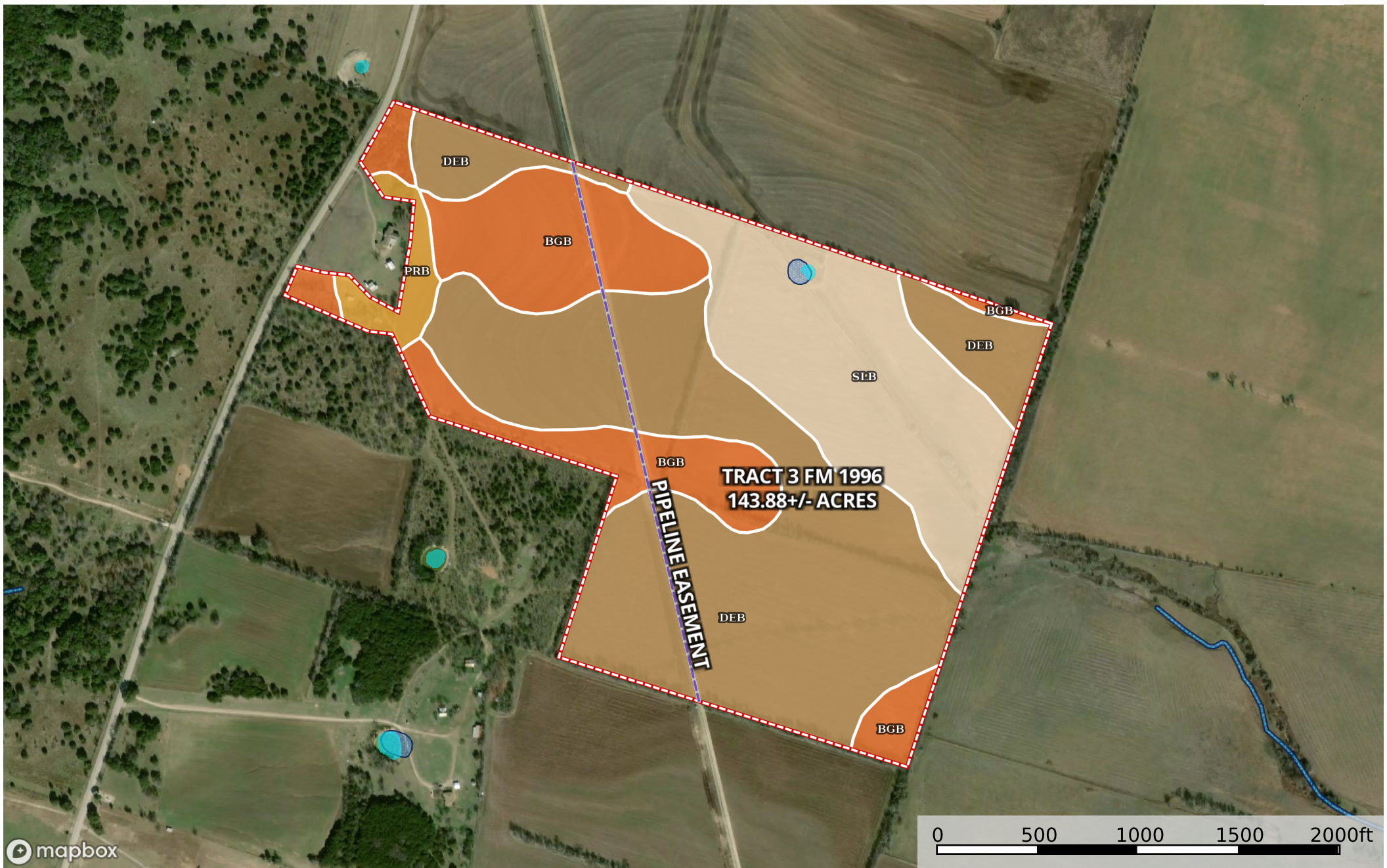


Morris - Tract 3 FM 1996 143.88+/- Acres
Coryell County, Texas, 143.88 AC +/-



- Pipeline
- 143.88+/- Acres
- Boundary
- Wetlands
- Riparian
- Stream, Intermittent
- River/Creek
- Water Body

Boundary 143.88 ac

SOIL CODE	SOIL DESCRIPTION	ACRES	%	CPI	NCCPI	CAP
DeB	Denton silty clay, 1 to 3 percent slopes	75.63	52.56	0	43	3e
SIB	Slidell silty clay, 0 to 2 percent slopes	32.8	22.8	0	42	3e
BgB	Bolar gravelly clay loam, 1 to 4 percent slopes	31.57	21.94	0	36	3e
PrB	Purves gravelly silty clay, 1 to 5 percent slopes	3.88	2.7	0	17	4s
TOTALS		143.88(*)	100%	-	40.53	3.03

(*) Total acres may differ in the second decimal compared to the sum of each acreage soil. This is due to a round error because we only show the acres of each soil with two decimal.

Capability Legend

Increased Limitations and Hazards

Decreased Adaptability and Freedom of Choice Users

Land, Capability

	1	2	3	4	5	6	7	8
'Wild Life'	•	•	•	•	•	•	•	•
Forestry	•	•	•	•	•	•	•	
Limited	•	•	•	•	•	•	•	
Moderate	•	•	•	•	•	•		
Intense	•	•	•	•	•			
Limited	•	•	•	•				
Moderate	•	•	•					
Intense	•	•						
Very Intense	•							

Grazing Cultivation

(c) climatic limitations (e) susceptibility to erosion

(s) soil limitations within the rooting zone (w) excess of water