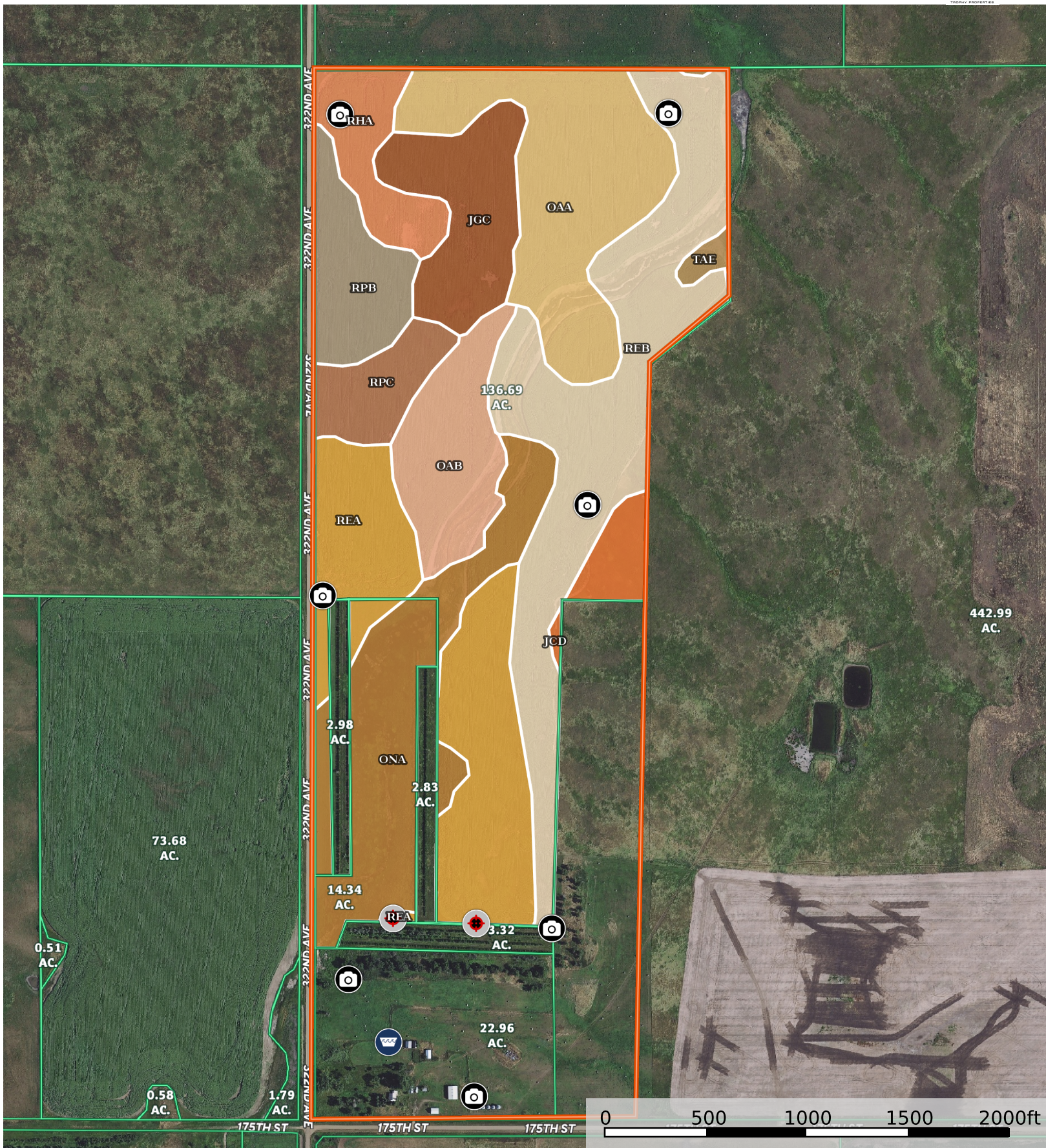


Churnside

Sully County, South Dakota, 210 AC +/-



Mark Schweigert

P: 6058409578

www.TallTinesProperties.com

208 South Main Street Winner, SD 57580



The information contained herein was obtained from sources deemed to be reliable.

Land id™ Services makes no warranties or guarantees as to the completeness or accuracy thereof.

|  150.8 ac

SOIL CODE	SOIL DESCRIPTION	ACRES	%	CPI	NCCPI	CAP
ReB	Ree loam, 2 to 5 percent slopes	33.2	22.01	80	51	2e
ReA	Ree loam, 0 to 2 percent slopes	25.28	16.76	86	52	2c
OaA	Oahe-Delmont loams, 0 to 2 percent slopes	23.0	15.25	53	34	3s
OnA	Mobridge silt loam, 0 to 2 percent slopes	20.93	13.88	94	64	2c
JgC	Java-Glenham loams, 3 to 9 percent slopes	11.63	7.71	63	55	4e
OaB	Oahe-Delmont loams, 2 to 6 percent slopes	11.09	7.35	47	33	3e
RpB	Raber-Peno loams, 2 to 6 percent slopes	8.3	5.5	65	52	2e
RhA	Eakin-Raber complex, 0 to 2 percent slopes	6.95	4.61	84	56	2c
RpC	Raber-Peno loams, 6 to 9 percent slopes	5.75	3.81	52	52	3e
JcD	Java-Betts stony complex, 3 to 12 percent slopes	3.52	2.33	25	47	7s
TaE	Talmo gravelly loam, 9 to 25 percent slopes	1.15	0.76	9	22	6s
TOTALS		150.8(*)	100%	71.55	49.37	2.57









(*) Total acres may differ in the second decimal compared to the sum of each acreage soil. This is due to a round error because we only show the acres of each soil with two decimal.

Capability Legend

Increased Limitations and Hazards

Decreased Adaptability and Freedom of Choice Users

Land, Capability

								
	1	2	3	4	5	6	7	8
'Wild Life'	•	•	•	•	•	•	•	•
Forestry	•	•	•	•	•	•	•	
Limited	•	•	•	•	•	•	•	
Moderate	•	•	•	•	•	•		
Intense	•	•	•	•	•			
Limited	•	•	•	•				
Moderate	•	•	•					
Intense	•	•						
Very Intense	•							

Grazing Cultivation

(c) climatic limitations (e) susceptibility to erosion

(s) soil limitations within the rooting zone (w) excess of water