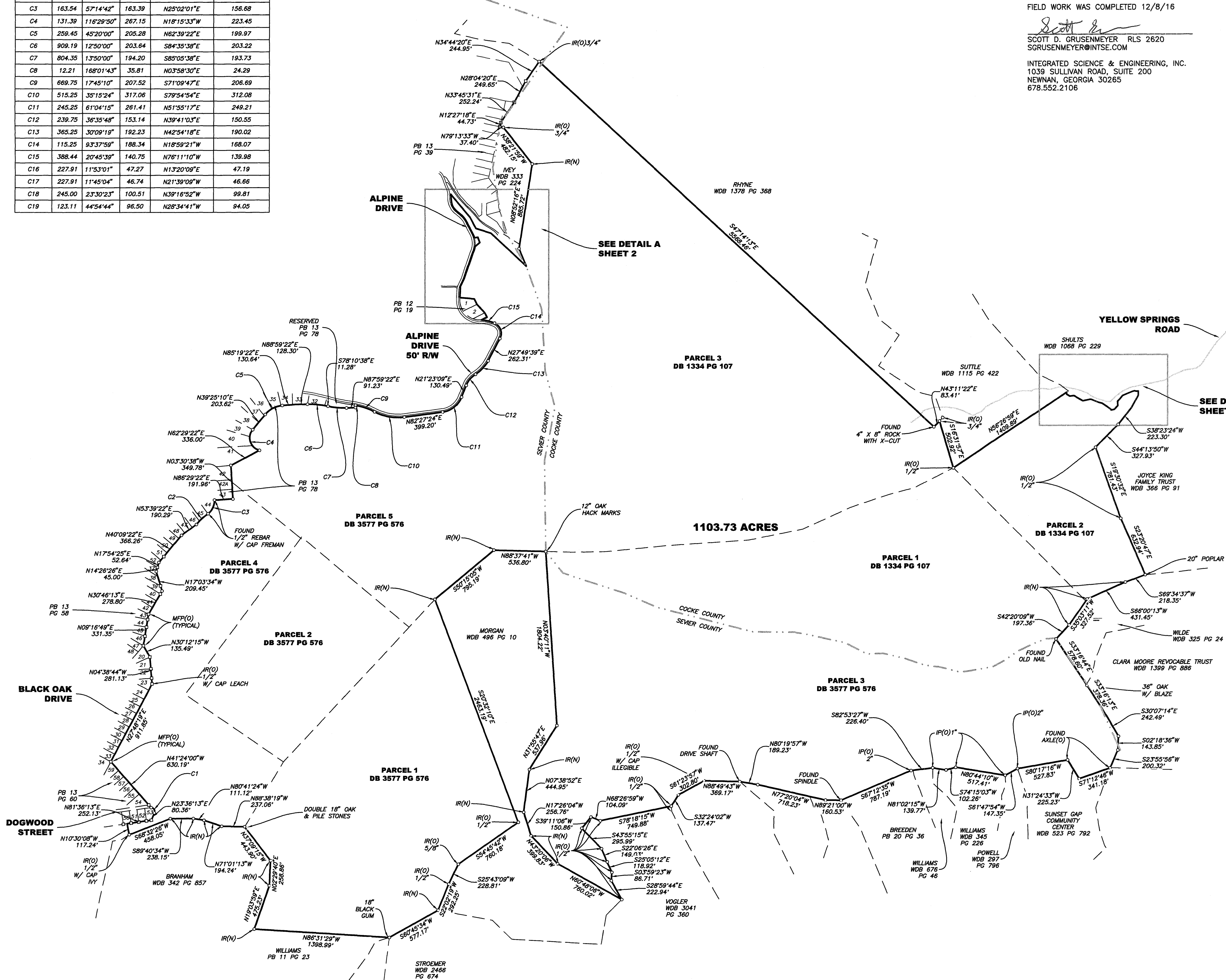


Line Table		
Line #	Direction	Length
L1	N63.36°49'E	63.59
L2	N26°23'11"W	50.00
L3	N43°27'11"W	117.80
L4	N25°17'14"W	64.91
L5	N50°53'48"E	64.48
L6	S81°21'37"W	36.51
L7	N20°11'08"W	59.79
L8	N27°31'41"W	141.74
L9	N51°02'04"W	57.25
L10	N06°07'19"W	85.62
L11	S39°49'16"E	313.50
L12	S27°58'16"E	127.58
L13	S72°29'16"E	162.74
L14	S46°59'16"E	164.00
L15	S46°33'37"E	340.77
L16	S01°26'26"W	20.81
L17	S58°56'30"E	38.34
L18	N63°23'53"E	43.37
L19	S59°52'25"E	108.31
L20	N77°47'31"E	84.78
L21	S67°32'57"E	86.66
L22	S75°31'18"E	34.65
L23	S57°06'18"E	62.57
L24	S53°02'52"E	42.88
L25	S26°55'51"E	12.45
L26	N56°15'55"E	33.75
L27	N42°43'13"E	52.09
L28	N3°09'57"W	43.23
L29	N39°17'10"E	81.26
L30	N67°59'08"E	130.51
L31	S78°48'28"E	25.45
L32	N80°59'43"E	17.39
L33	S00°23'39"W	45.17



NOTES:
1 ADDITIONAL CORNERS WILL BE SET AND A REVISED SURVEY ISSUED
2 INTERIOR LINES WERE NOT SURVEYED

[illegible]

