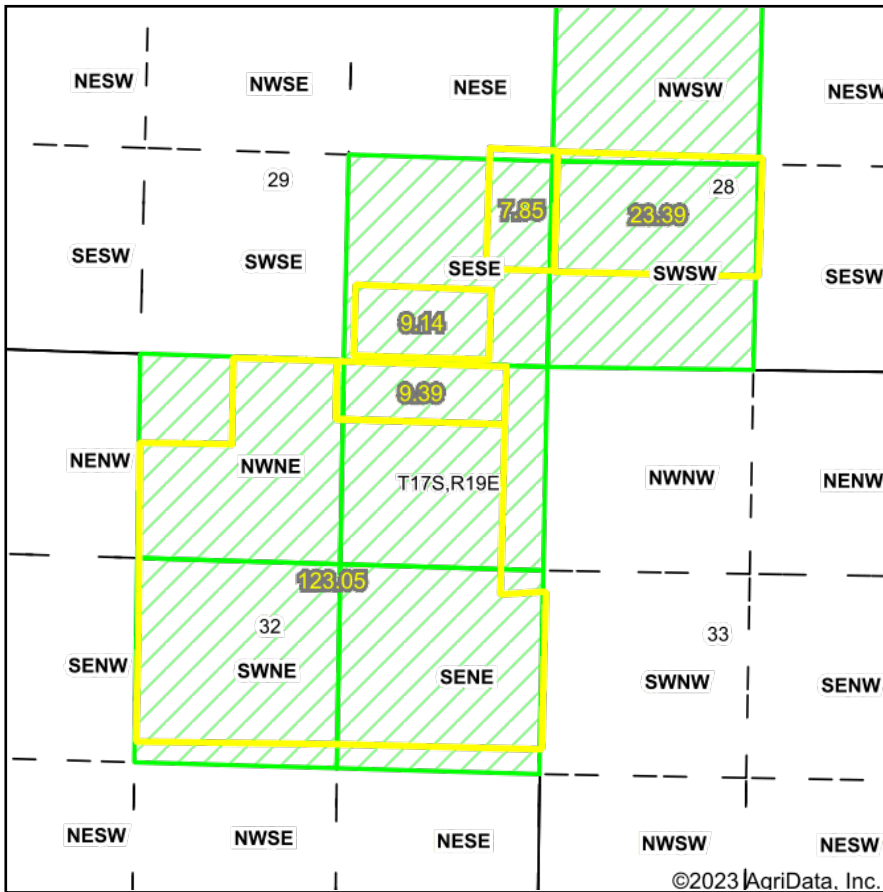
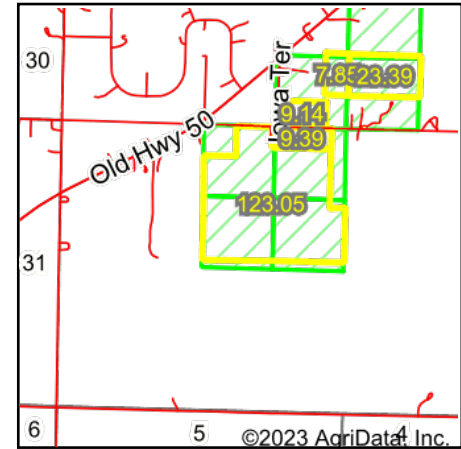


PLSS Legal Description



Map Center: 38° 31' 58.79, -95° 19' 38.77

0ft 3037ft 6075ft



Acres: **172.82**
 Date: **5/2/2023**
 Township: **Lincoln**
 County: **Franklin**
 State: **Kansas**



Maps Provided By:



PLSS Source: **Various State Sources**

PLSS Note: **No Government Lots. Quarters created by equally splitting the sections**

Short Legal:

PT NWSW; PT SWSW 28-17S-19E AND PT SESE 29-17S-19E AND PT NWNE; PT NENE; PT SWNE; PT SENE 32-17S-19E

Long Legal:

PART OF THE NW1/4 SW1/4; PART OF THE SW1/4 SW1/4 OF SECTION 28, TOWNSHIP 17 SOUTH, 19 EAST, FRANKLIN COUNTY, KANSAS AND PART OF THE SE1/4 SE1/4 OF SECTION 29, TOWNSHIP 17 SOUTH, 19 EAST, FRANKLIN COUNTY, KANSAS AND PART OF THE NW1/4 NE1/4; PART OF THE NE1/4 NE1/4; PART OF THE SW1/4 NE1/4; PART OF THE SE1/4 NE1/4 OF SECTION 32, TOWNSHIP 17 SOUTH, 19 EAST, FRANKLIN COUNTY, KANSAS