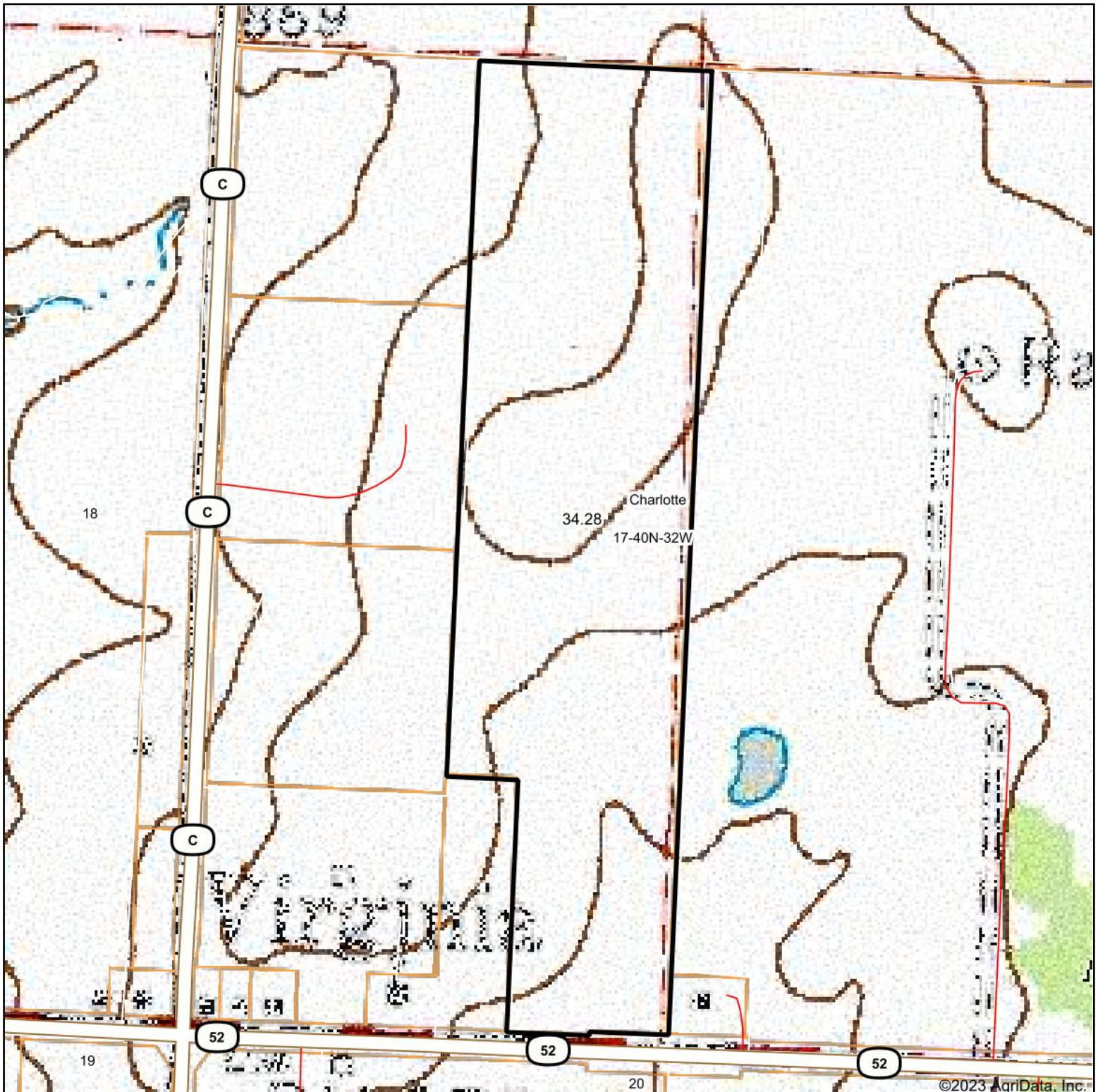


Topography Map



map center: 38° 16' 14.59, -94° 29' 32.71

0ft 417ft 834ft



17-40N-32W
Bates County
Missouri

Maps Provided By:
 **surety**
CUSTOMIZED ONLINE MAPPING
© AgriData, Inc. 2023 www.AgriDataInc.com



Field borders provided by Farm Service Agency as of 5/21/2008.