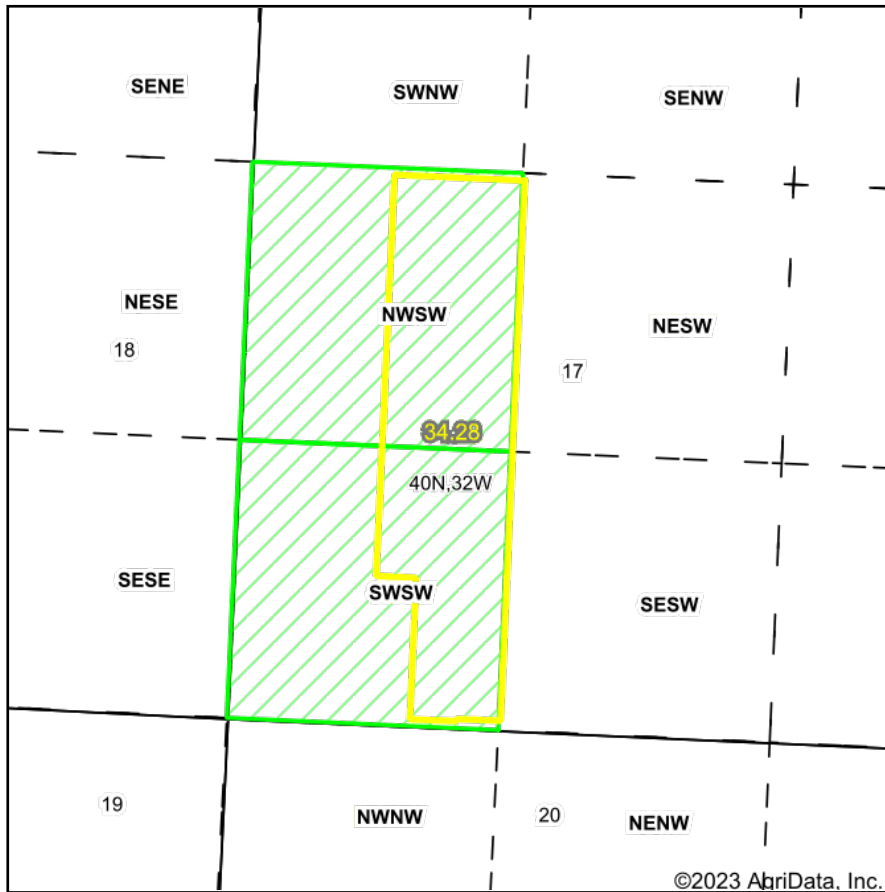
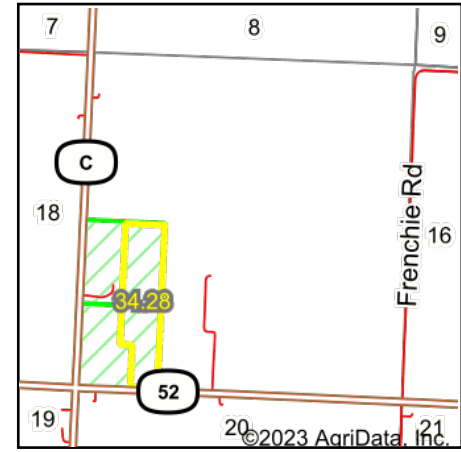


# PLSS Legal Description



Map Center: 38° 16' 14.59, -94° 29' 32.71

0ft 2610ft 5221ft



Acres: 34.28  
Date: 5/19/2023  
Township: Charlotte  
County: Bates  
State: Missouri



Maps Provided By:



PLSS Source: Various State Sources

PLSS Note: No Government Lots. Quarters created by equally splitting the sections

Short Legal:

PT NWSW; PT SWSW 17-40N-32W

Long Legal:

PART OF THE NW1/4 SW1/4; PART OF THE SW1/4 SW1/4 OF SECTION 17, TOWNSHIP 40 NORTH, 32 WEST, BATES COUNTY, MISSOURI