



**Fischbach**  
LAND COMPANY



**SPRINGHEAD  
RANCH  
HOMESITES**

**2.26± - 10.59± ACRES**

# Property Overview

Create your dream homestead on one of these private and well maintained homesites, featuring a mix of lush green pastures and mature oaks, located on the dead-end of Kilgore Road in Plant City, FL. This listing consists of 4 platted lots, ranging in size from 2.26 acres to 10.59 acres. Enjoy country living and the serenity of these lots, while just 10 minutes from downtown Plant City, 15 minutes from Brandon, 25 minutes to Lakeland, and 35 minutes to Tampa.



[FischbachLandCompany.com/SpringheadRanchHomesites](https://FischbachLandCompany.com/SpringheadRanchHomesites)

## Property Highlights



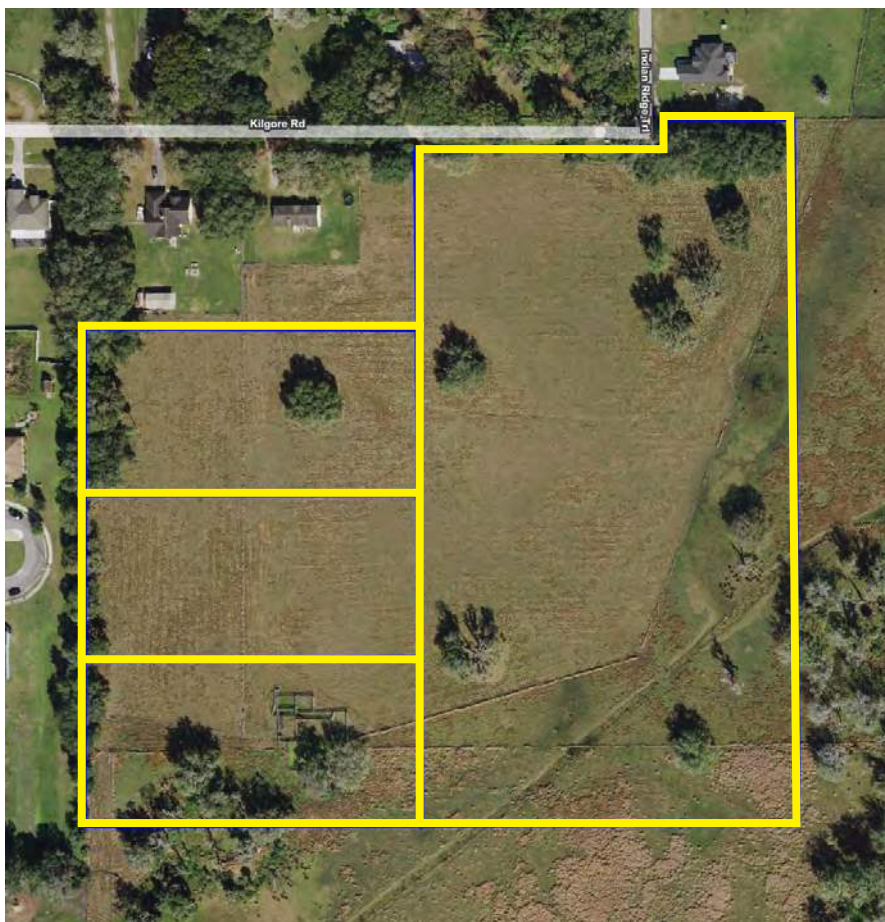
Private Homesites on  
Dead-end Road



15 Minutes to I-4 and  
5 Minutes to SR 60

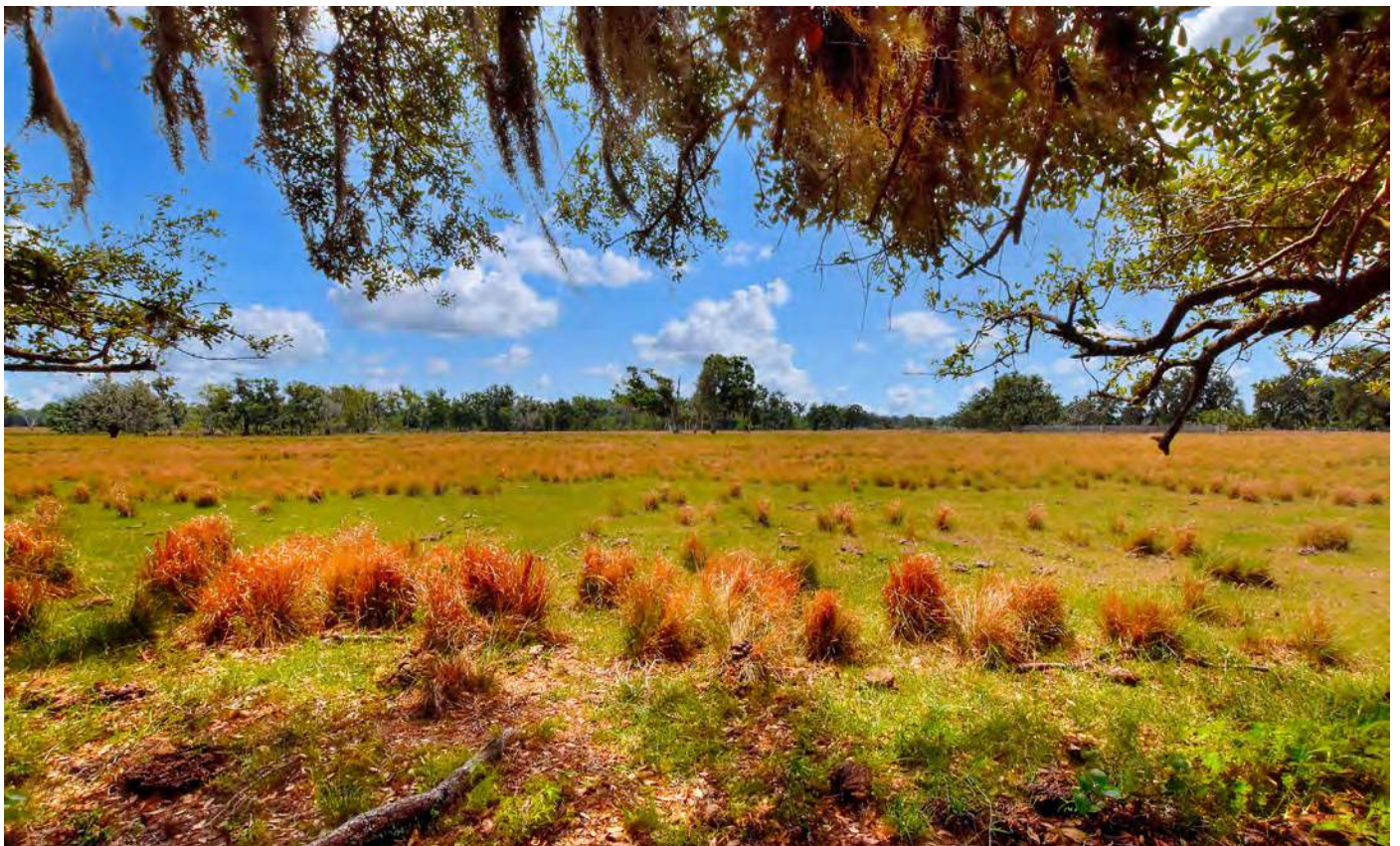
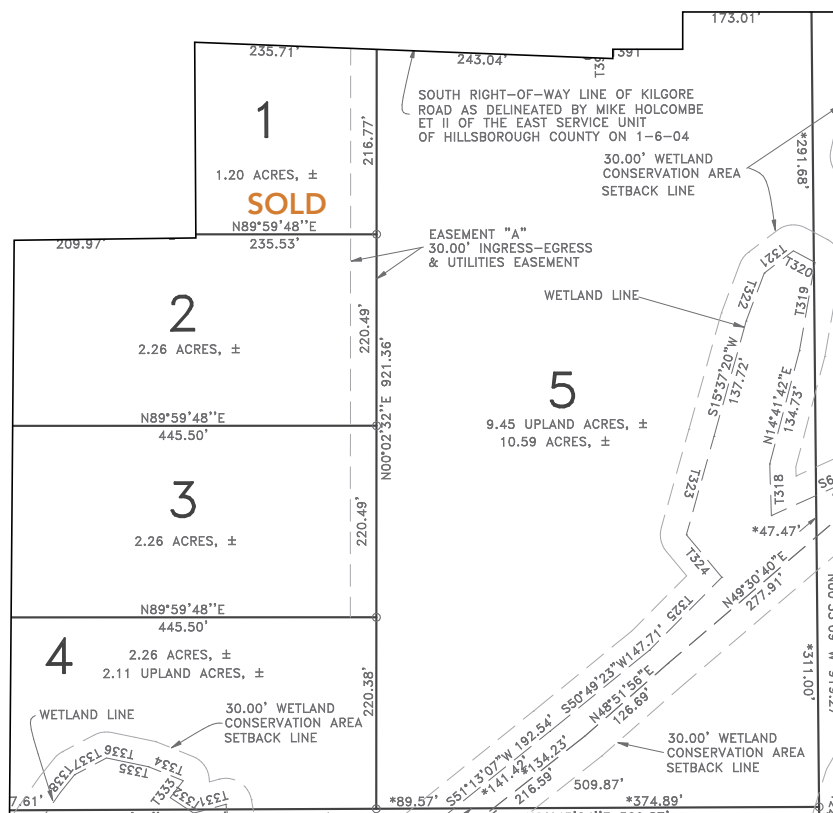


Conveniently Located to  
Amenities with Country  
Surroundings



|                         |   |
|-------------------------|---|
| <b>Property Address</b> | 0 Kilgore Road, Plant City, FL 33567    |
| <b>Property Type</b>    | Homesite Lots                           |
| <b>Size</b>             | 2.26± - 10.59± Acres                    |
| <b>Zoning</b>           | AS-1                                    |
| <b>Future Land Use</b>  | R-1                                     |
| <b>Price</b>            | Lots 2-4: \$200,000<br>Lot 5: \$600,000 |
| <b>County</b>           | Hillsborough                            |
| <b>STR:</b>             | 16-29-22                                |

# Photos



## Lots 2-4:

Acreage:  
2.26± Acres Each Parcel

Price:  
\$200,000 Each Parcel

Road Frontage:  
30 foot Easement



# Photos

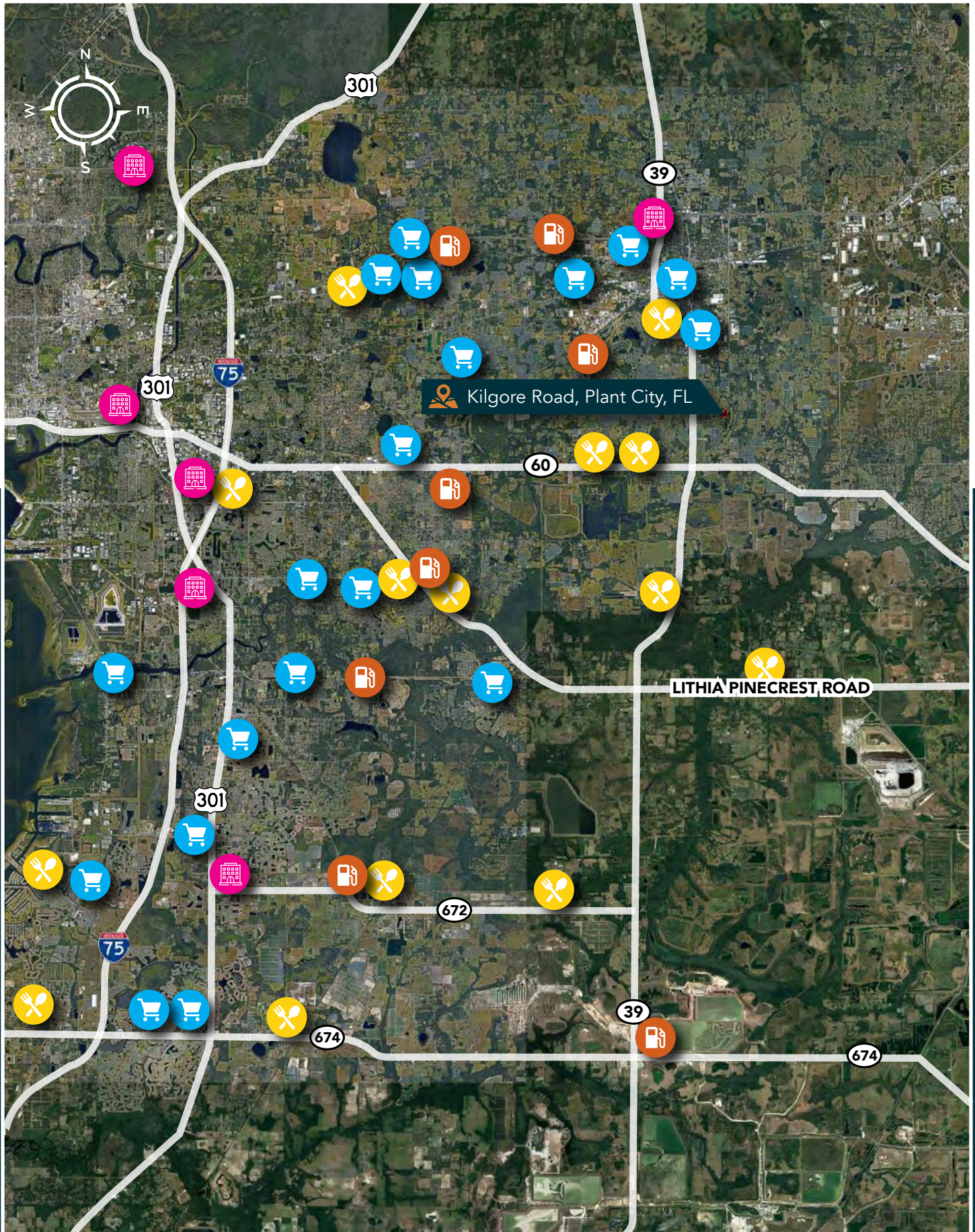
## Lot 5:

Acreage: 10.59± Acres

Price: \$600,000

Road Frontage:  
328 feet on Kilgore Road



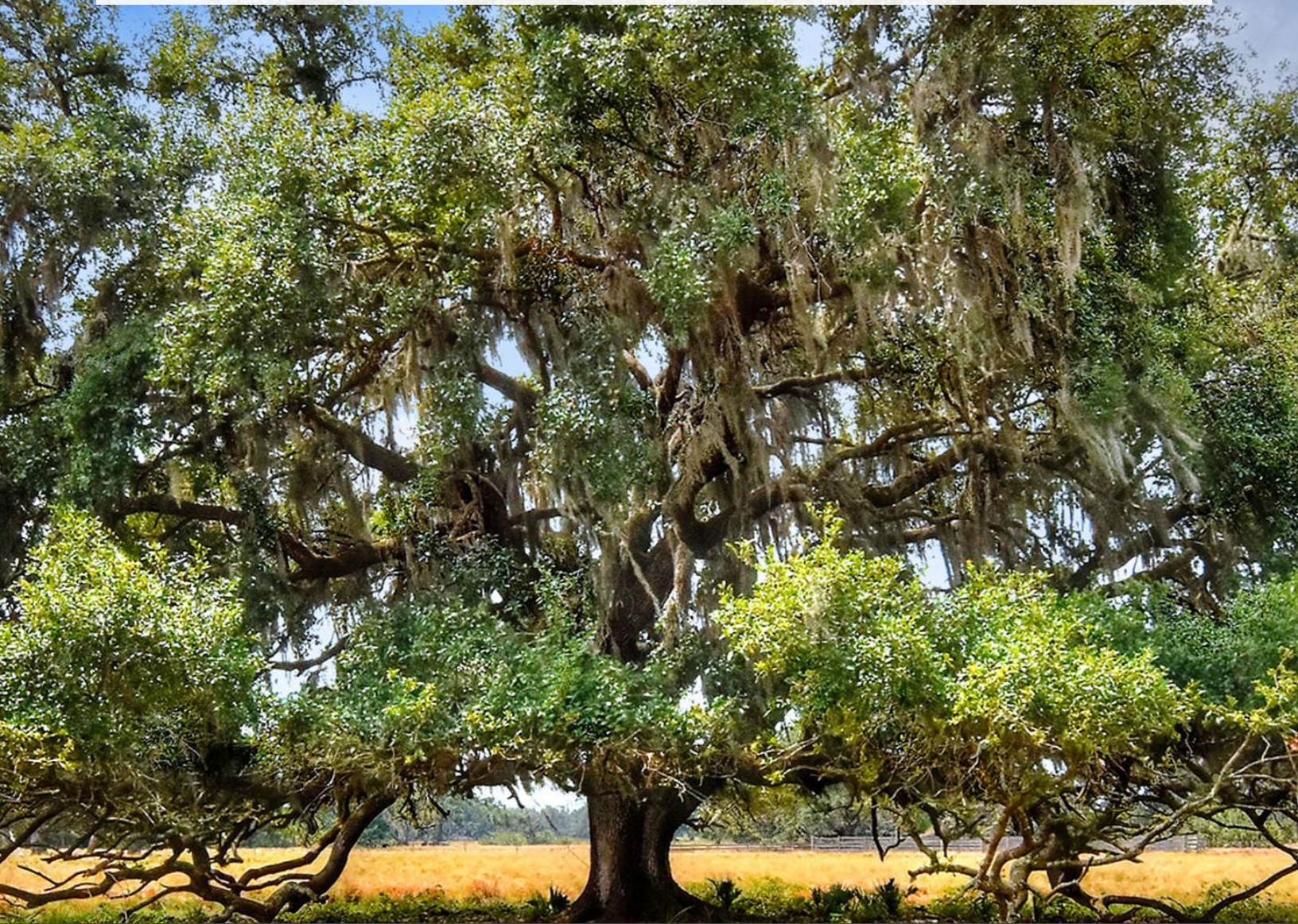


# **Fischbach** **LAND COMPANY**

FISCHBACH LAND COMPANY

917 S PARSONS AVENUE, BRANDON, FL 33511

PHONE: 813-540-1000



**REED FISCHBACH** | Broker  
[reed@fischbachlandcompany.com](mailto:reed@fischbachlandcompany.com)



**BLAISE LELAULU, CCIM** | Agent  
[blaise@fischbachlandcompany.com](mailto:blaise@fischbachlandcompany.com)