



**Hawkeye
Farm Mgmt &
Real Estate**



Investment Property with CRP, Recreation & Hunting

505th Avenue, Lovilia, IA 50138

255 +/- Acres

\$1,402,500

CONTACT US



**Hawkeye
Farm Mgmt &
Real Estate**



(641) 932-7796



Hawkeye@UCIowa.com



www.UCIowa.com



1010 S Clinton
Albia, IA 52531



RYAN AMMONS

(641) 777- 2955

Ryan@UCIowa.com



NATE AMMONS

(641) 777-2861

Nate@UCIowa.com

Alan Ammons, Broker, Licensed in Iowa & Missouri. All Agents Licensed in Iowa. The above information, although believed to be accurate, is not warranted or guaranteed by the owner, listing firm, or listing agent.

PROPERTY DESCRIPTION



Iowa Investment Property with Income Producing Ag Land, CRP Land and Exceptional Recreational and Hunting Use.

This **Monroe County, Iowa 255 +/- acre** combination farm is located near the borders of Lucas and Marion Counties offering a combination of productive ag land currently seeded to alfalfa/hay, native grass CRP with timbered fingers & draws bisecting the farm.

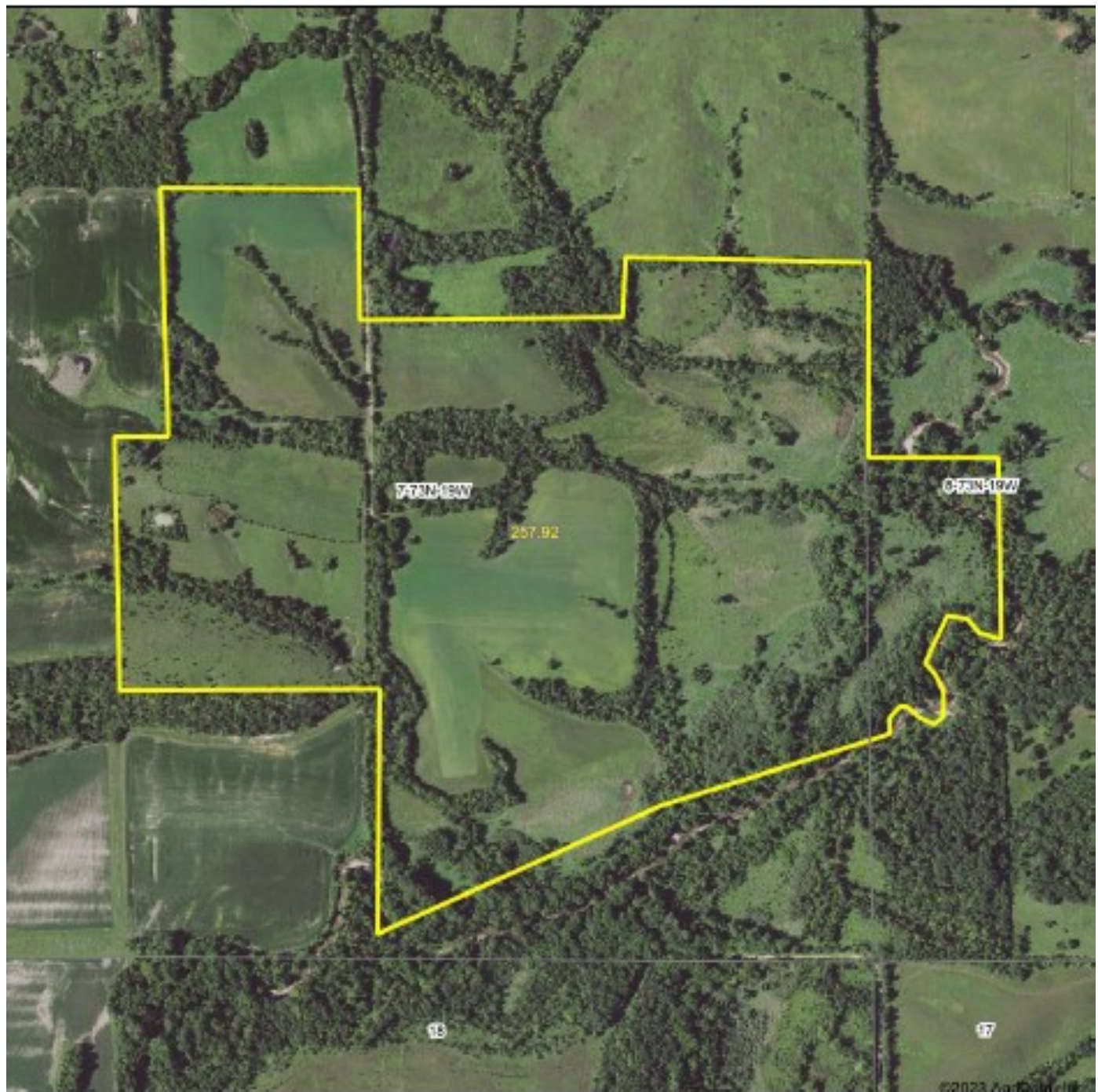
Approximately **70% of this farm is income producing** with **80 acres in CRP** with an annual payment of **\$12,181 on 2 contracts** expiring in 2025 and 2034. The additional income comes from 100+/- open crop acres carrying a 47 CSR2, a majority being alfalfa with grass hay and modest pasture acres.

This property lays in an area that produces true **world-class hunting opportunities** and is set up with solid access to multiple natural funnels across the farm. Timbered draws break up the farm perfectly and offer several smaller fields along with larger fields, all of which create major travel corridors and offer edge habitat for hunting multiple winds all season long. There are **multiple locations to convert to food plots**, which would put this farm over the top. With a large section of Stephens State Forest to the south, the private and secluded location of this farm, in the middle of a large section of contiguous acres makes for a stout population of whitetail, turkey, and small game. Iowa combination farms that offer both a **solid return from sustainable income** and **true long-term trophy hunting potential** are hard to find and this one offers all that and much more.

KEY FEATURES

- **\$3,918 Annual Tax on 255 Tax Acres**
- **Predominate Soils: Lawson-Quiver-Nodaway, Pershing, Douds, and Vesser**
- **180+/- Open Acres with a 55.5 CSR2**
 - * **100 +/- Open Alfalfa/Hay (47.2 CSR2)**
 - * **80 +/- CRP Acres Earning \$12,181 Annually**
 - * **CRP Contracts Expire 9/30/2025 and 9/30/2024**
- **Located approx. 10 miles West of Lovilia and approx. 20 miles Northwest of Albia**
- **Rolling terrain with ridges and bottomland of alfalfa, hay, CRP, and timber draws.**
- **Borders State of Iowa Owned Public Hunting Land**

AERIAL MAP



Hawkeye Farm Mgmt & Real Estate



315 N. Main, Suite 100 - Monroe, IA 50654-1700
Phone: 562-888-1700
Fax: 562-888-1700
www.hawkeyefarm.com

Boundary Center: 41° 8' 16.14, -93° 5' 10.11

0ft 814ft 1629ft

7-73N-19W
Monroe County
Iowa



Maps Provided By
surety®
© AgriData, Inc. 2021 www.Agridata.com

PLAT MAP



T-73-N

CEDAR PLAT

R-19-W

(Landowners)
MARION CO

