

90± ACRES | BEE COUNTY, TEXAS

STUNNING RANCH RETREAT JUST OUTSIDE OF BEEVILLE



COLDWELL BANKER

D'ANN HARPER, REALTORS®
LAND & RANCH

Finding You

THE PERFECT PLACE TO HANG YOUR HAT

210.483.7500 • TexasLandAndRanch.com



STUNNING RANCH RETREAT JUST OUTSIDE OF BEEVILLE

90± ACRES | BEE COUNTY, TX

Welcome to your secluded sanctuary in the heart of Beeville, Texas. Nestled on 90 +/- acres of breathtaking landscape, this brand-new ranch-style home offers the perfect blend of tranquility, convenience, and natural beauty. Designed and built by J and J Custom Homes, this 2,038 sq. ft. masterpiece is waiting for you to make it your own.

As you step inside, you'll be greeted by an open and spacious living and dining area with vaulted ceilings, creating a sense of grandeur and comfort. The kitchen is a chef's delight, featuring modern stainless-steel appliances, including a glass top electric range, microwave vent hood, disposal, and a pantry pot scrubber dishwasher. This custom ranch home offers four bedrooms / 2.5 baths, including a primary suite with a coffered ceiling, adding a touch of elegance and sophistication. The remaining bedrooms feature flat ceilings, providing a versatile space that can be transformed to suit your needs. Throughout the home, stained concrete flooring from the builder's selection adds a touch of style and easy maintenance.

Step outside onto the 316 sq. ft. front porch and embrace the peace and serenity of your surroundings. Whether you prefer sipping your morning coffee while watching the sunrise or enjoying an evening breeze, this front porch is the perfect spot to unwind and connect with nature. The 307 sq. ft. back covered patio offers additional space for relaxation and entertaining, providing a seamless transition between indoor and outdoor living. The property boasts a 693 sq. ft. three-car attached garage, giving you plenty of room for vehicles, storage, and hobbies. With underground power and a well for water supply, you can enjoy uninterrupted service and self-sufficiency.

The location of this property is truly remarkable. Just on the outskirts of town, you'll experience the tranquility of country living while being within easy reach of amenities. The property's ag exemption ensures favorable property tax rates, making it an even more attractive investment. Immerse yourself in the natural beauty of the area, as this property is surrounded by great brush, providing an idyllic landscape and a habitat for wildlife. Deer, turkeys, doves, and hogs roam freely, offering a unique opportunity to observe and connect with nature right from your own backyard. An excellent opportunity for hunters as well. Don't miss the chance to own this exceptional ranch home in Beeville, Texas. Schedule a viewing today and let this property become your own private haven. Experience the luxury, serenity, and natural beauty that this home offers, and embrace the charm of Texas living.

90± ACRES

2,000± SQ. FT. 4 BEDROOM/ 2.5 BATH HOME

WATER WELL

UNDERGROUND POWER

GREAT BRUSH FOR WILDLIFE

AG EXEMPT FOR LOW TAXES

TONS OF WILDLIFE INCLUDING DEER, TURKEY, DOVE, AND HOGS

2 MILES FROM BEEVILLE

50 MILES FROM CORPUS CHRISTI

80 MILES FROM SAN ANTONIO

52 MILES FROM VICTORIA

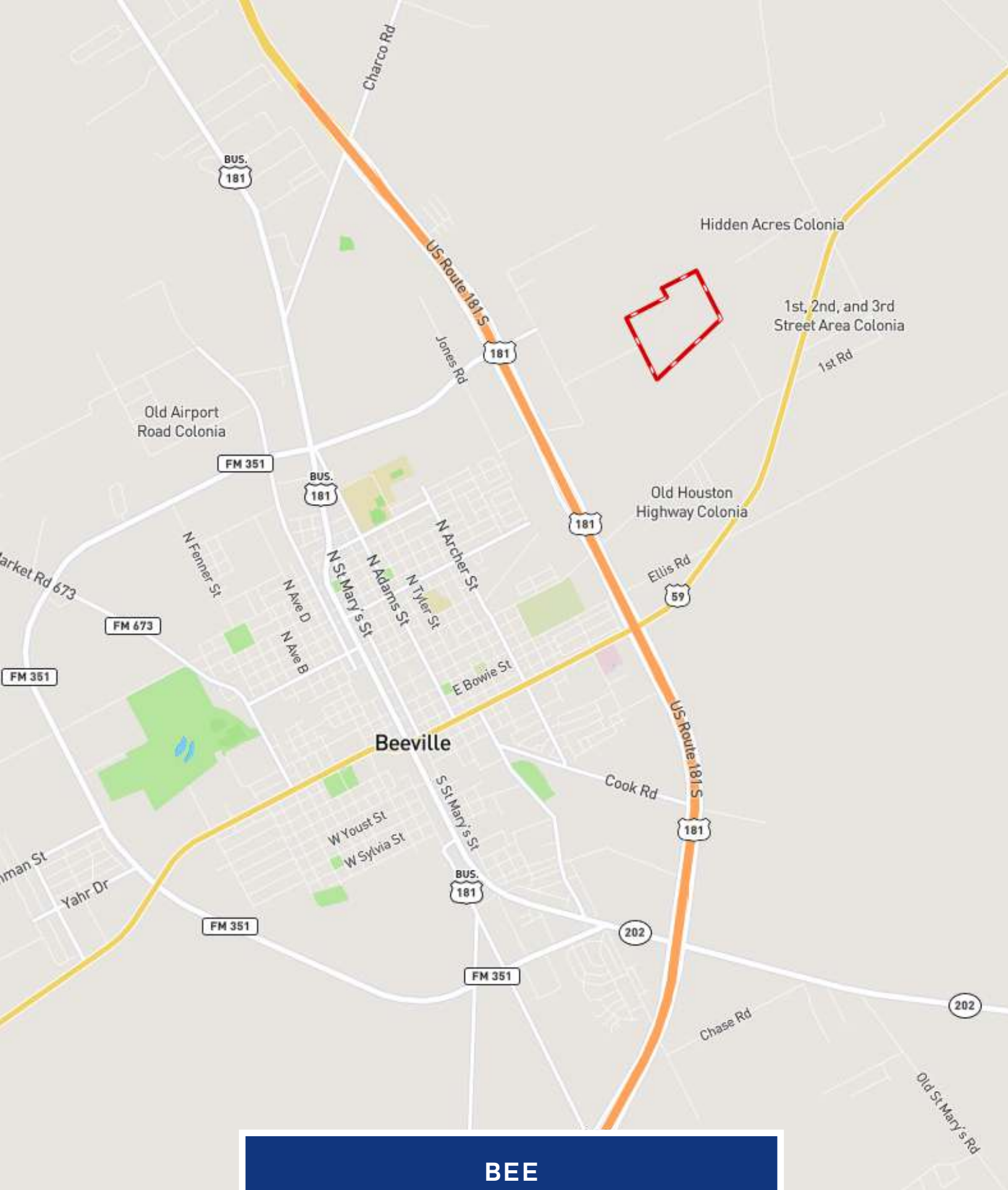








90±
ACRES



BEE COUNTY



GAINES SLADE

VICE PRESIDENT OF LAND & RANCH
LAND SPECIALIST

GAINES.SLADE@CBHARPER.COM

830.469.3022



**COLDWELL
BANKER**

D'ANN HARPER, REALTORS®
LAND & RANCH