



**T R O P H Y**  
PROPERTIES AND AUCTION  
LAND | RECREATIONAL | RESIDENTIAL

# Log Cabin Home on 10± Acres for Sale - Bond County

www.TrophyPA.com • (855) 573-5263 • leads@trophyapa.com



**PRICE IMPROVED**

## PROPERTY ADDRESS:

1888 Hopewell Avenue  
Donnellson, IL 62019

**PRICE:** \$509,900

**ACRES:** 10

**COUNTY:** Bond

## PROPERTY HIGHLIGHTS:

- Amazing Log Cabin Home
- New Roof, Windows, Furnace/AC, and Outdoor Wood Burner
- Dead End Road
- All Timber Acreage
- 30 x 50 Outbuilding with Heat/AC and Bathroom
- Deer and Turkey Hunting out your Back-door
- Additional Acreage Available
- Just Over an Hour from St. Louis

## PROPERTY DESCRIPTION:

This is truly a one of a kind property!! This log cabin home is being sold with 10 acres of timber ground that has plenty of deer and turkeys to hunt or watch right out your back door!!

It is a 3 bedroom 3 full bath house that features a covered front porch and a 30 x 50 climate controlled outbuilding with an additional bathroom!! If you are looking for a place to escape to peace and quiet for the weekends or a forever home do not miss this opportunity!!

There is plenty of room to add a good sized pond or lake behind the house or just walk the well manicured paths that are already there!! This place has been meticulously cared for and the roof, Furnace/AC, windows, and outdoor wood burner have all been updated within the past year!! There is new metal for the garage roof that will convey with sale.

Being just over an hour from St. Louis, and about 4 hours from Chicago it offers the perfect spot to escape from the hustle of city life and recharge!! A survey will be completed by the seller prior to close and additional acreage may be available.



**PRESENTED BY:**

**SCOTT ATHMER**

**Land & Home Specialist - IL**

M: (618) 830-6192

P: (855) 573-5263 x739

E: sathmer@trophyapa.com

**Trophy Properties and Auction**

15480 Clayton Road

Suite 101

Ballwin, MO 63011

www.Trophyapa.com

leads@trophyapa.com

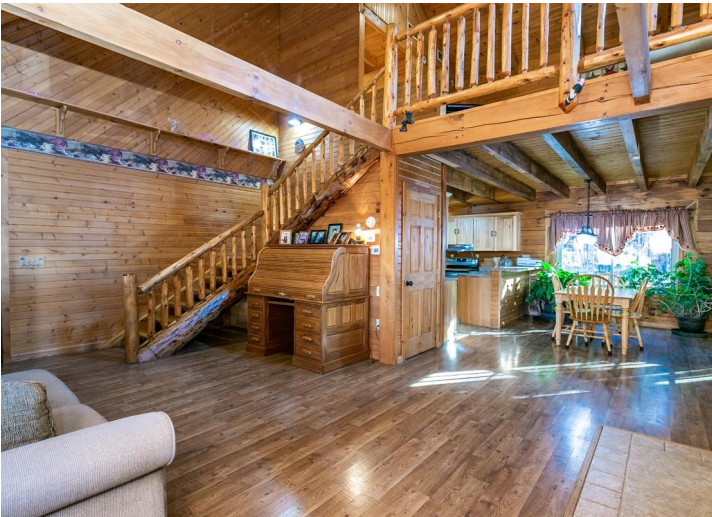




# Log Cabin Home on 10± Acres for Sale - Bond County

**T R O P H Y**  
PROPERTIES AND AUCTION  
LAND | RECREATIONAL | RESIDENTIAL

[www.TrophyPA.com](http://www.TrophyPA.com) • (855) 573-5263 • [leads@trophyPA.com](mailto:leads@trophyPA.com)



Broker

does not guarantee the accuracy of sq. ft., lot size, or other information, buyer is advised to independently verify the accuracy of information through personal inspection





**T R O P H Y**  
PROPERTIES AND AUCTION  
LAND | RECREATIONAL | RESIDENTIAL

# Log Cabin Home on 10± Acres for Sale - Bond County

[www.TrophyPA.com](http://www.TrophyPA.com) • (855) 573-5263 • [leads@trophy.com](mailto:leads@trophy.com)



Broker does not guarantee the accuracy of sq. ft., lot size, or other information, buyer is advised to independently verify the accuracy of information through personal inspection and with appropriate professionals