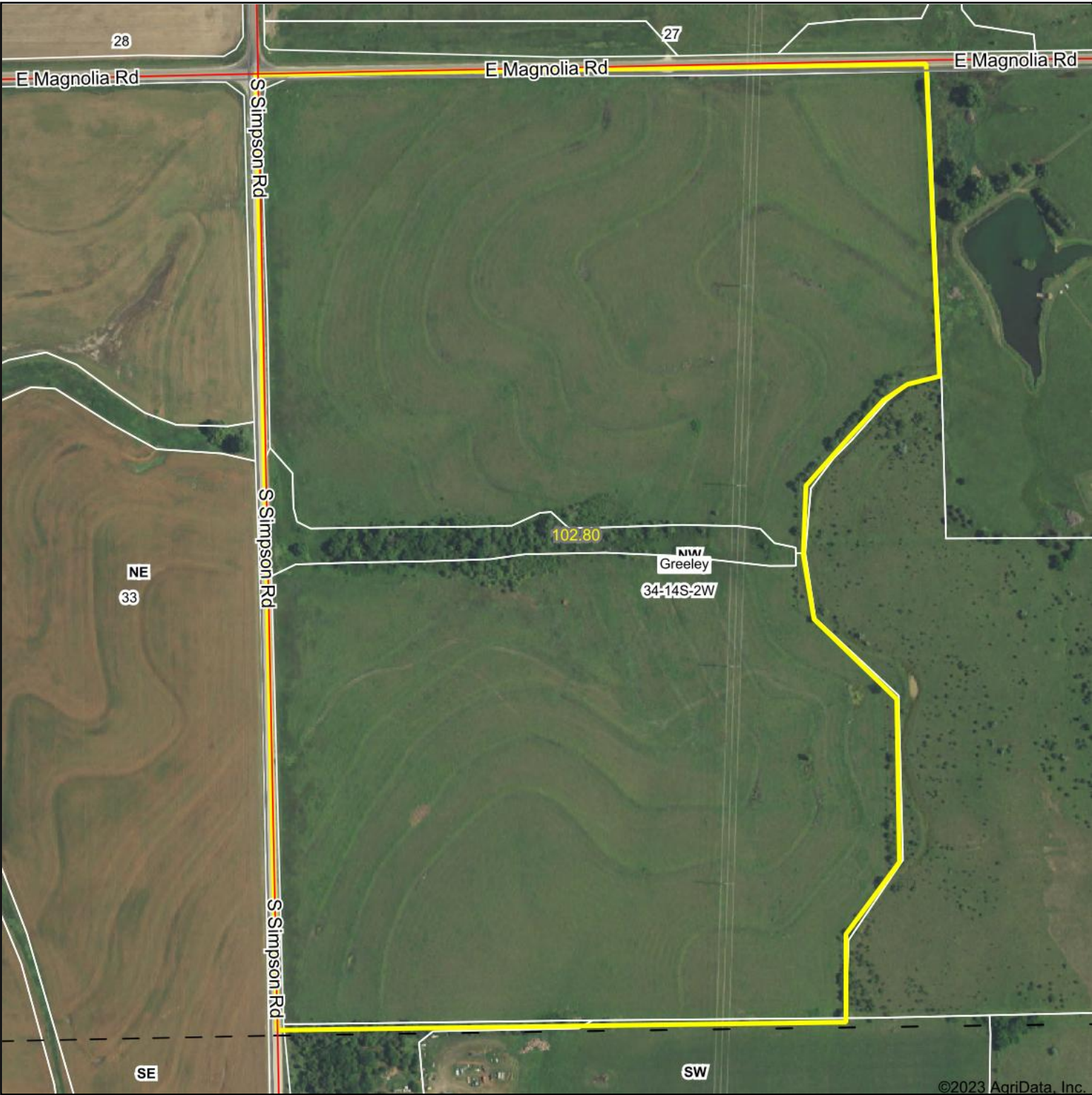



Aerial Map



©2023 AgriData, Inc.




COLDWELL BANKER
APW REALTORS®

Boundary Center: 38° 47' 40.6, -97° 32' 8.59


34-14S-2W
Saline County
Kansas

0ft 430ft 860ft



7/6/2023

Maps Provided By:



surety®
CUSTOMIZED ONLINE MAPPING

© AgriData, Inc. 2023 www.AgriDataInc.com

Field borders provided by Farm Service Agency as of 5/21/2008