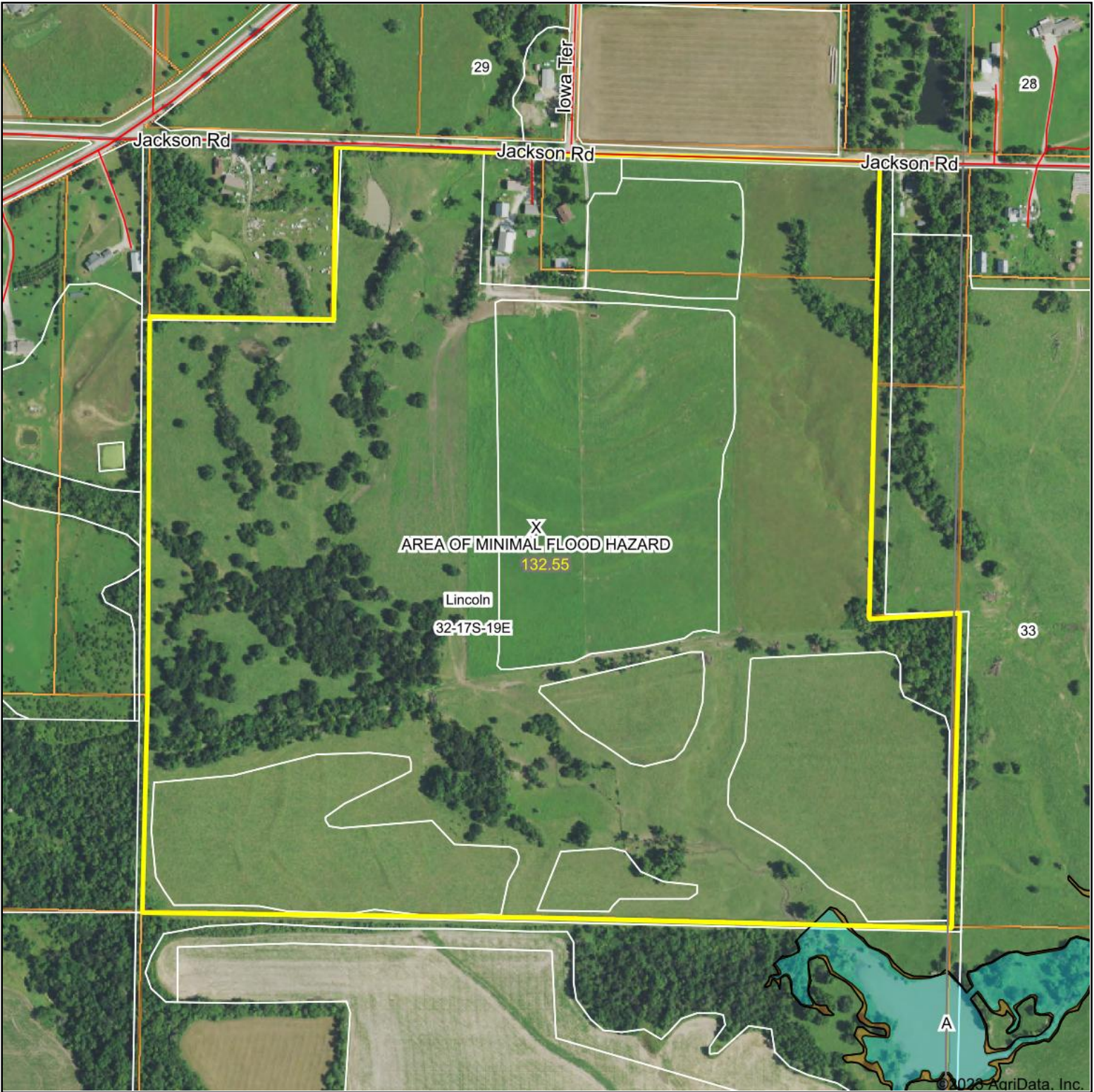


Aerial Map



Boundary Center: 38° 31' 55.72, -95° 19' 40.48

0ft 504ft 1008ft

32-17S-19E
Franklin County
Kansas



Maps Provided By:



© AgriData, Inc. 2023 www.AgriDataInc.com

7/17/2023

Field borders provided by Farm Service Agency as of 5/21/2008. Flood related information provided by FEMA