

HOME FOR SALE



405 W RAILROAD ST
MULLEN, NEBRASKA

Spacious stucco home - Newly Remodeled!
With large detached Shop/Garage

LOCATION:

On the North West side of Mullen, Nebraska, between Railroad and Burlington Streets. Located near Mullen City Park and near downtown Mullen.

LEGAL DESCRIPTION:

W 75' Lot 6; E 25' Lot 7 Lowes, Hooker County, Nebraska

UTILITIES:

Connected to City water and sewer. Has an electric water heater and propane fired boiler/radiator heat with window a/c unit. Estimated 675 gallons of propane, water, sewer, trash = \$150/month.

PRICE:

~~\$98,500~~ **PRICE REDUCED \$97,500!**

View Full Brochure
& Listing



Offered exclusively by:

AGRI AFFILIATES, INC.
Providing Farm - Ranch Real Estate Services

North Platte, NE • AgriAffiliates.com • 308.534.9240



Information contained herein was obtained from sources deemed reliable. We have no reason to doubt the accuracy, but the information is not guaranteed. Prospective Buyers should verify all information. All maps provided by Agri Affiliates, Inc. are approximations only, to be used as a general guideline, and not intended as survey accurate. As with any agricultural land, this property may include noxious weeds. Agri Affiliates, Inc. and all agents are acting as Agent of the Seller.



AGRI AFFILIATES, INC.
Providing Farm - Ranch Real Estate Services

NEWLY REMODELED

*Open concept Kitchen - Dining - Living
with Laundry just off the Dining*



**REFRIGERATOR, DISHWASHER, AND STOVE SELL
WITH THE PROPERTY.**

**MAIN FLOOR BEDROOM
11' 2" X 14' 8"**

- 34 SQ FT CLOSET
- ENTRANCE TO THE MAIN BATH



Dave Masek

LISTING AGENT:

DAVE MASEK

P: 308.539.5670

E: dmasek@agriaffiliates.com

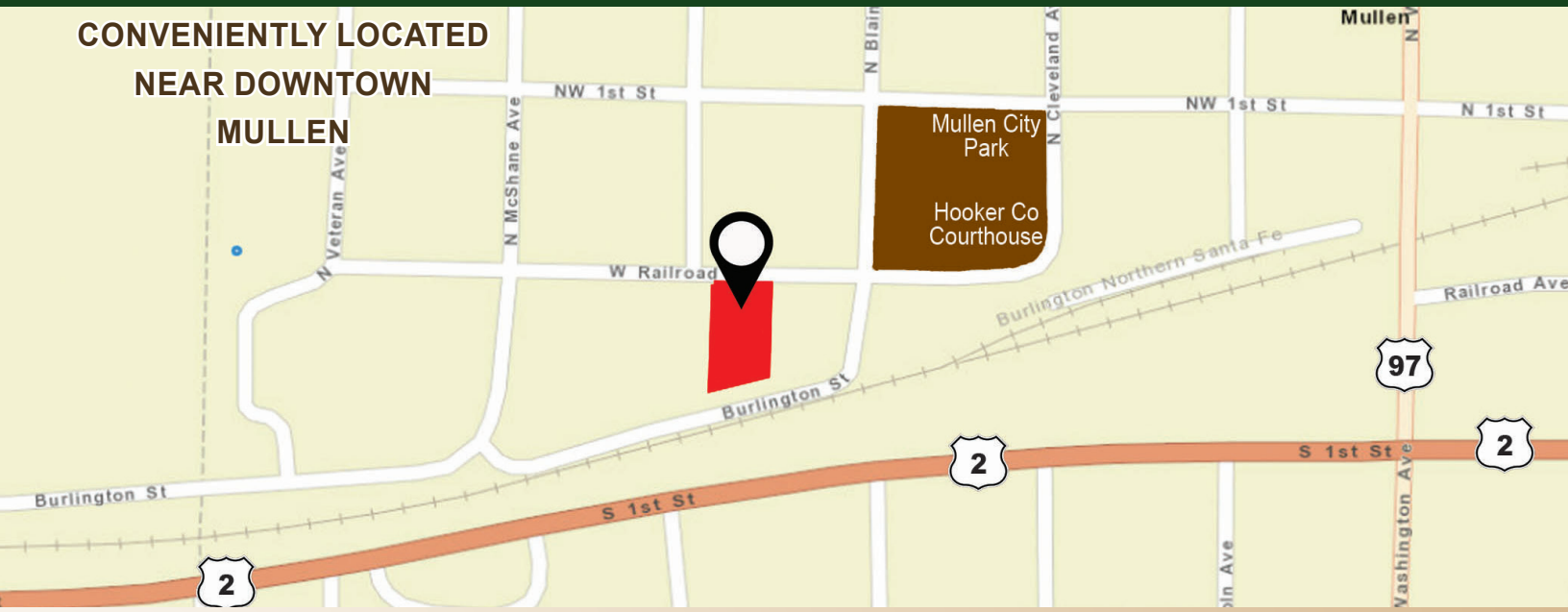
*Don Walker, Dallas Dodson, Mike Polk, Bonnie Downing, Bruce Dodson,
Chase Dodson, Brad Atkins, Jerry Weaver, Roger Luehrs*

AGRIAFFILIATES.COM



AGRI AFFILIATES, INC.
Providing Farm - Ranch Real Estate Services

**CONVENIENTLY LOCATED
NEAR DOWNTOWN**



DETACHED GARAGE/ SHOP 26' X 58'

- 3 OVERHEAD DOORS
- 2 WALK-THRU DOORS
- CONCRETE FLOORS
- 110 VOLT ELECTRICITY
- RECENTLY UPDATED ROOF

**THIS SPACIOUS HOME HAS
A FULL BASEMENT WITH
5 PARTIALLY FINISHED ROOMS**

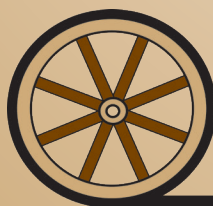
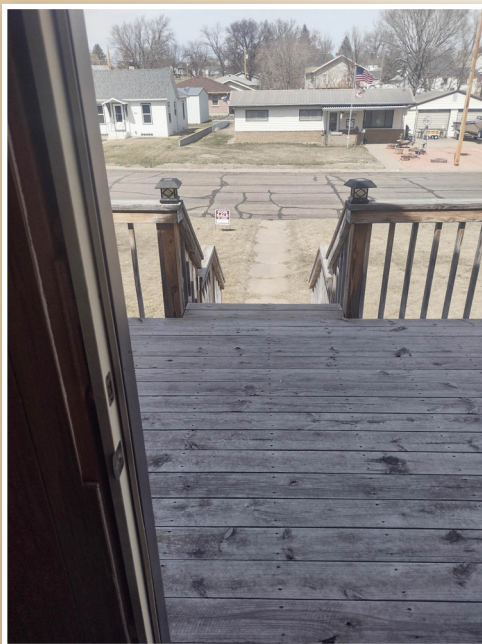
**- PERFECT FOR IN-HOME OFFICE,
PLAY ROOMS, WEIGHT ROOMS, ETC...**





RECENTLY UPDATED SHINGLES, GUTTERS, AND WINDOWS.

Large front porch with main entry



AGRI AFFILIATES, INC.
Providing Farm - Ranch Real Estate Services

North Platte, Nebraska | 308.534.9240 | AgriAffiliates.com