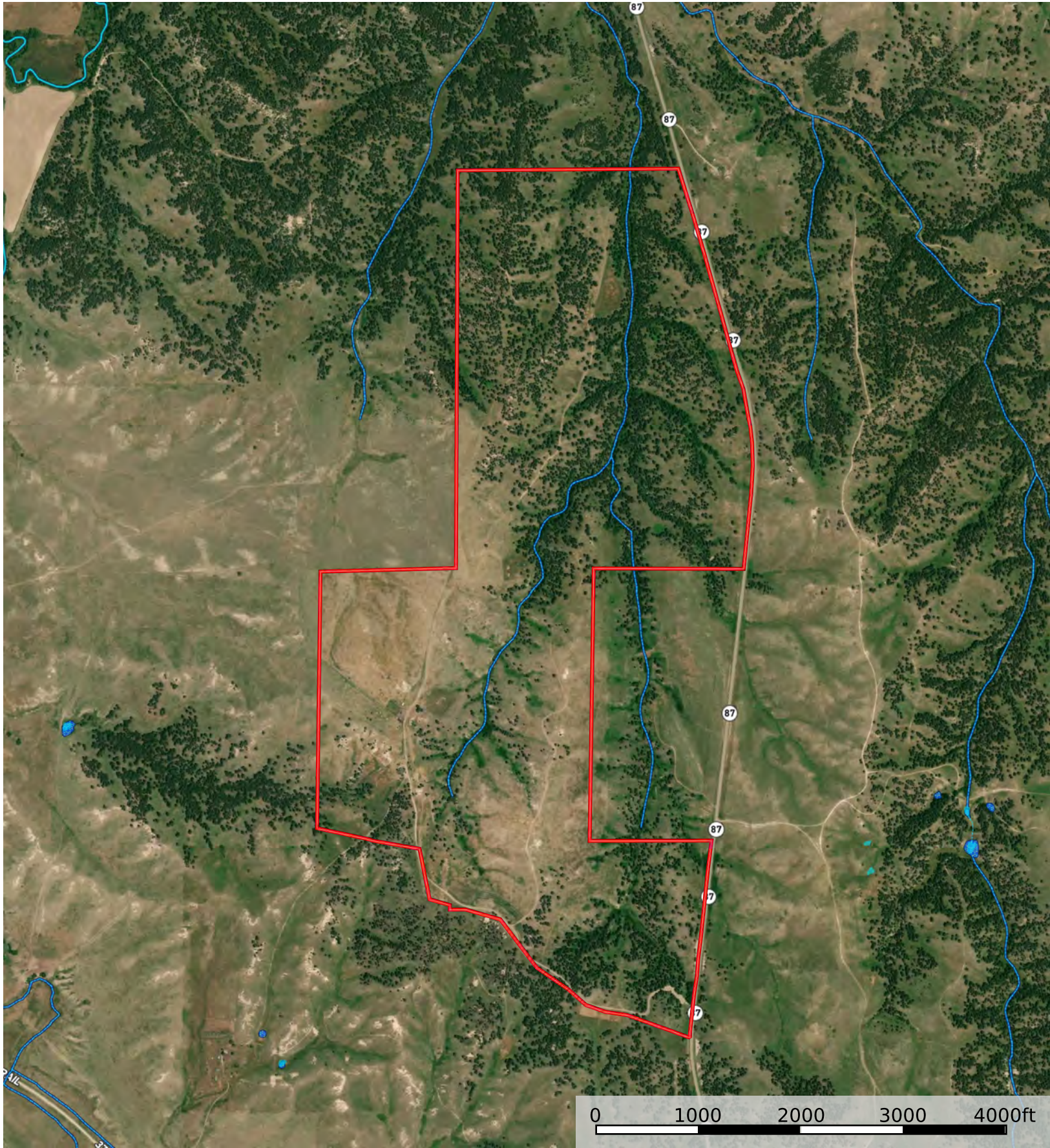
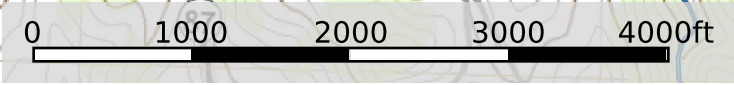
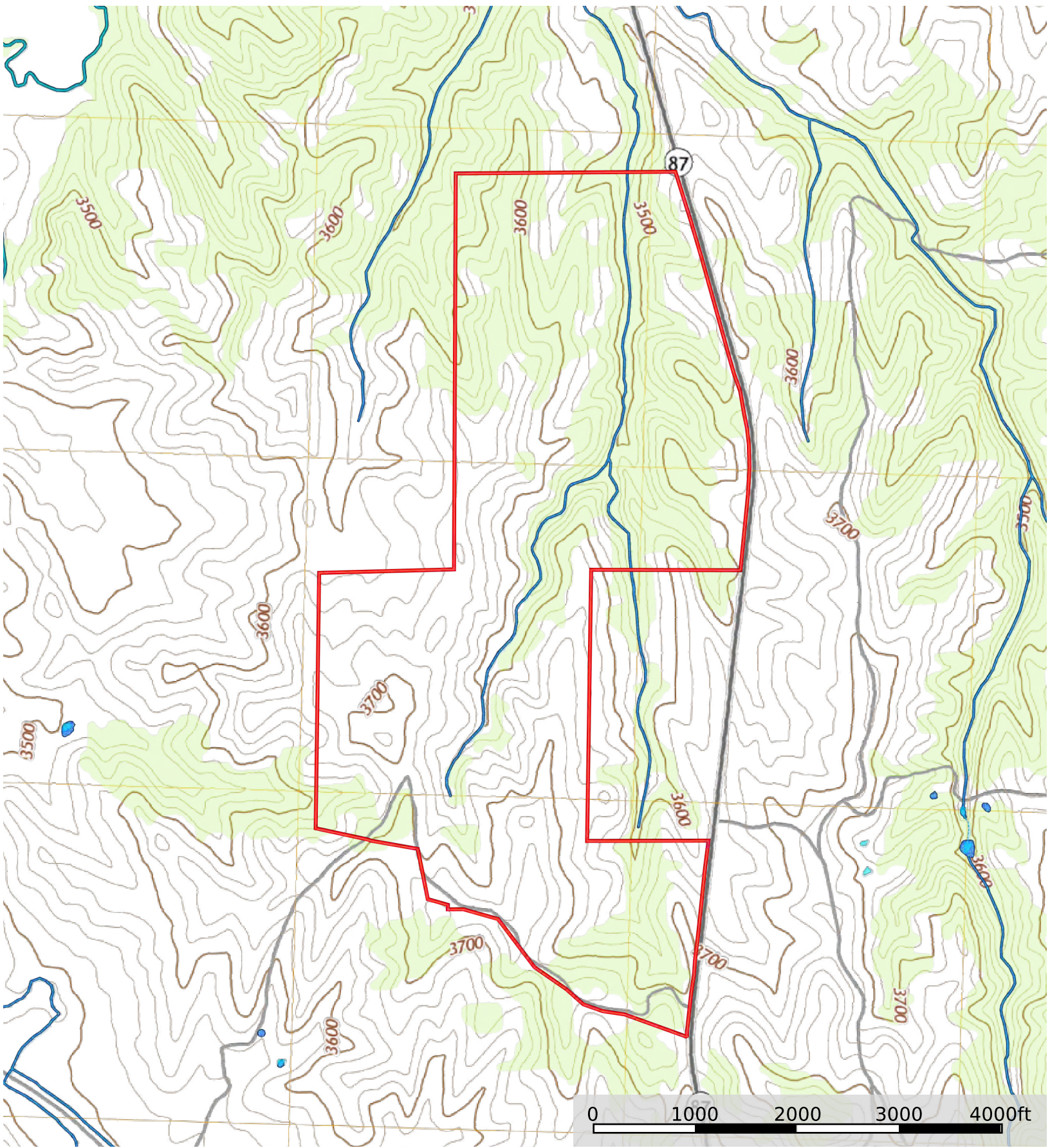
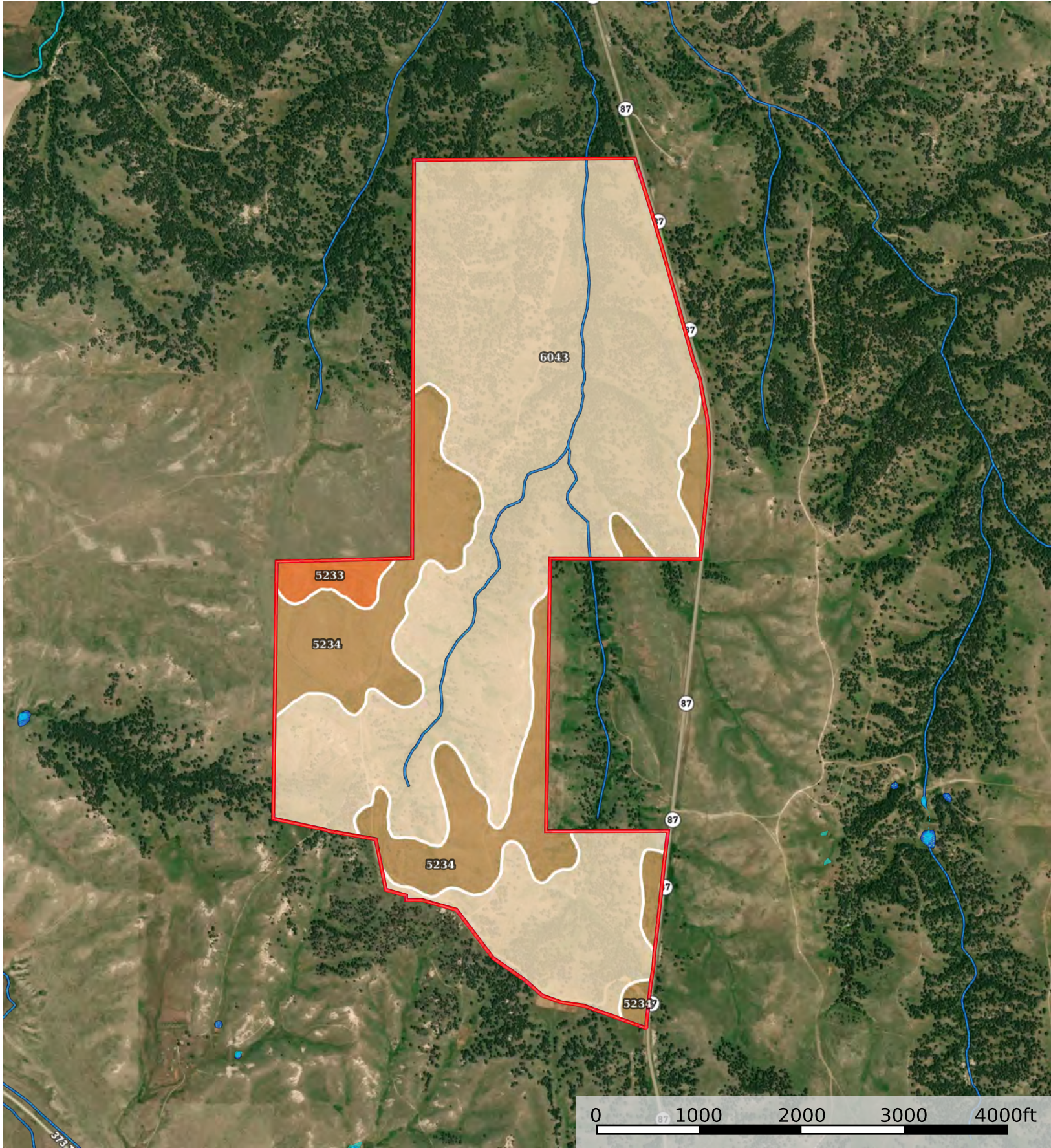


- Feeder
- Photo Point
- Pens
- Gate
- Windmill
- Water Storage Tank
- Fence
- Boundary
- Wetlands
- Riparian
- Stream, Intermittent
- River/Creek
- Water Body





- Boundary
- Wetlands
- Riparian
- Stream, Intermittent
- River/Creek
- Water Body



- Boundary
- Wetlands
- Riparian
- Stream, Intermittent
- River/Creek
- Water Body

Boundary 479.63 ac

SOIL CODE	SOIL DESCRIPTION	ACRES	%	CPI	NCCPI	CAP
6043	Tassel-Ponderosa-Rock outcrop association, 9 to 70 percent slopes	363.3 9	75.76	11	14	6e
5234	Ponderosa-Tassel-Vetal complex, 6 to 30 percent slopes	107.3 4	22.38	0	23	6e
5233	Ponderosa very fine sandy loam, 6 to 9 percent slopes	8.9	1.86	0	37	4e
TOTALS		479.6 3(*)	100%	8.33	16.44	5.96









(*) Total acres may differ in the second decimal compared to the sum of each acreage soil. This is due to a round error because we only show the acres of each soil with two decimal.

Capability Legend

Increased Limitations and Hazards

Decreased Adaptability and Freedom of Choice Users

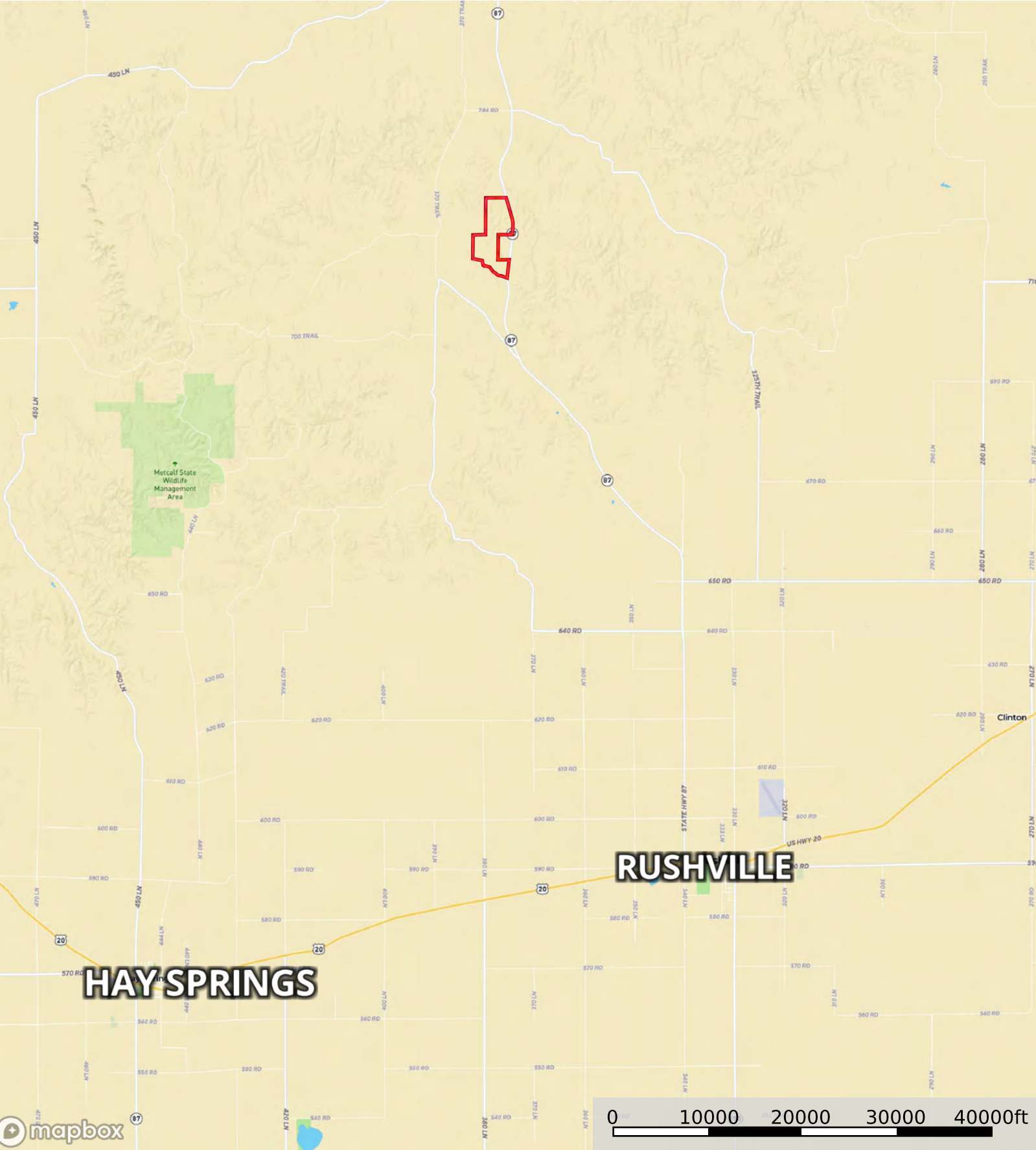
Land, Capability


								
	1	2	3	4	5	6	7	8
'Wild Life'	•	•	•	•	•	•	•	•
Forestry	•	•	•	•	•	•	•	
Limited	•	•	•	•	•	•	•	
Moderate	•	•	•	•	•	•		
Intense	•	•	•	•	•			
Limited	•	•	•	•				
Moderate	•	•	•					
Intense	•	•						
Very Intense	•							

Grazing Cultivation

(c) climatic limitations (e) susceptibility to erosion

(s) soil limitations within the rooting zone (w) excess of water



 Boundary