

McCoy Dryland

309± TOTAL ACRES | KIMBALL COUNTY, NE

New Listing



For More Information, Contact:

Ben Gardiner, Salesperson
bgardiner@reckagri.com

Marc Reck, Broker
marcreck@reckagri.com

Overview: 274± tillable acres stripped into 29-39± ac fields, currently in wheat/fallow rotation. Easily accessible with county roads along north, south and west borders. Just minutes from Pine Bluffs and I-80.

Legal Description: W1/2 Sec 4, T13N-R58W

Acreage: 309.0± total acres; 274.0± ac dryland / 131.1± ac planted to wheat (142.9± ac fallowed)
Primarily Class III & IV soils

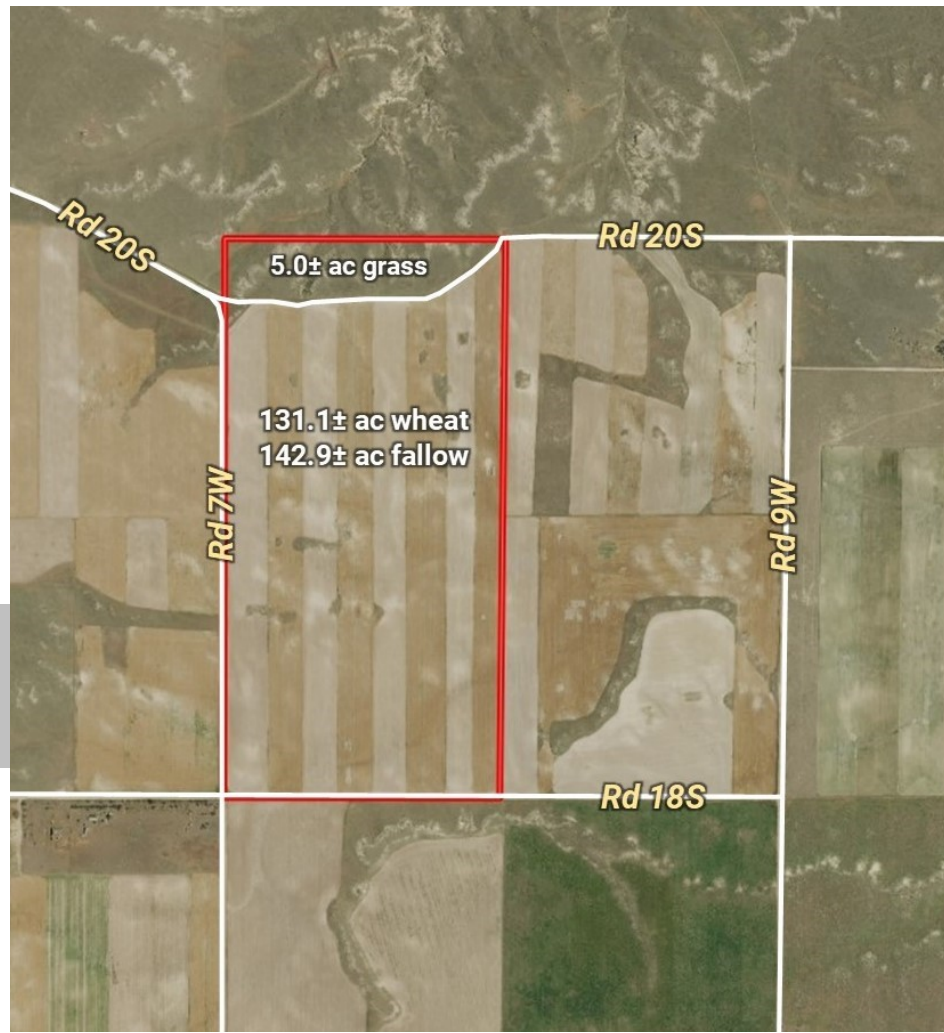
FSA Information: 156.5 ac wheat base @ 29 bu PLC yield

Seller to convey all OWNED mineral rights

RE Taxes: \$1,719.62± (2022)

Possession: Negotiable depending on time of year property sells

Asking Price: \$224,000



Office: 970.522.7770
Toll Free: 800.748.2589

PO Box 407, Sterling, CO 80751

ADDRESS SERVICE REQUESTED

Reck Means Results

We connect buyers and sellers of ag real estate like no one else can - and we have the reputation and relationships to prove it.

We are also known for getting the job done right. No matter what the situation, you can count on Reck Agri Realty & Auction to bring unmatched attention to detail, extensive market knowledge and a comprehensive strategy to every transaction.

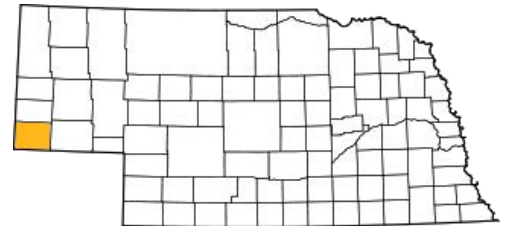


McCoy Dryland

KIMBALL COUNTY, NE

New Listing

KIMBALL COUNTY, NE



309± Total Acres

Half-section of dryland with 274± tillable acres located in western Kimball County, NE, approximately 5 miles southeast of Pine Bluffs, WY and Interstate 80.

