

361.35 ACRES M/L

WRIGHT COUNTY, IOWA

LAND AVAILABLE

BRYAN BERGDALE | 712.251.8588 | BRYAN@PEOPLES COMPANY.COM

STEVE BRUERE | 515.222.1347 | STEVE@PEOPLES COMPANY.COM



# WRIGHT COUNTY, IOWA

## LAND AVAILABLE

**Peoples Company** is honored to present an exceptional farm located just south of Dows in Wright County, Iowa. The farm consists of 361.35 acres m/l with 261.07 effective cropland acres carrying a CSR2 of 55.2. Currently 225 acres m/l are in row crop production. Primary soil types include Wadena loam and Talcot clay loam. Currently, 38.6 acres are enrolled in the Conservation Reserve Program (CRP). One contract includes 29.6 acres enrolled in CP23 & CP4D expiring in 2024 with an annual payment of \$4,427 (\$149.55/acre). Another includes 4.2 acres enrolled in CP21 expiring in 2023 with an annual payment of \$771 (\$183.54/acre). The








third contract includes 4.8 acres enrolled in CP21 expiring in 2052 with an annual payment of \$1,777 (\$370.23).

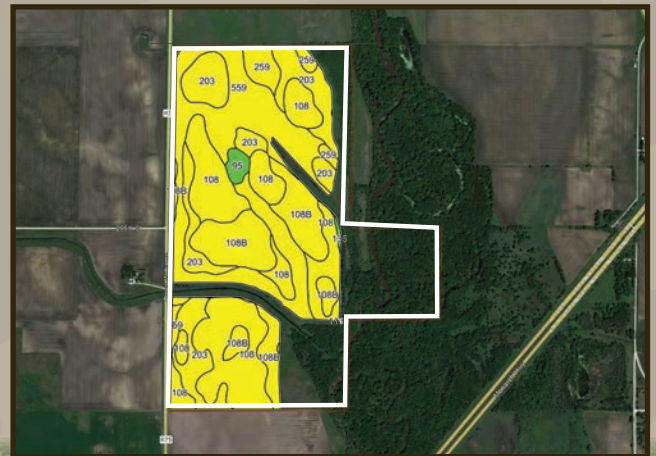
The farm is located just east of the intersection of Dows Williams and 295th Street. The property includes approximately 60 acres of timber and access to the Iowa River along the eastern border of the property. In addition to the exceptional deer and turkey hunting offered by the mature timber, the Iowa River is known for its healthy population of walleye, northern pike, catfish, smallmouth and largemouth bass. The farm is located in Vernon Township of Wright County, Iowa.

**Directions From Dows:** Travel south onto S Burrows St/Dows Williams for 2 miles. The farm lies on the east side of the road.

**Additional Info:** There is a hunting lease in place until June 30th, 2024.

### Tillable Soils Map

Code	Soil Description	Acres	% of Field	Legend	CSR2
108	Wadena loam	77.54	31.6%		56
559	Talcot clay loam	63.21	25.7%		54
203	Cylinder loam	46.80	19.1%		58
108B	Wadena loam	44.39	18.1%		52
259	Biscay clay loam	9.96	4.1%		52
95	Harps clay loam	3.08	1.3%		72
135	Coland clay loam	0.51	0.2%		76
<b>Weighted Average</b>					<b>55.2</b>



**BRYAN BERGDALE | 712.251.8588 | BRYAN@PEOPLES COMPANY.COM**

**STEVE BRUERE | 515.222.1347 | STEVE@PEOPLES COMPANY.COM**



# 361.35 ACRES M/L

**Asking Price:** \$2,258,438

**Price per Acre:** \$6,250

**Taxes:** \$6,702



All information, regardless of source, is deemed reliable but not guaranteed and should be independently verified. The information may not be used for any purpose other than to identify and analyze properties and services. The data contained herein is copyrighted by Peoples Company and is protected by all applicable copyright laws. Any dissemination of this information is in violation of copyright laws and is strictly prohibited.





12119 Stratford Drive  
Clive, IA 50325



PeoplesCompany.com  
Listing #16995

# WRIGHT COUNTY, IOWA

## LAND AVAILABLE

### CONTACT

**BRYAN BERGDALE**

712.251.8588 | IA LIC S65377000

BRYAN@PEOPLESCOMPANY.COM

**STEVE BRUERE**

515.222.1347 | IA LIC S43684000

STEVE@PEOPLESCOMPANY.COM

# 361.35 ACRES M/L

# WRIGHT COUNTY, IOWA

## LAND AVAILABLE

