

**Atchison County, MO Row Crop  
14347 State Hwy M.  
Westboro, MO 64498**



**TRACT 3: S19-T66N-R38W**

**Est. Price: \$12,000 / ac**

**Est. Total Acres: 197 +/- ac**

**Tillable: 185 +/- ac per EZ156**

**Est. Annual Tax: \$4.89 / ac**

**Windmill lease (Enel):**

**Exp. 2045: \$6,944 / est. annual income**

**Directions:**

14347 State Highway M Westboro, MO 64498

**Description:**

High quality, highly tillable farm located on blacktop M with excellent income.

Located within one mile of Tract 4 (319+/-ac)



Possession subject to tenant lease expiring Dec. 2025



**Enterprise Realty & Auction, LLC**

121 E. 4th St.

Maryville, MO 64468

Phone (660) 582-7160 Fax (660) 582-7162

property@entrealty.com www.entrealty.com



# Atchison County, MO Row Crop 14347 State Hwy M. Westboro, MO 64498

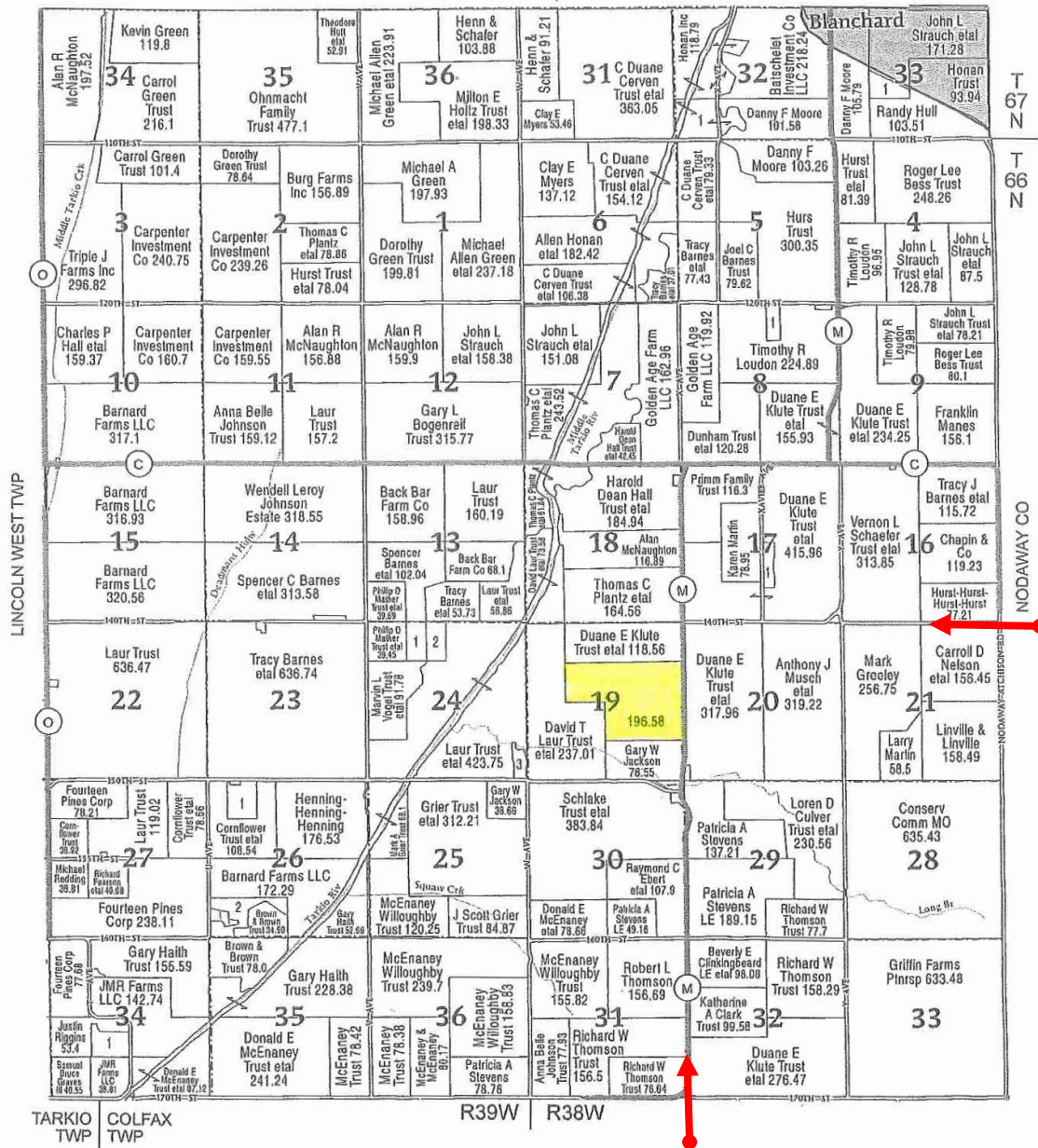
T3

T-66-67-N

LINCOLN EAST PLAT

R-38-39-W

(Landowners)  
PAGE CO, IA



140th St.

M Ave.



Enterprise Realty & Auction, LLC

121 E. 4th St.

Maryville, MO 64468

Phone (660) 582-7160 Fax (660) 582-7162

property@entrealty.com www.entrealty.com

# Atchison County, MO Row Crop 14347 State Hwy M. Westboro, MO 64498

T3



All Measurements are  
For FSA Programs Only

Wetland Determination Identifiers

- Restricted Use
- ▼ Limited Restrictions
- Exempt from Conservation Compliance Provisions

Disclaimer: Wetland identifiers do not represent the  
size, shape or specific determination of the area.  
Refer to your original determination (CEA-026 and attached maps)  
for exact wetland boundaries and determinations, or contact RECIS.

Atchison Co. FSA

C=CORN-YEL-GR; C/W=CORN-WHE-GR  
POP=CORN-POP-GR; SB=SOYBN-COM-GR  
WHT=WHEAT-HARD RED WINTER-GR  
P=MIXFG-IGS-GZ; HAY=MIXFG-IGS-FG  
GZ=GRASS-SMO-GZ; FG=GRASS-SMO-FG  
GLS=MIXFG-IGS-LS; BLS=GRASS-SMO-LS  
ALF=ALFAL-FG; I=Irrigated  
All fields non-irrigated  
\*Unless notated on Map

1 inch equals 539 feet

Program Year: 2023

Created: 11/16/2022

Flown: 2022-7-10

- clu
- crp
- plss

Farm 4301  
Tract 8024



**Enterprise Realty & Auction, LLC**

121 E. 4th St.

Maryville, MO 64468

Phone (660) 582-7160 Fax (660) 582-7162

property@entrealty.com www.entrealty.com