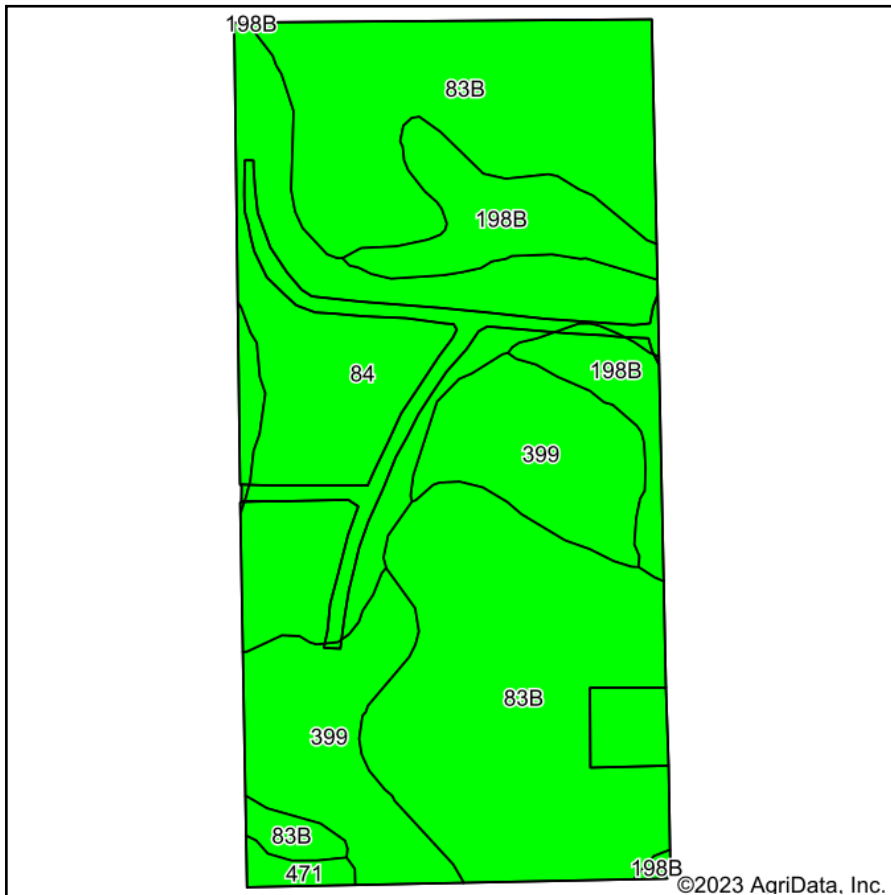
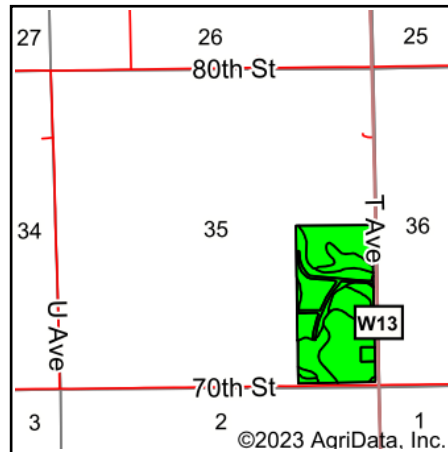


Total Soils Map



Soils data provided by USDA and NRCS.



State: **Iowa**
 County: **Fayette**
 Location: **35-92N-10W**
 Township: **Fremont**
 Acres: **76.76**
 Date: **8/8/2023**



Maps Provided By:



Area Symbol: IA065, Soil Area Version: 27

Code	Soil Description	Acres	Percent of field	CSR2 Legend	Non-Irr Class *c	CSR2**	*n NCCPI Overall	
83B	Kenyon loam, 2 to 5 percent slopes	35.28	46.0%		Ile	90	87	
84	Clyde clay loam, 0 to 3 percent slopes	19.55	25.5%		Ilw	88	90	
399	Readlyn silt loam, 1 to 3 percent slopes	14.06	18.3%		Iw	91	79	
198B	Floyd loam, 1 to 4 percent slopes	7.18	9.4%		Ilw	89	88	
471	Oran loam, 1 to 3 percent slopes	0.69	0.9%		Iw	74	77	
Weighted Average						1.81	89.4	*n 86.3

**IA has updated the CSR values for each county to CSR2.

*n: The aggregation method is "Weighted Average using all components"

*c: Using Capabilities Class Dominant Condition Aggregation Method

Soils data provided by USDA and NRCS.