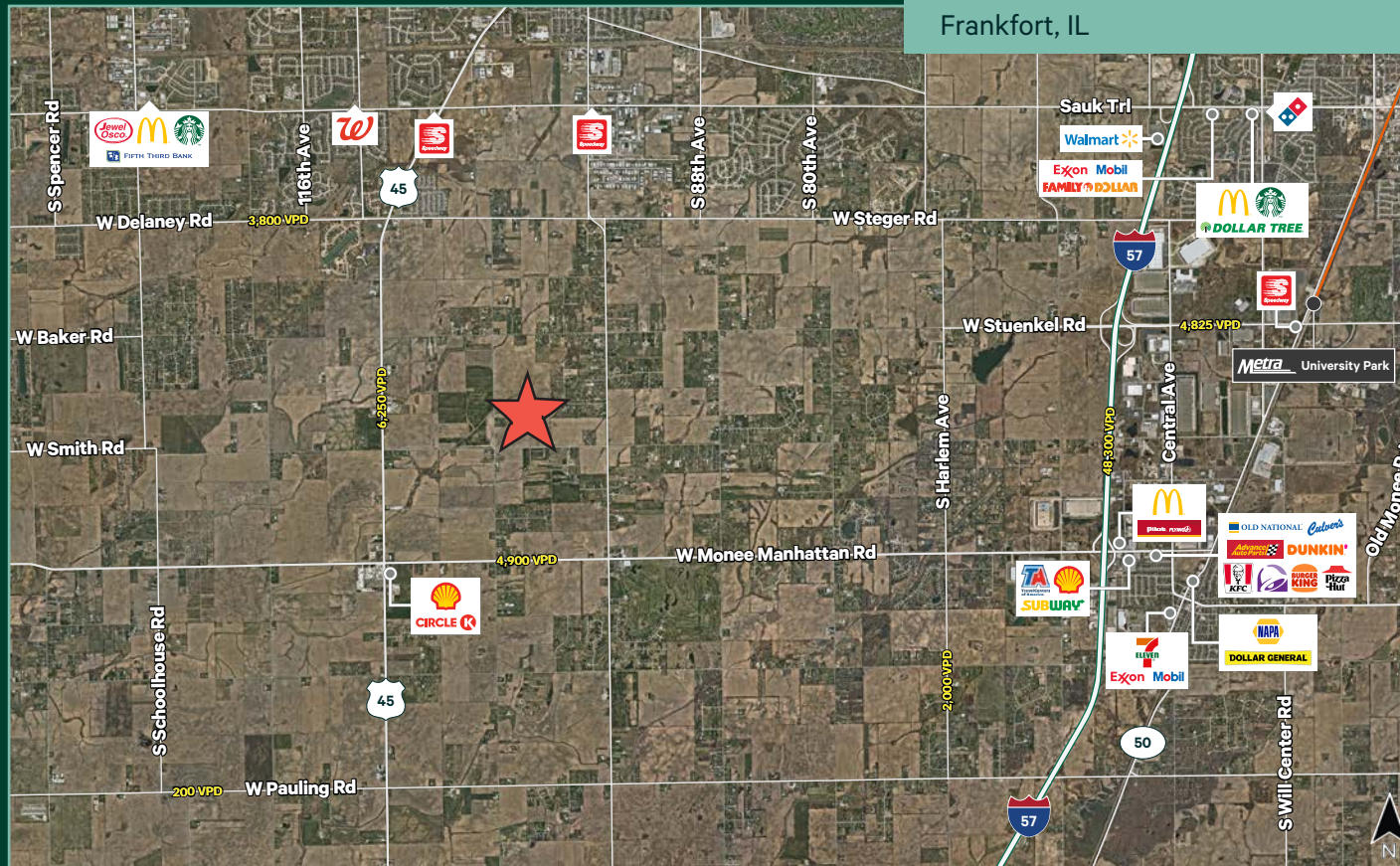


# Prime Investment Opportunity

NEC of Dralle Road & 104th Avenue  
Frankfort, IL



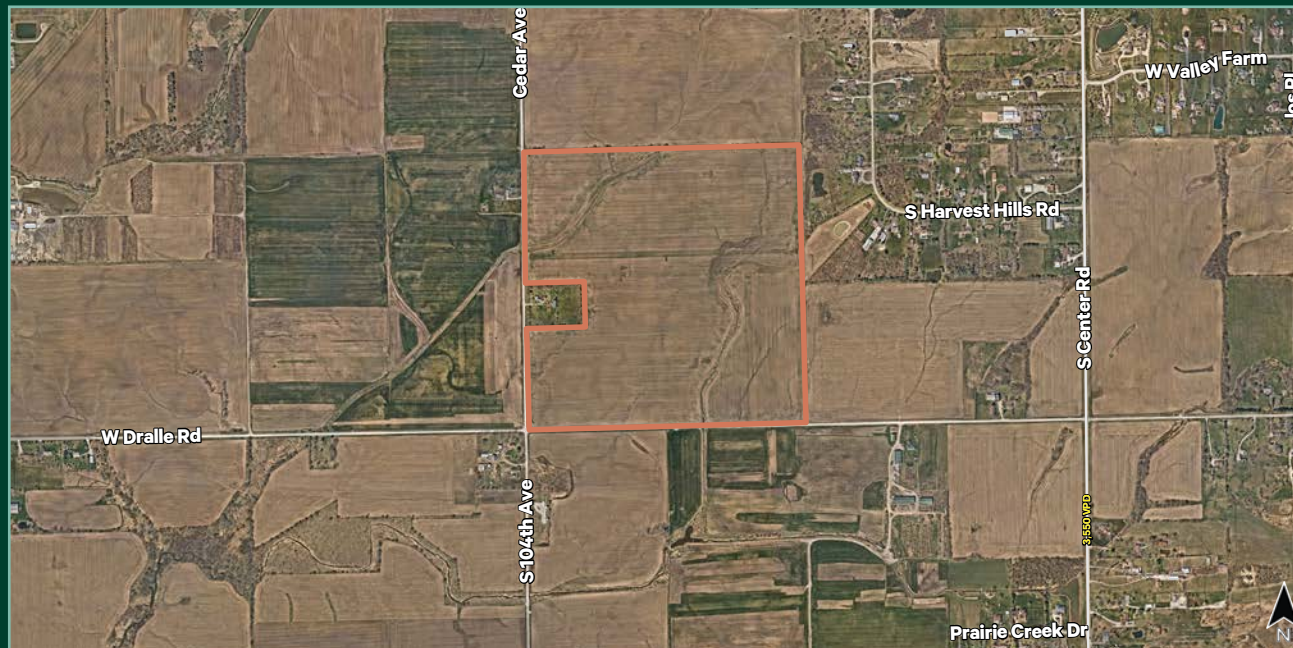
## Property Highlights

NEC of Dralle Road & 104th Avenue  
Frankfort, IL

### For Sale ±155 Acres

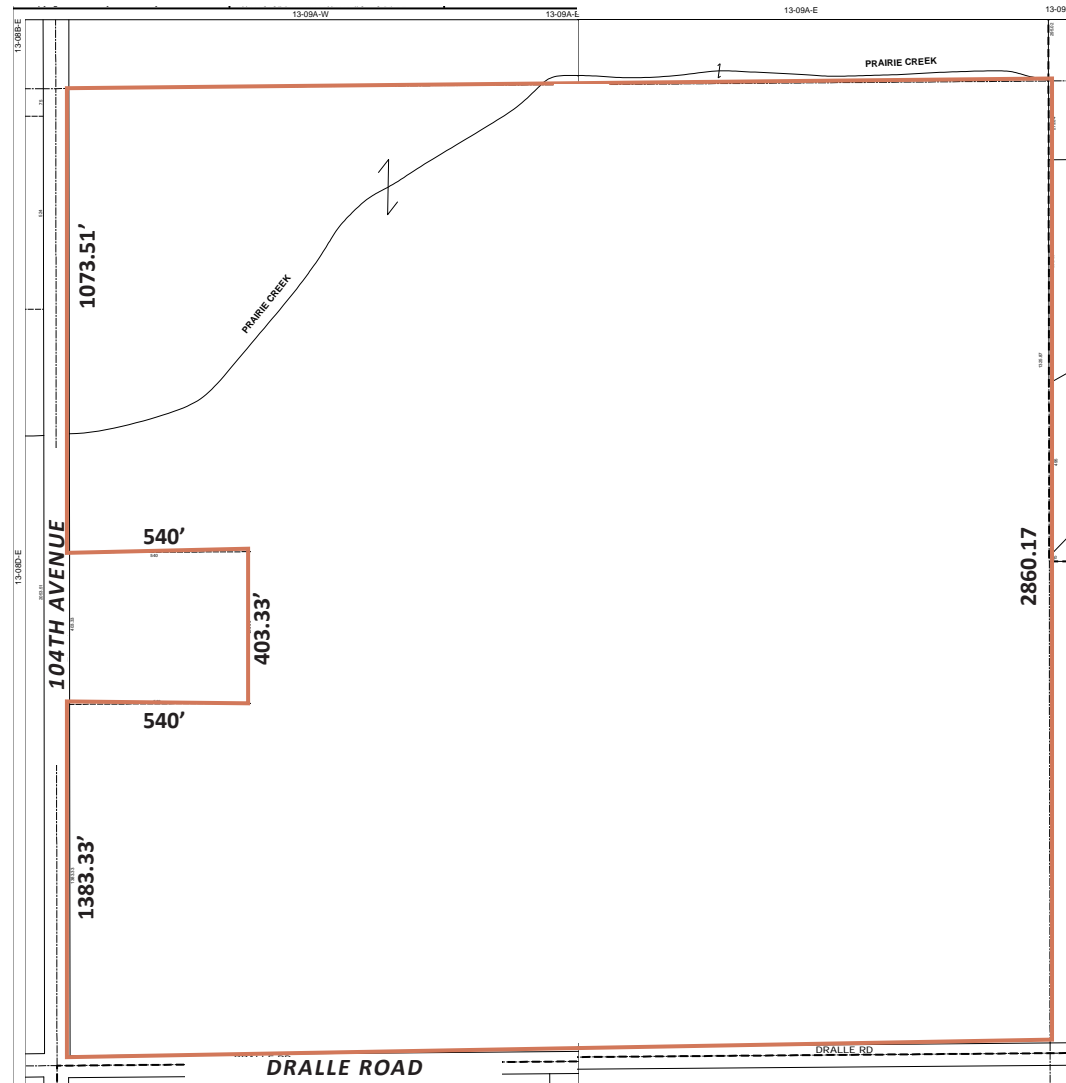
- + Green Garden Township in Will County
- + Directly east of IL Rt 45
- + Easy access to I-57 via Stuenkel or Monee-Manhattan Rd
- + Currently used as farmland
- + Peotone Community School District 207
- + Traffic Counts:  
6,250 vehicles per day on IL Rt 45  
48,300 vehicles per day on I-57
- + PIN Number: 18-13-09-300-02
- + Taxes: \$3,595
- + Please call for additional Information
- + Soil Maps and Farm Lease available upon request

### Site Aerial



±155  
Acres

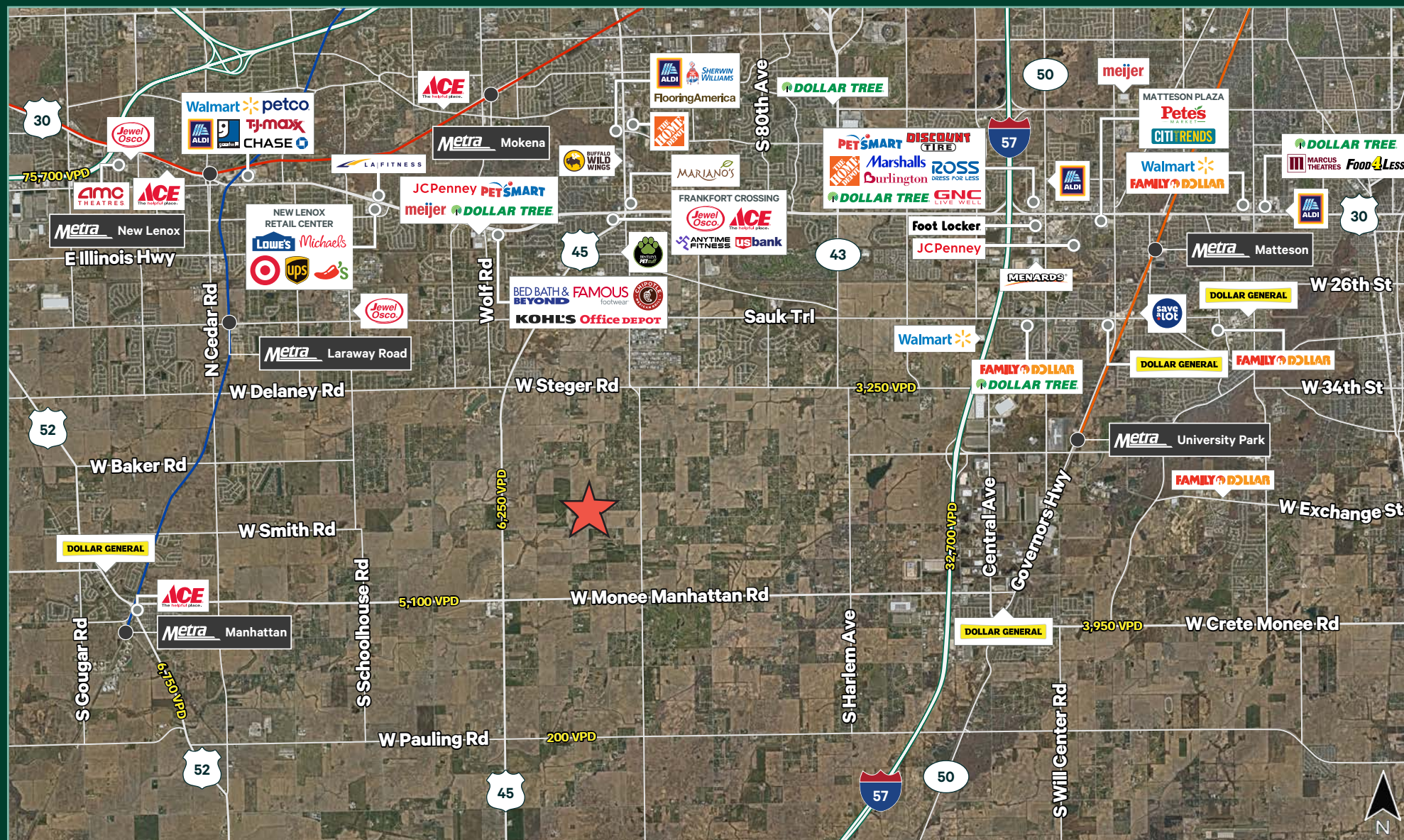
\$15,000/per acre  
Asking Price





## Area Amenities and Transportation Corridors

NEC of Dralle Road & 104th Avenue  
Frankfort, IL



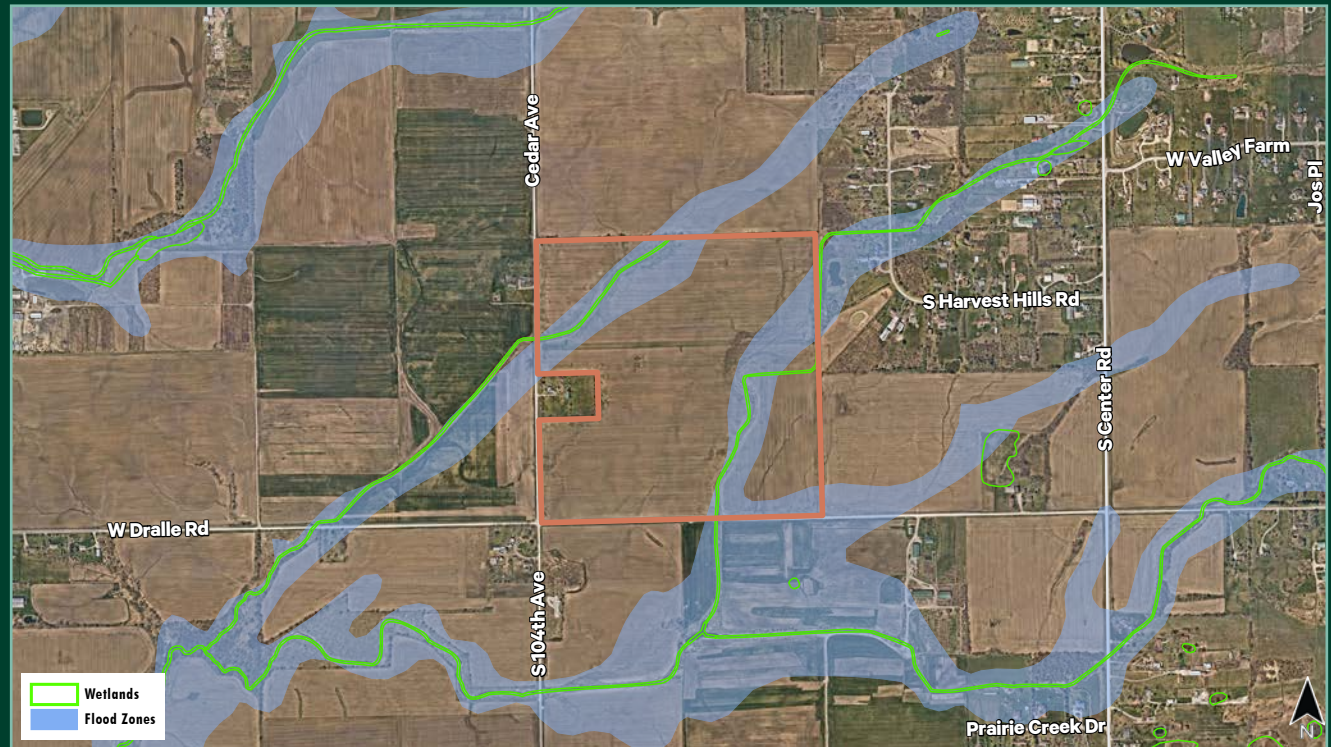


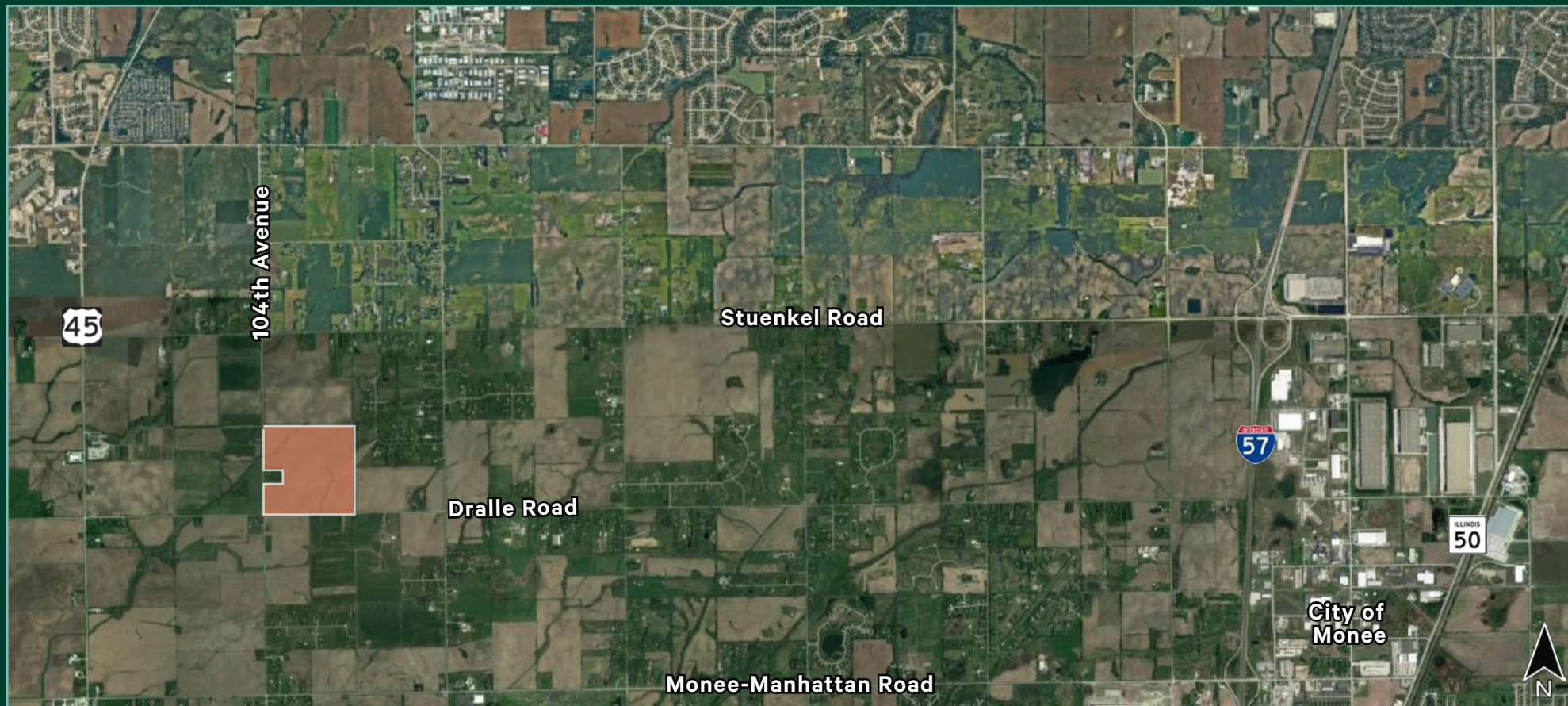
## Demographic Snapshot

NEC of Dralle Road & 104th Avenue  
Frankfort, IL

	1 MILE	3 MILES	5 MILES
<b>Population</b>	302	4,956	30,456
<b>Households</b>	105	1,855	10,252
<b>Average Household Income</b>	\$129,284	\$138,918	\$164,676
<b>Average Housing Value</b>	\$394,363	\$363,531	\$396,732

## Floodplains / Wetlands





## Contact Us

### Tony Gange

Executive Vice President  
+1 630 573 7030  
tony.gange@cbre.com

### Matt Ishikawa

Senior Vice President  
+1 630 573 7068  
matt.ishikawa@cbre.com

### Mike Smith

Senior Associate  
+1 630 573 7804  
mike.r.smith@cbre.com

© 2023 CBRE, Inc. All rights reserved. This information has been obtained from sources believed reliable, but has not been verified for accuracy or completeness. You should conduct a careful, independent investigation of the property and verify all information. Any reliance on this information is solely at your own risk. CBRE and the CBRE logo are service marks of CBRE, Inc. All other marks displayed on this document are the property of their respective owners, and the use of such logos does not imply any affiliation with or endorsement of CBRE. Photos herein are the property of their respective owners. Use of these images without the express written consent of the owner is prohibited.