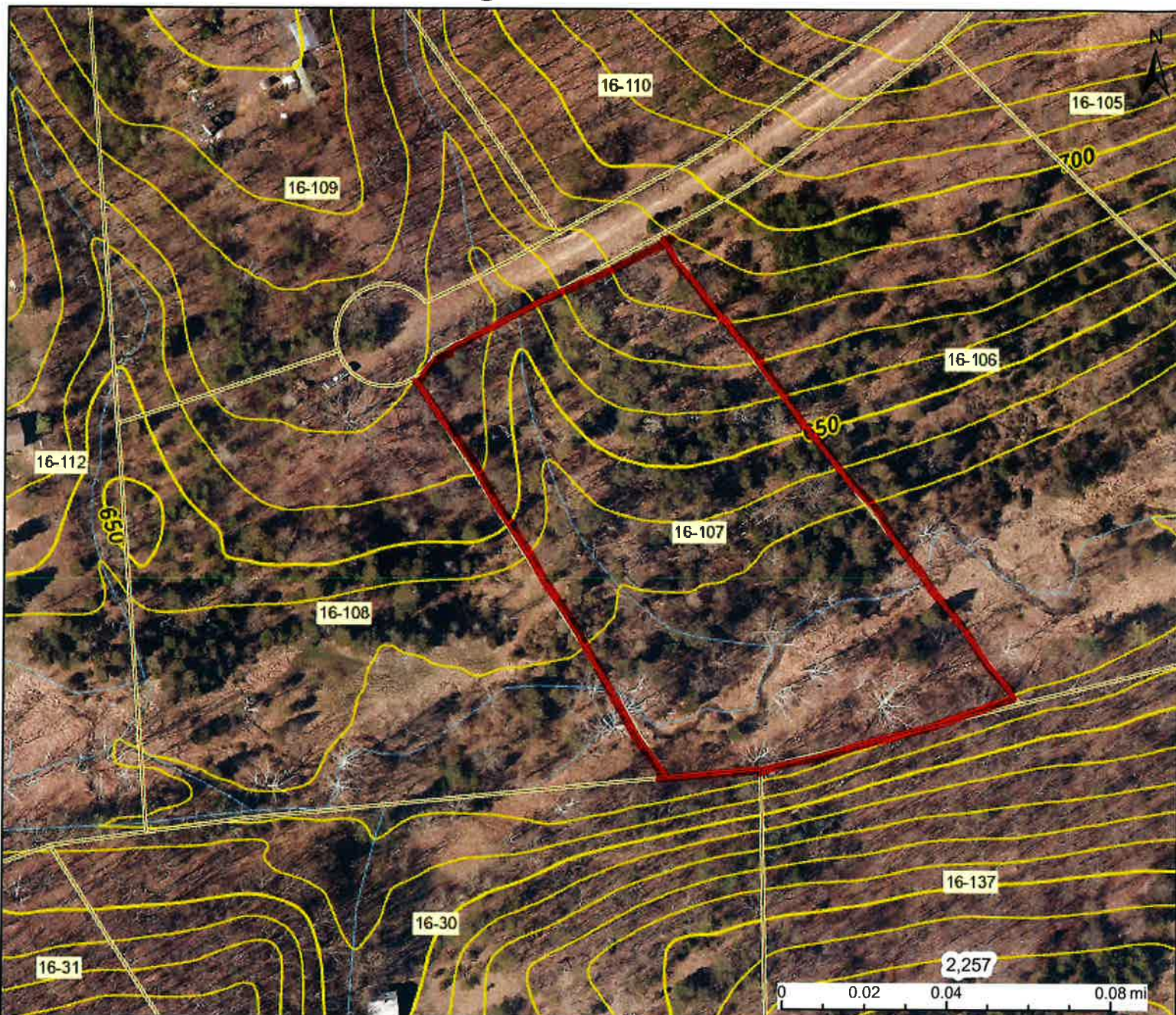



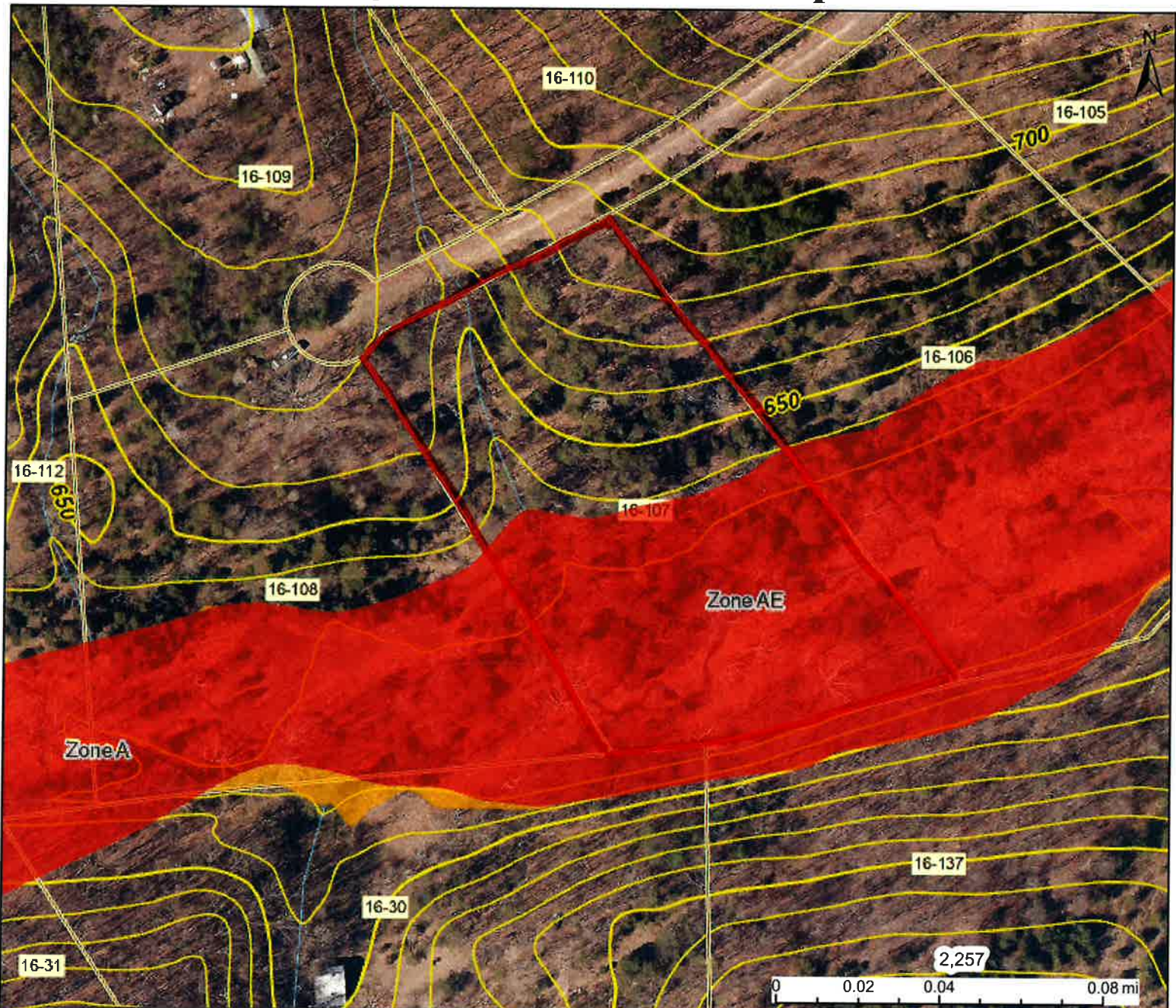
6 long acre estates








This map is not the official regulatory FIRM or DFIRM. Its purpose is to assist with determining potential flood risk for the selected location.

 Flood Info Location Map created on 8/28/2023	
User Notes	
Flood Hazard Area	
Flood Zone	
Stream Watershed (HUC8)	
Flood Height	0.0 ft (Source:) (NAVD88)
Water Depth	
Elevation	
Community & ID	
FEMA Map & Date	
Location (lat, long)	
Parcel ID	
E-911 Address	

6 long acres estates flood map



This map is not the official regulatory FIRM or DFIRM. Its purpose is to assist with determining potential flood risk for the selected location.

<div><div><div>H</div><div>I</div><div>G</div><div>H</div></div><div></div><div>Regulatory Floodway</div></div>		<div><div><div><div></div><div>Flood Info Location</div></div><div>Map created on 8/28/2023</div></div></div>	
<div><div><div>R</div><div>I</div><div>S</div><div>K</div></div><div></div><div>1-Percent-Annual-Chance Flood Hazard Area With Base Flood Elevation (BFE)</div></div>		<div>User Notes</div>	
<div><div><div>R</div><div>I</div><div>S</div><div>K</div></div><div></div><div>1-Percent-Annual-Chance Flood Hazard Area Without BFE (may have Advisory Flood Heights)</div></div>		<div><div><div>Flood Hazard Area</div><div>Flood Zone</div><div>Stream</div><div>Watershed (HUC8)</div></div></div>	
<div><div><div>R</div><div>I</div><div>S</div><div>K</div></div><div></div><div>1-Percent-Annual-Chance Future Conditions (High Risk Advisory Flood Zones)</div></div>		<div><div><div>Flood Height</div><div>Water Depth</div><div>Elevation</div><div>Community & ID</div><div>FEMA Map & Date</div><div>Location (lat, long)</div><div>Parcel ID</div><div>E-911 Address</div></div></div>	
<div><div>Download the Full Legend for all flood tool symbols https://www.mapwv.gov/flood/map/docs/wv_flood_tool_legend.pdf</div></div>		<div>0.0 ft (Source:) (NAVD88)</div>	
<div><div>Disclaimer:</div><div>The online map is for use in administering the National Flood Insurance Program. It does not necessarily identify all areas subject to flooding, particularly from local drainage sources of small size. Refer to the official Flood Insurance Study (FIS) for detailed flood elevation data in flood profiles and data tables. WV Flood Tool (https://www.MapWV.gov/flood) is supported by FEMA, WV NFIP Office, and WV GIS Technical Center.</div></div>			

