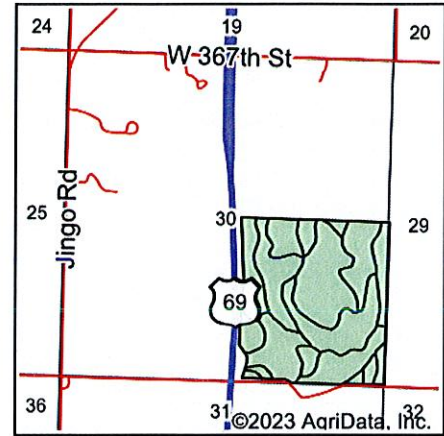
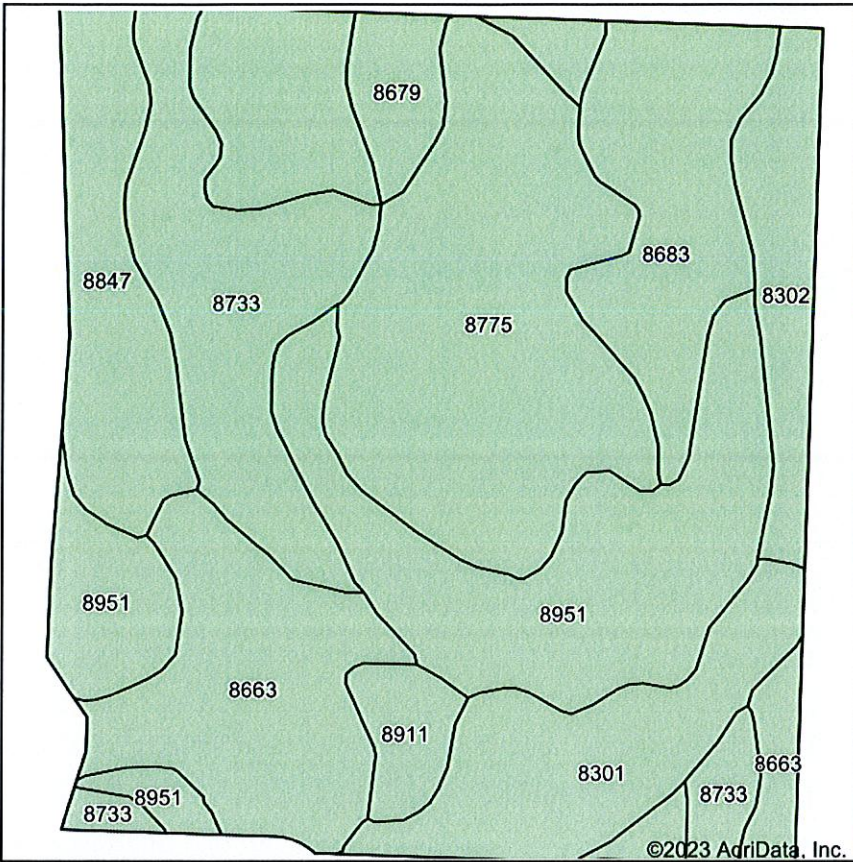


# Soils Map



State: **Kansas**  
 County: **Miami**  
 Location: **30-18S-25E**  
 Township: **Sugar Creek**  
 Acres: **142.16**  
 Date: **8/16/2023**



Soils data provided by USDA and NRCS.

Area Symbol: KS121, Soil Area Version: 23						
Code	Soil Description	Acres	Percent of field	Non-Irr Class *c	Range Production (lbs/acre/yr)	*n NCCPI Soybeans
8775	Kenoma silt loam, 1 to 3 percent slopes	26.17	18.4%	IIIe	3888	59
8951	Wagstaff silty clay loam, 1 to 3 percent slopes	25.40	17.9%	IIIe	4968	43
8847	Okemah silt loam, 0 to 3 percent slopes	17.32	12.2%	Is	5328	62
8733	Eram silty clay loam, 1 to 3 percent slopes	17.17	12.1%	IIIe	4100	39
8663	Clareson-Rock outcrop complex, 3 to 15 percent slopes	16.58	11.7%	VIe	3398	26
8683	Dennis silt loam, 3 to 7 percent slopes	12.59	8.9%	IIIe	5048	65
8301	Verdigris silt loam, 0 to 1 percent slopes, frequently flooded	11.88	8.4%	Vw	8048	52
8302	Verdigris silt loam, 0 to 1 percent slopes, occasionally flooded	6.83	4.8%	IIw	7758	75
8679	Dennis silt loam, 1 to 3 percent slopes	4.42	3.1%	Ile	4838	64
8911	Summit silty clay loam, 1 to 3 percent slopes	2.89	2.0%	Ile	4828	60
8631	Bucyrus silty clay loam, 1 to 3 percent slopes	0.91	0.6%	Ile	6108	60
<b>Weighted Average</b>				<b>3.17</b>	<b>4924</b>	<b>*n 51.1</b>

\*n: The aggregation method is "Weighted Average using all components"

\*c: Using Capabilities Class Dominant Condition Aggregation Method

Soils data provided by USDA and NRCS.