



SILVER CITY RANCH

AGRICOLA MINE RD
FORT MEADE, FL 33841

Daniel Lanier
863.698.2971
daniel.lanier@svn.com

Property Overview



Sale Price

\$2,800,000

OFFERING SUMMARY

Acreage: 417.41 Acres
Price / Acre: \$6,708
City: Fort Meade
County: Polk
Property Type: Land: Land Investment,
Land Other, Ranch,
Waterfront

PROPERTY OVERVIEW

Silver City Ranch is a former phosphate mine located west of Fort Meade and just minutes from Bartow, Lakeland and Mulberry. This property has very diverse terrain including wetlands, sand hills and 58+/- acres of private lakes and ponds. It is easily accessed from both Agricola Road and CR555. With many large adjacent landowners such as Duke Energy and Mosaic, this property is very secluded and full of deer, hogs, dove and many other game animals. The private lakes and ponds are full of fish such as bass, tilapia and more. Silver City Ranch is the perfect recreational tract full of endless possibilities just minutes away from town.

Specifications & Features



SPECIFICATIONS & FEATURES

Land Types:

- Hunting & Recreation Properties
- Land Investment
- Land Other
- Ranch
- Waterfront

Uplands / Wetlands:

361 acres of uplands

Location



LOCATION & DRIVING DIRECTIONS

Parcel:

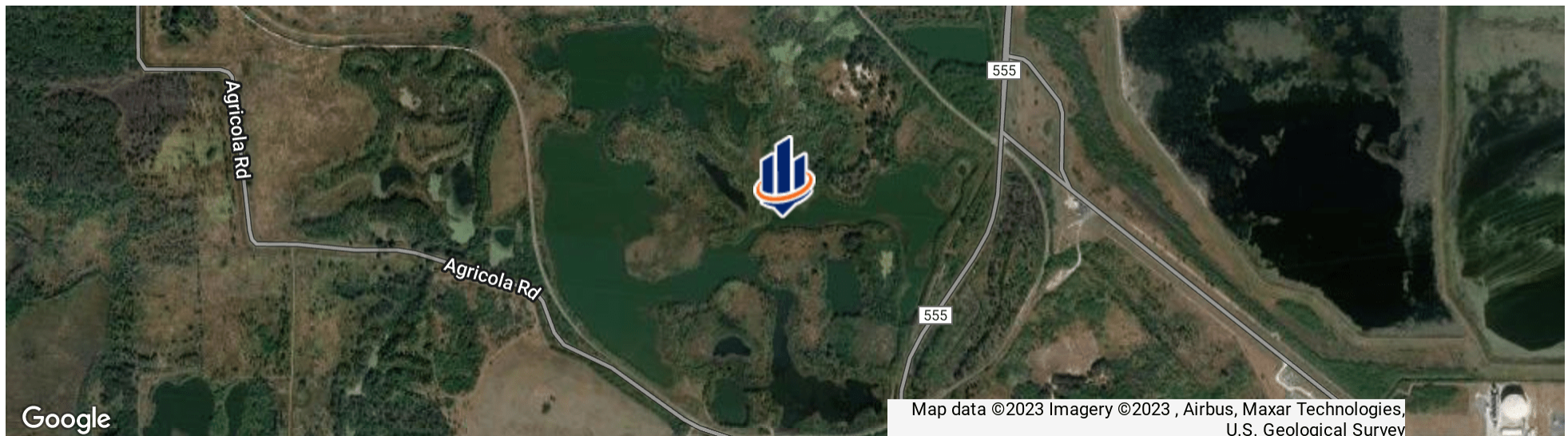
24-31-11-000000-043020
24-31-15-000000-011010
24-31-10-000000-022010
24-31-10-000000-012020
24-31-10-000000-013010
24-31-09-000000-011010

GPS:

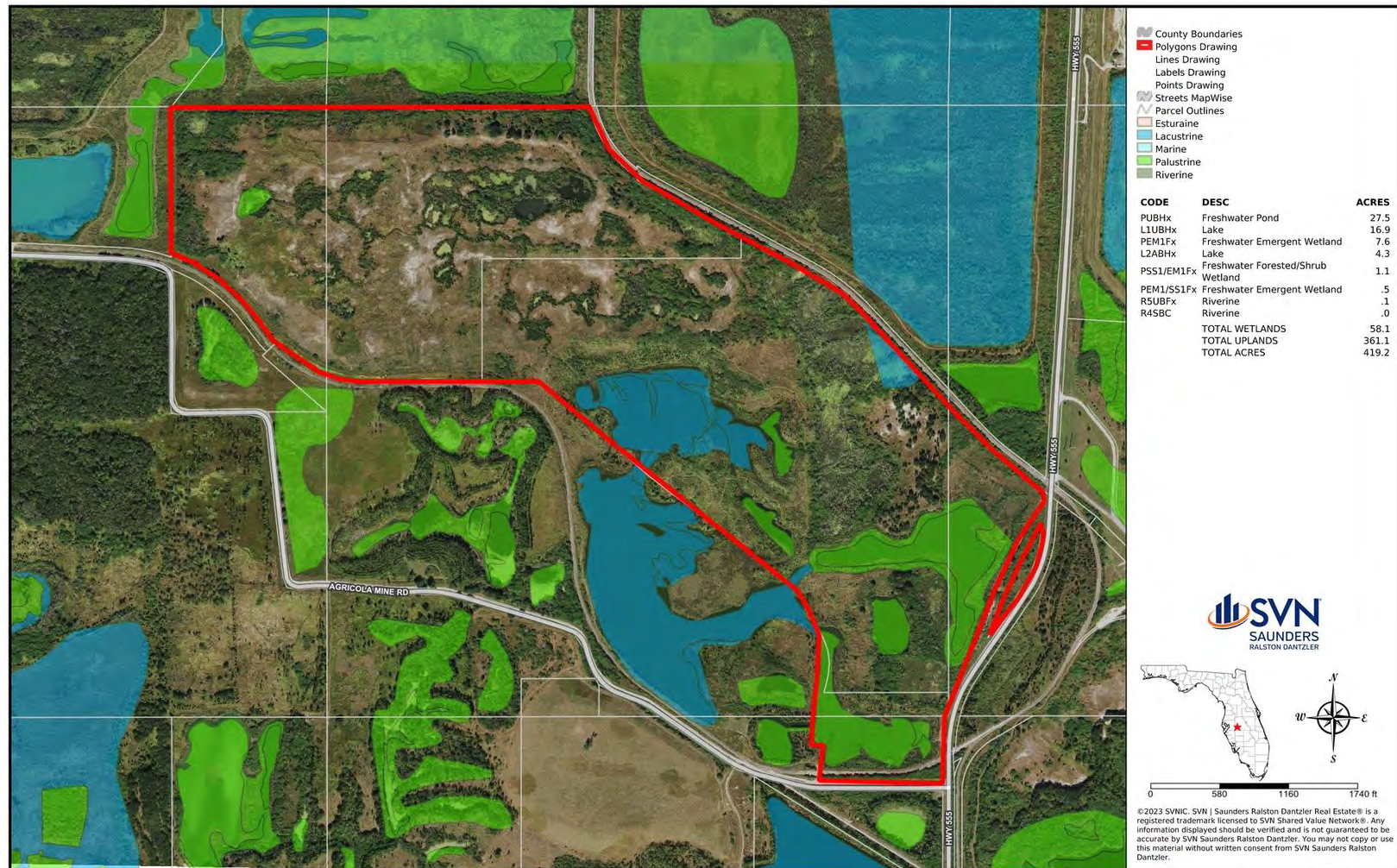
27.7953501, -81.894532

Driving Directions:

- Travel west from Fort Meade 5.5 miles to CR555
- Turn north on CR555 for 2.9 miles and then turn west on Agricola



Wetlands Map



Soils Map



Additional Photos





POLK COUNTY FLORIDA

Founded	1861	Density	386.5 [2019]
County Seat	Bartow	Population	787,404 [2022]
Area	1,875 sq. mi.	Website	polk-county.net

In Florida, Polk County is a leading contributor to the state's economy and politics. Concerning the local economy, industries like citrus, cattle, agriculture, and phosphate have all played extremely vital roles in Polk County. An increase in tourist revenue has also significantly contributed to the county's economic growth in recent years. As the heart of Central Florida, Polk County's location between the Tampa and Orlando Metropolitan Areas has aided in the development and growth of the area. Residents and visitors alike are drawn to the unique character of the county's numerous heritage sites, cultural venues, stunning natural landscapes, and plentiful outdoor activities.

**DANIEL LANIER****Senior Advisor**

daniel.lanier@svn.com

Direct: 877.518.5263 x377 | Cell: 863.698.2971

PROFESSIONAL BACKGROUND

Daniel Lanier is a Senior Advisor at SVN | Saunders Ralston Dantzler Real Estate in Lakeland, Florida. Daniel was a founder and managing partner of a citrus nursery for six years. He has knowledge and experience in commercial beef cattle, citrus, nursery, and row crop farming. Beginning his career in crop insurance in 2011, Daniel is a crop insurance agent and serves growers and producers all over the southeast. Daniel is a graduate of Fort Meade High School and South Florida State College. He and his wife, Randi, have two kids.

Daniel specializes in:

- Agricultural Land
- Farmland
- Beef Cattle Ranchland
- Citrus Farmland
- Nurseries

SVN | Saunders Ralston Dantzler
1723 Bartow Rd
Lakeland, FL 33801

One of America's **BEST BROKERAGES**



One of America's
Best Brokerages



**APEX Top
National Producer**
Dean Saunders,
ALC, CCIM



**Most Influential
Business Leaders**
Dean Saunders,
ALC, CCIM



**Largest Commercial
Real Estate Brokers
in Tampa Bay**



**Ranked 210 on Inc.
5000 Regional List**



For more information visit SVNsaunders.com

HEADQUARTERS

1723 Bartow Road
Lakeland, Florida 33801
863.648.1528

ORLANDO

605 E Robinson Street, Suite 410
Orlando, Florida 32801
407.516.4300

NORTH FLORIDA

356 NW Lake City Avenue
Lake City, Florida 32055
352.364.0070

GEORGIA

218 W Jackson Street, Suite 203
Thomasville, Georgia 31792
229.299.8600

©2023 SVN | Saunders Ralston Dantzler Real Estate. All SVN® Offices Independently Owned and Operated SVN | Saunders Ralston Dantzler Real Estate is a full-service land and commercial real estate brokerage with over \$4 billion in transactions representing buyers, sellers, investors, institutions, and landowners since 1996. We are recognized nationally as an authority on all types of land, including agriculture, ranch, recreation, residential development, and international properties. Our commercial real estate services include property management, leasing and tenant representation, valuation, business brokerage, and advisory and counseling services for office, retail, industrial, and multifamily properties. Our firm also features an auction company, forestry division, international partnerships, hunting lease management, and extensive expertise in conservation easements. Located in Florida and Georgia, we provide proven leadership and collaborative expertise backed by the strength of the SVN® global platform.

