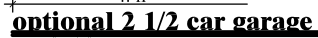


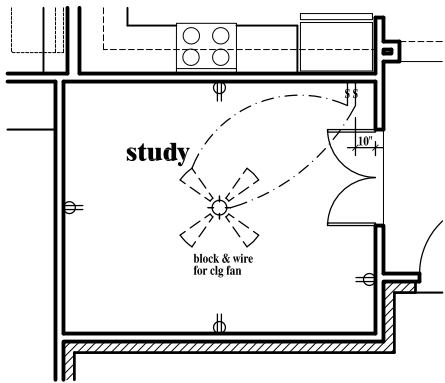
square footages	
"a" elevation	
first floor	1840 s.f.
second floor	n/a s.f.
total living (a/c)	1840 s.f.
garage and/or storage	416 s.f.
covered porch	179 s.f.
optional covered patio	134 s.f.
total under roof	2569 s.f.
optional three car garage	+216 s.f.
optional 1 1/2 car garage	+109 s.f.
overall width	39'-11"
overall width w/ optional three car garage	49'-11"
overall width w/ optional 2 1/2 car garage	44'-11"
overall depth	65'-0"
"b" elevation	
first floor	1840 s.f.
second floor	n/a s.f.
total living (a/c)	1840 s.f.
garage and/or storage	416 s.f.
covered porch	183 s.f.
optional covered patio	134 s.f.
total under roof	2573 s.f.
optional three car garage	+216 s.f.
optional 1 1/2 car garage	+109 s.f.
overall width	39'-11"
overall width w/ optional three car garage	49'-11"
overall width w/ optional 2 1/2 car garage	44'-11"
overall depth	65'-0"
"c" elevation	
first floor	1840 s.f.
second floor	n/a s.f.
total living (a/c)	1840 s.f.
garage and/or storage	416 s.f.
covered porch	193 s.f.
optional covered patio	134 s.f.
total under roof	2583 s.f.
optional three car garage	+216 s.f.
optional 1 1/2 car garage	+109 s.f.
overall width	39'-11"
overall width w/ optional three car garage	49'-11"
overall width w/ optional 2 1/2 car garage	44'-11"
overall depth	65'-0"



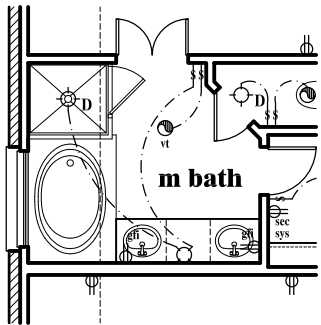
note:
refer to partial floor plan on elevation
for sizes & locations of doors & windows
plate heights, lighting fixture location
and porches, per each elevation

gas/electric per
community standards

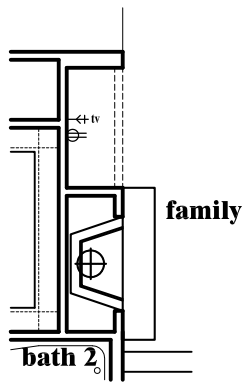
the dogwood



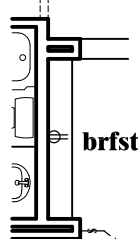
optional study @ dining
scale 1/8" = 1'-0"



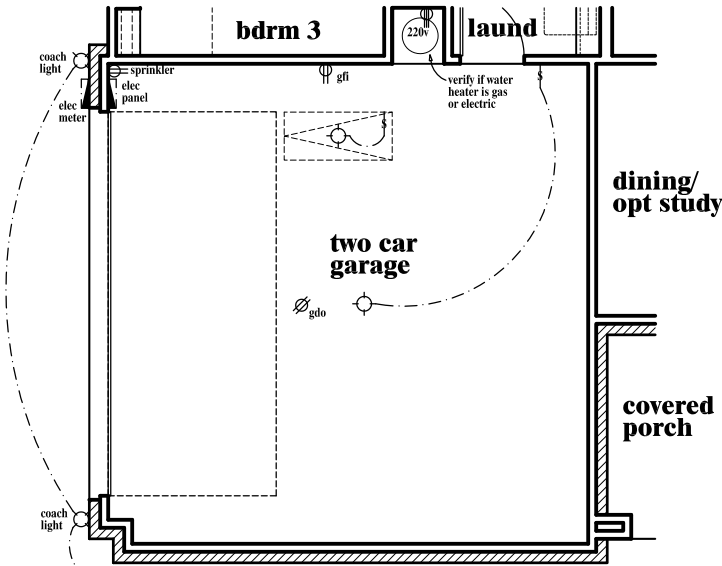
optional deluxe m bath
scale 1/8" = 1'-0"



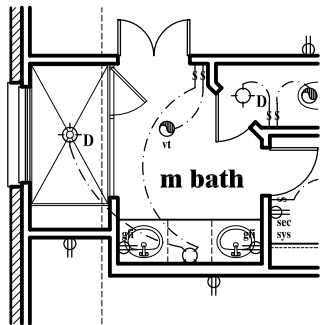
opt fireplace @ family
scale 1/8" = 1'-0"



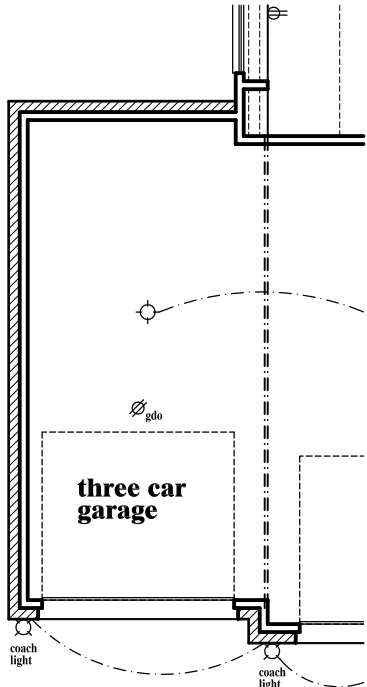
optional cabinets @ brfst
scale 1/8" = 1'-0"



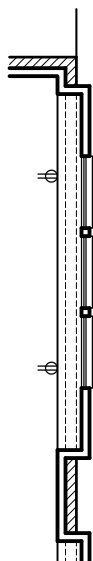
optional side loaded garage
scale 1/8" = 1'-0"



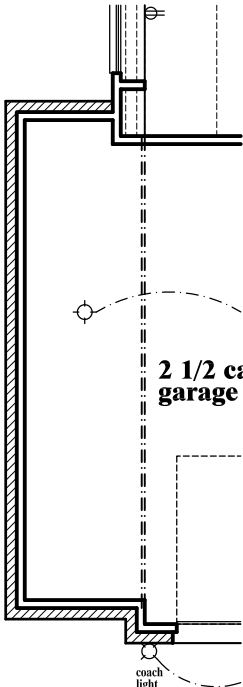
optional enlarged shwr @ m bath
scale 1/8" = 1'-0"



optional three car garage
scale 1/8" = 1'-0"



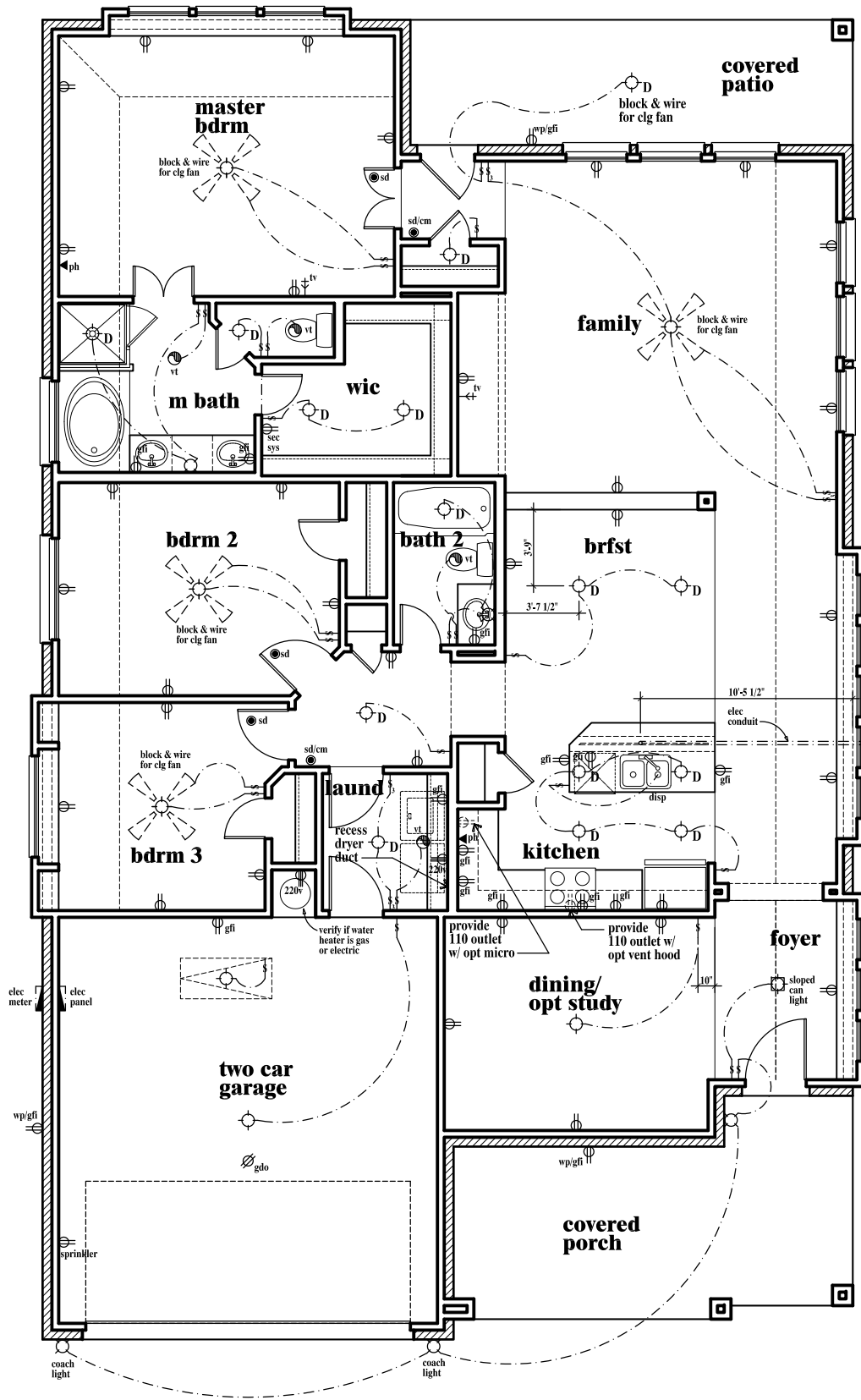
optional window seat @ family
scale 1/8" = 1'-0"



optional 2 1/2 car garage
scale 1/8" = 1'-0"

electrical legend

- switch
- 3-way switch
- ceiling mounted light
- disc LED light
- wall mounted light
- mini recessed light
- recessed light
- recessed light w/eyeball
- ceiling fan w/light
- dbl flood
- 120v electrical receptacle
- waterproof receptacle
- ground fault interrupt
- 220v electrical receptacle
- garage door opener outlet
- exhaust fan
- phone jack
- cable outlet
- smoke detector
- carbon monoxide detector
- electrical wiring
- electrical meter/ panel



electrical plan
scale 1/8" = 1'-0"

the dogwood

Red Line Rev. 9/20/19
Red Line Rev. 5/9/19
Wdw Rev. 9/20/18
Opt Kit Elect 2/27/14
Opt Buffet Rev 2/13/13
Misc Rev 12/27/12
2-1/2 Gar 9/28/12
Misc Rev 12/30/10

revisions	date
Meeting Rev 12/26/07	
Meeting Rev 9/08/08	
Electrical Rev 2/26/09	
Side Loaded Rev 9/8/10	
Misc Rev 10/28/10	

issue date
3/20/06
drawn by
SJW

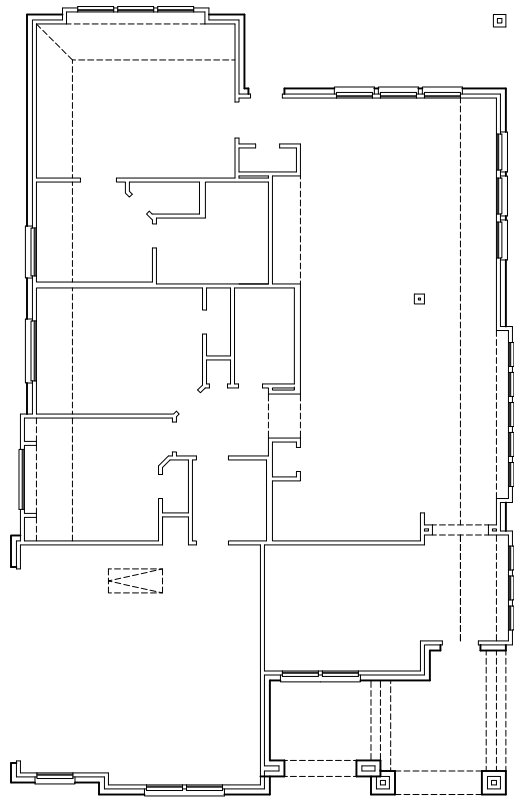
Broyles Development LLC
903-780-2556

The Harder Organization
residential design
planning
and
land

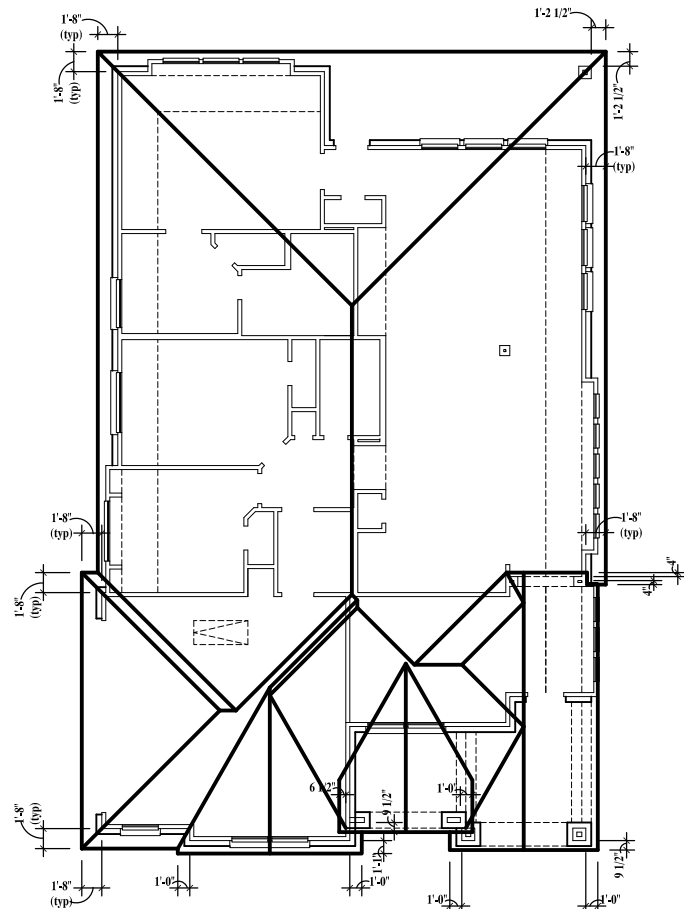
dallas tx • washington dc • greensboro nc
2639 Elm Street, Suite Number 305 Dallas, Texas 75226 voice (214) 744-0404 toll free (877)-207-7660 fax (214) 744-0407

cad ref
1845a1
plan number
"A"

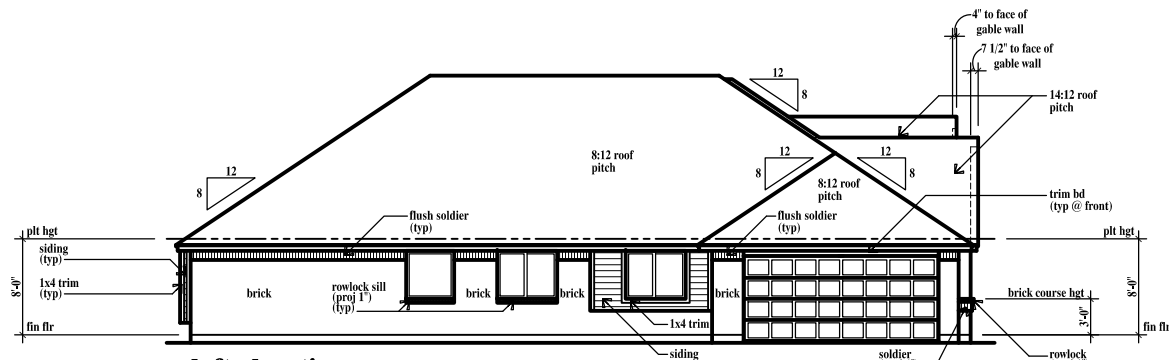
sheet number
A.2



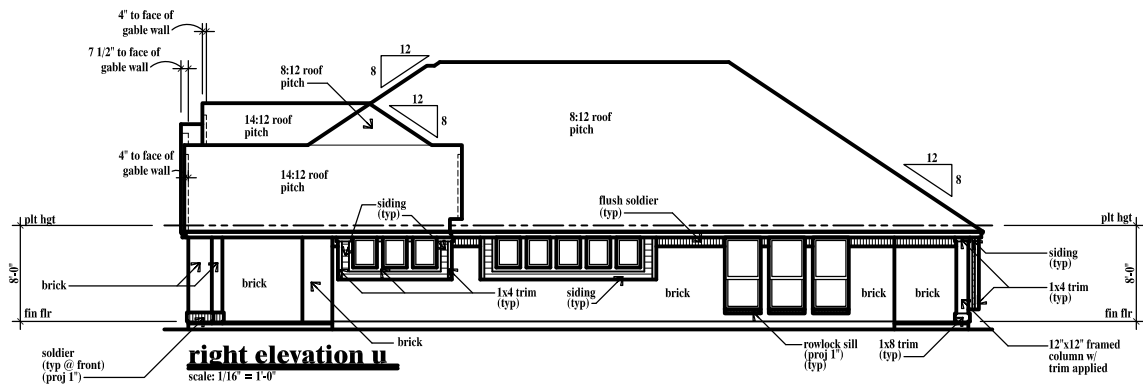
ceiling framing plan u
scale: 1/16" = 1'-0"



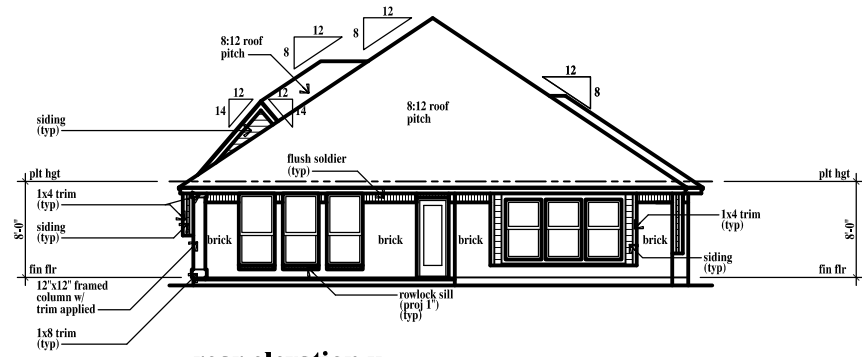
roof framing plan u
scale: 1/16" = 1'-0"



left elevation u
scale: 1/16" = 1'-0"



right elevation u
scale: 1/16" = 1'-0"



rear elevation u
scale: 1/16" = 1'-0"

revisions	date
Wdw Rev 9/20/16	
Red Line Rev 5/9/19	
Red Line Rev 10/4/19	

issue date
10/25/12
drawn by
jme

Broyles Development LLC
903-780-2556

The Harder Organization
residential design
2639 Elm Street, Suite Number 303 Dallas, Texas 75226 voice (214) 744-0404 toll free (877)-207-7650 fax (214) 744-0407

cad ref

1845a3

plan number
"A"

sheet number

A.22.B

the dogwood