

Stewart Lancaster Farm

55± acres | \$1,925,500 | Lancaster, Texas | Dallas County



Chas. S. Middleton

— AND SON LLC —

FARM - RANCH SALES AND APPRAISALS

Est. 1920

Stewart Lancaster Farm

The Stewart Lancaster Farm is a 55-acre property, very centrally located south of downtown Dallas. The property is a very level piece of land that is currently being farmed but is ready for development.

Location

The farm is located a short drive, about 10 minutes, south of Dallas. Being in the southern portion of Lancaster, Texas with quick access to I-35E. This property is ready for a housing development or larger acreage residential sites. The farm is just north of Bear Creek Road on South Houston School Road with approximately 1,000 feet of frontage.

Property Description

The Stewart Lancaster Farm is a very level, well-manicured operating dry-land farm. The fences are in average condition, and most are tree-lined with large hardwood trees. The property has great access off South Houston School Road with city services nearby.

Remarks

If you are looking for an income-producing property or a location with great development possibilities, you need to give this place some consideration.

Price: \$1,925,000

Call Layne Walker today at (214) 244.6484 for more information or to schedule a tour.





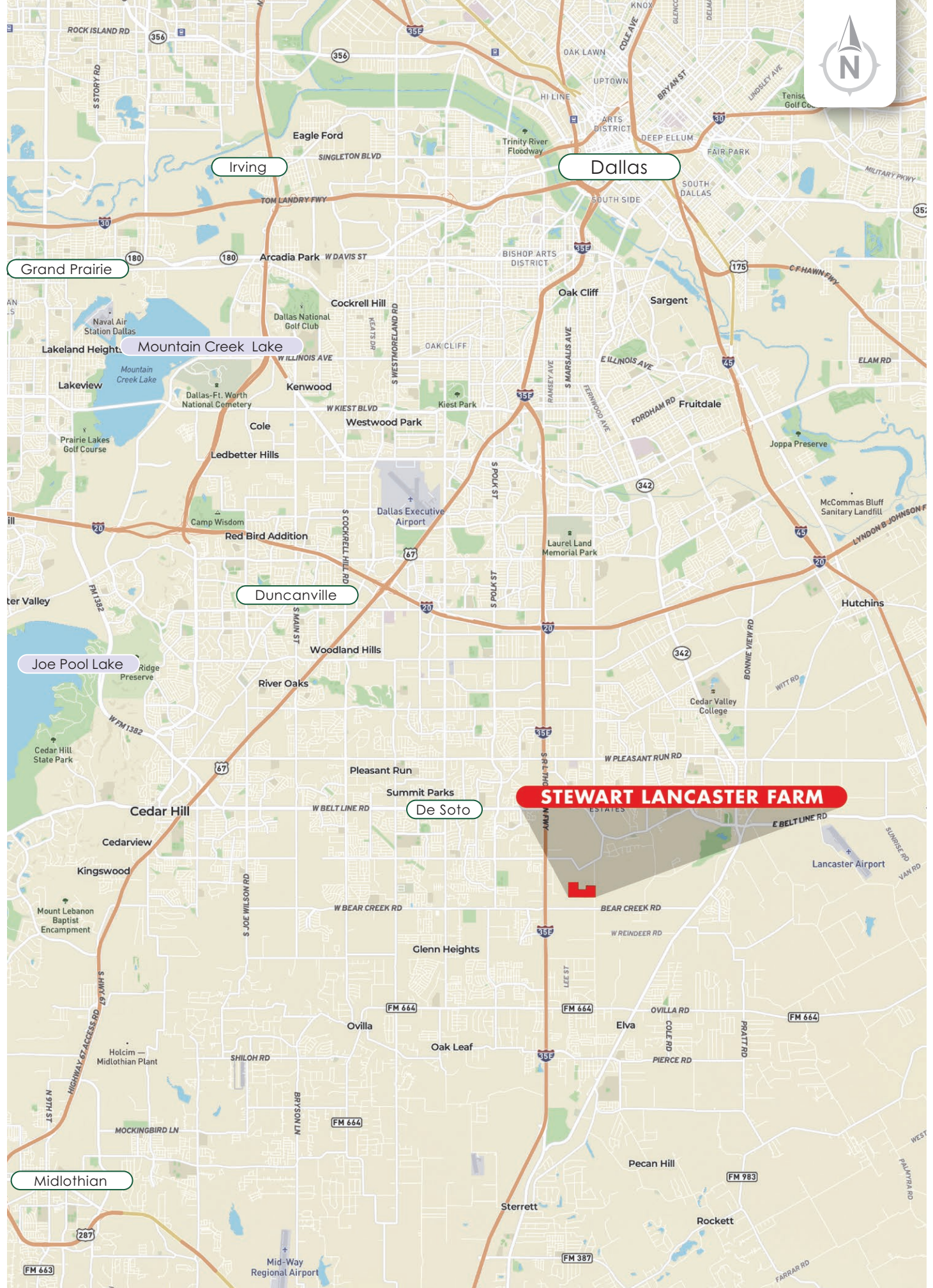








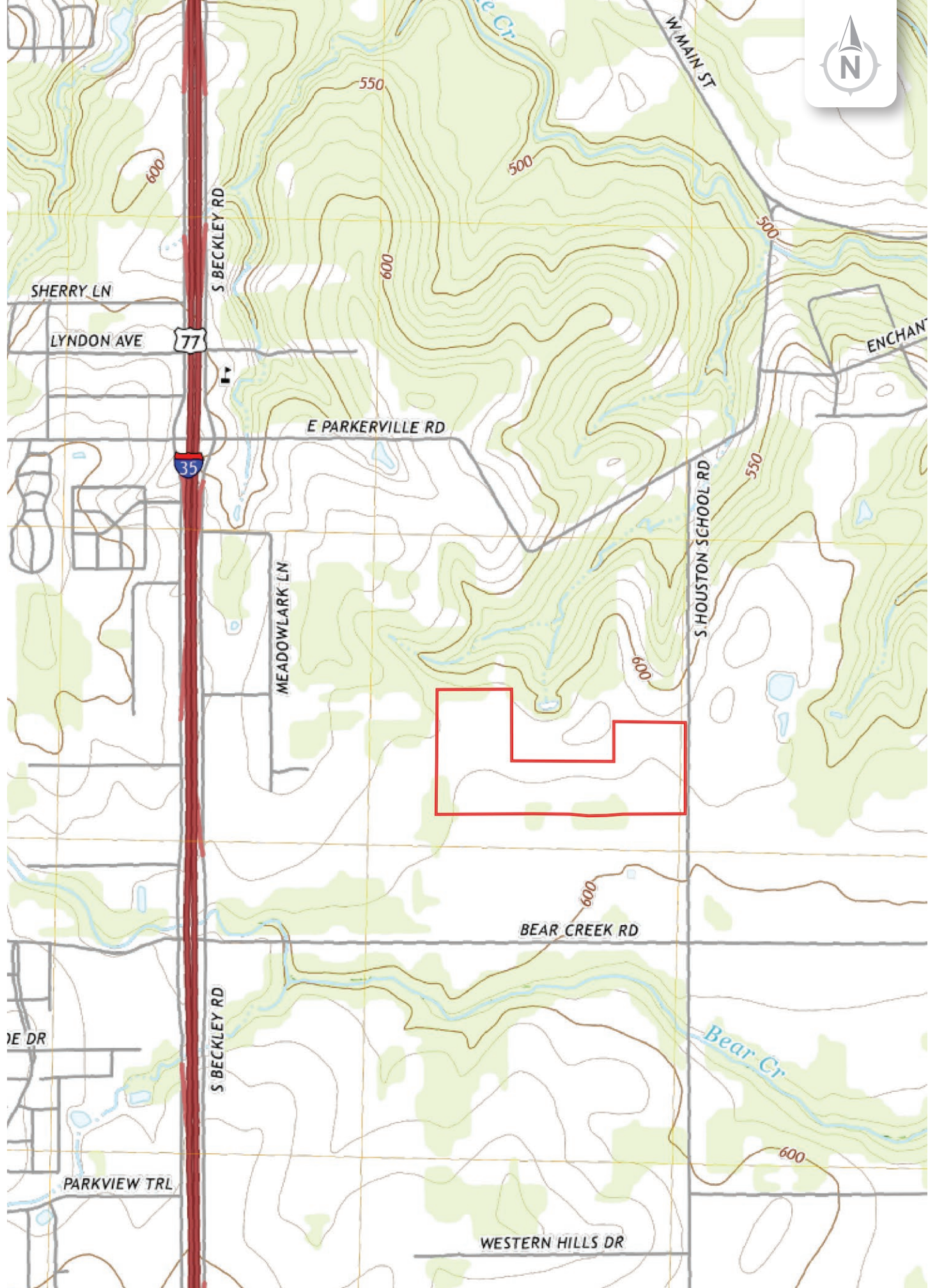




STEWART LANCASTER FARM



32.5652, -96.8100



Chas. S. Middleton

— AND SON LLC —

FARM - RANCH SALES AND APPRAISALS

Est. 1920

Layne Walker

Real Estate Broker • TX

(214) 244.6484

layne@csmansion.com



Scan QR Code for more details on the Stewart Lancaster Farm.

(806) 763.5331

chasmiddleton.com



YouTube

