

12.3ac Ag Land

2 Platted 6.17ac Lots Selling Together

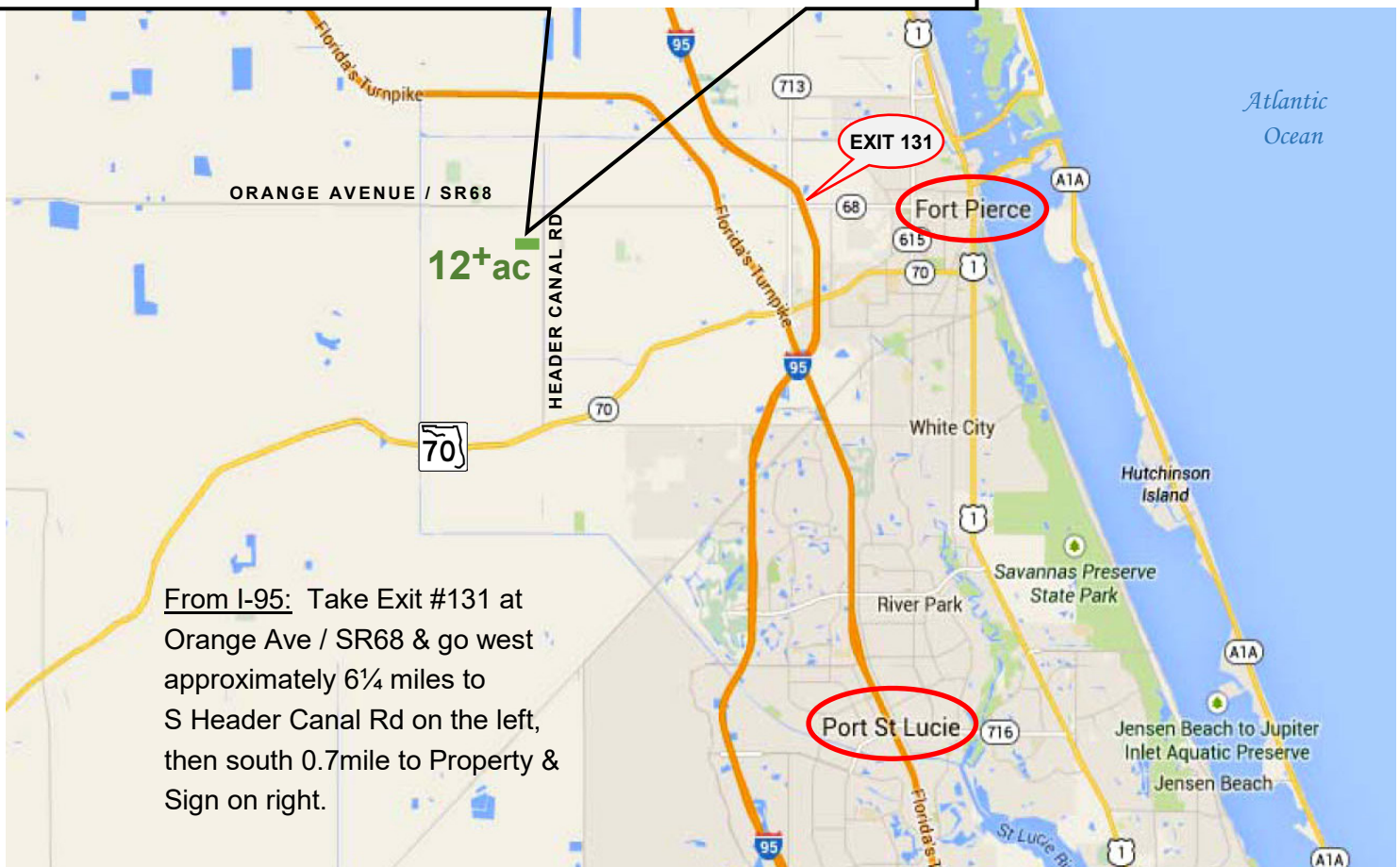
South Header Canal Rd, Saint Lucie County, FL 34945



- AG-5 Agricultural Zoning
- Ag Exempt Taxes
- Laser Levelled & Fenced
- Irrigation & Water Control
- Currently a Bamboo Farm

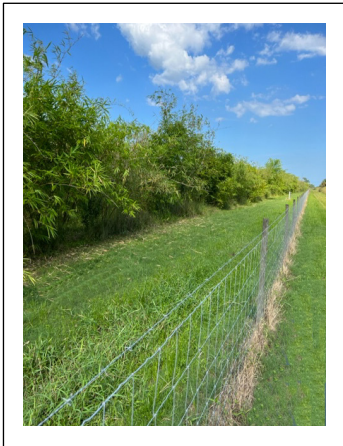
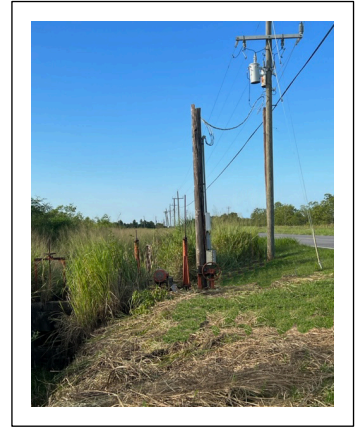
**NO Property Owners'
Association or Fees**

\$600,000.



**mark walters
& company**
real estate brokers & auctioneers

www.waltersco.com • email: mark@waltersco.com
531 South US Hwy 1, Suite B • Fort Pierce, FL 34950
Office (772) 468-8306 • Cell (772) 201-5650



- Micro-jet Irrigation System with 4" PVC Underground Main Lines
- Sub-Surface Drainage: 4" Plastic Perforated Drain Lines; Outfall to Header Canal
- Artesian Well with 125 Amp Service to 5hp Irrigation Pump
- Gated Entrance, Fully Field Fenced Perimeter
- 30' Ingress/Egress Easement to Pineapple Lane at Southwest Corner



The information in this brochure, while believed to be accurate, is subject to verification by prospective purchasers and no liability for errors or omissions is assumed by Mark Walters & Company, its Broker or any of its Agents.